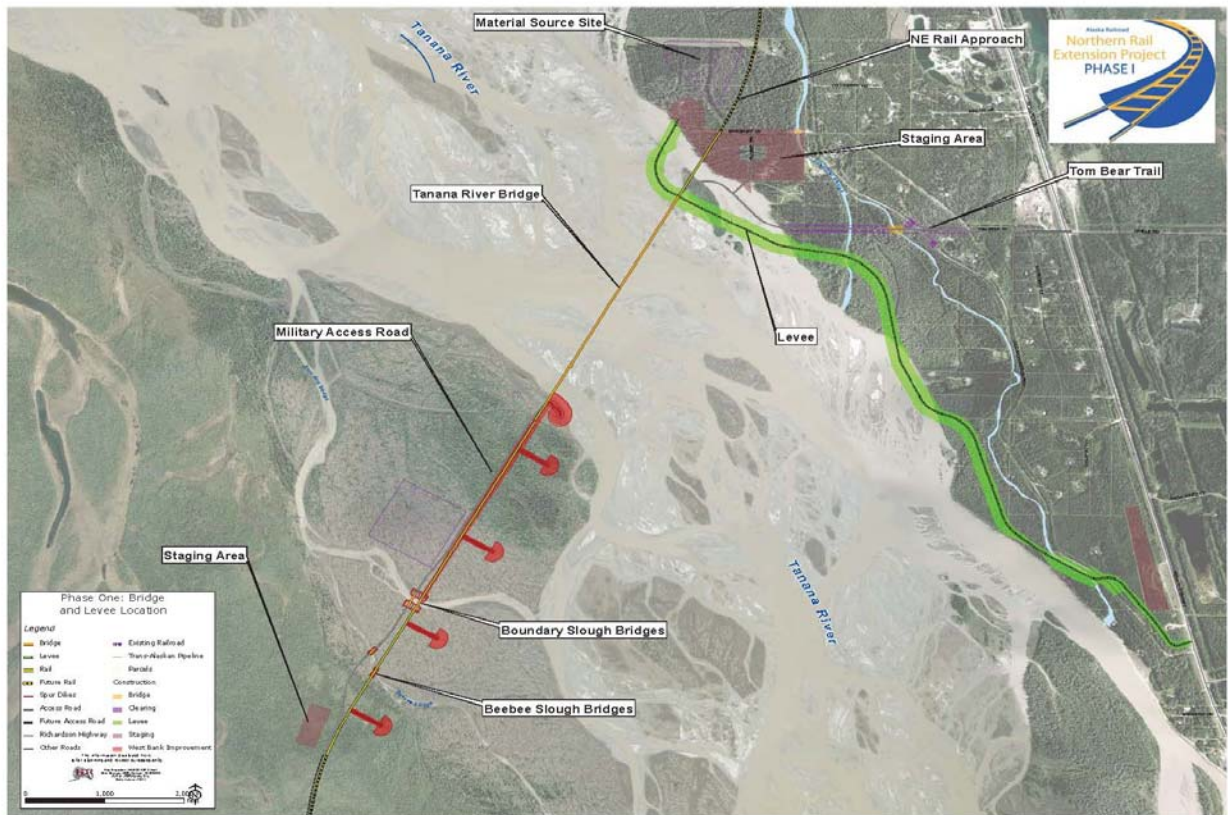




# Northern Rail Extension Phase 1

## Tanana River Bridge Quarterly Progress Report October 15, 2011



**This report covers the period:  
July 1, 2011 through Sept 30, 2011**

[www.northernrailextension.com](http://www.northernrailextension.com)

# Northern Rail Extension Phase 1

## Project Summary

The Northern Rail Extension (NRE) project proposes to construct and operate an approximately 80-mile-long rail extension from Fairbanks to Delta Junction. The NRE project will begin at the existing rail line located on the Eielson Branch line at the Chena Overflow Bridge just south of the community of North Pole and be extended to the community of Delta Junction, with the ability to service Fort Greely.

The project phases are as listed:

- **Phase 1: Bridge, approach road, and levee associated with the crossing of the Tanana River near Salcha. (Current Phase)**
- Phase 2: Approximately 13 miles of rail from Fairbanks to the Tanana River crossing.
- Phase 3: Approximately 30 miles of rail from the west side of the Tanana River crossing to the Tanana Flats Training Area,
- Phase 4: Approximately 38 miles of rail between the Tanana Flats Training Area and Delta Junction.

## Current Status

Third Quarter 2011 saw the completion of pre-construction activities on the NRE Phase 1 project. Final engineering and permitting was completed, construction contract was negotiated and signed with Kiewit Infrastructure West in July.

Third Quarter activities include:

- Construction Activities began
- Utility re-location have begun
- Kiewit is mobilizing equipment and materials to the site.
- Site survey control work is on-going.
- Two 40' temporary bridges were installed at Piledriver Slough bridge and Tom Bear Trail to provide construction access
- Site clearing has commenced
- Borrow and disposal site being established
- Site office and lay down area under construction
- Rip rap haul from Brice quarry on Badger Road has begun
- Levee construction began

# Northern Rail Extension Phase 1

## Next Quarter Outlook

Fourth Quarter activities will include:

- Levee Construction will continue (emphasis will be to complete levee at Pile Driver Slough before freeze up)
- Rip Rap Haul from Brice Quarry (Badger Rd. to Salcha)
- Utilities install/upgrade (power, communications)
- On site borrow development
- Establish site offices and communications
- Winter shutdown preparations



# Northern Rail Extension Phase 1

## Safety

0 Incidents this Quarter

71 Days injury Free

0 Total incidents to date

## Alaska Work Force (this quarter)

82 Total Manpower on Site

65 Alaskan Manpower on Site

79% Alaskans employed on-site this Quarter

## Alaskan Companies providing services:

### Construction

- **Brice Construction:** Rip Rap North Pole
- **MAAPA:** QC and Testing Fairbanks
- **Design Alaska:** Survey Fairbanks
- **Rolling Stone Construction:** Gravel Salcha
- **R & L gravel trucking:** Trucking Fairbanks
- **Powerline Inc.:** Electrical Fairbanks
- **Power House Inc.:** Traffic control Fairbanks
- **Colthrop Draglines Inc.:** Dragline Fairbanks
- **Denali Fence Works:** Fencing Fairbanks
- **Statewide Clearing Inc,** Clearing Eagle River
- **Bloom Enterprises:** Asphalt Paving Fairbanks

### Engineering

- **HDR Alaska:** , Contract Management/Engineering Anchorage
- **Hanson Alaska:** , Bridge Engineering Anchorage
- **Shannon and Wilson:** , Geotechnical Engineering Fairbanks
- **PDC Inc.:** Survey Fairbanks

# Northern Rail Extension Phase 1

## Public Outreach

- A meeting was held with local landowners on August 28.
- A public meeting was held on August 29 in Salcha
- The ground-breaking ceremony was held on September 28 in Salcha.
- Presentation to North Pole Rotary
- Presentation to Alaskan Miners Association
- Presentation to Fairbanks Chamber of Commerce Transportation Committee
- Next scheduled public meetings:
  - Jan 2012 ARRC Projects Open House in Fairbanks
  - Spring 2012 NRE Public Meeting in Salcha

## Funding Details

	FRA FUNDS		STATE FUNDS		TOTAL
	Spent	Balance	Spent	Balance	FUNDING
<b>Construction</b>	\$ 1,665,605	\$ 84,578,583		\$ 70,155,812	\$ 156,400,000
<b>Eng., Design, Permitting</b>	\$ 13,554,252		\$ 133,776	\$ 3,811,972	\$ 17,500,000
<b>Right-of-Way</b>	\$ 635,384				\$ 635,384
<b>Construction Admin.</b>	\$ 3,674,217	\$ 91,959	\$ 167,472	\$ 7,330,968	\$ 11,264,616
<b>Contingency</b>				\$ 2,400,000	\$ 2,400,000
<b>Totals</b>	<b>\$ 19,529,458</b>	<b>\$ 84,670,542</b>	<b>\$ 301,248</b>	<b>\$ 83,698,752</b>	<b>\$ 188,200,000</b>

# Northern Rail Extension Phase 1

## Schedule

Original Estimated Schedule completion Date:

August 2014

Current Estimated Schedule completion Date

August 2014

## Project Milestones

Major Project Milestones		
	Date	Status
<b>Final Design and Permits</b>	July-11	Complete
<b>Construction Contract</b>	July-11	Complete
Office Complex & Staging Area	November-11	
Utility Relocation	November-11	
East Bank Levee	August-12	
West Bank Spur Dikes	September-13	
Bridge Sub-Structure	March-14	
Bridge Super-Structure	March-14	

## ARRC Project Staff

### **On-Site Project Manager**

Mark Peterburs – Project Director  
Salcha Project Office  
748-1767 or 378-1762 (interior number)  
[peterbursm@akrr.com](mailto:peterbursm@akrr.com)

### **Anchorage Staff**

Tom Brooks – ARRC Chief Engineer  
327 West Ship Creek Avenue  
Anchorage Ak, 99501  
907-265-2595  
[brookst@akrr.com](mailto:brookst@akrr.com)

Clark Hopp – Director Special Projects  
327 West Ship Creek Avenue  
Anchorage Ak, 99501  
907-265-2372  
[hoppcc@akrr.com](mailto:hoppcc@akrr.com)

[www.northernrailextension.com](http://www.northernrailextension.com)