

## Bridge MP 370.7 Pier Replacement & Embankment Protection

### Project Description

The Alaska Railroad Corporation (ARRC) is replacing a flood-threatened pier and strengthening rip rap along the south bank of the Nenana River Bridge at railroad MP 370.7 (approximate Parks highway MP 260) near Ferry, Alaska.

### Purpose and Need

The three-span, 482 foot-long MP 370.7 Bridge was constructed in 1925. In September 2012, flooding severely eroded the embankment and scoured the riverbed at the bridge piers. Emergency repairs were made in 2015 to fill a large scour hole at Pier 3. ARRC determined it necessary to replace pier #3 with a deep foundation pier in order to protect the long term integrity of the bridge and for ARRC to continue to provide rail service between Anchorage and Fairbanks. The project will replace the threatened pier with a deep foundation pier, remove an adjacent old pier, and strengthen riprap protection along the south river embankment.

### Benefits

The project's primary objective is to preserve safe and effective railroad operations by repairing and preventing future scour and erosion damage at the bridge site. Strengthening the system now will help ARRC avoid potential emergency track outages, maintain rail operations, and reduce future maintenance costs.

### Status

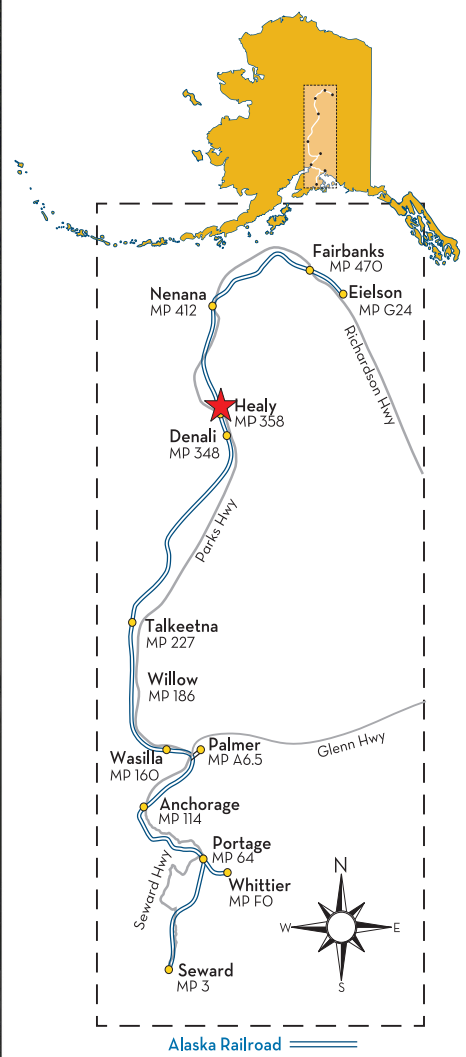
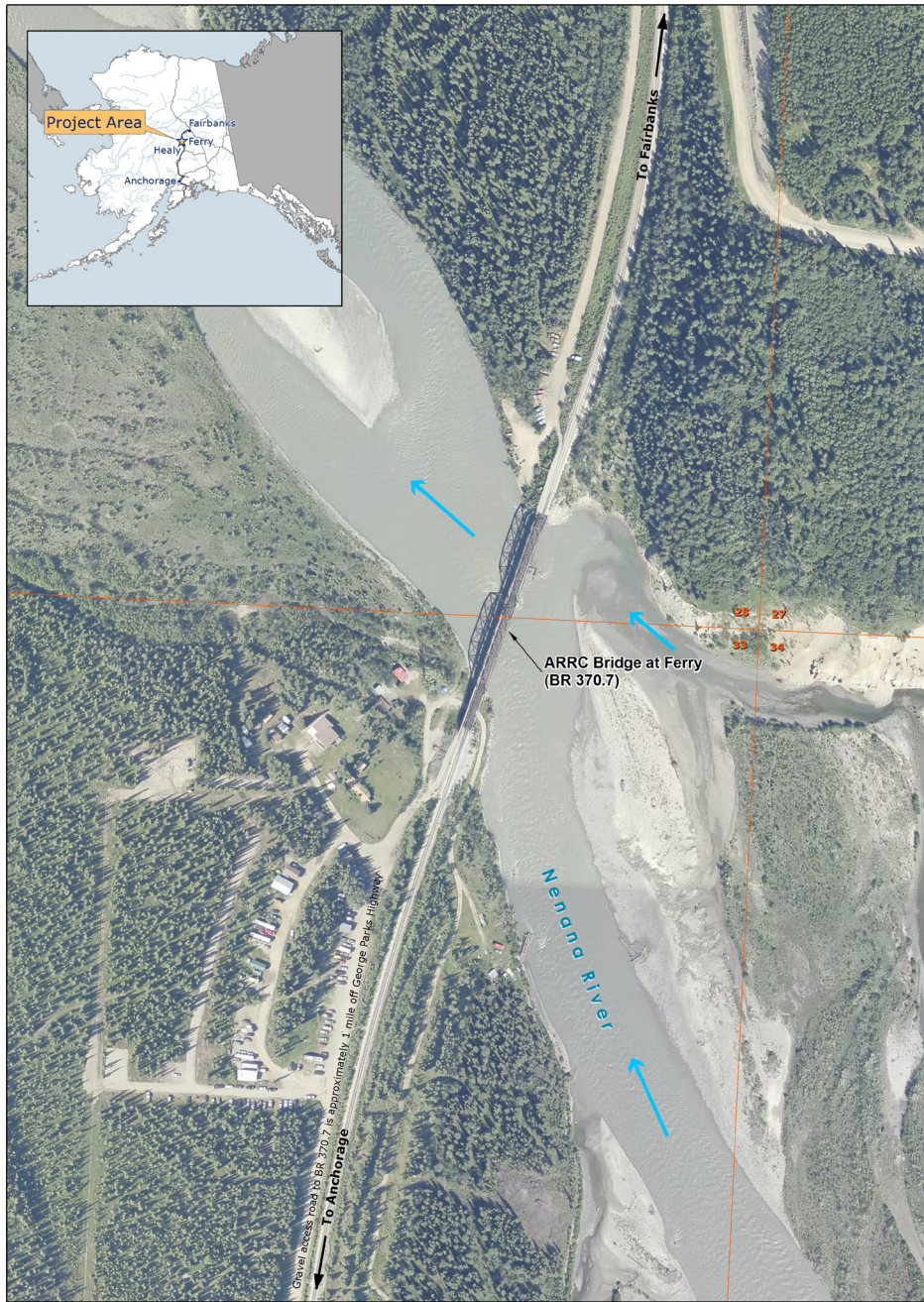
Permits for in-water work were obtained from the U.S. Army Corps of Engineers and the Alaska Department of Fish and Game. Construction began in January 2018. Drilling and new pier shafts were completed in spring 2018. Structural steel work was completed fall 2018. Demolition of the old pier was completed January 2019. Concrete struts will be completed in February 2019. Final riprap and stabilization, and project completion, are scheduled for June 2019.

### Funding and Information

The project is fully funded: 75% by FEMA and 25% by State of Alaska Department of Homeland Security and Emergency Management. See the project area map on the following page. For construction-related questions or concerns, contact Dave Kabella, Senior Project Manager for Capital Projects, at [kabellad@akrr.com](mailto:kabellad@akrr.com). For more information about this or other ARRC projects, visit [www.alaskarailroad.com/corporate/projects](http://www.alaskarailroad.com/corporate/projects).



## Project Area Map Bridge MP 370.7 Pier Replacement & Embankment



**LEGEND**

- Section
- ← Flow Direction



Figure 1. ARRC BR 370.7

Project Location



Map Projection: NAD 83 AEP 3 Feet  
 Data Source: ARRC, 10/08  
 Author: HDR Engineering, Inc.  
 Date: 01 Nov 2017



## Bridge MP 370.7 Pier Replacement & Embankment Protection

### Why is ARRC doing this project?

Bridge 370.7 carries The Alaska Railroad Corporation (ARRC)'s mainline track and communication utilities. Approximately 2 passenger trains per day and 6 freight trains per day cross the bridge in peak season (2 to 4 passenger trains per week and 4 freight trains per day in off-peak season). The bridge, originally constructed in 1925, was damaged by severe flooding in 2012. The proposed project will increase the bridge's structural stability, strengthen the embankment, and reduce future flood-related damage.

### What alternatives were considered?

The ARRC considered constructing a new bridge or permanently or temporarily realigning of mainline track. These alternatives were removed from consideration due to cost, potential system disruptions, and feasibility. The current steel spans have substantial remaining service life.

### When will construction begin?

Construction to replace Pier 3, remove an older pier, and strengthen riprap began in January 2018 and the project will be complete by June 2019. Construction access will be provided via a temporary trestle. All work will be performed within the existing ARRC right-of-way.

### Will I be able to access my property across the river?

Yes. ARRC, in general, will maintain pedestrian access throughout construction; there may be temporary short interruptions to pedestrian access. Landowners will be able to cross using the ice as is customary during the winter, although the location may be moved slightly to improve worker safety. Some temporary access closures may occur during key construction activities.

### Will the project impact hunting?

The project is not expected to impact the hunting season.

### How can I learn more?

The ARRC intends to host a public open house in late January in the Ferry or Healy area. A second mailing will address specifics of this meeting including location, date, and time. Project staff will be available to answer questions and learn more about how landowners currently access their property on the north side of the river. Comments received at the public open house will help the ARRC further address access strategies during the construction period.

For construction-related questions or concerns, contact Dave Kabella, Senior Project Manager for Capital Projects, at [kabellad@akrr.com](mailto:kabellad@akrr.com).

For more information about this or other ARRC projects, [www.alaskarailroad.com/corporate/projects](http://www.alaskarailroad.com/corporate/projects).