

# Bridge 370.7 Repair

## Project Description

The Alaska Railroad Corporation (ARRC) will repair the three-span 482-foot bridge that crosses the Nenana River at ARRC milepost 370.7 (approximately MP 260 on the Parks Highway) near Ferry, Alaska. The project will replace worn bearings on the south-end span (span #1) with new bearings.

## Purpose and Need

- To extend the useful life of the steel truss and thru-plate girder bridge originally constructed in 1925.
- To protect the \$17 million capital investment in 2018-2019 that replaced flood-damaged pier #3 with a deep foundation pier, and that strengthened the river embankment.
- Component replacement will help ensure railroad infrastructure remains in a state of good repair. The integrity of critical rail corridor infrastructure ensures the safety and reliability of passenger and freight train operations to meet rail business demands. General bridge rehabilitation benefits are outlined in greater detail in the *2021 Bridge Program fact sheet*.

## Status

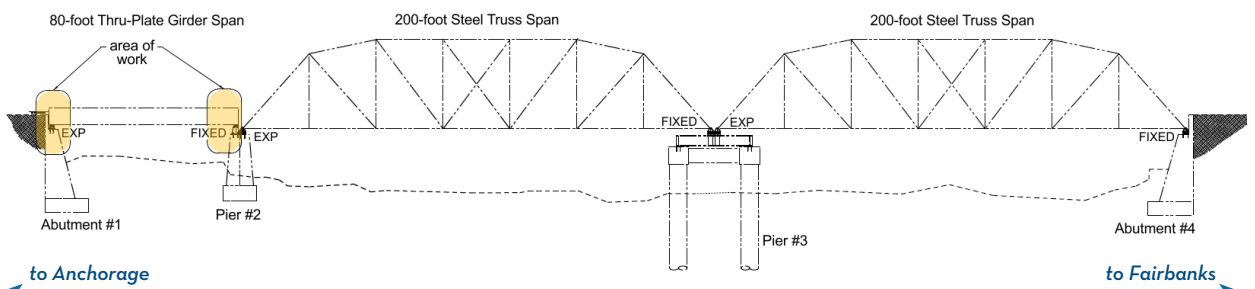
- Preliminary engineering, studies and environmental reviews were completed in 2020.



Looking at Bridge 370.7 over the Nenana River from the south-end abutment.

- Environmental documentation and permitting will be completed in early 2021.
- Project construction will be bid in March 2021, with a contractor selected by early spring 2021.
- Construction is scheduled to begin in 2022 and will continue into late summer / fall 2022.
- Project completion is estimated by the end of the fourth quarter of 2022.

## Project Area - Span #1 Bridge MP 370.7

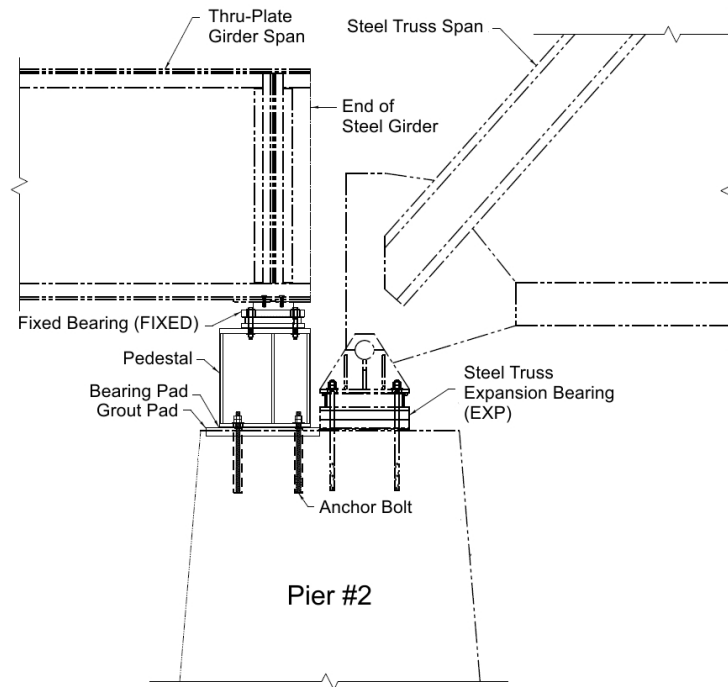


## Cost and Funding

The project budget is \$751,000. Project funding is 80% by the Federal Transit Administration (FTA) and 20% by the Alaska Railroad to satisfy the matching contribution required by FTA grants.

## More Information

For more project information, email the Alaska Railroad at [Public\\_Comment@akrr.com](mailto:Public_Comment@akrr.com). The 2021 ARRC Bridge Program fact sheet is available at [AlaskaRailroad.com](http://AlaskaRailroad.com) > Corporate > Projects (look under *Systemwide Projects*).



**2021 project work will include bearing replacement at Pier #2, where the thru-plate girder span connects to one of the two steel truss spans. Above-Left: a project drawing indicates the location of the fixed and expansion bearings on Pier #2. Above-right: a photo shows the juncture of two spans at Pier #2.**



**Bridge 370.7 crosses the Nenana River near the small, remote community of Ferry, Alaska.**

