

Bridge 3.7 Replacement

Project Description

The Alaska Railroad Corporation (ARRC) is proposing the replacement of the bridge located at milepost (MP) 3.7 of the mainline, over Salmon Creek, in Seward, Alaska. The existing bridge consists of seven (7) 15-foot timber spans. This project will replace the existing bridge with four (4) new 28-foot steel ballast deck (SBD) bridge spans, as well as new piers, abutments, caps, sheet pile bulkheads and a track raise. This work is necessary for the safety and reliability of this critical infrastructure.

Project Scope

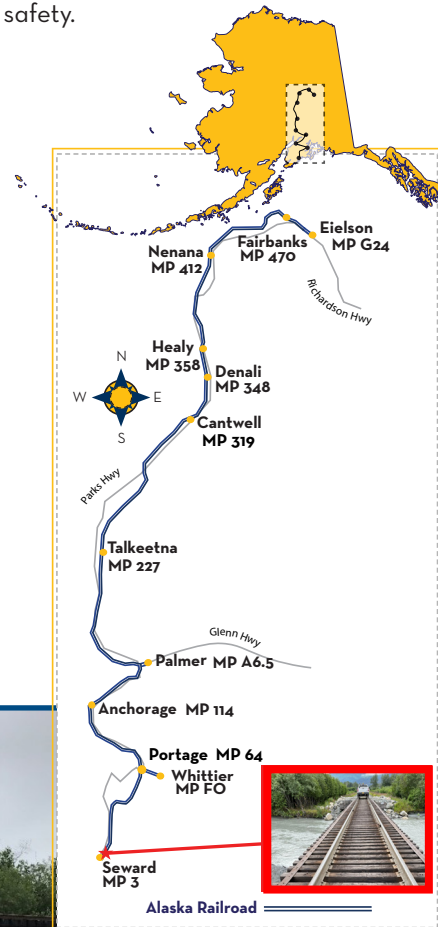
Replacement of the seven (7) 15-foot timber spans will include:

- Removal of existing timber spans and bents.
- Installation of new sheet pile bulkheads, piles and caps.
- Installation of new steel ballast deck bridge spans and trainman's walkway.
- Raise track profile elevation approximately 4-feet to mitigate flood impacts.

Benefits

Bridge replacement will address and improve the following conditions:

- Improve overall track stability and operating safety.



Bridge 3.7 crosses Salmon Creek in Seward, Alaska. The project will include replacing the existing seven (7) 15-foot timber spans with four (4) new SBD bridge spans.

PROJECT FACTS

- Reduce ongoing cost to maintain aging bridge infrastructure.
- Improve flow conditions up and down stream of the bridge.

Status

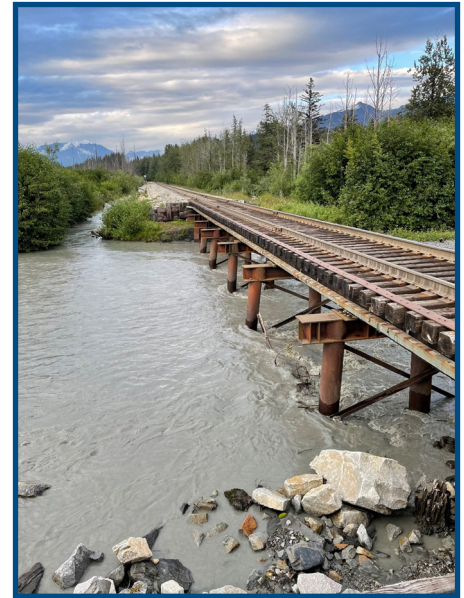
- Environmental review and project design is underway.
- Upon National Environmental Policy Act (NEPA) approval, final design and permitting will be completed; then ARRC will solicit a construction contractor.
- Construction is anticipated to begin fall 2026.
- Project completion is expected by spring 2027.

Cost and Funding

The project is expected to be funded 80% by the Federal Transit Administration (FTA) with the required 20% match by ARRC.

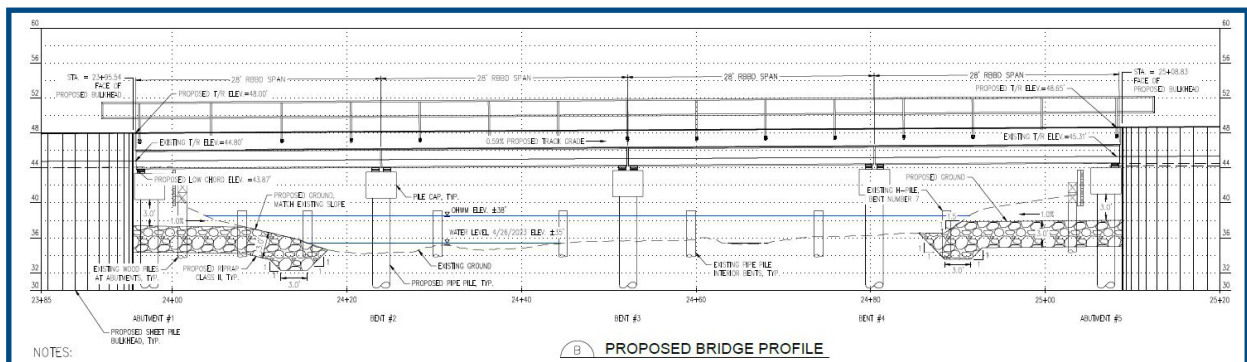
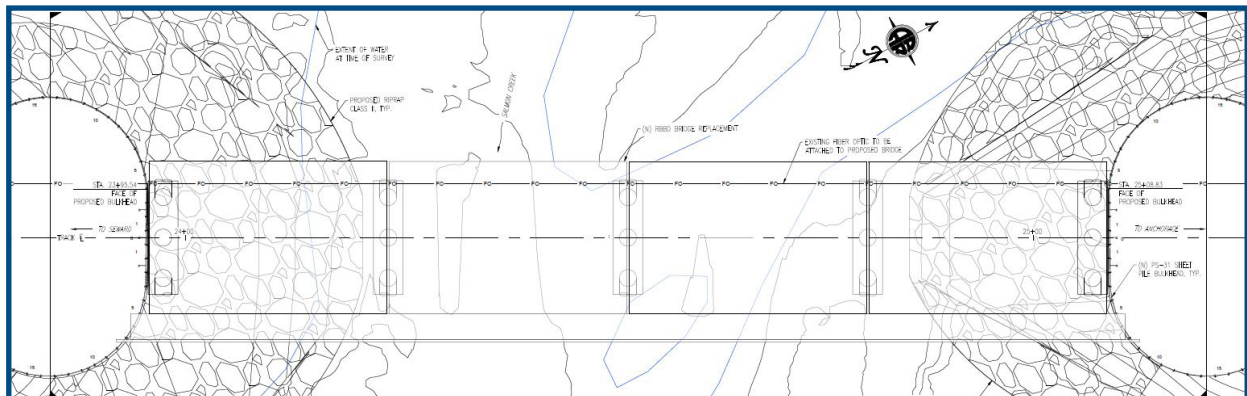
More Information

For more information or comment, email the Alaska Railroad at Public.Comment@akrr.com. The ARRC Bridge Program fact sheet is available online at AlaskaRailroad.com > Corporate > Projects (look under *Systemwide Projects*).



Bridge 3.7 will raise track profile elevation approximately 4-feet to mitigate flood impacts.

Bridge 3.7 Plans - Top View



Bridge 3.7 Plans - Side View