

Bridge 127.5 Replacement

Project Description

The Alaska Railroad Corporation (ARRC) will replace the 308-foot deck girder bridge that crosses Eagle River at ARRC milepost 127.5, just north of Anchorage. The project will replace the aging structure with a new 360-foot triple-span deck plate girder bridge.

Purpose and Need

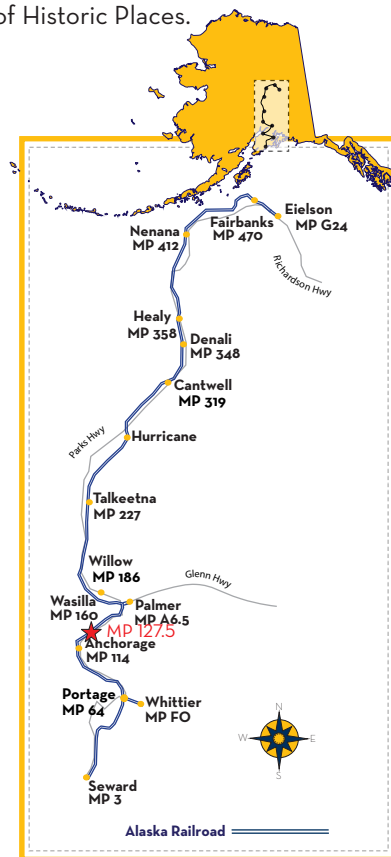
Bridge replacement will help ensure railroad infrastructure remains in a state of good repair. The integrity of bridge infrastructure ensures the safety and reliability of rail operations. General bridge rehabilitation benefits are outlined in the current *Bridge Program* fact sheet.

Status

- Preliminary project studies, environmental reviews, design and permitting began in 2020.
- HDR was selected in December 2021 to assist with design review.
- Environmental review required by the National Environmental Policy Act (NEPA) completed and submitted to FTA in 2022.
- Section 106 of the National Historic Preservation Act requires that each federal agency identify and assess the effects its actions may have on historic properties. Under Section 106, each federal agency must consider public views and concerns about historic preservation issues when making final project decisions. FTA has determined that the project would have no adverse effect on resources listed on, or eligible for, the National Register of Historic Places.



Bridge 127.5 crosses Eagle River north of Anchorage.



PROJECT FACTS

- Kiewit was selected as construction contractor in 2022.
- Construction began April 2025 and will continue into the second quarter of 2027.
- Completion is estimated by the end of 2027.

Cost and Funding

The project cost estimate is \$43.3 million funded 80% by the Federal Transit Administration, with the 20% required match funded by the Alaska Railroad.

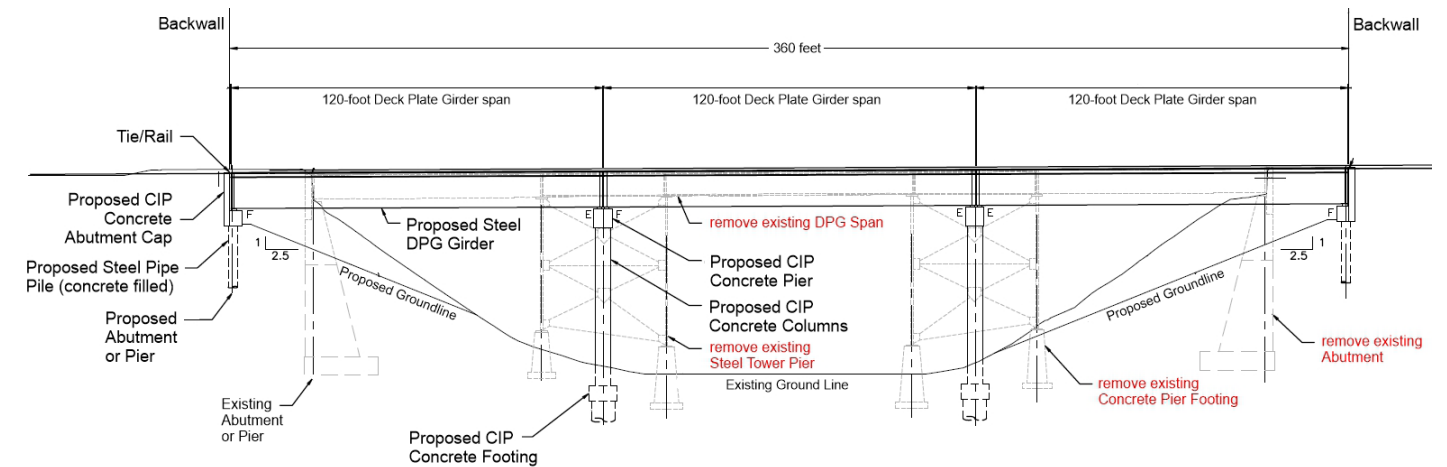


View of top of the bridge at Milepost 127.5, looking south.

More Information

For more project information, email the Alaska Railroad at Public_Comment@akrr.com. The ARRC Bridge Program fact sheet is available online at AlaskaRailroad.com > Corporate > Projects (look under Systemwide Projects).

Project Area - Bridge MP 127.5, Side View



Project Area - Bridge MP 127.5, Top View

