

Bridge 152.1 and 152.3 Replacement

Project Description

The Alaska Railroad Corporation (ARRC) proposes bridge replacements at ARRC mileposts (MP) 152.1 and 152.3, over Spring Creek and an unnamed tributary to Spring Creek, south of Wasilla, Alaska. To accommodate the new bridges, the track would be raised up to a maximum of 11-inches between MP 152.43 and MP 151.85.

Bridge 152.1

The existing bridge at MP 152.1 is a 70-foot-long timber trestle bridge comprised of five (5), 14-foot timber spans over six (6) timber bents consisting of five (5) timber piles each, and timber abutments. The existing bridge would be entirely replaced with a single-span, 52-foot steel beam ballast deck bridge supported on steel pipe piles, concrete caps, and abutments.

Bridge 152.3

The existing bridge at MP 152.3 is a 28-foot-long timber trestle bridge comprised of two (2), 14-foot timber spans over three (3) timber bents consisting of five (5) timber piles each, and timber abutments. The existing bridge would be entirely replaced with a single-span, 33-foot steel beam ballast deck

bridge supported on steel pipe piles, concrete caps, and abutments.

Track Raise

The proposed bridge configurations will require a track elevation raise up to a maximum of 11-inches throughout the 1,950-foot corridor, between MPs 151.85 and 153.43. The track embankment will be sloped and graded such that the increased elevation will meet at the existing toe of embankment, thereby preventing permanent fill beyond the existing footprint.

Purpose and Need

The project will replace two bridges which are reaching the end of their useful life spans. The purpose of this project is to enhance the stability of the track infrastructure, protect critical state infrastructure, improve safety for the ARRC and its customers, including passengers, and maintain the integrity of the railroad.

Status

- Preliminary Engineering and Environmental review is underway.



Bridge 152.1 crosses Spring Creek south of Wasilla.



PROJECT FACTS

- Upon National Environmental Policy Act (NEPA) approval, final design and permitting will be completed; then ARRC will solicit a construction contractor to complete the work.
- Construction is anticipated to begin in fall 2026.
- Project completion is expected by late 2027.

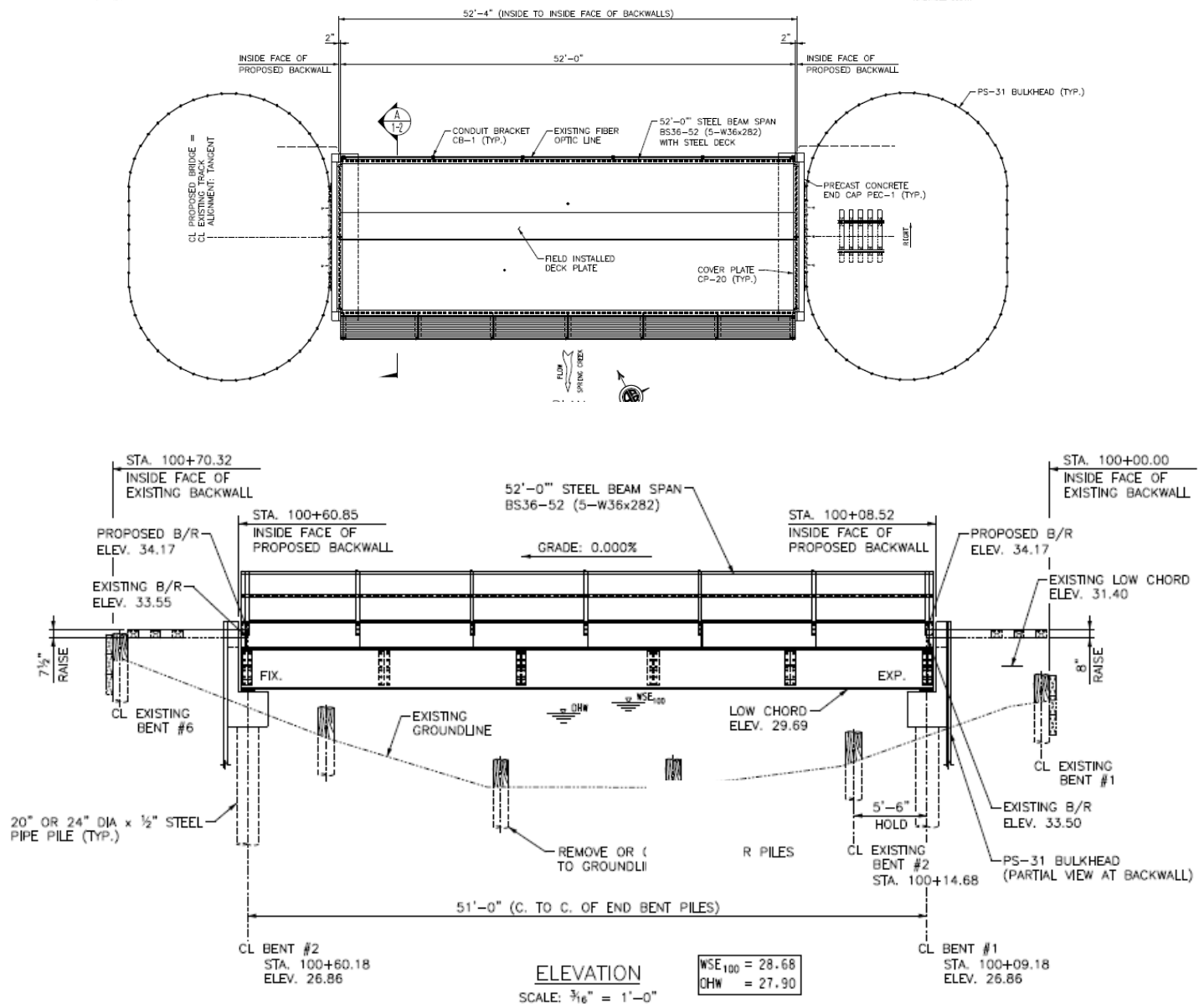
Cost and Funding

The project is expected to be funded by the Federal Transit Administration (FTA) with a 20% match by ARRC.

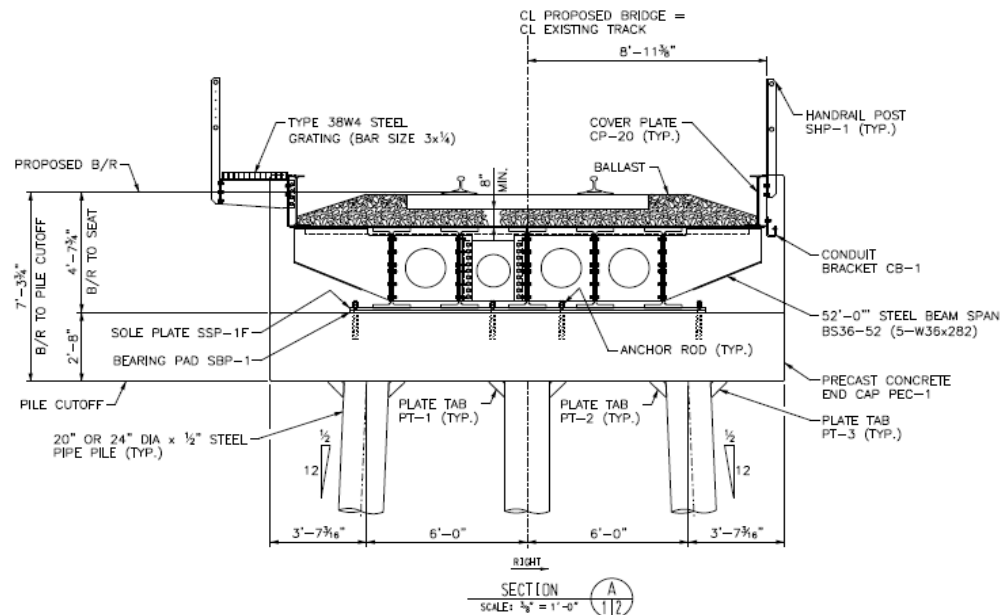
More Information

For more project information, email the Alaska Railroad at Public.Comment@akrr.com. The ARRC Bridge Program fact sheet is available online at AlaskaRailroad.com > Corporate > Projects (look under Systemwide Projects).

Project Area - Bridge MP 152.1, Cross Section and Profile Views



Project Area - Bridge MP 152.1, Cross Section



Bridge 152.3 crosses a tributary of Spring Creek south of Wasilla.



Project Area - Bridge MP 152.3, Cross Section and Profile Views

