

ALASKA

RAILROAD

SEWARD TERMINAL

IMPROVEMENTS 2016 & Beyond

FREIGHT DOCK



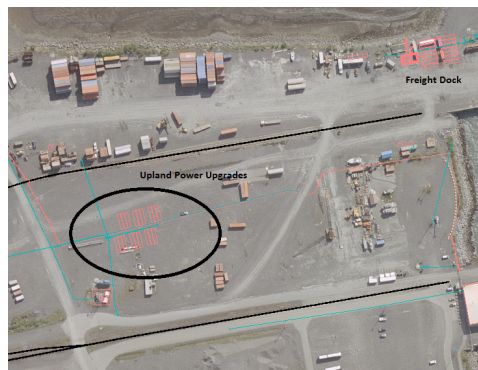
Recent Dock Upgrades

In 2016, the Alaska Railroad upgraded the Freight Dock to accommodate fishing vessels seeking to unload their catch in Seward. Improvements include an 8,000+ square foot paved area at the dock's ocean end, electrical power and water service. The existing light pole provides ample illumination and jersey barriers define the fish unloading area, separating it from other freight operations. Other dock features include:

- **Secure storage:** The dock and uplands are protected by fencing, card-access gates and security camera surveillance.
- **Intermodal availability:** Port Avenue offers easy access to Seward Highway. Freight to rail service also available (requires notice).
- **Top-of-dock elevation:** 20 feet above MLLW (Mean Lower Low Water).
- **Cranes and boom trucks:** available through local Terminal Use Permit Holders.

Upland Power Upgrades

In 2017 the Alaska Railroad anticipates installing reliable power for refrigerated containers both in the secure storage area and accessible yard. The new electric service will provide two areas of available peak load managed plug-ins with pedestals for container storage prior to transport.





The Alaska Railroad (ARRC) began Master Planning for railroad assets in Seward in August 2015. Managed by the railroad, the project involves lead contractor PND Engineers, assisted by sub-contractors including E3 Environmental, Hanson, DOWL, Bettisworth North, and Cardno. The \$3 million project is funded by a \$2.5 million U.S. Dept. of Transportation TIGER VI (National Infrastructure Investments) grant managed through the Maritime Administration (MARAD) and ARRC's \$500,000 match.

Project coordination includes site planning for marine, rail, and road, engineering, architecture, economic studies, safety and security improvements, regulatory and environmental needs, and stakeholder support. The project team has held over 100 stakeholder engagement meetings with 180 participants, including 70 businesses, organizations, Seward elected representatives and citizens. This outreach helped define and refine the Project Vision, which guides research and design as the team completes a Passenger Traffic Study, Freight Traffic Study, and Transportation Connectivity Study. The project vision is:

Reimagining travel and trade to enhance economic vitality and increase opportunities in the region by balancing port, rail, and real estate to meet transportation demands.



Study results will help evaluate solutions to meet current and future demands. The project team has refined and narrowed 188 potential project solutions down to 38 to align with four project cornerstones: Passengers, Freight, Commercial Real Estate and Infrastructure. Projects will be designed to work in harmony with each other, with ARRC operations, and with Seward's interests, while considering project phasing and funding.

Between now and Fall 2017, the team will conclude the traffic studies; meet with regulatory agencies; finalize project design concepts and estimates; and produce a Master Plan. The plan aims 20 years in the future to provide separation of freight and passenger activities, improve economic opportunities, and meet growing transportation demands for this nationally and regionally significant port.

Questions?

- **Seward Docks:** Contact Christy Terry, Seward Port Manager (907) 265-2209 or TerryC@akrr.com
- **Seward Master Plan:** visit www.RailportSeward.com or contact Brian Lindamood, Director, Capital Projects (907) 265-3095 or LindamoodB@akrr.com