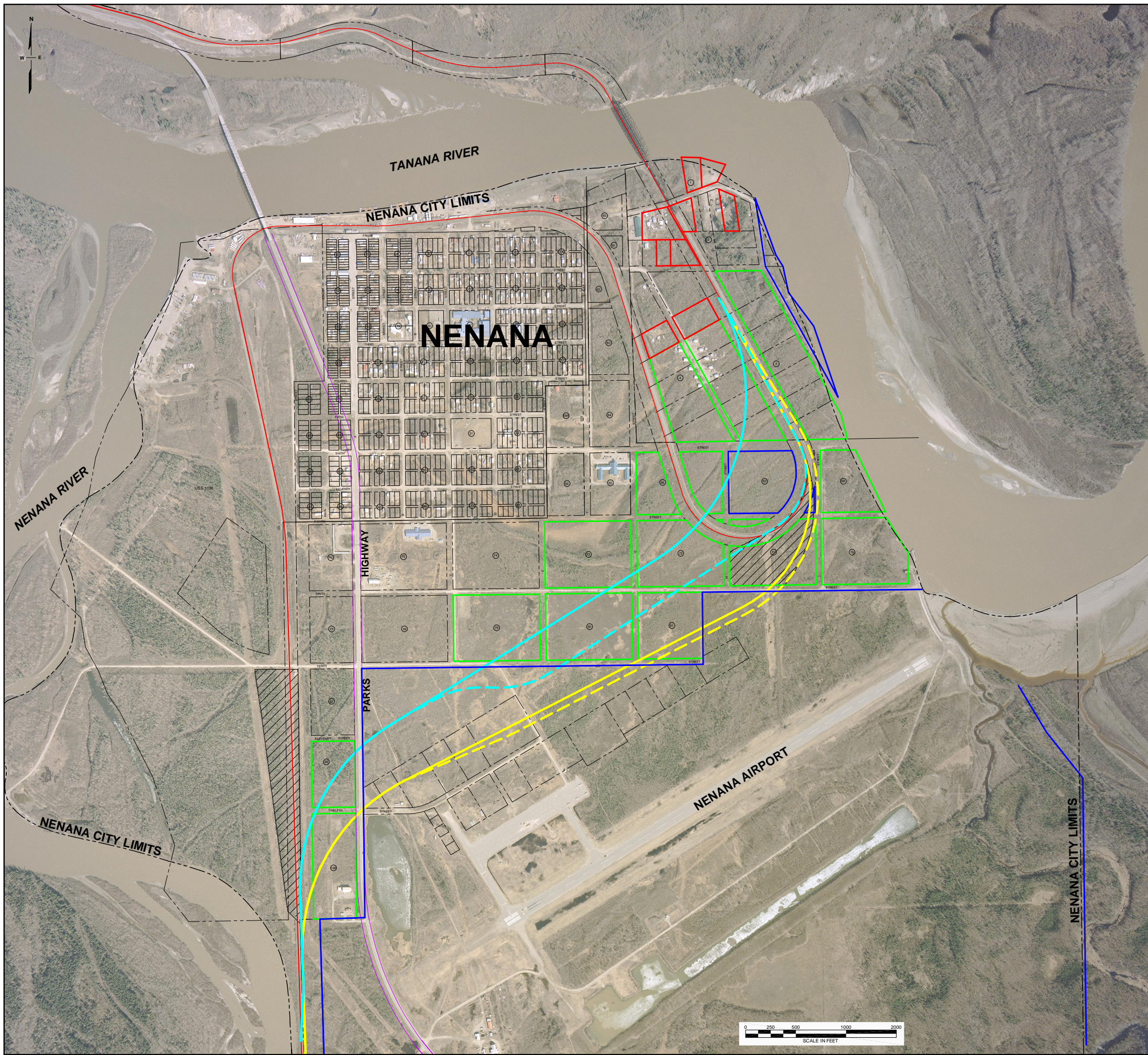



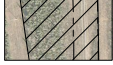






G:\PROJECTS\26219537 NENANA RR\2004 DWG\FIG 7 - LANDSTATUS.DWG; Revised Wed, 25 Aug 2004 - 10:41am; Printed Fri, 27 Aug 2004 - 11:51am



LEGEND

-  EXISTING RAIL ALIGNMENT
-  PROPOSED ACTION (ALTERNATIVE B-2 HIGH PROFILE, OPTIONAL SPUR SHOWN AS DASHED LINE)
-  ALTERNATIVE B HIGH PROFILE (OPTIONAL SPUR SHOWN AS DASHED LINE)
-  STAGING/STOCKPILE AREA (WEST STAGING/STOCKPILE AREA IS LOCATED ON ARRC LAND RESERVES)
-  CITY LAND
-  PRIVATE LAND
-  RESTRICTED TOWNSITE LOTS
-  STATE OF ALASKA GEORGE PARKS HIGHWAY ALIGNMENT

AERIAL PHOTOGRAPHY BY AEROMAP U.S., INC. (5/17/2002)

**ALASKA RAILROAD
NENANA RAIL REALIGNMENT PROJECT**

LAND STATUS MAP



NENANA, ALASKA

JOB NO: 26219537
DATE: 5/19/04

DRAWN: ELK
FILE: FIG 7 - LANDSTATUS.DWG

FIGURE 7

