



# Seward Depot Improvements

# PROJECT FACTS

## Project Scope

The Alaska Railroad (ARRC) is improving passenger train operations with two facility additions nearby the Seward Depot. Improvements include construction of modern restroom facilities and installation of a power connection for passenger trains that are parked at the depot.

Existing restrooms inside the Seward Depot are inadequate to accommodate the number of customers and employees using the depot. Long lines form frequently during peak depot use. Faced with growing train ridership, for the last few years the Alaska Railroad has rented port-a-potties to augment the depot restrooms. This project constructs suitable restroom facilities to replace the rented port-a-potties. The new restroom building is located about 20 feet from the depot.

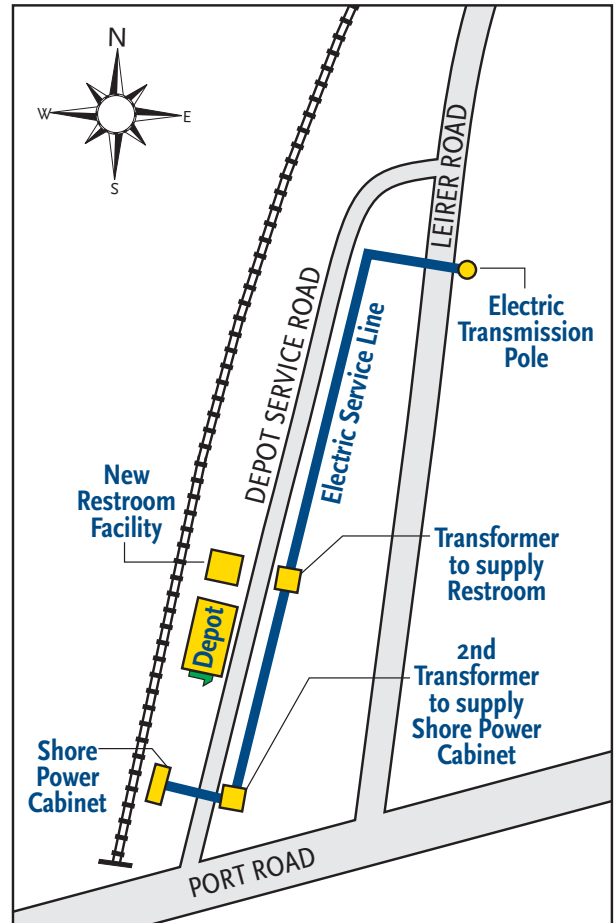
Passenger trains park at the depot on standby while passengers disembark to visit the community



*The Seward Depot May 2009. The ramp and stairs are similar for the restroom facility.*



*A new shore power cabinet system is installed nearby the Depot in Seward.*



of Seward. Currently, power needed to support food and beverage service aboard the train is generated by the locomotives running their engines. This project installs a power hook-up south of the depot and adjacent to the track, providing a plug-in power supply for the train.

## Project Benefits

- Train ridership continues to grow and the restroom addition will accommodate this growth.
- With modern plumbing and electrical systems, the 26-by-24.5-foot building will provide customers with acceptable sanitary facilities.
- Locomotive electrical power connection will minimize locomotive idling, thereby reducing engine wear-and-tear and saving approximately five gallons of fuel per locomotive per hour.
- The community will benefit from reduced engine noise and emissions.

## Status

- Electrical power connection conceptual plans were complete in early 2010. They called for a new underground high-voltage electrical cable to tap into an electric transmission pole on Leirer Street and bring new secondary and shore power service to the plug-in outlet adjacent to the track.
- Restroom design was complete in early 2010 and called for separate mens and womens facilities.



*Construction of the new Seward Depot Restroom facility is essentially complete in 2010.*

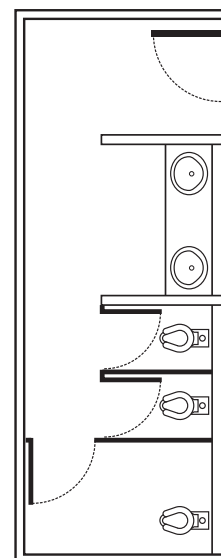
- Environmental analysis and documentation required by the National Environmental Policy Act (NEPA) was completed in spring 2009.
- Restroom construction and power installation began in fall 2009 and were essentially completed in 2010.
- In 2011, restroom guardrails will be installed and the area around the power cabinet will be paved.

## Project Cost and Funding

- Restroom facility cost is estimated at \$500,000.
- Shore power cost is estimated at \$250,000.
- Both projects are funded 100% by the American Recovery and Reinvestment Act of 2009 through a grant administered by the Federal Transit Administration.



### WOMEN



### MEN

