




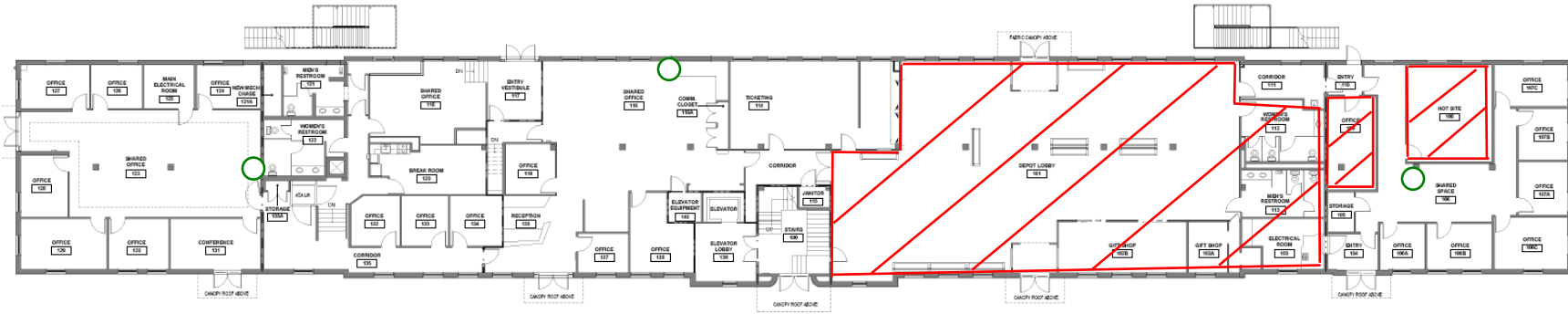
# Attachment 1: ARRC Anchorage Office Janitorial Maps

-  Not Under Contract
-  Janitorial Closets
-  Recycle Locations

Please Note the Maps are not to scale, please refer to the contract for Square Footages

## AHD 1: 401 - 431 W 1<sup>st</sup> Ave.

### ALASKA RAILROAD HISTORIC DEPOT FIRST FLOOR PLAN

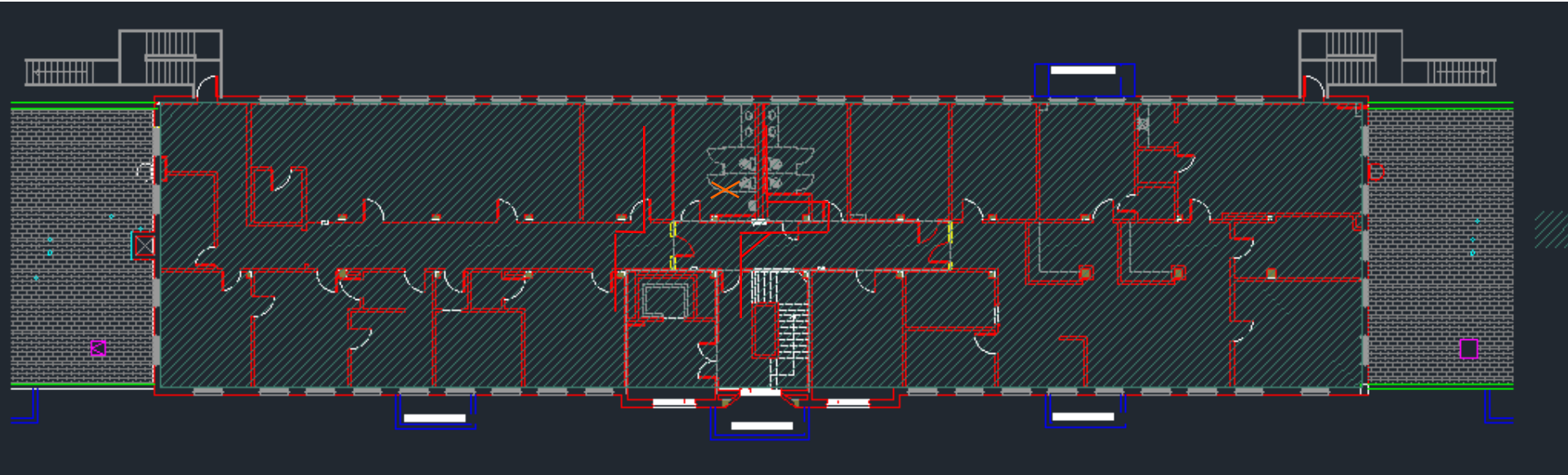


## AHD 2: 421 W 1<sup>st</sup> Ave.

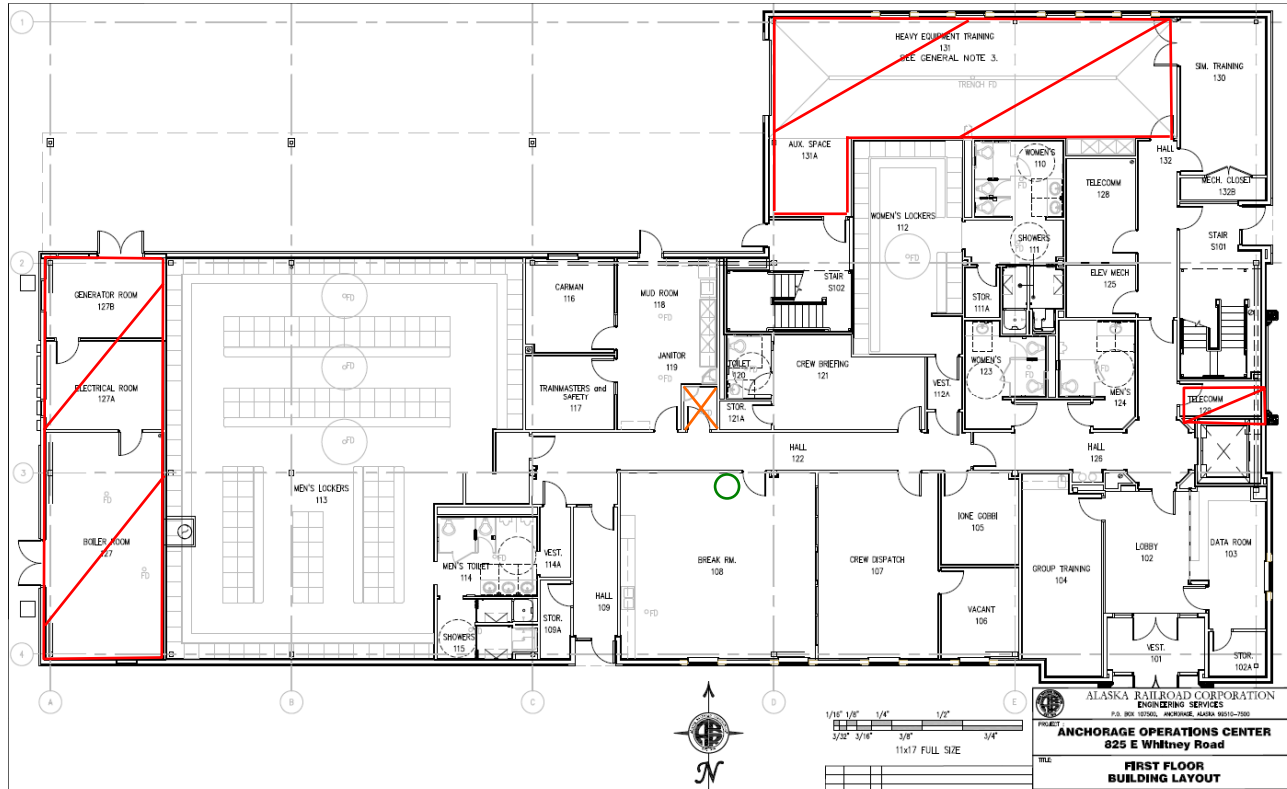
### ALASKA RAILROAD HISTORIC DEPOT SECOND FLOOR PLAN



AHD 3: 421 W 1<sup>st</sup> Ave.



AOC 1: 825 Whitney Rd.

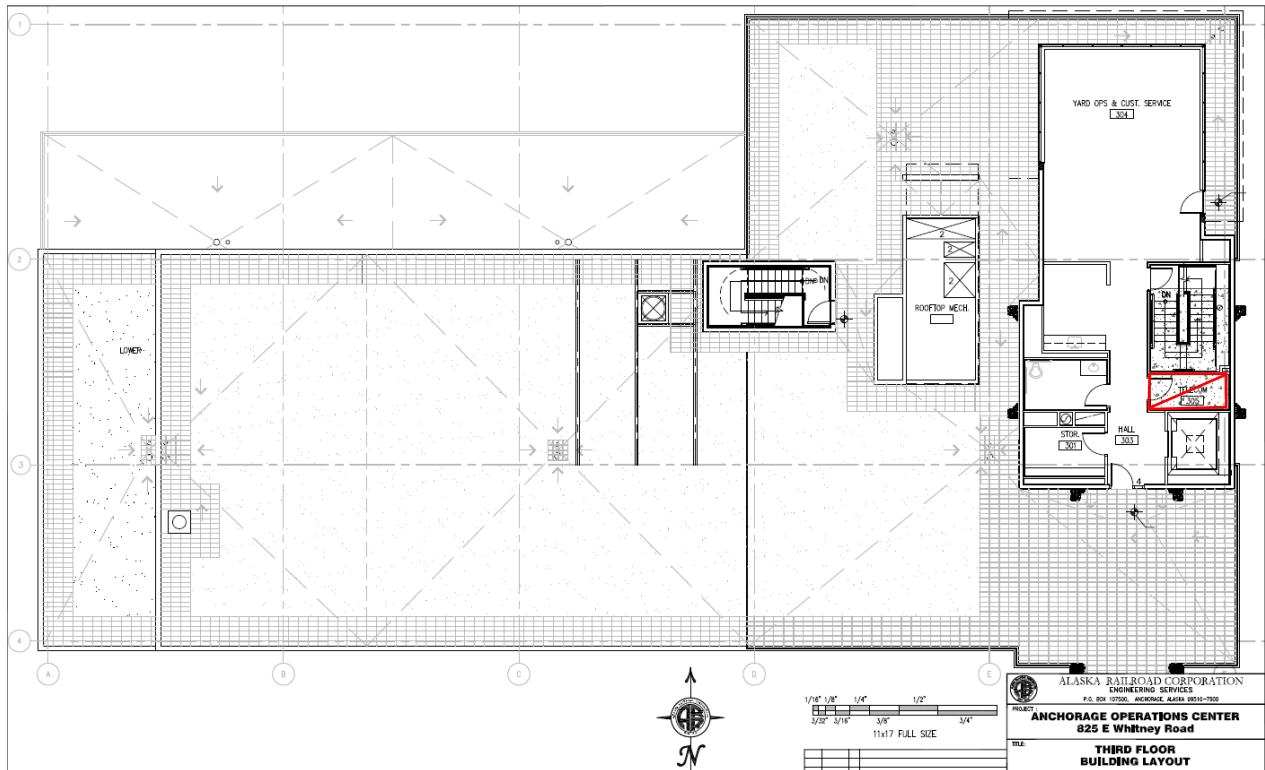


ALASKA RAILROAD CORPORATION  
 ENGINEERING SERVICES  
 P.O. BOX 107500, ANCHORAGE, ALASKA 99510-7500  
 PROJECT: **ANCHORAGE OPERATIONS CENTER**  
**825 E Whitney Road**  
 TITLE: **FIRST FLOOR BUILDING LAYOUT**

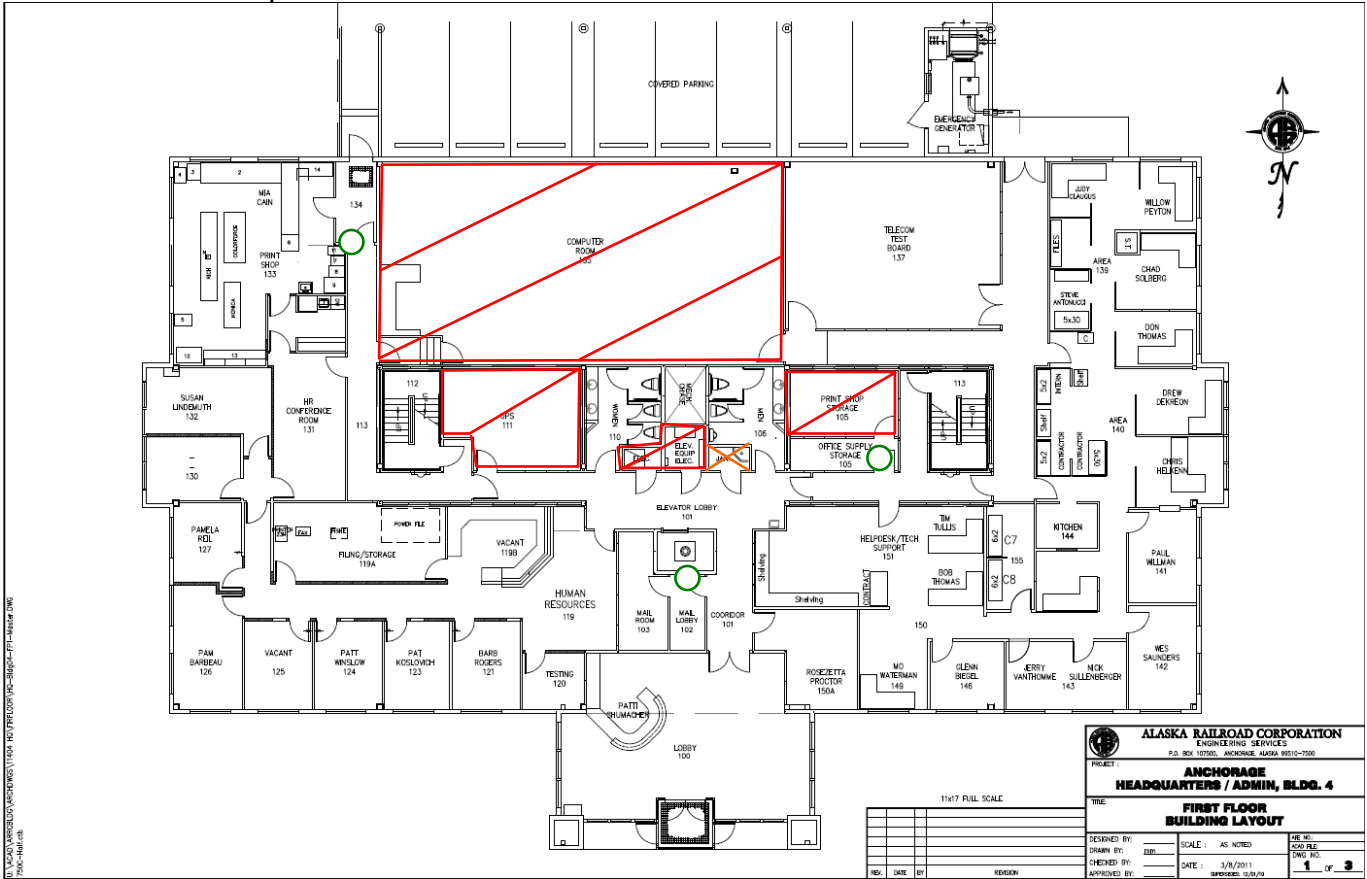
**AOC 2: 825 Whitney Rd.**



**AOC 3: 825 Whitney Rd.**



**GOB 1: 327 W Ship Creek Ave.**



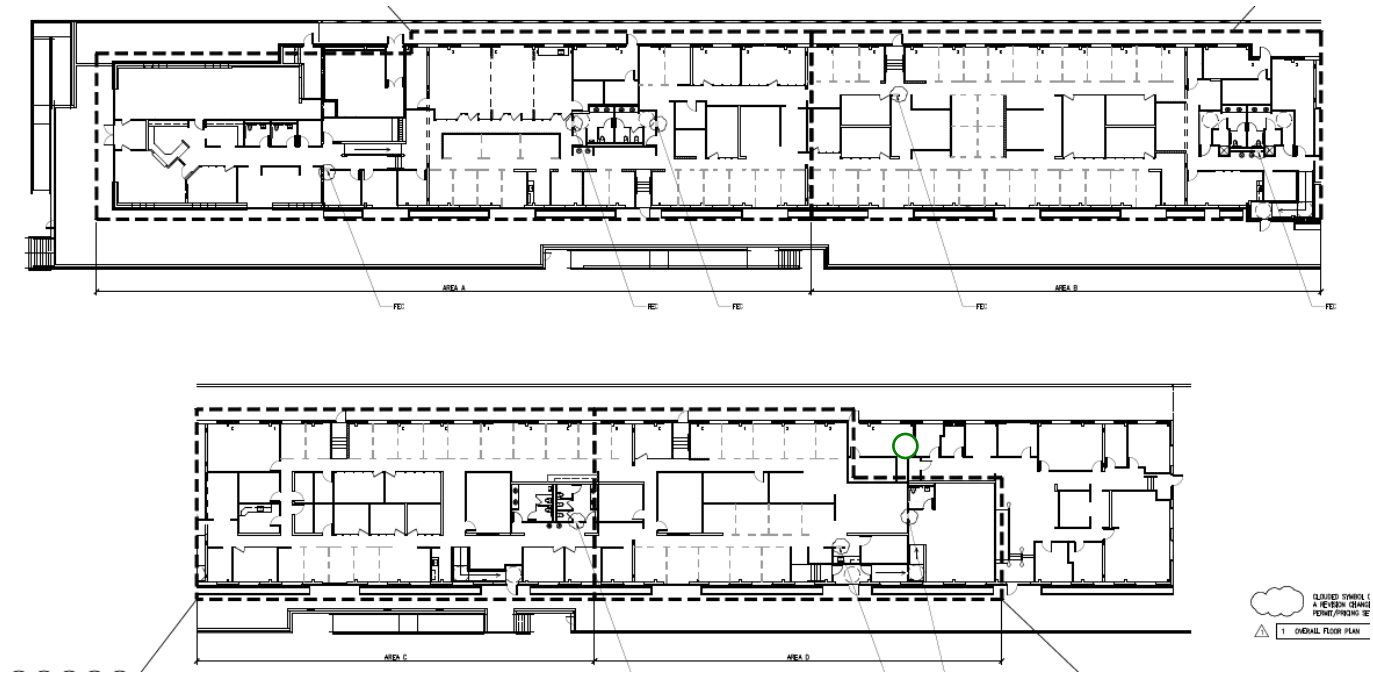
**GOB 2: 327 W Ship Creek Ave.**



**GOB 3: 327 W Ship Creek Ave.**



**B-16 : 161 E 1<sup>st</sup> Ave.**



S&T: 1224 Whitney Rd.

