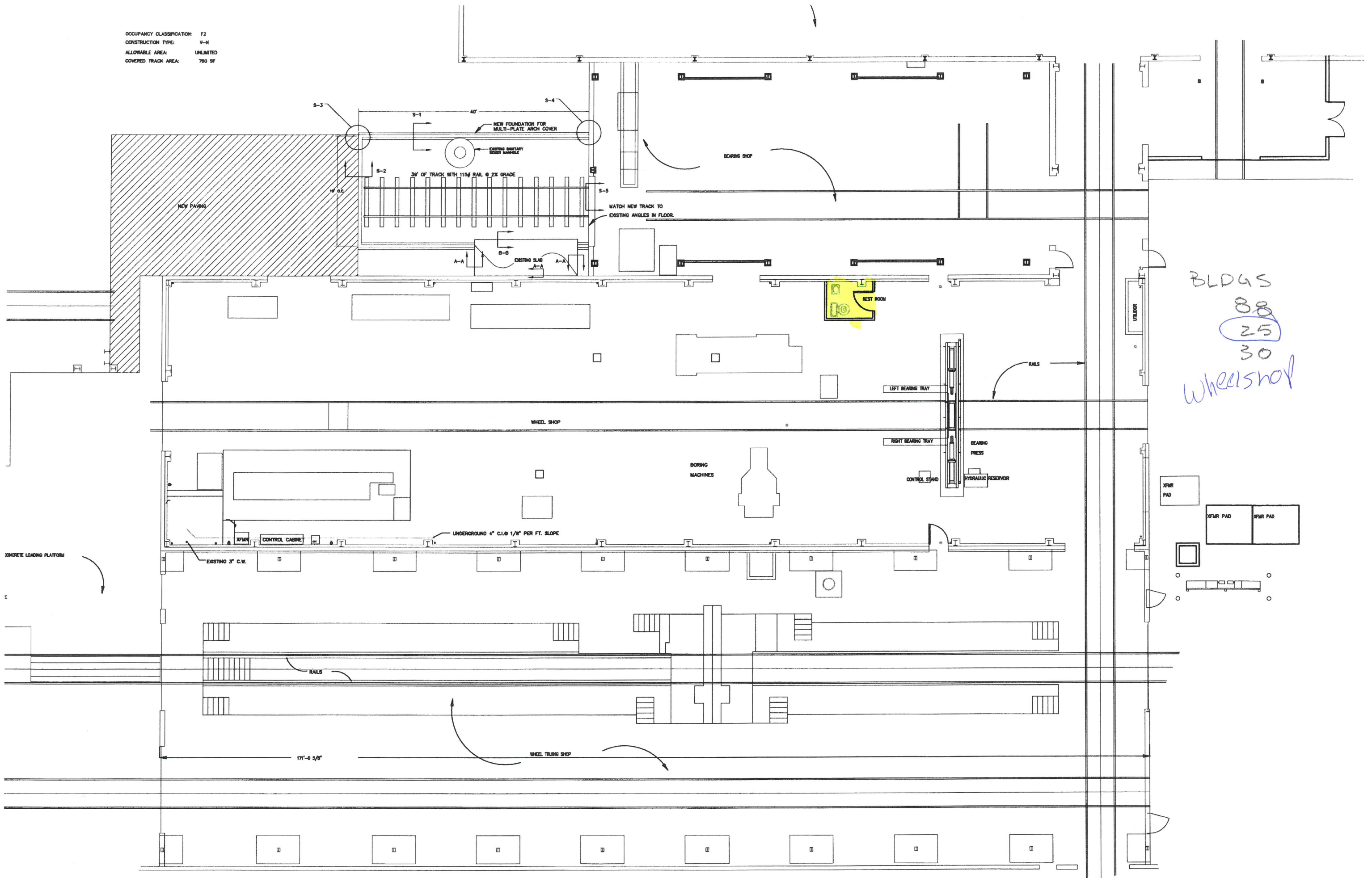
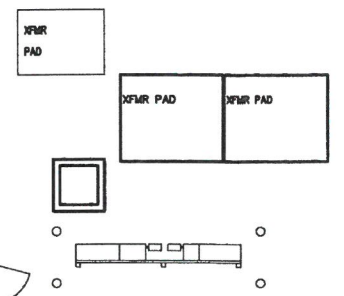
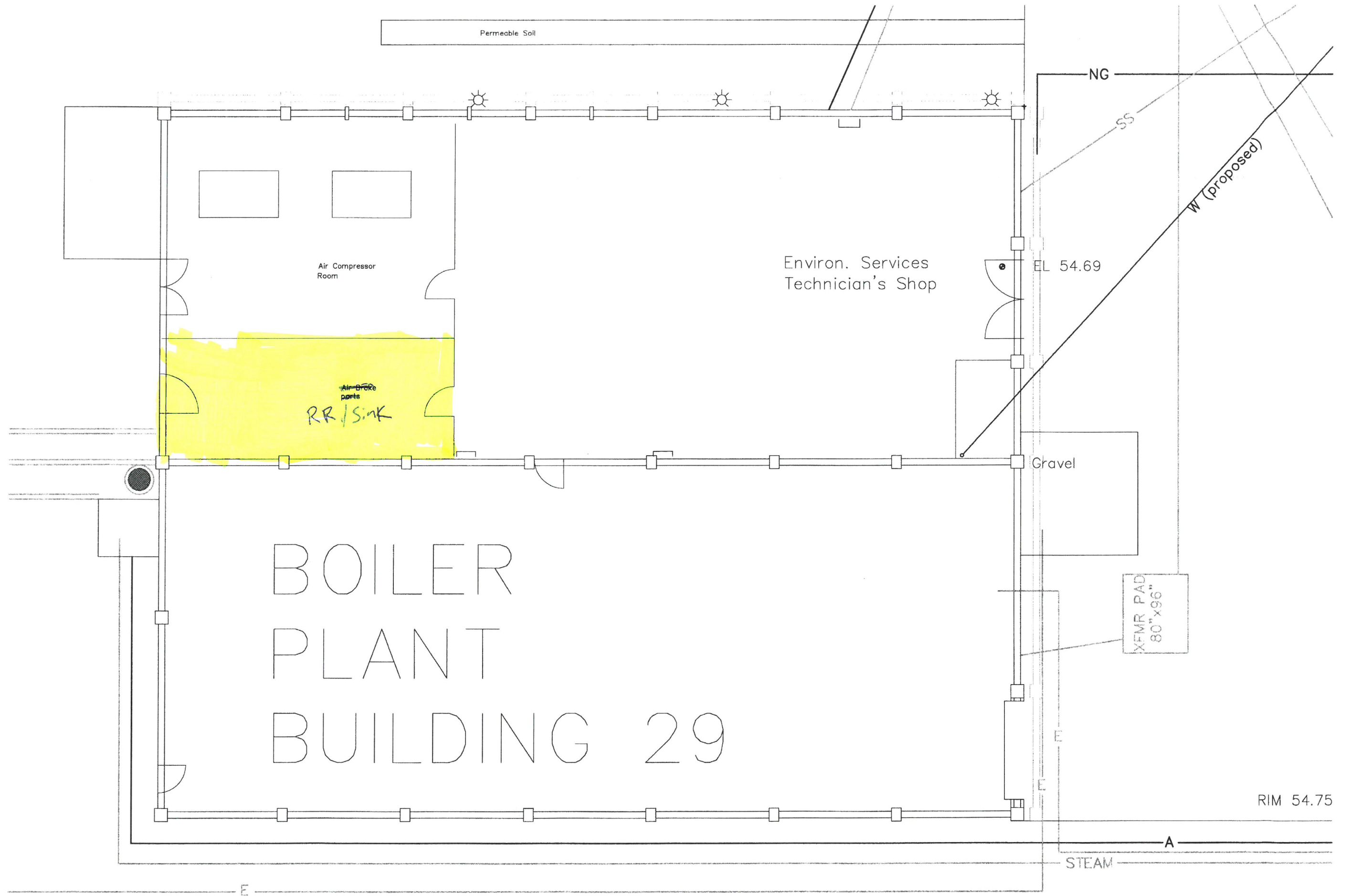


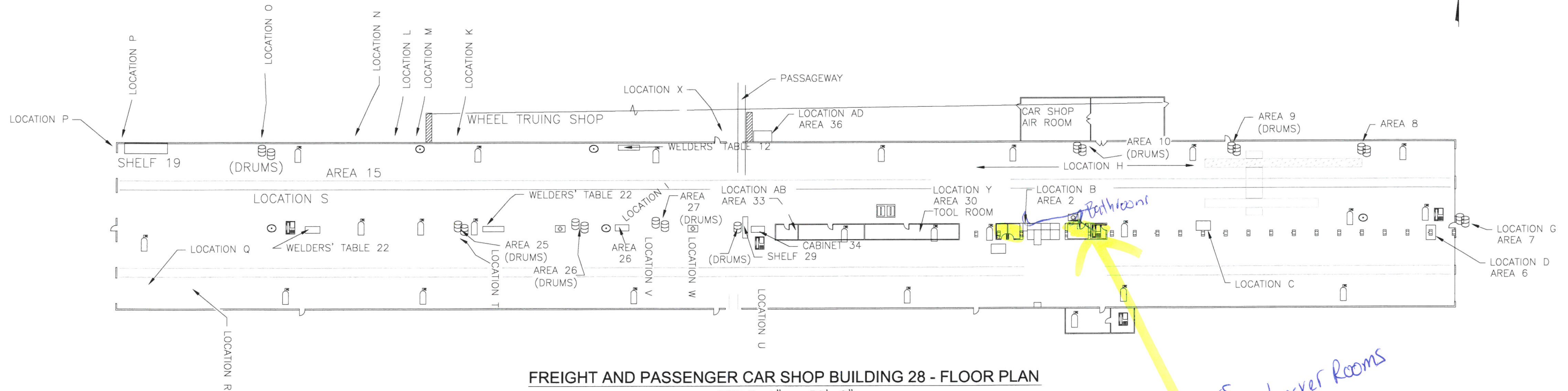
OCCUPANCY CLASSIFICATION: F2
 CONSTRUCTION TYPE: V-N
 ALLOWABLE AREA: UNLIMITED
 COVERED TRACK AREA: 760 SF



BLDG 5
 88
 25
 30
 Wheelshop







FREIGHT AND PASSENGER CAR SHOP BUILDING 28 - FLOOR PLAN

SCALE: 1" = 50'-0"

SAFETY SYMBOLS

- AED DEVICE
- EYE WASH STATION
- FIRE EXTINGUISHER
- FIRST AID KIT
- TELEPHONE

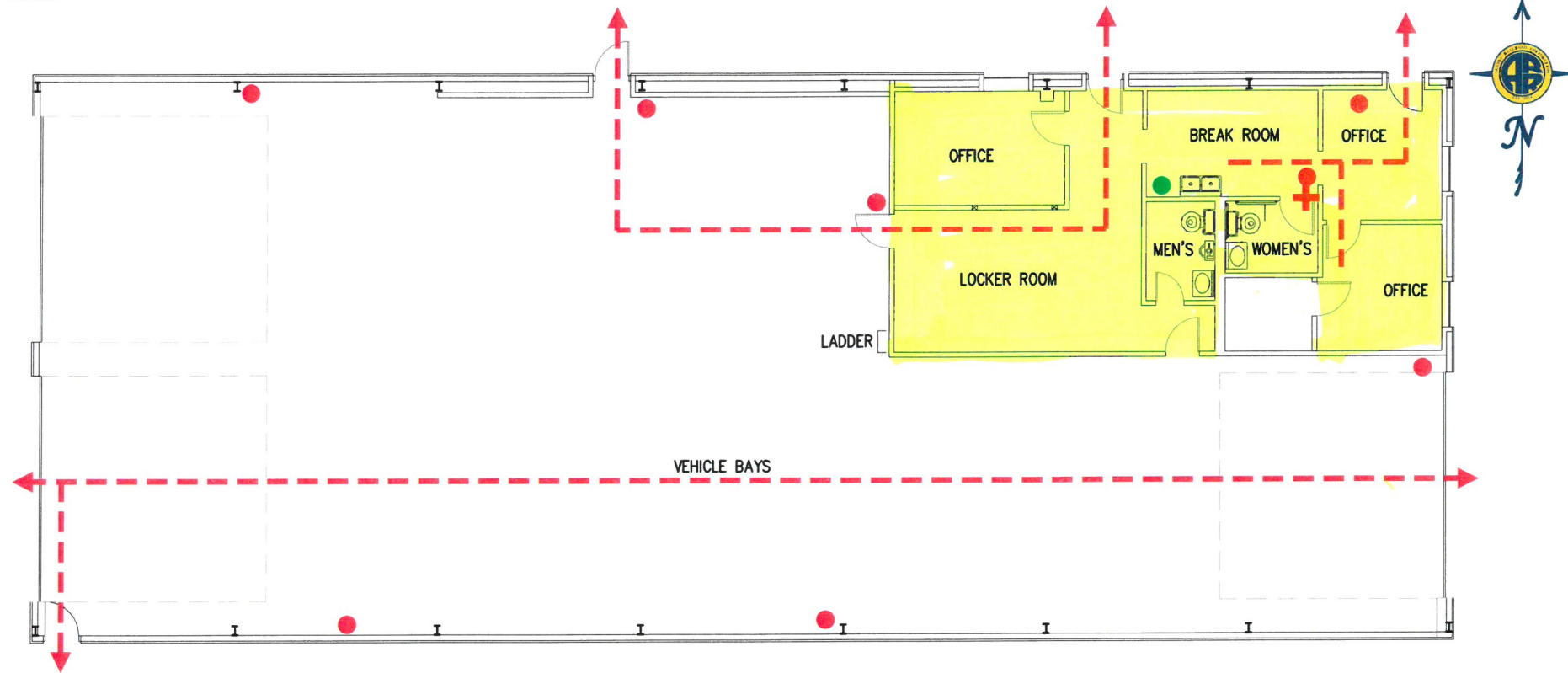
ALASKA RAILROAD CORPORATION
OFFICE OF THE CHIEF ENGINEER
 P.O. BOX 107500, ANCHORAGE, ALASKA 99510-7500 (907) 265-2456

PROJECT :
FREIGHT AND PASSENGER CAR SHOP
BLDG. 28 - ANCHORAGE YARD

TITLE:
FLOOR PLAN
SITE SAFETY MAP

DESIGNED BY: _____ SCALE : AS NOTED FILE: CAR-COACH SHOP.dwg
 DRAWN BY: PCL DWG NO. _____
 APPROVED BY: _____ DATE : FEBRUARY 2004 **1** OF **1**

REV.	DATE	BY	REVISION




OVERALL FLOOR PLAN

SCALE: NTS

- FIRE EXTINGUISHER ●
- AED ●
- EXIT ROUTE - - - - -
- FIRST AID KITS LOCATED IN RESTROOMS +
- NOT AN EXIT ⓧ

**This is your EMERGENCY EXIT ROUTE.
Please follow the route to the nearest safe
exit and gather to be accounted for.**

 ALASKA RAILROAD CORPORATION ENGINEERING SERVICES P.O. BOX 107500, ANCHORAGE, ALASKA 99510-7500		
PROJECT :		
ANCHORAGE RAIL YARD MP 114.3 - BUILDING 02		
TITLE:		
TOFC EMERGENCY EXIT PLAN		
DESIGNED BY: ARRC	SCALE : AS NOTED	AFE NO.:
DRAWN BY: rsm	DATE : 8/1/2012	ACAD FILE:
CHECKED BY: ARRC		DWG NO.
APPROVED BY: ARRC		_____ OF _____