

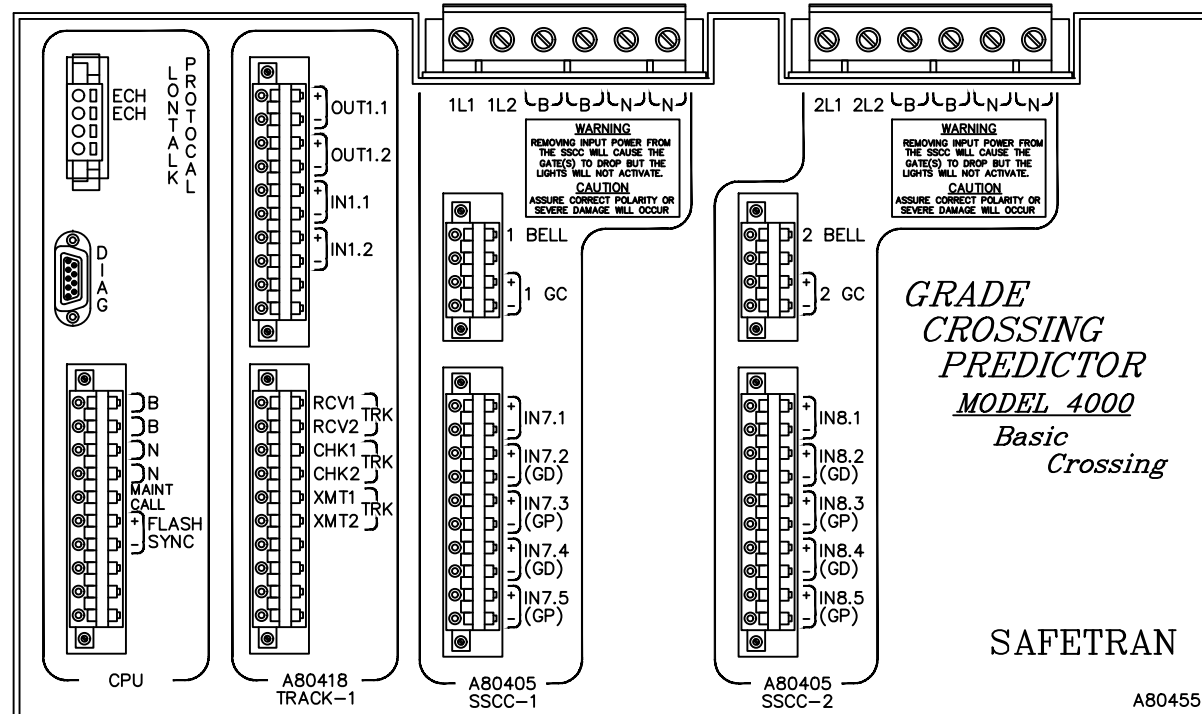
NOTES:

1. ALL WIRING IN THE BUNGALOW IS #16 AWG FLEX UNLESS OTHERWISE NOTED.
2. ALL CROSSING CONTROL EQUIPMENT IS DESIGNED TO PROVIDE A MINIMUM WARNING TIME OF 20 SECONDS AT THE MAXIMUM AUTHORIZED TRAIN SPEED FOR EACH MAIN TRACK APPROACH.
3. CROSSING APPROACHES WERE LENGTHENED 10 SECONDS TO COMPENSATE FOR ACCELERATING TRAINS AND BALLAST CHANGES.
4. CROSSING APPROACHES WERE LENGTHENED 2 SECONDS TO ALLOW FOR CLEARANCE TIME.
5. CROSSING APPROACHES WERE LENGTHENED 4 SECONDS FOR EQUIPMENT REACTION TIME.

LEGEND

- ① TRACK ARRESTER (SEE NOTE 2)
- ② EQUALIZER (SEE NOTE 2)
- ③ LINE ARRESTER (SEE NOTE 2)
- ⚠ NO 6 AWG THNN/THWN FLEX WIRE WITH RED SHEATH (B12)
- ⚠ NO 6 AWG THNN/THWN FLEX WIRE WITH BLACK SHEATH (N12)
- ⚠ NO 6 AWG THNN/THWN FLEX WIRE WITH GREEN SHEATH (SAFETY GROUND)
- Ⓜ TWISTED WIRE TWO TURNS PER FOOT

						The ALASKA RAILROAD CORPORATION SIGNAL ENGINEERING P.O. BOX 107500, ANCHORAGE, AK 99510-7500													
						OLD RICH HIGHWAY RAILROAD-HIGHWAY GRADE CROSSING WARNING SYSTEM DOT 910289D		FAIRBANKS, AK M.P. SN 01-1											
IN SERVICE DATE: 06-24-14 UPDATED FOR FIRMWARE UPGRADES COR: TAM		IN SERVICE DATE: 09-10-13 UPDATED ALL SIGNALS TO LED COR: SKJ		IN SERVICE DATE: 02-23-11 UPDATED COR: FWK		IN SERVICE DATE: 01-06-11 UPDATED COR: FWK		IN SERVICE DATE: 11-02-10 UPDATED COR: FWK		IN SERVICE DATE: 10-14-10 UPDATED COR: FWK		REVISIONS		DRAWN: AKRR DATE: 07-01-09		DWG NO. 910289D		1 SHEET OF 9	
						LAT: 64.744 LONG: -147.347													



Program Report

Location and SIN

DOT Number: 910289D
 Milepost Number: SN 1-1
 Site Name: OLD RICH HIGHWAY
 SIN: 762010028916

MCF and Template Selection

MCF Name: GCP-T6X-02-6.mcf
 MCF Revision: 26
 MCF CRC: 494D2656

Template = 1A16 Trk Bl (DCCN)

Check Numbers

Office Check Number: 2844C78E
 Config. Check Number: 1759760B
 (Based on MCF Revision 26)

Program

BASIC: module configuration
 Chassis Type = Basic Crossing (DCCN)
 Track 1/PSD 1 Slot = Track (DCCN)
 SSCC-1 Slot = SSCC3I (DCCN)
 SSCC-2 Slot = Not Used (DCCN)
 SEAR Used = No (DCCN)

BASIC: MS/GCP operation
 Track 1 : MS/GCP Operation = No (DCCN)

BASIC: island operation
 Track 1 : Island Used = Internal (DCCN)

BASIC: preemption
 Preempt Logic = No (DCCN)

BASIC: radio Dax links
 Radio DAX link A Used = No (DCCN)
 Radio DAX link B Used = No (DCCN)

BASIC: Vital Comms links
 Vital Comms link 1 Used = No (DCCN)
 Vital Comms link 2 Used = No (DCCN)

ISLAND: track 1
 Track 1 : Isl Frequency = 2.14 kHz (DCCN)
 Track 1 : Pickup Delay (2s +) = 0 sec (DCCN)
 Track 1 : Isl Enable IP Used = No (DCCN)

AND: track Anding
 AND 1 XR Used = Yes (DCCN)
 AND 2 Used = No (DCCN)
 AND 3 Used = No (DCCN)
 AND 4 Used = No (DCCN)
 AND 5 Used = No (DCCN)
 AND 6 Used = No (DCCN)
 AND 7 Used = No (DCCN)
 AND 8 Used = No (DCCN)

AND: AND 1 XR
 AND 1 XR Track 1 = Isl Only (DCCN)
 AND 1 Enable Used = No (DCCN)
 AND 1 Wrap Used = No (DCCN)

ADVANCED: MS restart
 MS/GCP Restart Used = No (DCCN)

ADVANCED: out of service
 OOS Control = Display (DCCN)
 OOS Timeout = No (DCCN)

ADVANCED: track wrap circuits
 Wrap LDS Timer = 5 sec (DCCN)
 Track 1 Wrap Used = No (DCCN)

ADVANCED: OR logic
 OR 1 Used = No (DCCN)
 OR 2 Used = No (DCCN)
 OR 3 Used = No (DCCN)
 OR 4 Used = No (DCCN)

ADVANCED: internal I/O 1
 Pass Thrus = No (DCCN)
 Int.1 Sets = Not Used (DCCN)
 Int.1 Set by = Not Used (DCCN)
 Int.2 Sets = Not Used (DCCN)
 Int.2 Set by = Not Used (DCCN)
 Int.3 Sets = Not Used (DCCN)
 Int.3 Set by = Not Used (DCCN)
 Int.4 Sets = Not Used (DCCN)
 Int.4 Set by = Not Used (DCCN)

ADVANCED: internal I/O 2
 Int.5 Sets = Not Used (DCCN)
 Int.5 Set by = Not Used (DCCN)
 Int.6 Sets = Not Used (DCCN)
 Int.6 Set by = Not Used (DCCN)
 Int.7 Sets = Not Used (DCCN)
 Int.7 Set by = Not Used (DCCN)
 Int.8 Sets = Not Used (DCCN)
 Int.8 Set by = Not Used (DCCN)

ADVANCED: internal I/O 3
 Int.9 Sets = Not Used (DCCN)
 Int.9 Set by = Not Used (DCCN)
 Int.10 Sets = Not Used (DCCN)
 Int.10 Set by = Not Used (DCCN)
 Int.11 Sets = Not Used (DCCN)
 Int.11 Set by = Not Used (DCCN)
 Int.12 Sets = Not Used (DCCN)
 Int.12 Set by = Not Used (DCCN)

ADVANCED: internal I/O 4
 Int.13 Sets = Not Used (DCCN)
 Int.13 Set by = Not Used (DCCN)
 Int.14 Sets = Not Used (DCCN)
 Int.14 Set by = Not Used (DCCN)
 Int.15 Sets = Not Used (DCCN)
 Int.15 Set by = Not Used (DCCN)
 Int.16 Sets = Not Used (DCCN)
 Int.16 Set by = Not Used (DCCN)

ADVANCED: site options
 Daylight Savings = Off (Field)
 Units = Standard (DCCN)
 Maint Call Rpt IP Used = No (DCCN)
 Emergency Activate IP = No (DCCN)
 EZ/EX Logging = Change (Field)
 EZ/EX Point Change = 3 (Field)

SSCC
 Gates Used = No (DCCN)
 Min Activation = 0 sec (DCCN)
 Rmt Activation Cancel = 2 min (DCCN)
 Bell On Gate Rising = No (DCCN)
 Mute Bell On Gate Down = No (DCCN)
 SSCCIV Controller Used = No (DCCN)

SSCC: 1
 SSCC-1 Activation = AND 1 XR (DCCN)
 SSCC 1 : Flash Rate = 55 (DCCN)
 SSCC 1 : Low Battery Detection = No (Field)
 SSCC 1 : Flash Sync = master (DCCN)
 SSCC 1 : Invert Gate Output = No (DCCN)
 SSCC 1 : Lamp Neutral Test = Off (DCCN)
 Aux-1 Xng Ctrl Used = No (DCCN)

OUTPUT: assignment page 1
 OUT 1.1 = Not Used (DCCN)
 OUT 1.2 = T1 Island (DCCN)

INPUT: assignment page 1
 IN 1.1 = Not Used (DCCN)
 IN 1.2 = Not Used (DCCN)

ID: assignment SSCC
 OUT GC 1 = Not Used (DCCN)
 IN 7.1 = Not Used (DCCN)
 IN 7.2 = Not Used (DCCN)
 IN 7.3 = Not Used (DCCN)
 IN 7.4 = Not Used (DCCN)
 IN 7.5 = Not Used (DCCN)

SITE: programming
 Radio Subnode = 1 (Field)
 Field Password = Off (DCCN)
 Low Battery Enabled = Off (Field)

Configuration Package File

Filename: MAINCONFIG-910289D-2016Jul12.pac
 Path: C:\Users\EdwardsG\Desktop\CROSSINGS\1-1SNX910289D_OLDRICHNPR\
 Date/Time: 7/12/2016 13:34:18
 DT Version: 5.5.1

IN SERVICE DATE: 08-23-16 UPDATED	IN SERVICE DATE: 04-03-15 UPDATED	IN SERVICE DATE: 06-24-14 UPDATED FOR FIRMWARE UPGRADES	IN SERVICE DATE: 09-10-13 UPDATED FOR ALL SIGNALS TO LED	IN SERVICE DATE: 02-23-11 UPDATED	IN SERVICE DATE: 11-02-10 UPDATED
COR: GSE	COR: JAK	COR: TAM	COR: SKJ	COR: FWK	COR: FWK
CHK:	CHK:	CHK:	CHK:	CHK:	CHK:

LAT: 64.744
 LONG: -147.347

GRADE CROSSING PREDICTOR MODEL 4000 Basic Crossing

SAFETRAN

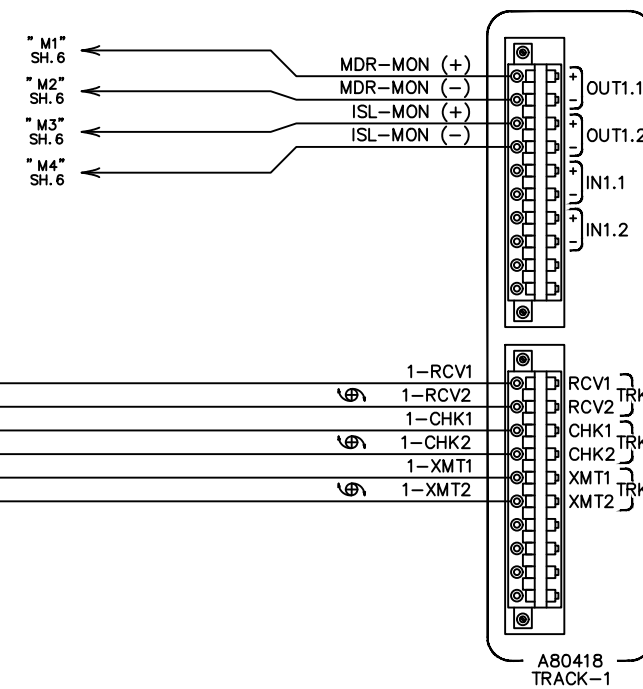
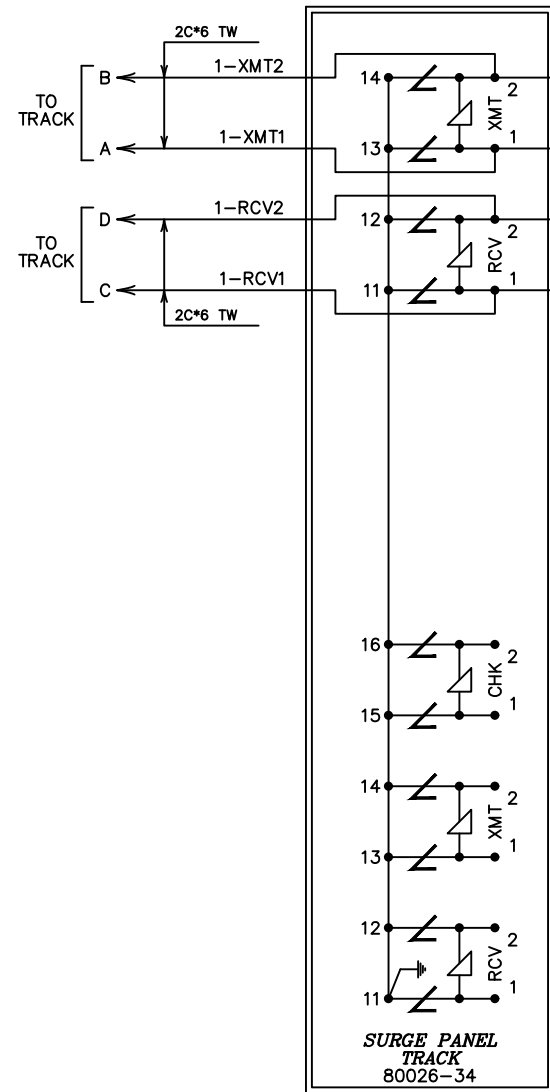
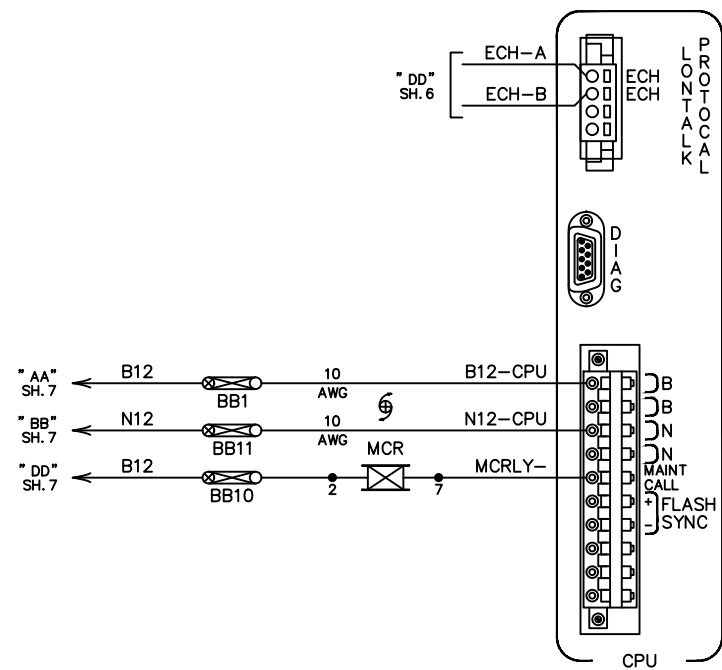
NOTES:

- THE MINIMUM PROGRAM STEPS REPORT IS GENERATED BY USING SAFETRAN'S DIAGNOSTIC TERMINAL SOFTWARE SUITE AND IS NOT A COMPLETE PROGRAM LIST FOR THE SETUP AND/OR CUTOVER OF ANY GCP 4000 UNIT. IT IS MISSING THE CALIBRATION SEQUENCE FOR THE TRACK CIRCUITS AND SIGNALS CONNECTED TO THE UNIT IN THE FIELD APPLICATION. THE CUSTOMER SHOULD REFER TO THE GCP 4000 REFERENCE MANUAL SECTION 6 FOR THE PROPER CALIBRATION OF ALL TRACK CIRCUITS AND SIGNALS CONNECTED TO THE UNIT. THE ALASKA RAILROAD CORPORATION SHALL BE RESPONSIBLE FOR SITE SPECIFIC SETTINGS AND PROGRAMMING TO MEET THE LOCATION REQUIREMENTS FOR TESTING AND CUTOVER OF ANY SPECIFIC CROSSING.
- FOR ISLAND DISTANCE MEASURE THE DISTANCE BETWEEN THE TRANSMITTER AND RECEIVER LEADS
- SET TRANSFER JUMPER TO STG. SET TRANSFER SWITCH TO AUTO. SET TRANSFER TIME FOR 4 MIN.

ON MODULE A80468
 S3

The ALASKA RAILROAD CORPORATION	
SIGNAL ENGINEERING	P.O. BOX 107500, ANCHORAGE, AK 99510-7500
OLD RICH HIGHWAY RAILROAD-HIGHWAY GRADE CROSSING WARNING SYSTEM DOT 910289D	FAIRBANKS, AK M.P. SN 01-1
DRAWN: AKRR DATE: 07-01-09	DWG NO. 910289D
REVISIONS	2 SHEET OF 9

IN SERVICE DATE: 08-23-16 UPDATED	IN SERVICE DATE: 04-03-15 UPDATED	IN SERVICE DATE: 06-24-14 UPDATED FOR FIRMWARE UPGRADES	IN SERVICE DATE: 09-10-13 UPDATED FOR ALL SIGNALS TO LED	IN SERVICE DATE: 02-23-11 UPDATED	IN SERVICE DATE: 11-02-10 UPDATED
COR: TRS	COR: JAK	COR: TAM	COR: SKJ	COR: FWK	COR: FWK
CHK:	CHK:	CHK:	CHK:	CHK:	CHK:

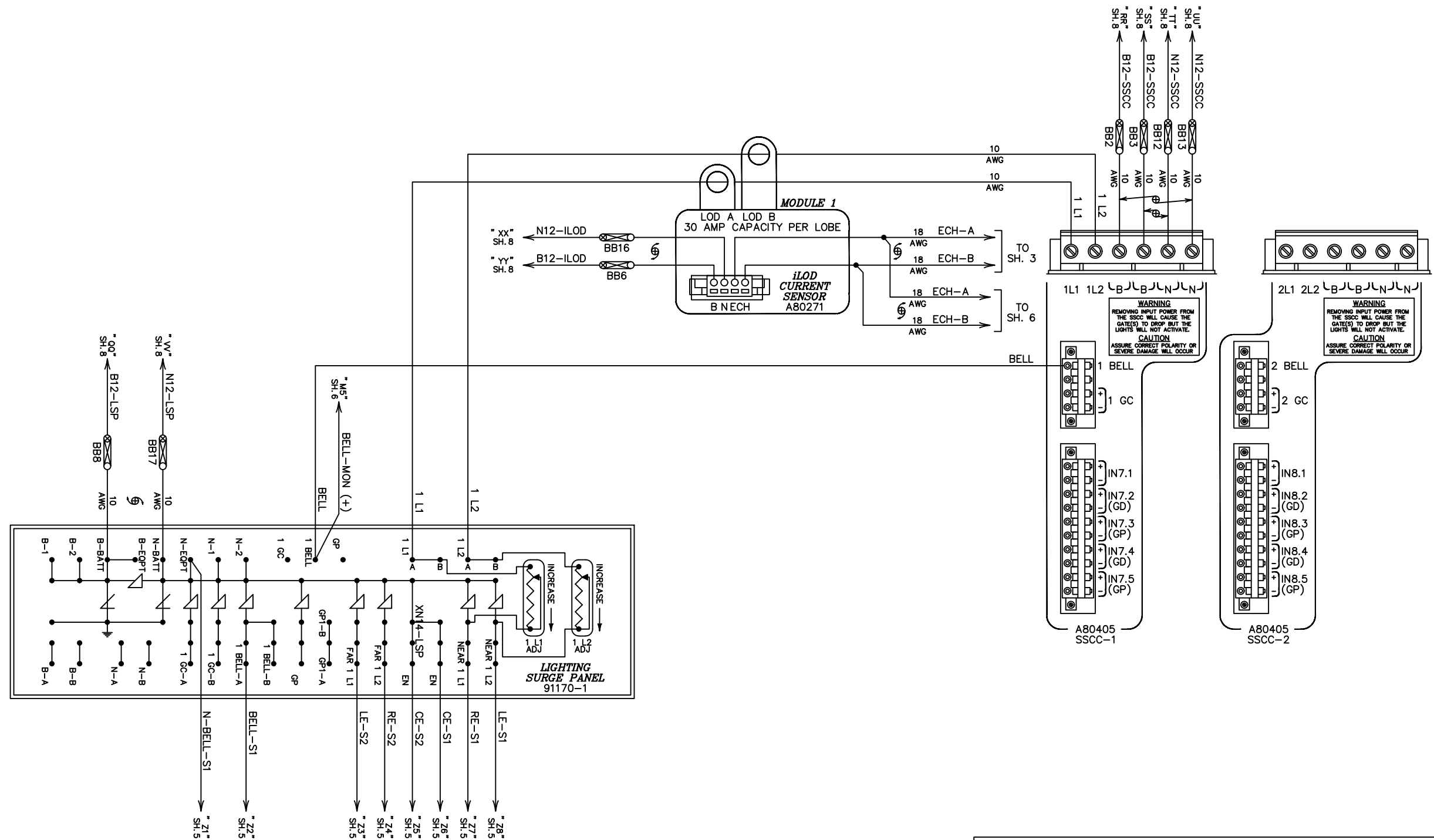


* WHEN USING A 6-WIRE HOOKUP, THE RESPECTIVE
 CHK AND XMT WIRES MUST BE CONNECTED TOGETHER
 10 TO 12 FEET FROM RAIL CONNECTIONS 18"
 UNDERGROUND AND A SINGLE BONDSTRAND RUN FROM
 THE CONNECTION TO THE RAIL.

IN SERVICE DATE: 09-12-16 UPDATED	IN SERVICE DATE: 08-23-16 UPDATED	IN SERVICE DATE: 04-03-15 UPDATED	IN SERVICE DATE: 06-24-14 UPDATED FOR FIRMWARE UPGRADES	IN SERVICE DATE: 09-10-13 UPDATED ALL SIGNALS TO LED	IN SERVICE DATE: 11-02-10 UPDATED
COR: GSE	CHK: TRS	COR: JAK	CHK: TAM	COR: SKJ	CHK: FWK

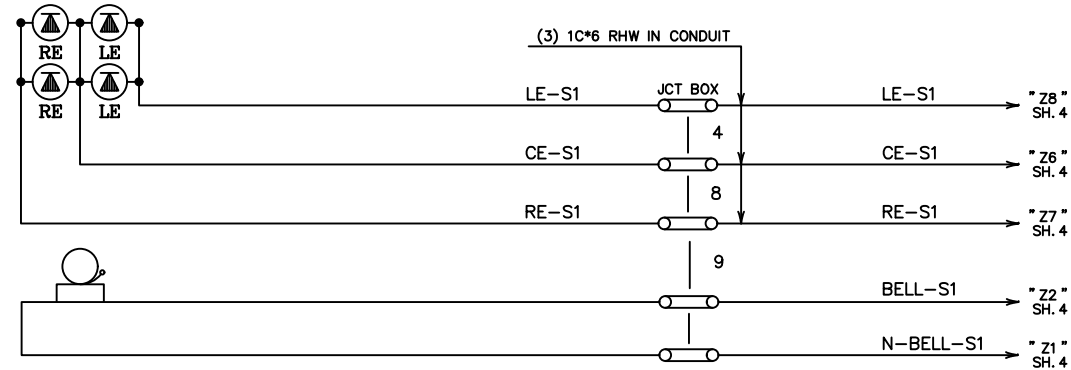
REVISIONS

The ALASKA RAILROAD CORPORATION SIGNAL ENGINEERING P.O. BOX 107500, ANCHORAGE, AK 99510-7500	
LAT: 64.744 LONG: -147.347	OLD RICH HIGHWAY RAILROAD-HIGHWAY GRADE CROSSING WARNING SYSTEM DOT 910289D FAIRBANKS, AK M.P. SN 01-1
DRAWN: AKRR DATE: 07-01-09	DWG NO. 910289D
3 SHEET OF 9	

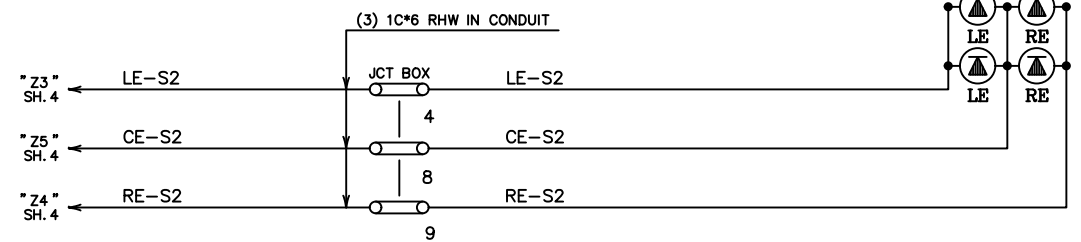


The ALASKA RAILROAD CORPORATION SIGNAL ENGINEERING P.O. BOX 107500, ANCHORAGE, AK 99510-7500						OLD RICH HIGHWAY FAIRBANKS, AK RAILROAD-HIGHWAY GRADE CROSSING WARNING SYSTEM DOT 910289D M.P. SN 01-1			
IN SERVICE DATE: 08-23-16 UPDATED	IN SERVICE DATE: 04-03-15 UPDATED	IN SERVICE DATE: 06-24-14 UPDATED FOR FIRMWARE UPGRADES	IN SERVICE DATE: 09-10-13 UPDATED ALL SIGNALS TO LED	IN SERVICE DATE: 12-03-10 UPDATED	IN SERVICE DATE: 10-14-10 UPDATED	REVISIONS	DRAWN: AKRR DATE: 07-01-09	DWG NO. 910289D	4 SHEET OF 9
COR: TRS	COR: JAK	COR: TAM	COR: SKJ	COR: FWK	COR: FWK		LAT: 64.744 LONG: -147.347	DATE: 07-01-09	NO. 910289D

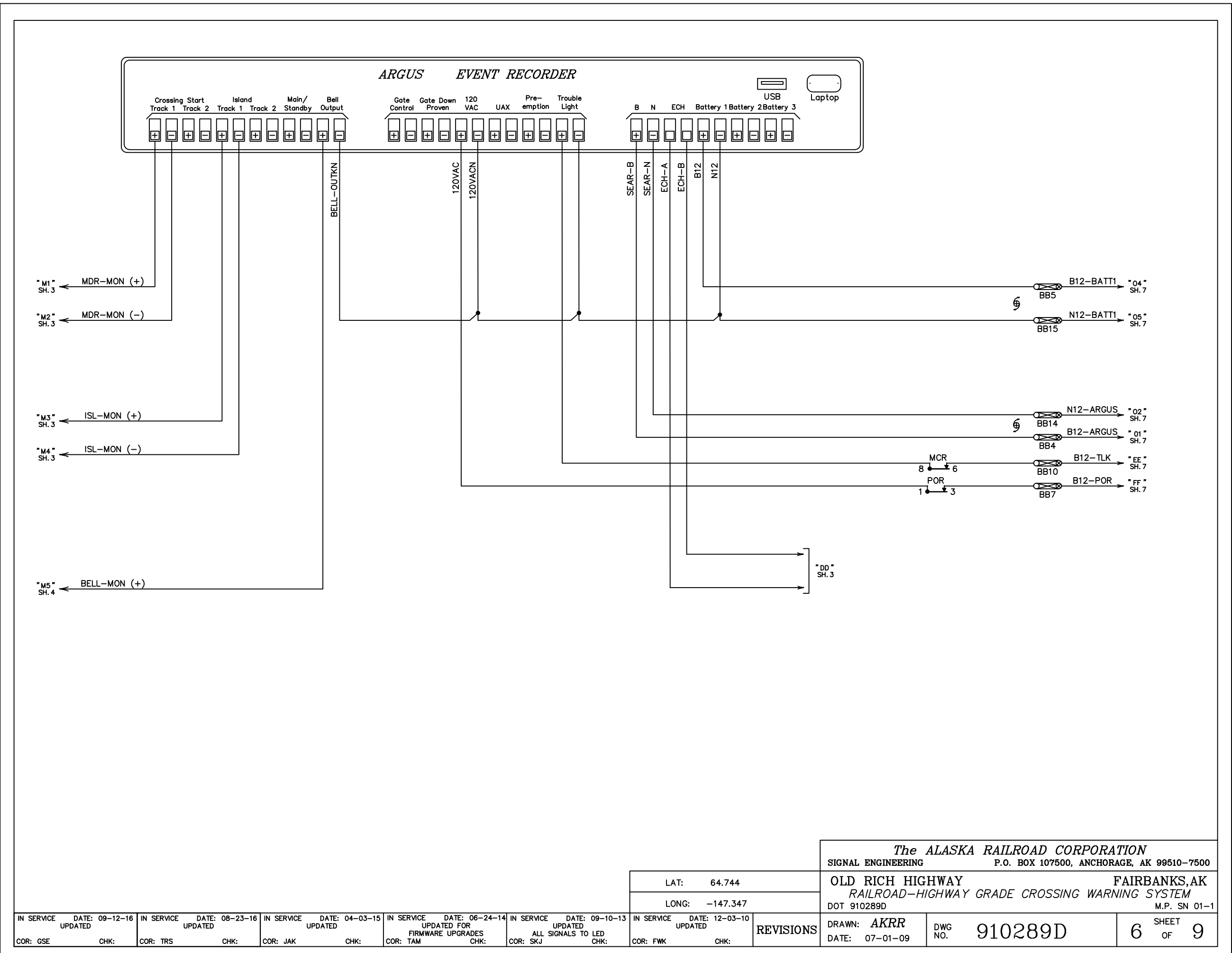
SIGNAL 1



SIGNAL 2



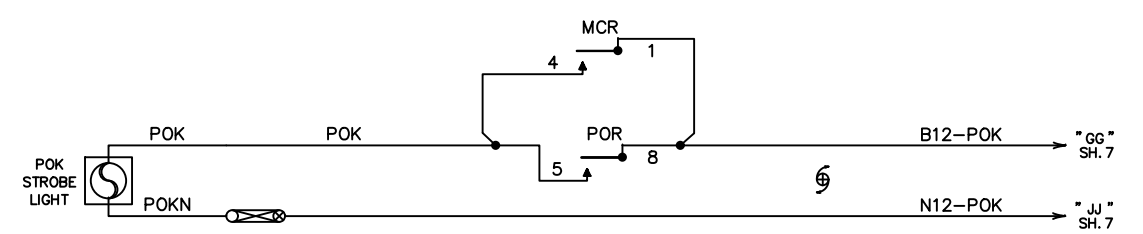
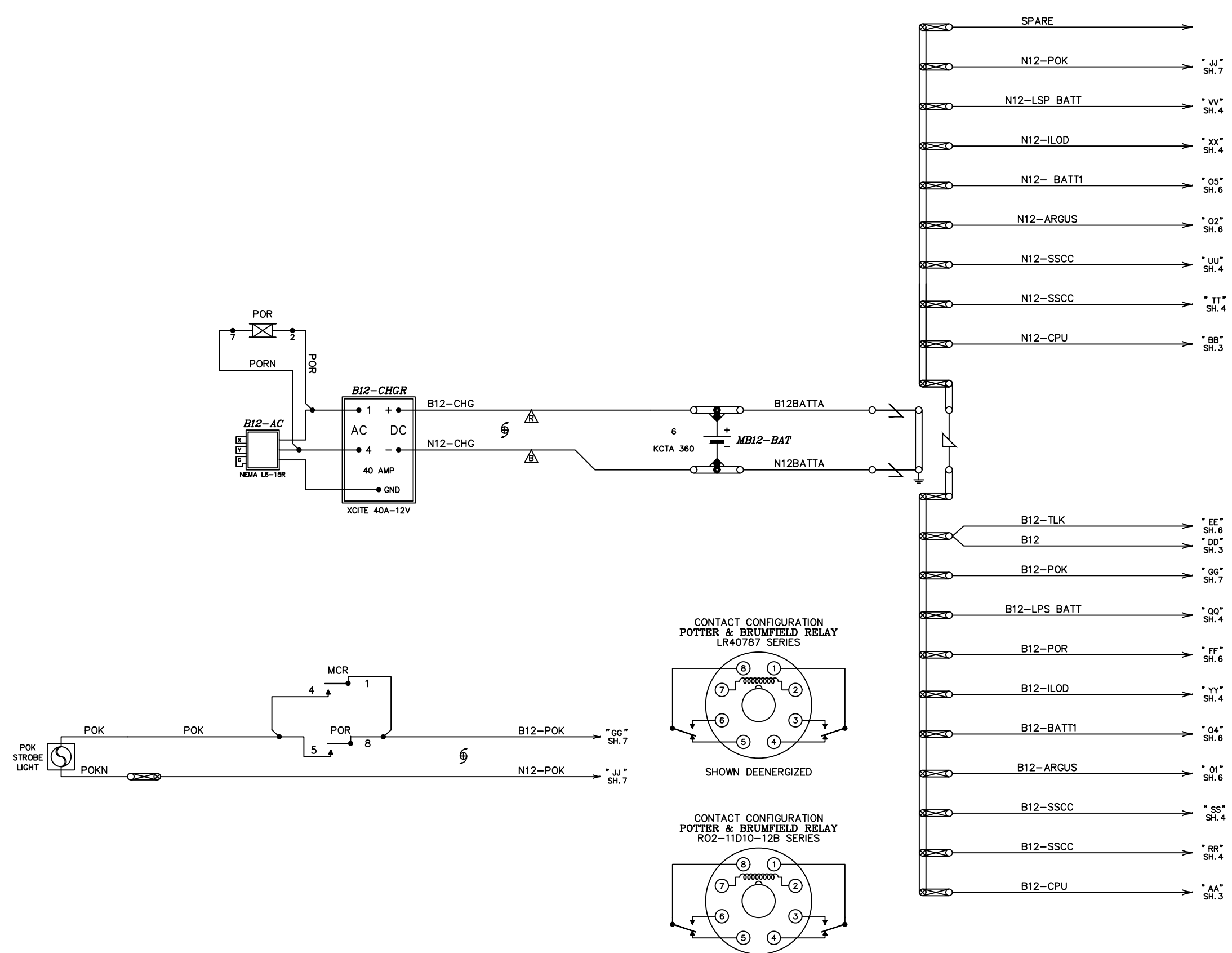
IN SERVICE DATE: 08-23-16 UPDATED						IN SERVICE DATE: 04-03-15 UPDATED		IN SERVICE DATE: 06-24-14 UPDATED FOR FIRMWARE UPGRADES		IN SERVICE DATE: 09-10-13 UPDATED ALL SIGNALS TO LED		IN SERVICE DATE: 02-23-11 UPDATED		IN SERVICE DATE: 12-02-10 UPDATED		<p align="center"><i>The ALASKA RAILROAD CORPORATION</i> SIGNAL ENGINEERING P.O. BOX 107500, ANCHORAGE, AK 99510-7500</p> <p align="center">OLD RICH HIGHWAY FAIRBANKS, AK RAILROAD-HIGHWAY GRADE CROSSING WARNING SYSTEM DOT 910289D M.P. SN 01-1</p>				
COR: TRS		CHK:		COR: JAK		CHK:		COR: TAM		CHK:		COR: SKJ		COR: FWK		CHK:		REVISIONS DRAWN: AKRR DATE: 07-01-09	DWG NO. 910289D	5 SHEET OF 9
				LAT: 64.744				LONG: -147.347												



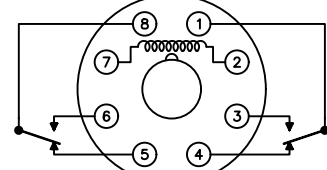
IN SERVICE DATE: 09-12-16 UPDATED						IN SERVICE DATE: 08-23-16 UPDATED						IN SERVICE DATE: 04-03-15 UPDATED						IN SERVICE DATE: 06-24-14 UPDATED FOR FIRMWARE UPGRADES						IN SERVICE DATE: 09-10-13 UPDATED ALL SIGNALS TO LED						IN SERVICE DATE: 12-03-10 UPDATED						REVISIONS						DRAWN: AKRR DATE: 07-01-09						DWG NO. 910289D						6 SHEET OF 9					
COR: GSE CHK:						COR: TRS CHK:						COR: JAK CHK:						COR: TAM CHK:						COR: SKJ CHK:						COR: FWK CHK:						DATE: 07-01-09						910289D						6 OF 9											

The ALASKA RAILROAD CORPORATION
 SIGNAL ENGINEERING P.O. BOX 107500, ANCHORAGE, AK 99510-7500
OLD RICH HIGHWAY FAIRBANKS, AK
 RAILROAD-HIGHWAY GRADE CROSSING WARNING SYSTEM
 DOT 910289D M.P. SN 01-1

LAT: 64.744
 LONG: -147.347

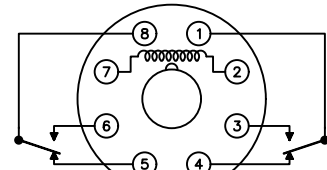


CONTACT CONFIGURATION
POTTER & BRUMFIELD RELAY
LR40787 SERIES



SHOWN DEENERGIZED

CONTACT CONFIGURATION
POTTER & BRUMFIELD RELAY
R02-11D10-12B SERIES



SHOWN DEENERGIZED

IN SERVICE DATE: 06-24-14 UPDATED FOR FIRMWARE UPGRADES COR: TAM	IN SERVICE DATE: 09-10-13 UPDATED ALL SIGNALS TO LED COR: SKJ	IN SERVICE DATE: 01-20-11 UPDATED COR: FWK	IN SERVICE DATE: 01-06-11 UPDATED COR: FWK	IN SERVICE DATE: 12-03-10 UPDATED COR: FWK	IN SERVICE DATE: 10-14-10 UPDATED COR: FWK
IN SERVICE DATE: 09-12-16 UPDATED COR: GSE	IN SERVICE DATE: 08-23-16 UPDATED COR: TRS	IN SERVICE DATE: 04-03-15 UPDATED COR: JAK			

LAT: 64.744
LONG: -147.347

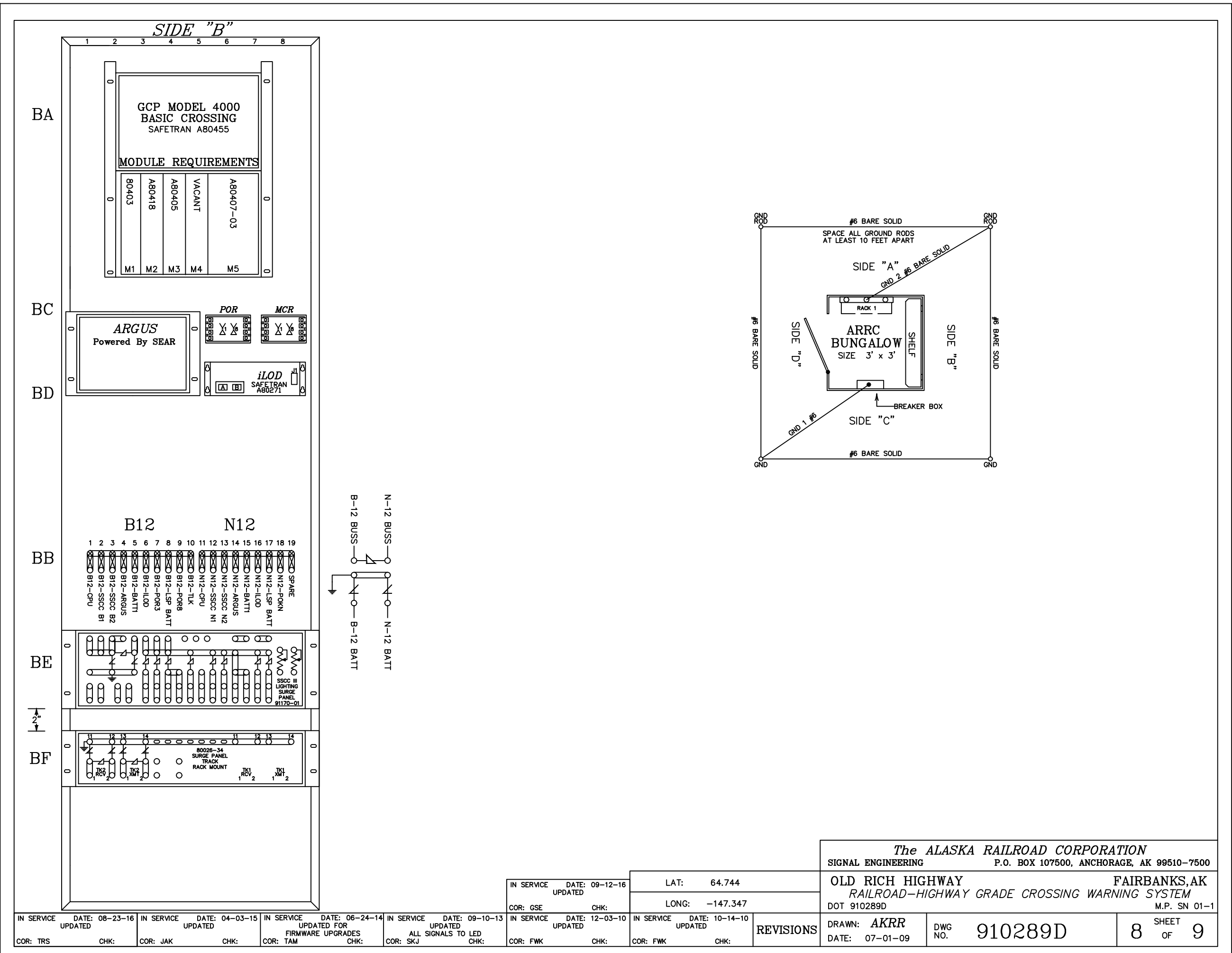
REVISIONS

The ALASKA RAILROAD CORPORATION
SIGNAL ENGINEERING P.O. BOX 107500, ANCHORAGE, AK 99510-7500

OLD RICH HIGHWAY RAILROAD-HIGHWAY GRADE CROSSING WARNING SYSTEM
DOT 910289D FAIRBANKS, AK M.P. SN 01-1

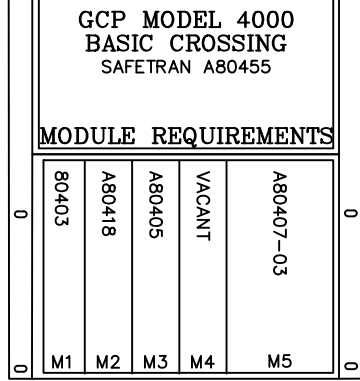
DRAWN: AKRR DATE: 07-01-09
DWG NO. 910289D

7 SHEET OF 9

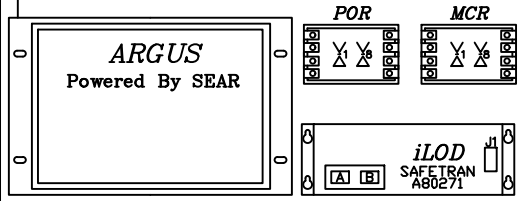


SIDE "B"

BA

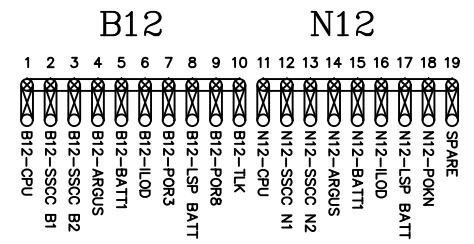


BC

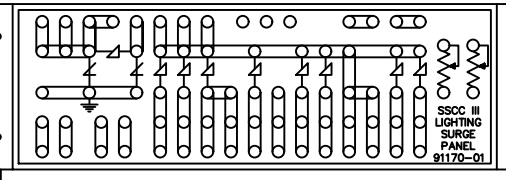


BD

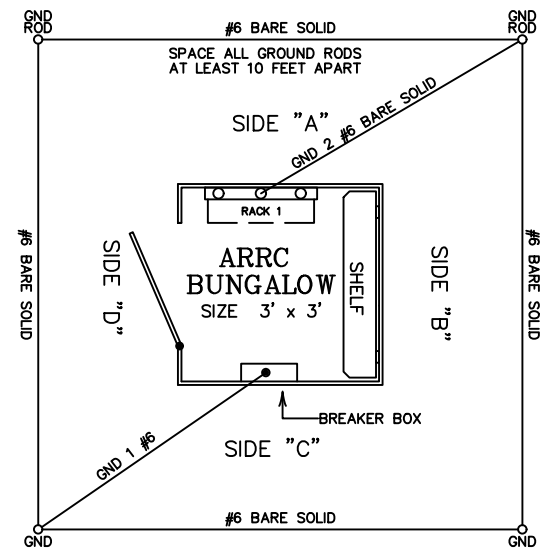
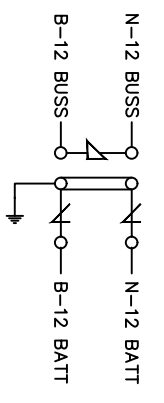
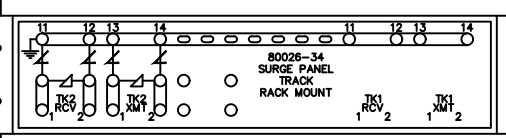
BB



BE



BF



IN SERVICE DATE: 08-23-16 UPDATED	IN SERVICE DATE: 04-03-15 UPDATED	IN SERVICE DATE: 06-24-14 UPDATED FOR FIRMWARE UPGRADES	IN SERVICE DATE: 09-10-13 UPDATED ALL SIGNALS TO LED	IN SERVICE DATE: 12-03-10 UPDATED	IN SERVICE DATE: 10-14-10 UPDATED
COR: TRS	COR: JAK	COR: TAM	COR: SKJ	COR: FWK	COR: FWK
CHK:	CHK:	CHK:	CHK:	CHK:	CHK:

The ALASKA RAILROAD CORPORATION
SIGNAL ENGINEERING P.O. BOX 107500, ANCHORAGE, AK 99510-7500

OLD RICH HIGHWAY FAIRBANKS, AK
RAILROAD-HIGHWAY GRADE CROSSING WARNING SYSTEM
DOT 910289D M.P. SN 01-1

IN SERVICE DATE: 09-12-16
UPDATED

LAT: 64.744

COR: GSE

LONG: -147.347

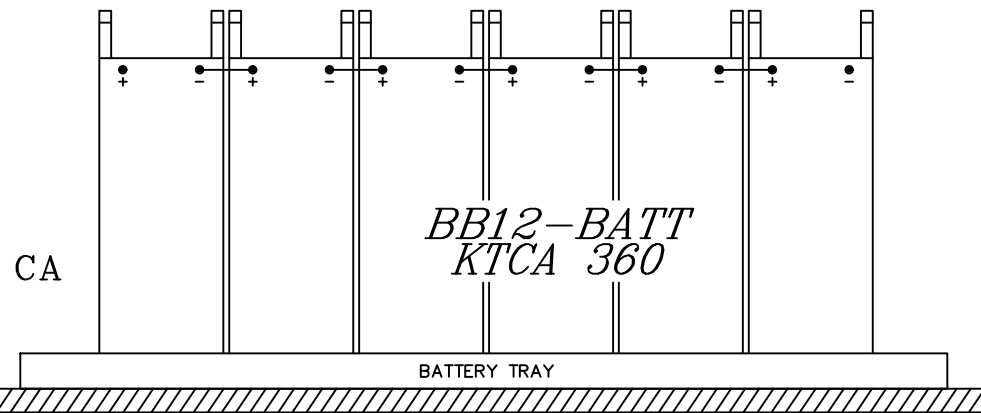
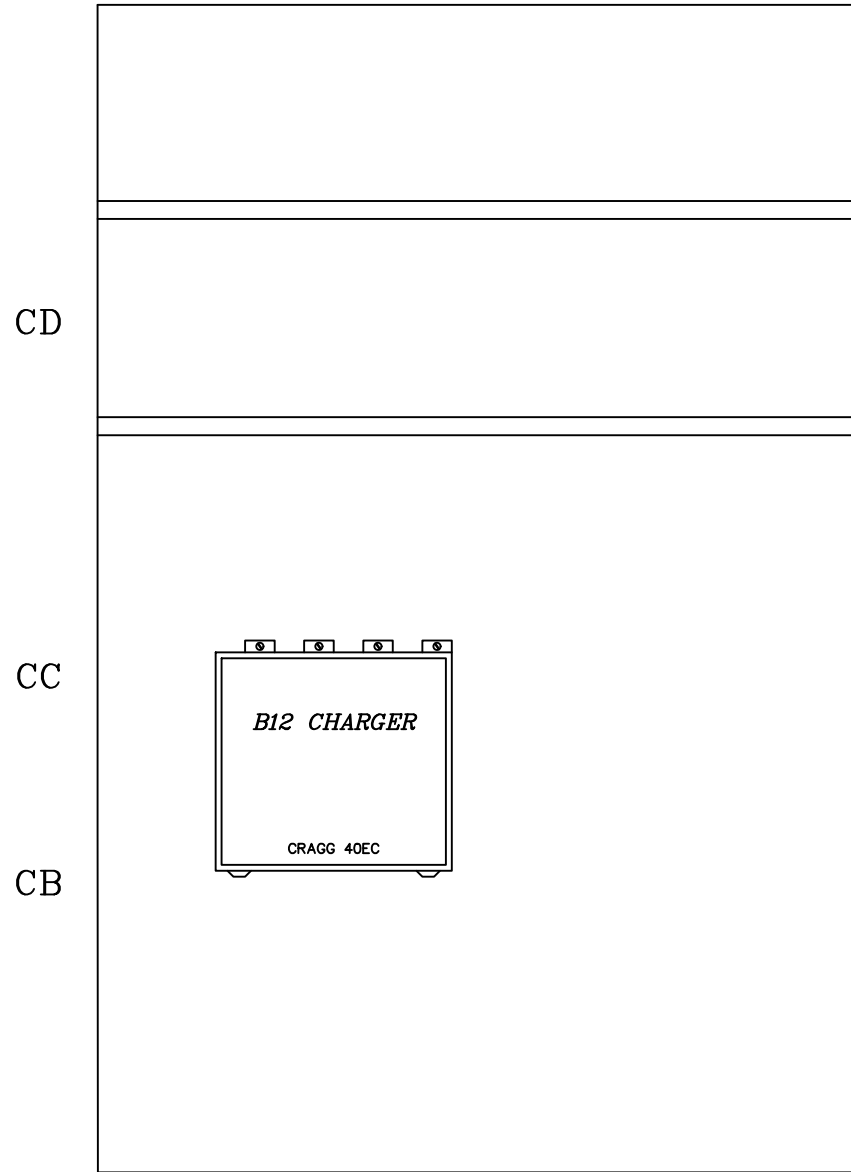
REVISIONS

DRAWN: AKRR
DATE: 07-01-09

DWG NO. 910289D

8 SHEET OF 9

SIDE "C"



IN SERVICE	DATE: 09-12-16
UPDATED	
COR: GSE	CHK:

IN SERVICE	DATE: 04-03-15
UPDATED	
COR: JAK	CHK:

IN SERVICE	DATE: 06-24-14
UPDATED FOR	
COR: TAM	CHK:

IN SERVICE	DATE: 09-10-13
UPDATED	
COR: SKJ	CHK:

IN SERVICE	DATE: 02-23-11
UPDATED	
COR: FWK	CHK:

LAT:	64.744
LONG:	-147.347

REVISIONS

<i>The ALASKA RAILROAD CORPORATION</i>	
SIGNAL ENGINEERING	P.O. BOX 107500, ANCHORAGE, AK 99510-7500
OLD RICH HIGHWAY	FAIRBANKS, AK
RAILROAD-HIGHWAY GRADE CROSSING WARNING SYSTEM	
DOT 910289D	M.P. SN 01-1
DRAWN: AKRR	DWG NO. 910289D
DATE: 07-01-09	