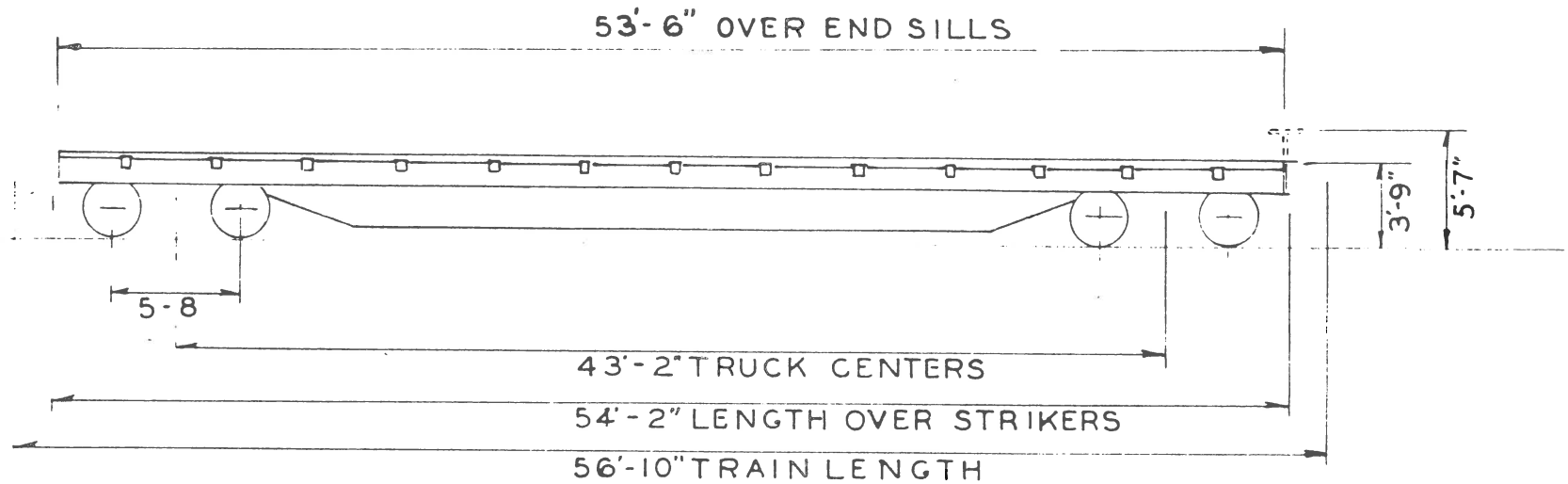


2900-12999 FLAT CAR

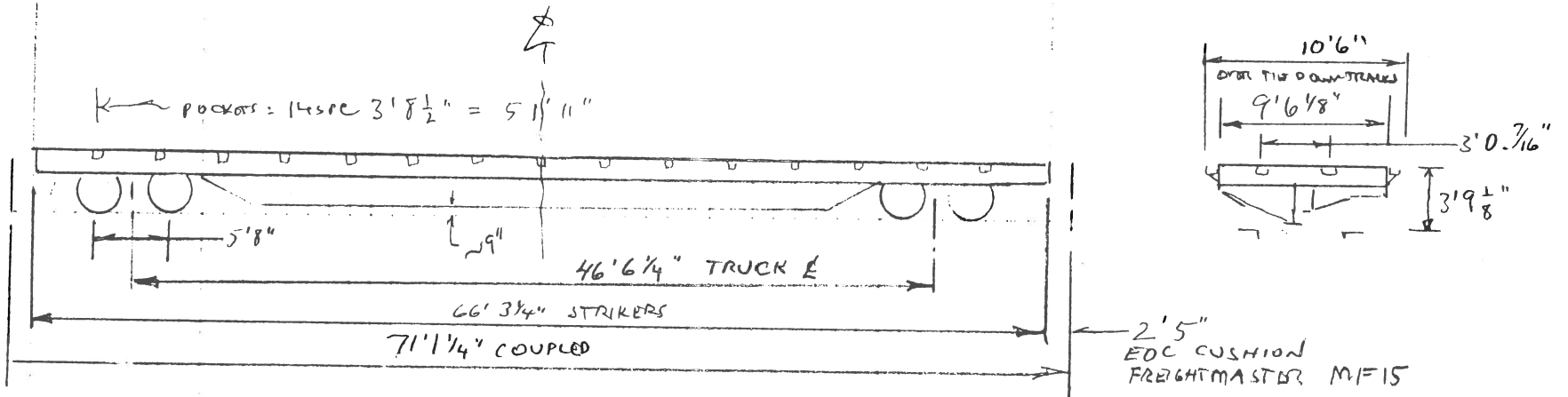


BUILT BY	SOUTHERN IRON & EQUIPMENT CO.
DATE BUILT	1976
PURCHASED FROM	S.I. & E.CO.
PLACED IN SERVICE	1976
WHEELS	33"
TRUCKS	
AXLES	6'X11"
BEARINGS	BRENCO
LIGHTWEIGHT - LBS.	53,000
CAPACITY-LBS.	154,000
COUPLERS	NATIONAL
YOKES	NATIONAL
AIRBRAKES	
HANDBRAKES	

GENERAL DIMENSIONS:	
TRAIN LENGTH	56'-10"
MAX. HEIGHT	5'-7"
WIDTH OVER SIDE SILLS	9'-4"
MAX. WIDTH	10'-6"
RAIL TO FLOOR	3'-9"

CKD 2-83 RCK

ALASKA RR



COUPLED ψ EDC'S LOCKED OUT \approx 68' 5 1/4" BPF

LT WT 78,500

15 CARS

b/t 3/83

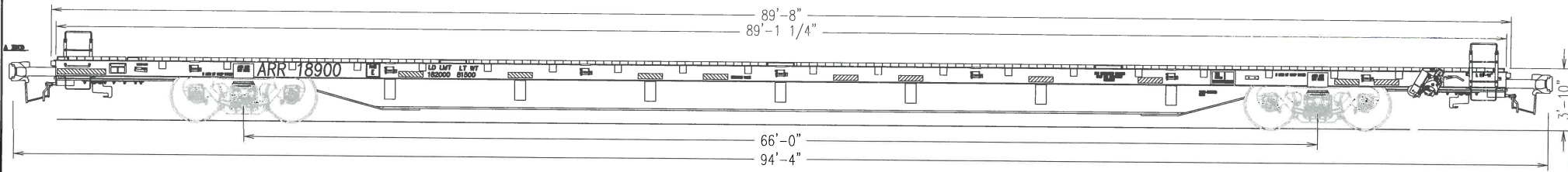
LD LMT 184,500

CG 10,000 @ 18" = } \rightarrow 31.96 \approx 32" ATK
 68,500 @ 34" = }

LENGTH OVER END SILLS 65' 0 1/2"

WIDTH B/W STAKE ROCKERS 9' 4"


17000 FLATS
 J/C 2/20/91



BUILT BY: TRINITY INDUSTRIES, INC.
 DATE BUILT: 2001
 PURCHASED FROM: TRINITY INDUSTRIES, INC.
 PLACED IN SERVICE: 2001
 WHEELS: CB-38, CLASS C
 TRUCKS:
 AXLES: ARR 1 X 12, GRADE F
 BEARINGS: AAR 1 X 12 NFL
 UNDERFRAME:
 LIGHTWEIGHT - LBS. 81,500
 CAPACITY - LBS. 182,000
 COUPLERS: SBE67DE
 YOKES:
 AIRBRAKES:
 HANDBRAKE: AAR GROUP 0

GENERAL DIMENSIONS:
 TRAIN LENGTH: 94'-4"
 EXTREME HEIGHT: 5'-4³/₁₆"
 EXTREME WIDTH : 9'-11"
 TRUCK AXLE SPACING: 5'-10"

DRAFT

 ALASKA RAILROAD CORPORATION ENGINEERING SERVICES P.O. BOX 107500, ANCHORAGE, ALASKA 99510-7500		
PROJECT :		
ARR 18900 - 18925 GENERAL ARRANGEMENT FLAT CARS		
TITLE:		
ROLLING STOCK REPORT		
DESIGNED BY: CDR	SCALE : NTS	AFE NO.: NONE
DRAWN BY: CDR		ACAD FILE: ARR18900
CHECKED BY: CDR	DATE : 5-31-07	DWG NO.
APPROVED BY: CDR		1 OF 1