
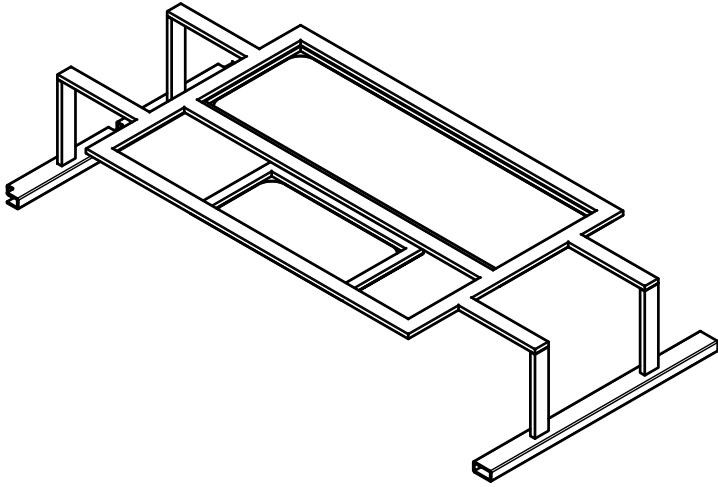
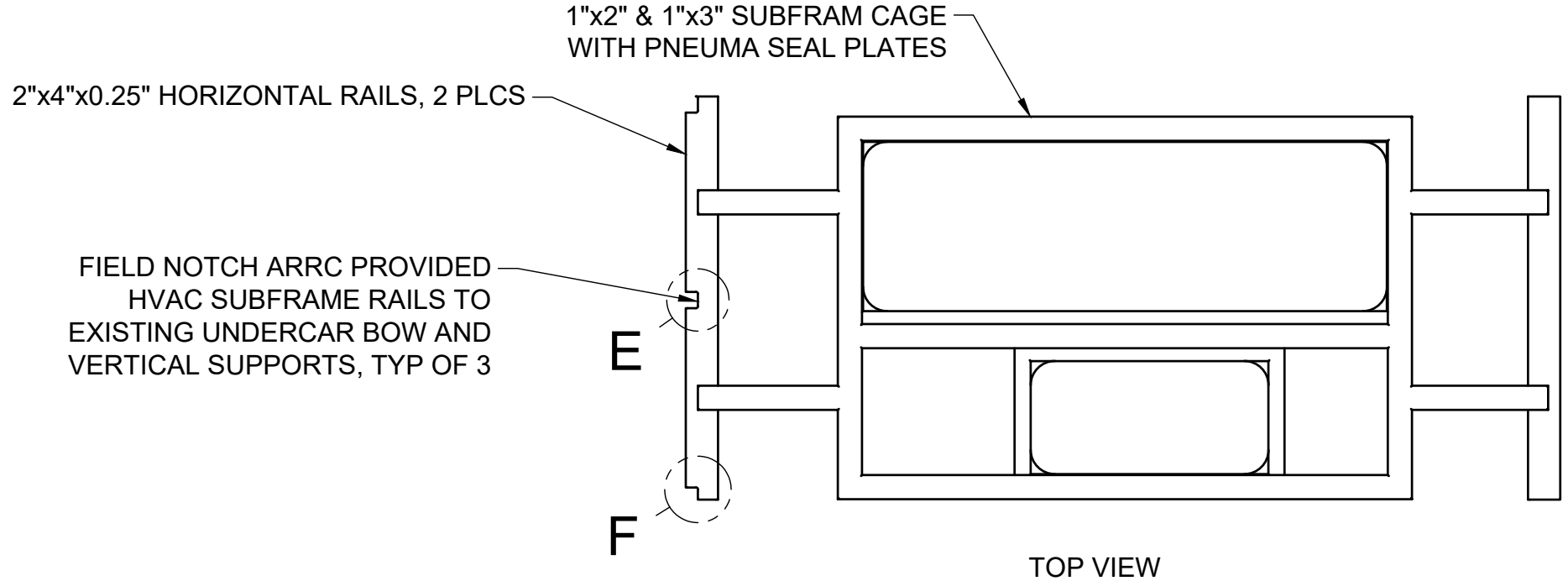
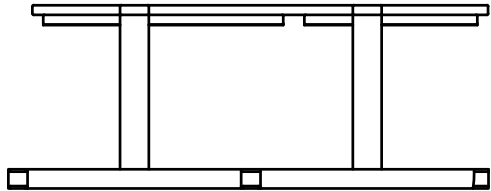


<div></div> <div>ALASKA RAILROAD CORPORATION ENGINEERING SERVICES</div>	PROJECT MOTIVE POWER AND EQUIPMENT PASSENGER COACHES		
	TITLE ARR 551-554 UNDER CAR HVAC SUPPORT GENERAL ARRANGEMENT		
	APPROVED ARRC	SCALE 1:20	SHEET 1/3
	CHECKED ARRC		
	DRAWN CDL	DATE 8/22/2025	



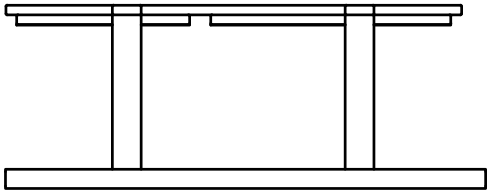
TOP VIEW



LEFT VIEW

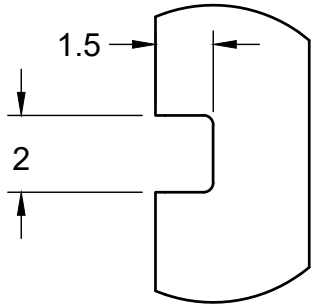


FRONT VIEW

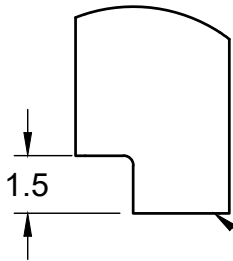


RIGHT VIEW

- NOTES:
- CONTRACTOR TO VERIFY FIT AND PLACEMENT OF ARRC PROVIDED HVAC SUBFRAME PRIOR TO FINAL INSTALLATION.



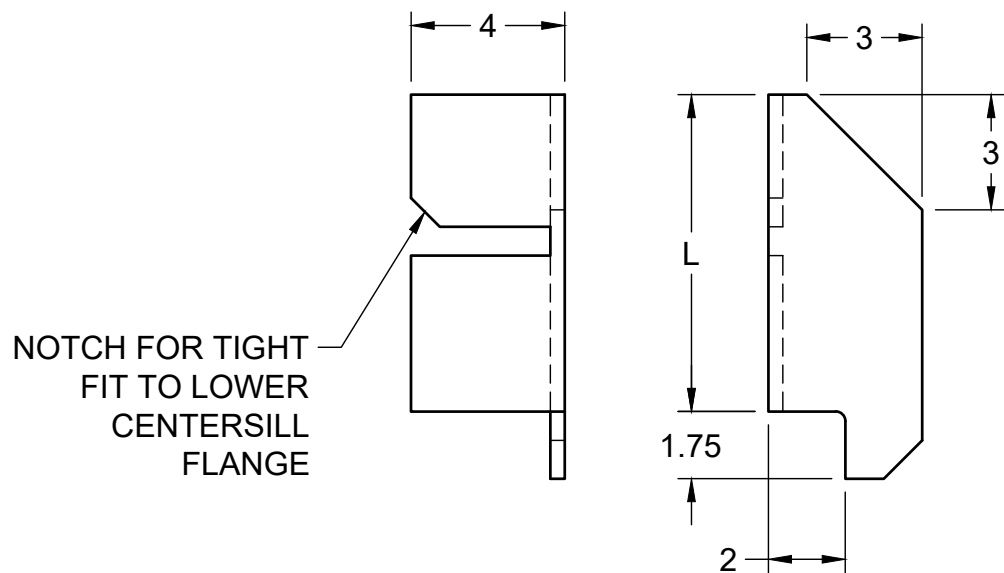
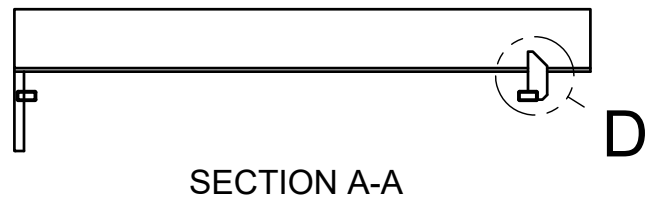
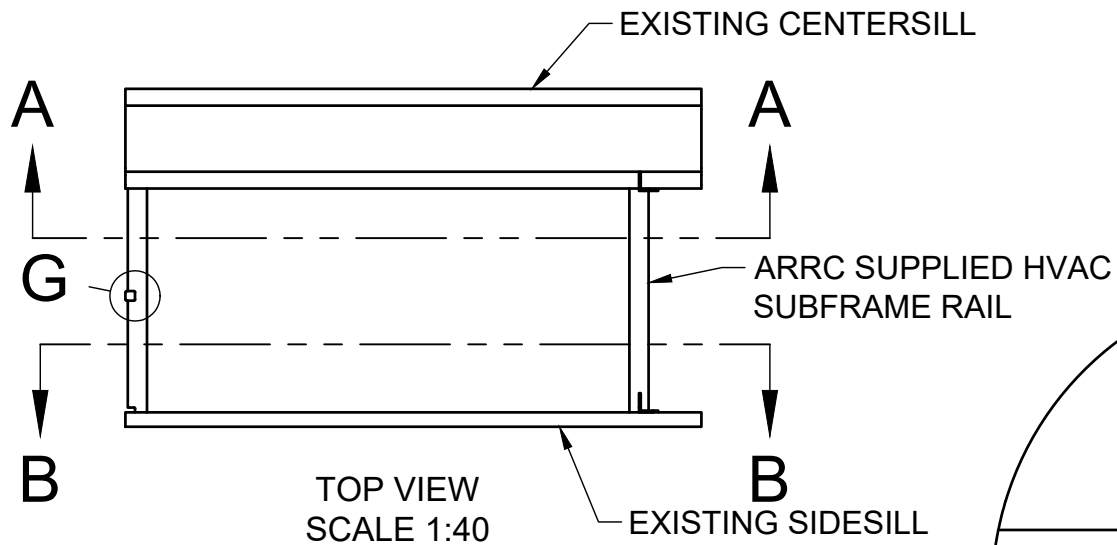
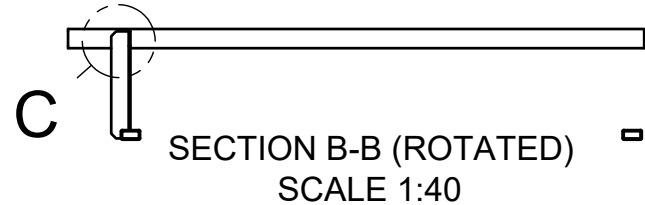
DETAIL E
SCALE 1:5



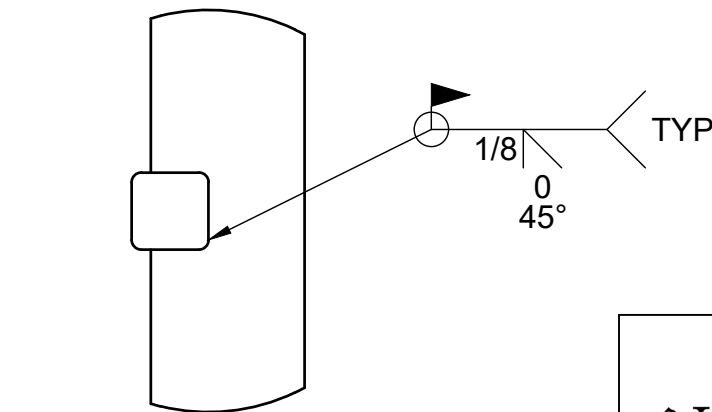
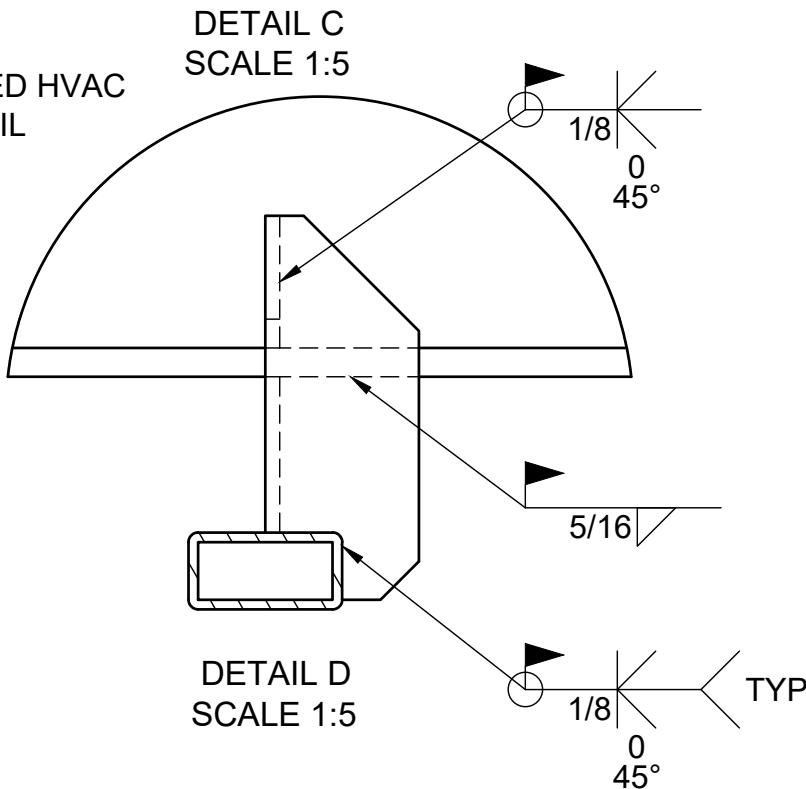
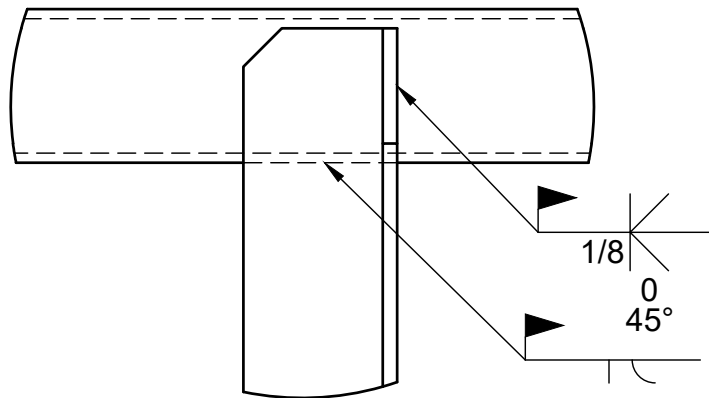
DETAIL F
SCALE 1:5

TRIM FRONT EDGE OF
TUBING 0.5" BACK FROM
FRONT OF EXISTING BOW

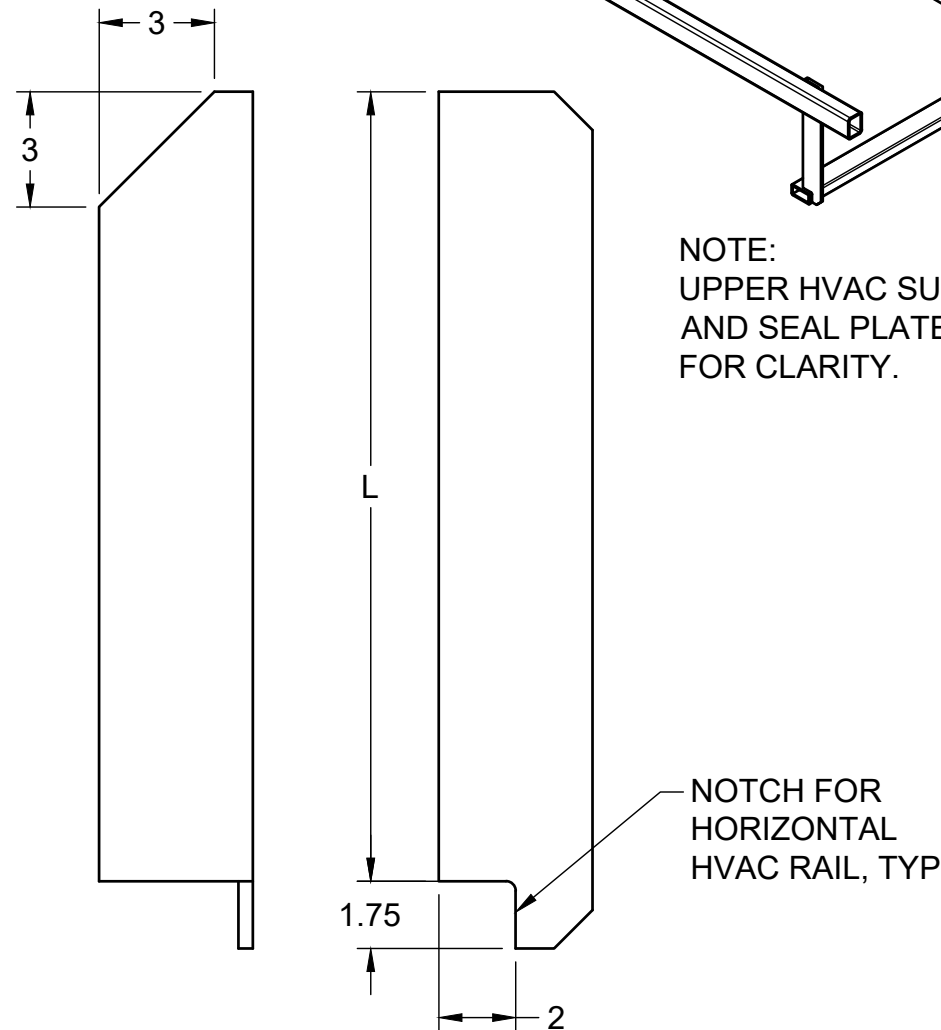
	PROJECT MOTIVE POWER AND EQUIPMENT PASSENGER COACHES		
	TITLE ARR 551-554 UNDER CAR HVAC SUPPORT ARRC PROVIDED HVAC SUBFRAME		
	APPROVED ARRC	SCALE 1:20	SHEET 2/3
	CHECKED ARRC	DATE 8/22/2025	
	DRAWN CDL		



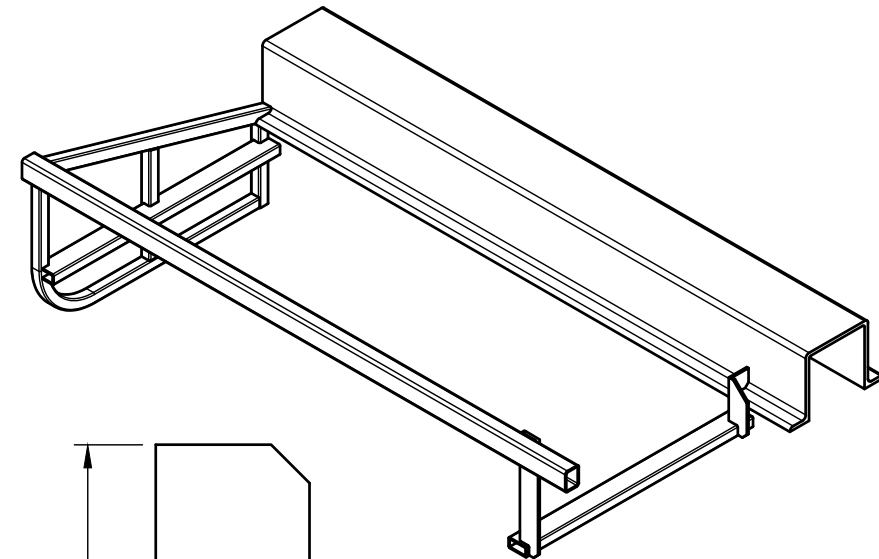
INBOARD CENTERSILL SUPPORT
FABRICATE FROM 4"x4"x0.375"
ASTM A36 ANGLE
L PER FIELD MEASUREMENTS




DETAIL G
TYPICAL SUBFRAME TO
EXISTING STRUCTURE
CONNECTION



OUTBOARD SIDESILL SUPPORT
FABRICATE FROM 4"x4"x0.375"
ASTM A36 ANGLE
L PER FIELD MEASUREMENTS



NOTE:
UPPER HVAC SUBFRAME
AND SEAL PLATES OMITTED
FOR CLARITY.

 ALASKA RAILROAD CORPORATION ENGINEERING SERVICES	PROJECT MOTIVE POWER AND EQUIPMENT PASSENGER COACHES		
	TITLE ARR 551-554 UNDER CAR HVAC SUPPORT CONTRACTOR SUPPLIED SUPPORTS & INSTALL		
	APPROVED ARRC	SCALE 1:20	SHEET 3/3
	CHECKED ARRC	DATE 8/22/2025	
	DRAWN CDL		