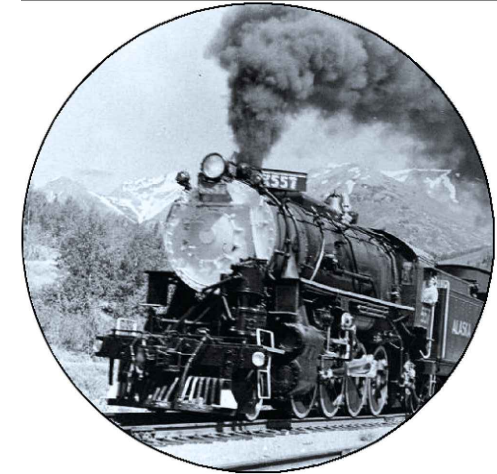


ALASKA RAILROAD CORPORATION



ANDERSON DETECTOR SITE M.P. 395.16



NOTES:

1. ALL WIRING IN BUNGALOW IS #16 AWG FLEX TEFLON UNLESS OTHERWISE NOTED.

LEGEND:

- ∠ TRACK ARRESTER
- △ EQUALIZER
- ∠ LINE ARRESTER
- ⊠ NO 6 AWG THNN/THWN FLEX WIRE WITH RED SHEATH (B12)
- ⊡ NO 6 AWG THNN/THWN FLEX WIRE WITH BLACK SHEATH (N12)
- ⊠ NO 6 AWG THNN/THWN FLEX WIRE WITH GREEN SHEATH (SAFETY GROUND)
- ⊞ TWISTED WIRE TWO TURNS PER FOOT

COLORED PLANS

RED = ⊕ = IN
YELLOW = ⊗ = OUT

REVISIONS

DESIGNED ANDERSON 06-29-21
XRL/JDS DETECTOR SITE
SEQ # A0002

SIGNAL ENGINEERING		The ALASKA RAILROAD CORPORATION P.O. BOX 107500 , ANCHORAGE , ALASKA 99510-7500	
ANDERSON DETECTOR SITE M.P. 395.16			
CONSOLIDATED DETECTOR LOCATION			
DRAWN: XRL	DWG NO. 039516D	00 SHEET OF 22	
DATE: 06-29-21			

DRAWING NO.	DESCRIPTION	REVISION DATE													
039516D-00	TITLE SHEET														06/29/21
039516D-01	INDEX														06/29/21
039516D-02	TRACK OVERVIEW														06/29/21
039516D-03	NG SMARTSCAN SYSTEM TRACK LAYOUT														06/29/21
039516D-04	RAILBAM TRACK LAYOUT TOP VIEW														06/29/21
039516D-05	RAILBAM TRACK DETAIL														06/29/21
039516D-06	RAILBAM TRACK DETAIL SIDE PROFILE														06/29/21
039516D-07	RAILBAM TRACK DETAIL CLEARANCE VIEW														06/29/21
039516D-08	WILD TRACK LAYOUT														06/29/21
039516D-09	NG SMARTSCAN CIRCUIT CONFIGURATION														06/29/21
039516D-10	DED / B12/B24 BATTERY DETAIL														06/29/21
039516D-11	BUNGALOW POWER DISTRIBUTION														06/29/21
039516D-12	8'X16' BUNGALOW OVERHEAD														06/29/21
039516D-13	BUNGALOW TERMINAL BOARD FRONT														06/29/21
039516D-14	BUNGALOW TERMINAL BOARD BACK														06/29/21
039516D-15	BUNGALOW 19" RACK FRONT/BACK														06/29/21
039516D-16	BUNGALOW SIDE "A" LAYOUT (B WALL)														06/29/21
039516D-17	BUNGALOW SIDE "A" LAYOUT (D WALL)														06/29/21
039516D-18	BUNGALOW SIDE "B" LAYOUT														06/29/21
039516D-19	BUNGALOW SIDE "C" LAYOUT (B WALL)														06/29/21
039516D-20	BUNGALOW SIDE "C" LAYOUT (D WALL)														06/29/21
039516D-21	BUNGALOW SIDE "D" LAYOUT														06/29/21
039516D-22	CABLE LAYOUT DETAIL														06/29/21

**ALL NEW*

COLORED PLANS

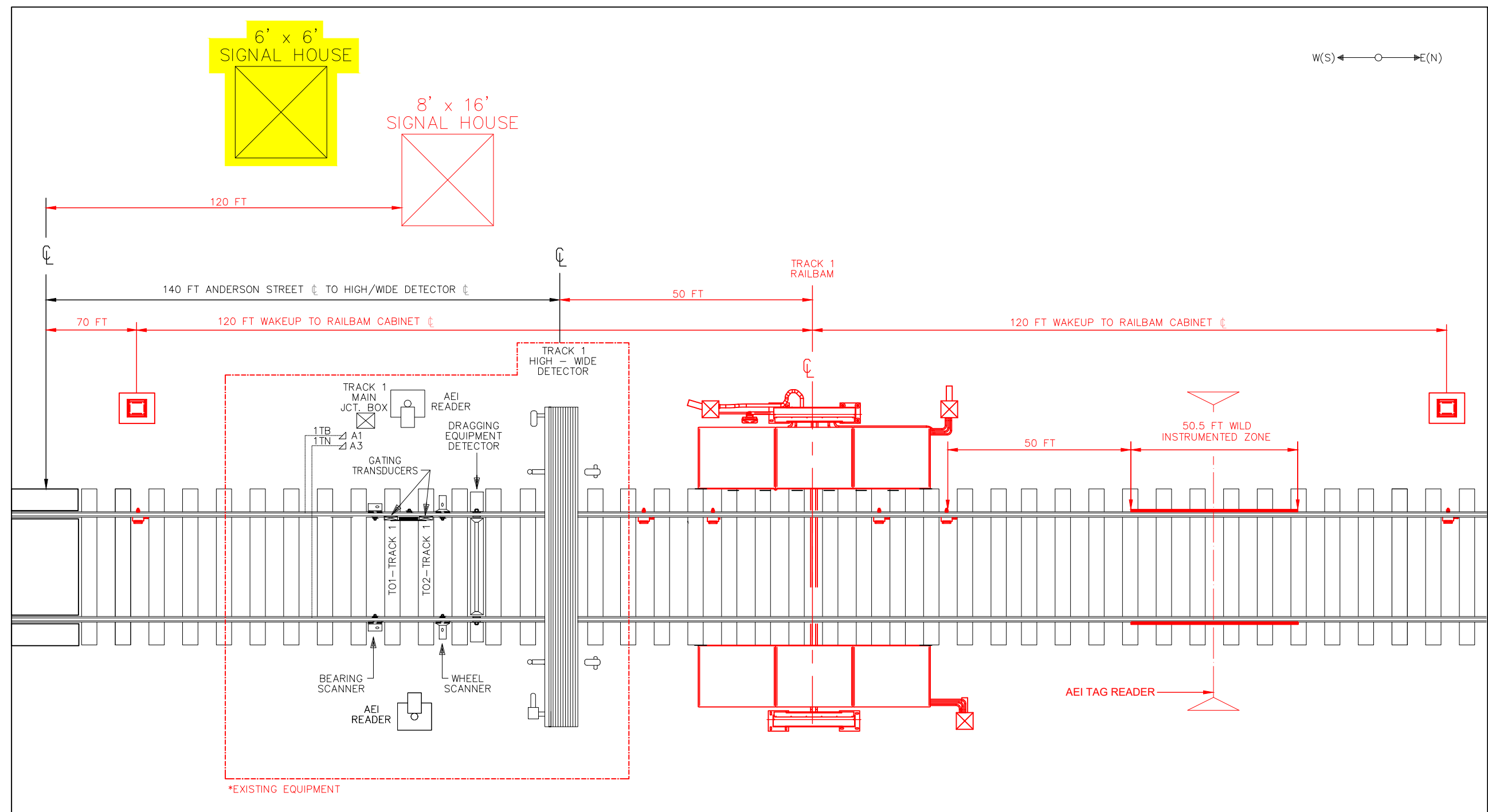
RED = -⊕ = IN
YELLOW = -✱ = OUT

REVISIONS

DESIGNED ANDERSON 06-29-21
DETECTOR SITE
XRL/JDS SEQ # A0002

The ALASKA RAILROAD CORPORATION
SIGNAL ENGINEERING P.O. BOX 107500 , ANCHORAGE , ALASKA 99510-7500
ANDERSON DETECTOR SITE
M.P. 395.16
CONSOLIDATED DETECTOR LOCATION

DRAWN: XRL DWG NO. 039516D
DATE: 06-29-21 SHEET OF 22



W(S) ← ○ → E(N)

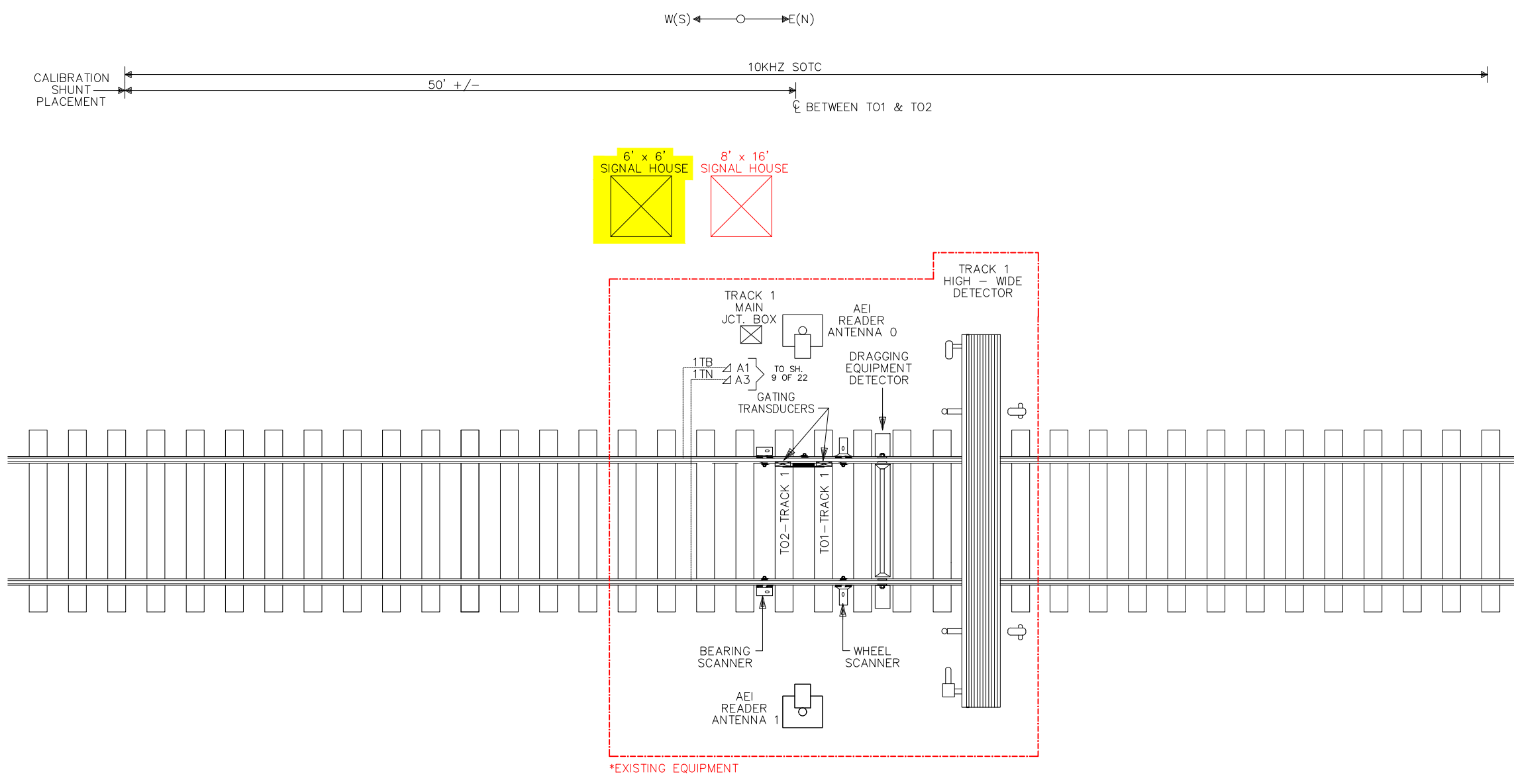
****NOT TO SCALE***

COLORED PLANS
 RED = ○ = IN
 YELLOW = ✕ = OUT

REVISIONS

DESIGNED	06-29-21
ANDERSON DETECTOR SITE	
XRL/JDS	SEQ # A0002

<i>The ALASKA RAILROAD CORPORATION</i>	
P.O. BOX 107500 , ANCHORAGE , ALASKA 99510-7500	
ANDERSON DETECTOR SITE	
M.P. 395.16	
CONSOLIDATED DETECTOR LOCATION	
DRAWN: XRL	DWG NO. 039516D
DATE: 06-29-21	SHEET 02 OF 22



COLORED PLANS

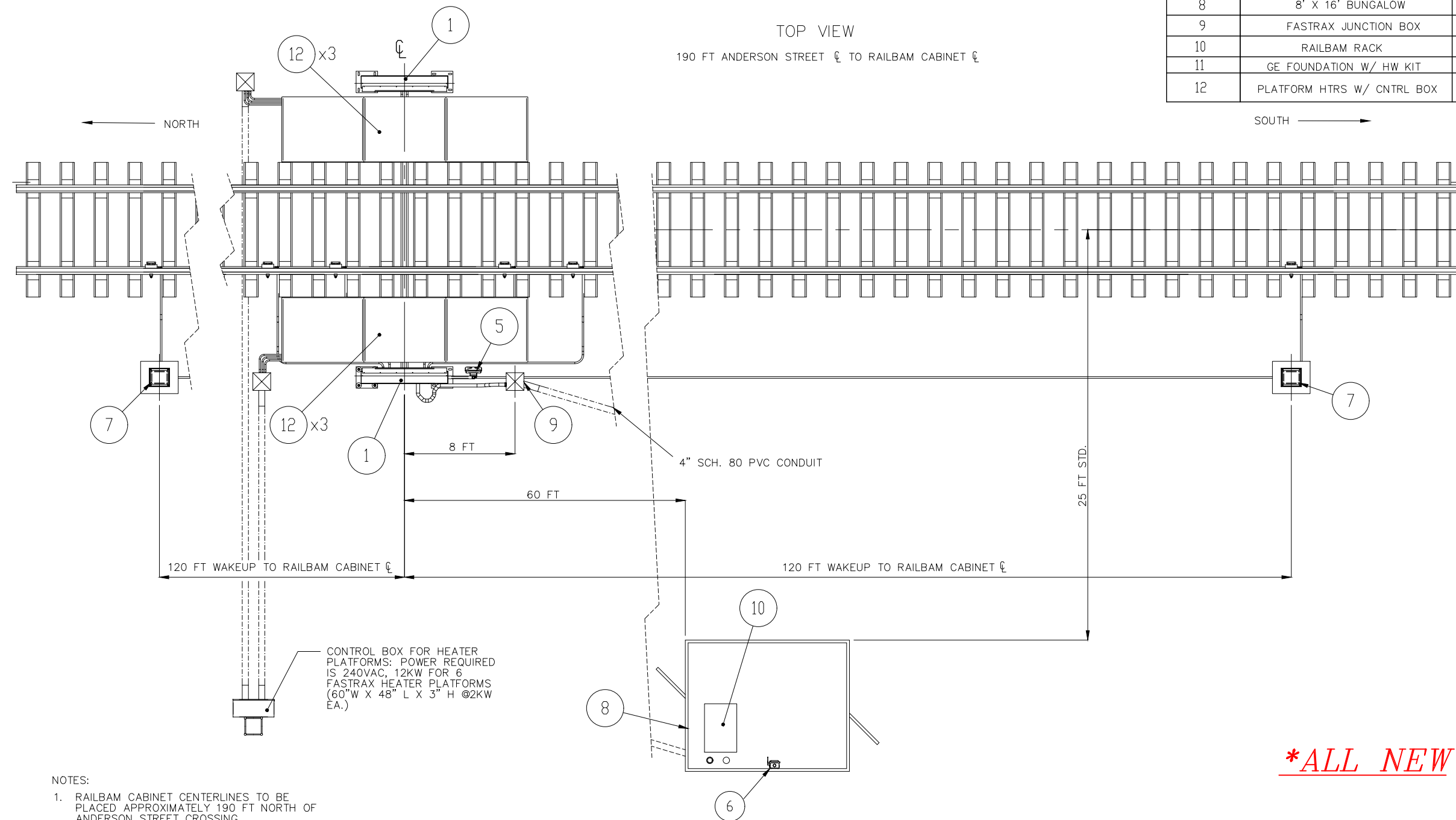
RED = ⊕ = IN
 YELLOW = ⊗ = OUT

REVISIONS

DESIGNED 06-29-21
 ANDERSON DETECTOR SITE
 XRL/JDS SEQ # A0002

<i>The ALASKA RAILROAD CORPORATION</i>	
SIGNAL ENGINEERING P.O. BOX 107500 , ANCHORAGE , ALASKA 99510-7500	
ANDERSON DETECTOR SITE	
M.P. 395.16	
CONSOLIDATED DETECTOR LOCATION	
DRAWN: XRL	DWG NO. 039516D
DATE: 06-29-21	03 SHEET OF 22

ITEM NO.	DESCRIPTION	QTY.
1	SLIM LINE CABINET	2
2	ADV UNIV. WHEEL SENSOR	6
3	ADV UNIV. WHEEL SNSR BRACKET	6
4	CABINET SUPPORT FRAME	2
5	CABINET MNT TAG READER	1
6	PWR DISTR/DISC BOX-20 AMP	1
7	TRACKSIDE DISCONNECT BOX(TDB)	2
8	8' X 16' BUNGALOW	1
9	FASTRAX JUNCTION BOX	1
10	RAILBAM RACK	1
11	GE FOUNDATION W/ HW KIT	4
12	PLATFORM HTRS W/ CNTRL BOX	6



- NOTES:
1. RAILBAM CABINET CENTERLINES TO BE PLACED APPROXIMATELY 190 FT NORTH OF ANDERSON STREET CROSSING.
 2. WELD JOINTS TO BE AT LEAST 15 FT AWAY FROM RAILBAM CABINETS. WELD JOINTS TO BE AT LEAST 15 FT AWAY FROM RAILBAM CABINETS.

****ALL NEW***

*DRAWINGS FROM TRACK IQ DRAWING 190000-001-000 ISSUE 0B 26APR21

COLORED PLANS

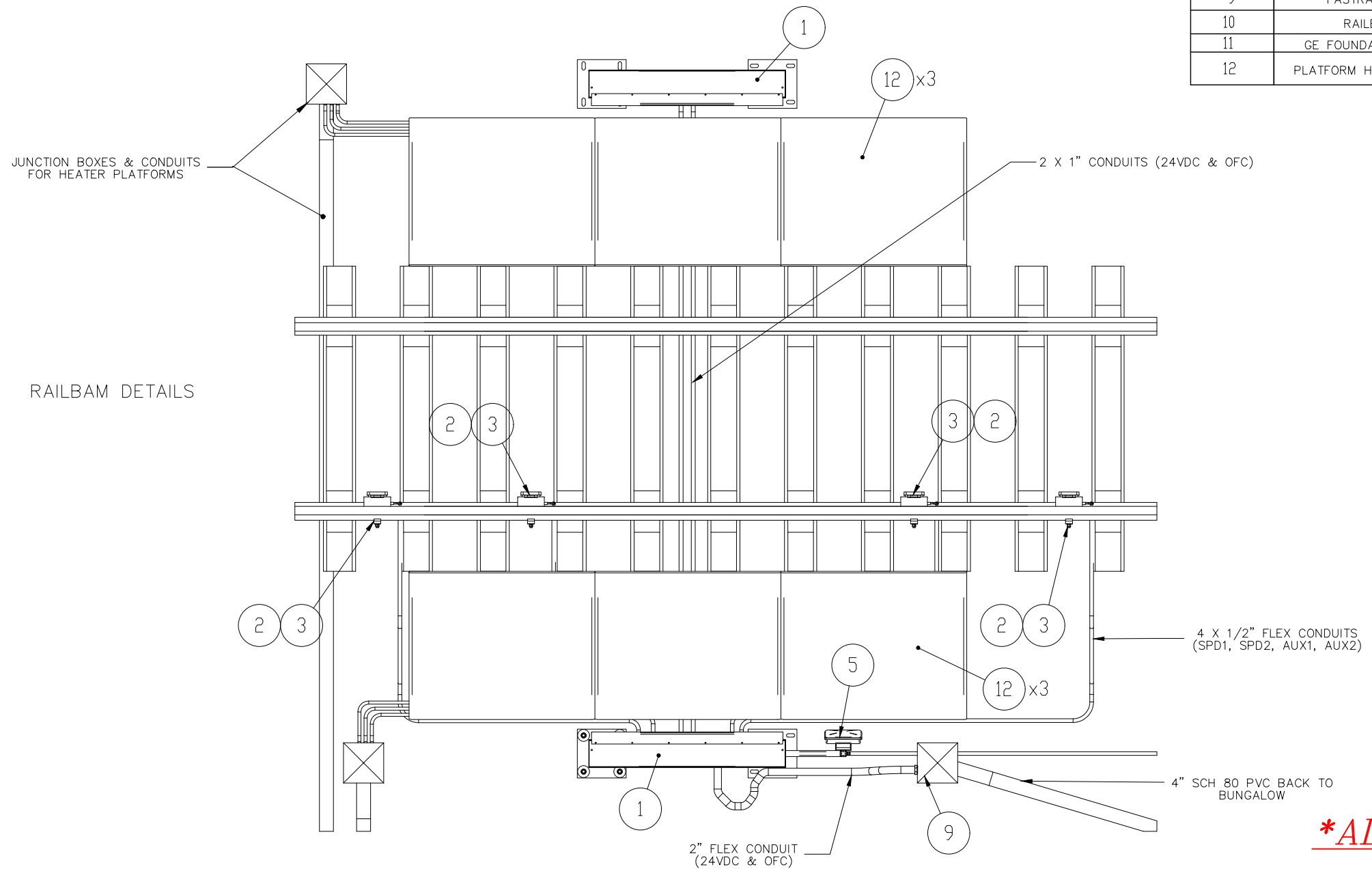
RED = \ominus = IN
 YELLOW = \otimes = OUT

REVISIONS

DESIGNED ANDERSON 06-29-21
 DETECTOR SITE
 XRL/JDS SEQ # A0002

The ALASKA RAILROAD CORPORATION	
SIGNAL ENGINEERING P.O. BOX 107500 , ANCHORAGE , ALASKA 99510-7500	
ANDERSON DETECTOR SITE	
M.P. 395.16	
CONSOLIDATED DETECTOR LOCATION	
DRAWN: XRL	DWG NO. 039516D
DATE: 06-29-21	04 SHEET OF 22

ITEM NO.	DESCRIPTION	QTY.
1	SLIM LINE CABINET	2
2	ADV UNIV. WHEEL SENSOR	6
3	ADV UNIV. WHEEL SNSR BRACKET	6
4	CABINET SUPPORT FRAME	2
5	CABINET MNT TAG READER	1
6	PWR DISTR/DISC BOX-20 AMP	1
7	TRACKSIDE DISCONNECT BOX(TDB)	2
8	8' X 16' BUNGALOW	1
9	FASTRAX JUNCTION BOX	1
10	RAILBAM RACK	1
11	GE FOUNDATION W/ HW KIT	4
12	PLATFORM HTRS W/ CNTRL BOX	6



***ALL NEW**

*DRAWINGS FROM TRACK IQ DRAWING 190000-001-000 ISSUE 0B 26APR21

COLORED PLANS

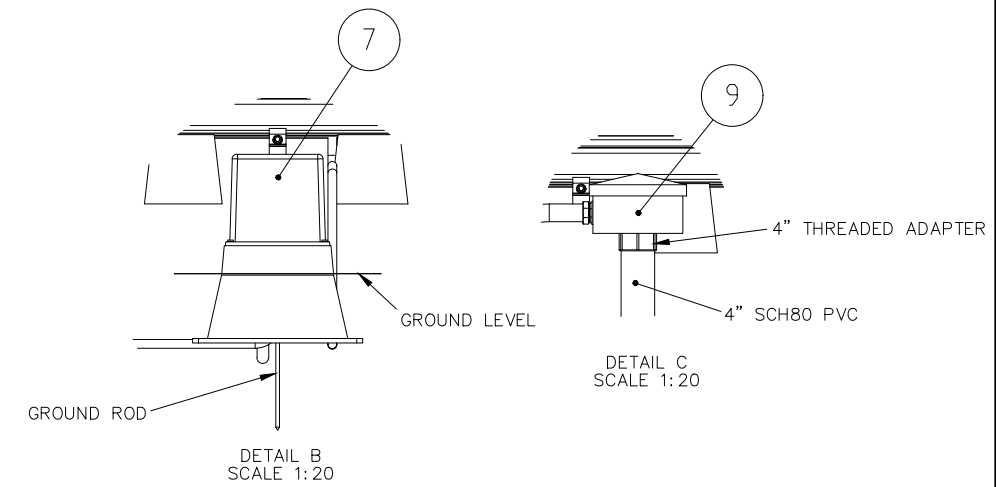
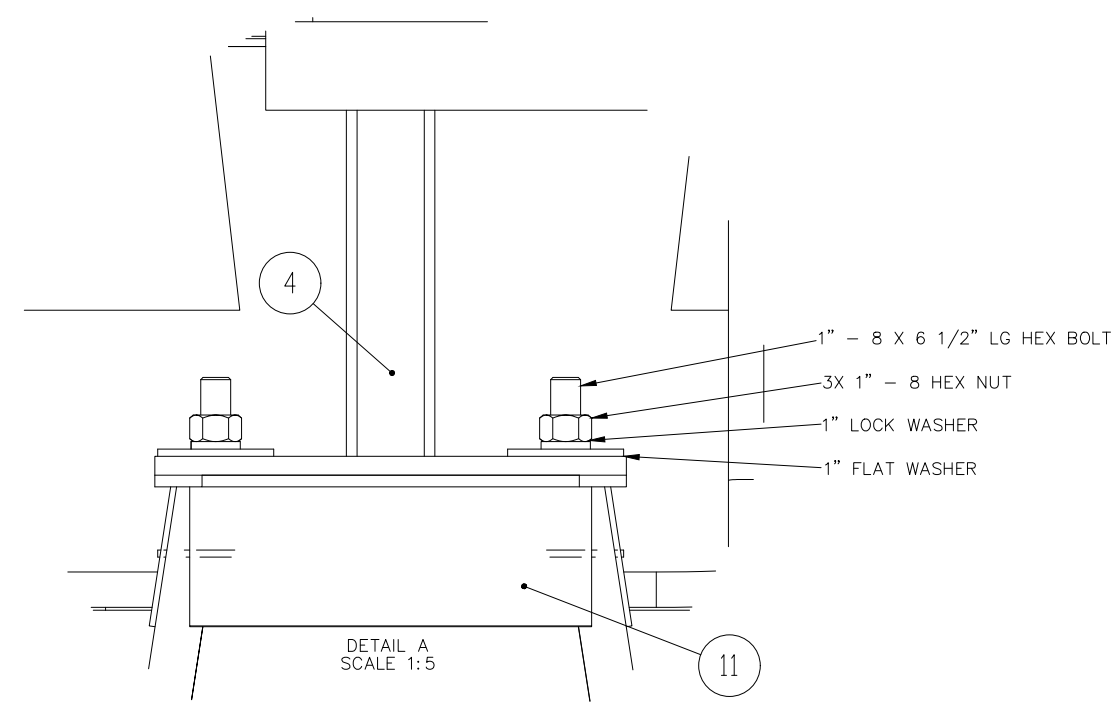
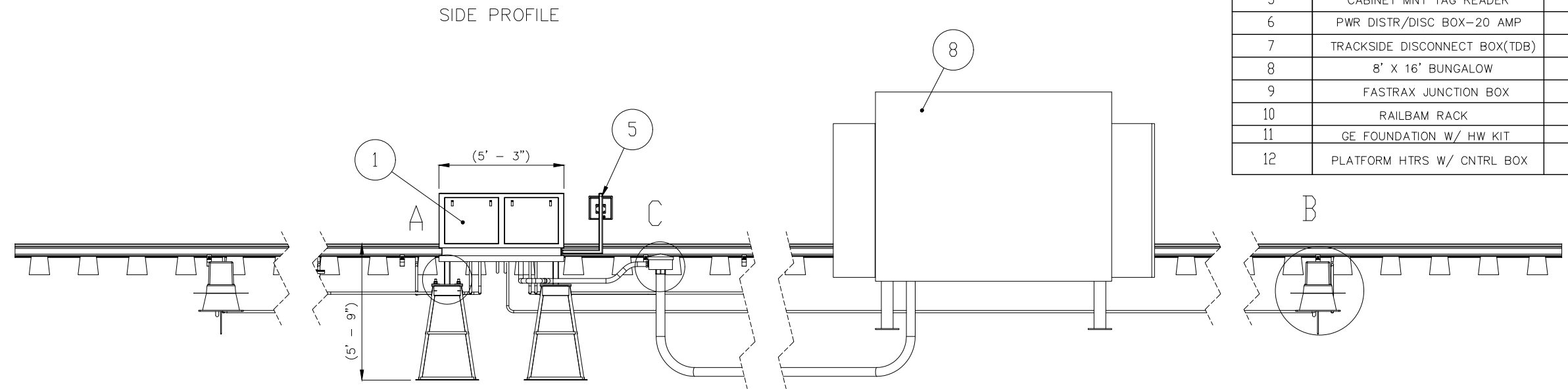
RED = ⊕ = IN
 YELLOW = ⊗ = OUT

REVISIONS

DESIGNED 06-29-21
 ANDERSON DETECTOR SITE
 XRL/JDS SEQ # A0002

The ALASKA RAILROAD CORPORATION	
SIGNAL ENGINEERING P.O. BOX 107500 , ANCHORAGE , ALASKA 99510-7500	
ANDERSON DETECTOR SITE	
M.P. 395.16	
CONSOLIDATED DETECTOR LOCATION	
DRAWN: XRL	DWG NO. 039516D
DATE: 06-29-21	05 SHEET OF 22

ITEM NO.	DESCRIPTION	QTY.
1	SLIM LINE CABINET	2
2	ADV UNIV. WHEEL SENSOR	6
3	ADV UNIV. WHEEL SNSR BRACKET	6
4	CABINET SUPPORT FRAME	2
5	CABINET MNT TAG READER	1
6	PWR DISTR/DISC BOX-20 AMP	1
7	TRACKSIDE DISCONNECT BOX(TDB)	2
8	8' X 16' BUNGALOW	1
9	FASTRAX JUNCTION BOX	1
10	RAILBAM RACK	1
11	GE FOUNDATION W/ HW KIT	4
12	PLATFORM HTRS W/ CNTRL BOX	6



****ALL NEW***

- NOTES:
1. THE PREFERRED METHOD FOR INSTALLING THE FOUNDATIONS (11) IS TO PRE-ASSEMBLE THEM TO THE CABINET SUPPORT FRAMES (4).
 2. HEATER PLATFORMS AND BALLAST NOT SHOWN ON THIS PAGE FOR CLARITY.

*DRAWINGS FROM TRACK IQ DRAWING 190000-001-000 ISSUE 0B 26APR21

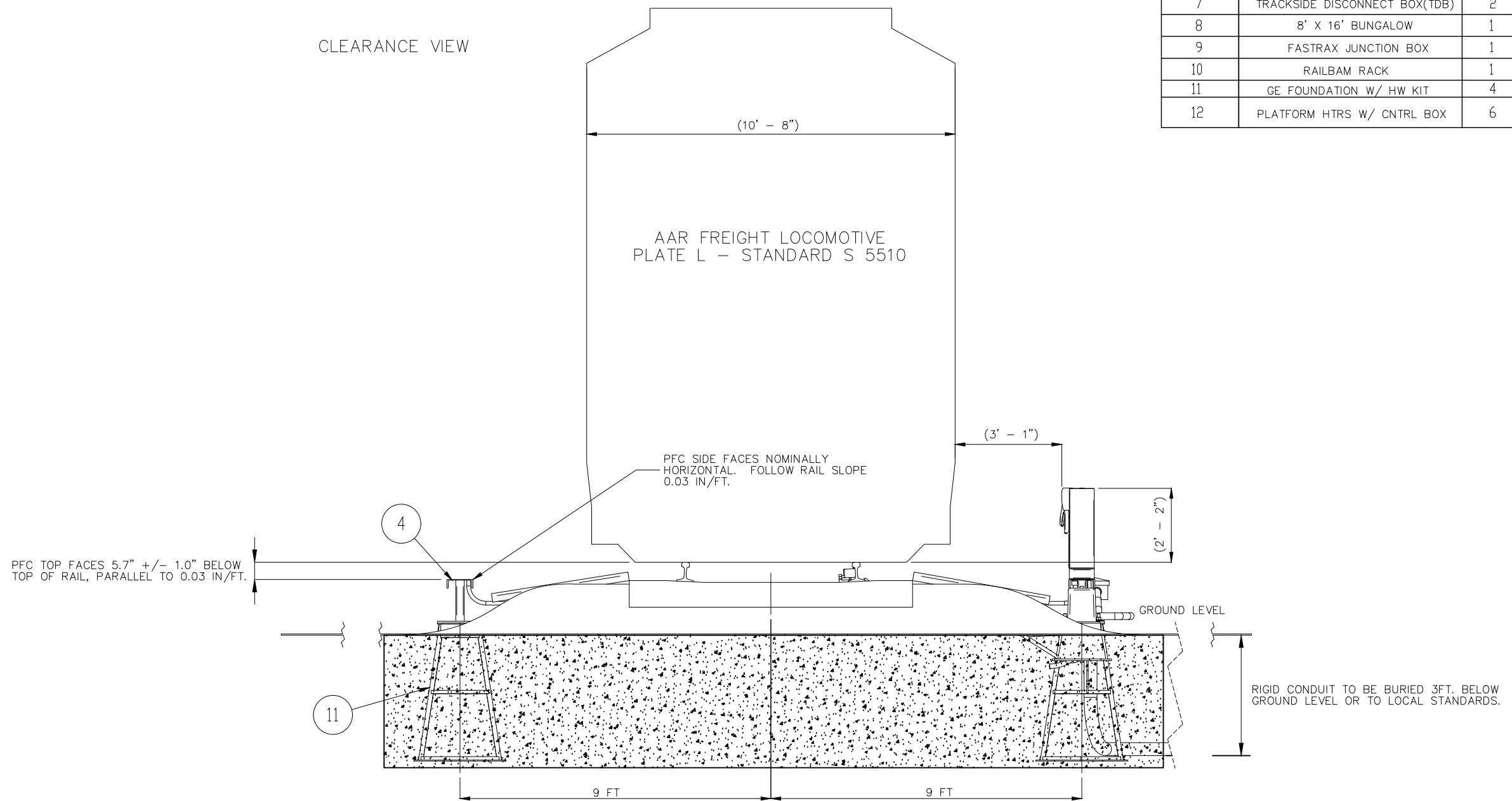
COLORED PLANS
 RED = \ominus = IN
 YELLOW = \otimes = OUT

REVISIONS

DESIGNED ANDERSON 06-29-21
 DETECTOR SITE
 XRL/JDS SEQ # A0002

The ALASKA RAILROAD CORPORATION	
SIGNAL ENGINEERING	P.O. BOX 107500 , ANCHORAGE , ALASKA 99510-7500
ANDERSON DETECTOR SITE	
M.P. 395.16	
CONSOLIDATED DETECTOR LOCATION	
DRAWN: XRL	DWG NO. 039516D
DATE: 06-29-21	06 SHEET OF 22

ITEM NO.	DESCRIPTION	QTY.
1	SLIM LINE CABINET	2
2	ADV UNIV. WHEEL SENSOR	6
3	ADV UNIV. WHEEL SNSR BRACKET	6
4	CABINET SUPPORT FRAME	2
5	CABINET MNT TAG READER	1
6	PWR DISTR/DISC BOX-20 AMP	1
7	TRACKSIDE DISCONNECT BOX(TDB)	2
8	8' X 16' BUNGALOW	1
9	FASTRAX JUNCTION BOX	1
10	RAILBAM RACK	1
11	GE FOUNDATION W/ HW KIT	4
12	PLATFORM HTRS W/ CNTRL BOX	6



****ALL NEW***

COLORED PLANS

RED = \ominus = IN
YELLOW = \otimes = OUT

REVISIONS

DESIGNED ANDERSON 06-29-21
DETECTOR SITE
XRL/JDS SEQ # A0002

The ALASKA RAILROAD CORPORATION	
SIGNAL ENGINEERING P.O. BOX 107500 , ANCHORAGE , ALASKA 99510-7500	
ANDERSON DETECTOR SITE	
M.P. 395.16	
CONSOLIDATED DETECTOR LOCATION	
DRAWN: XRL	DWG NO. 039516D
DATE: 06-29-21	07 SHEET OF 22

*DRAWINGS FROM TRACK IQ DRAWING 190000-001-000 ISSUE 0B 26APR21

NOTES: UNLESS OTHERWISE SPECIFIED

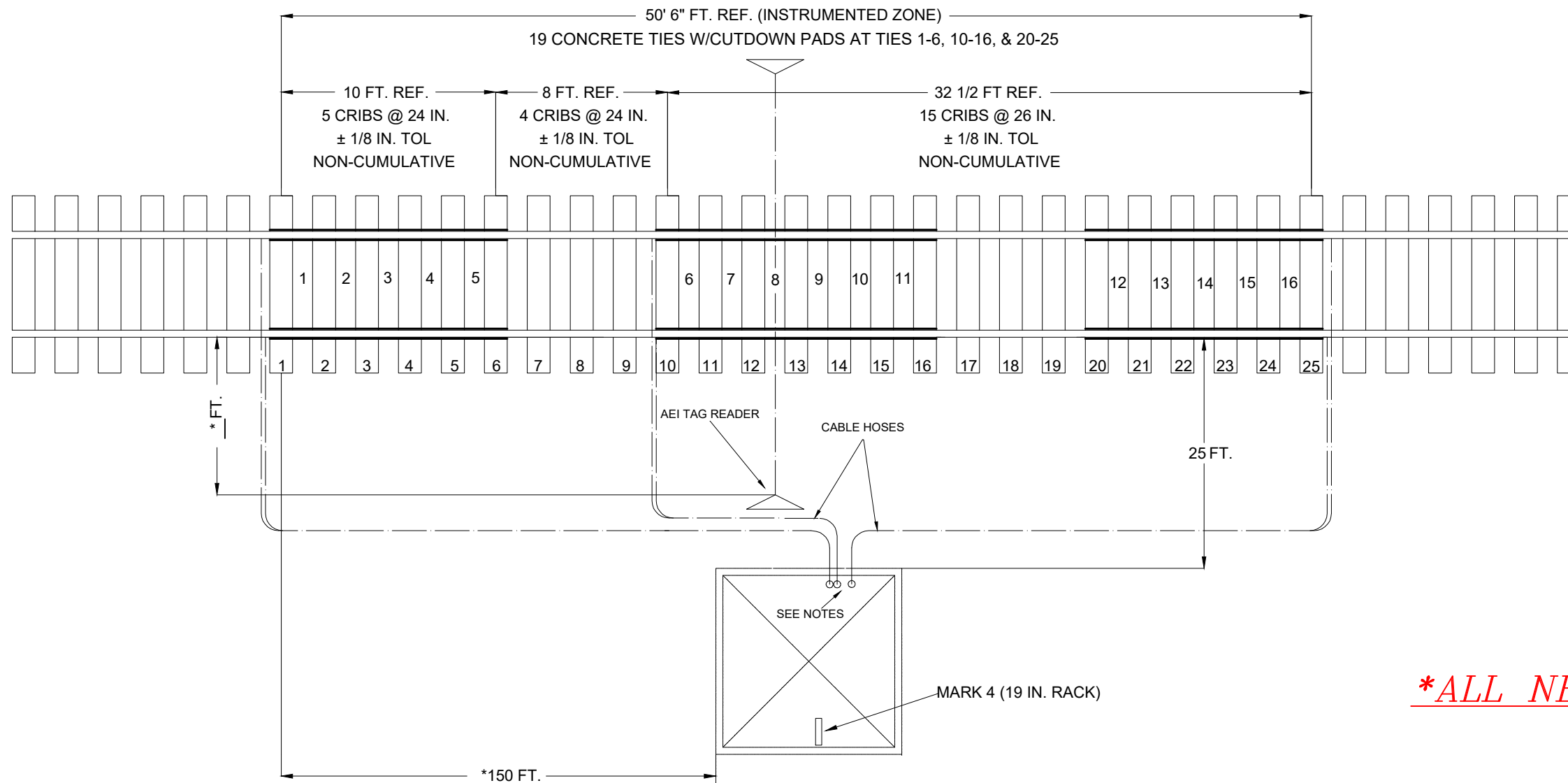
1. THE RAILS WITHIN THE TOTAL INSTRUMENTED ZONE SHALL CONTAIN NO WELDS (INCLUDING FACTORY WELDS), JOINTS, DRILL HOLES OR ELECTRICAL INSTALLATION PRIOR TO THE SALIENT SYSTEM INSTALLATION, AND THEY SHALL NOT CONTAIN ANY FIELD WELDS WITHIN 50 FEET OF THE BEGINNING OR END OF THE INSTRUMENTED ZONE BOUNDARIES.

2. THE TRACK UTILIZES 150 CONCRETE TIES LOCATED SYMMETRICALLY WITHIN AND AROUND THE INSTRUMENTED ZONE, PROVIDING 100 FEET OF STABILIZED STRUCTURE ON EITHER SIDE.

3. IF CONDUIT IS UTILIZED FOR ROUTING THE CABLES BETWEEN THE BUNGALOW AND THE TRACK, TWO CONDUITS, 4" DIAMETER OR LARGER MUST BE USED FOR CABLE HOSES.

4. IF CONDUIT IS UTILIZED FOR ROUTING THE CABLES BETWEEN THE BUNGALOW AND THE TAG READERS, TWO CONDUITS, 3" DIAMETER OR LARGER MUST BE USED FOR TAG READER HOSES.

5. IF CONDUIT IS UTILIZED FOR ROUTING THE CABLES BETWEEN THE BUNGALOW AND THE TRACK, AND A CABLE BEND IS REQUIRED WITHIN THE CONDUIT, THE CONDUIT MUST ALLOW FOR A BEND RADIUS OF 24 INCHES MINIMUM.



****ALL NEW***

* FIELD MEASUREMENT

COLORED PLANS

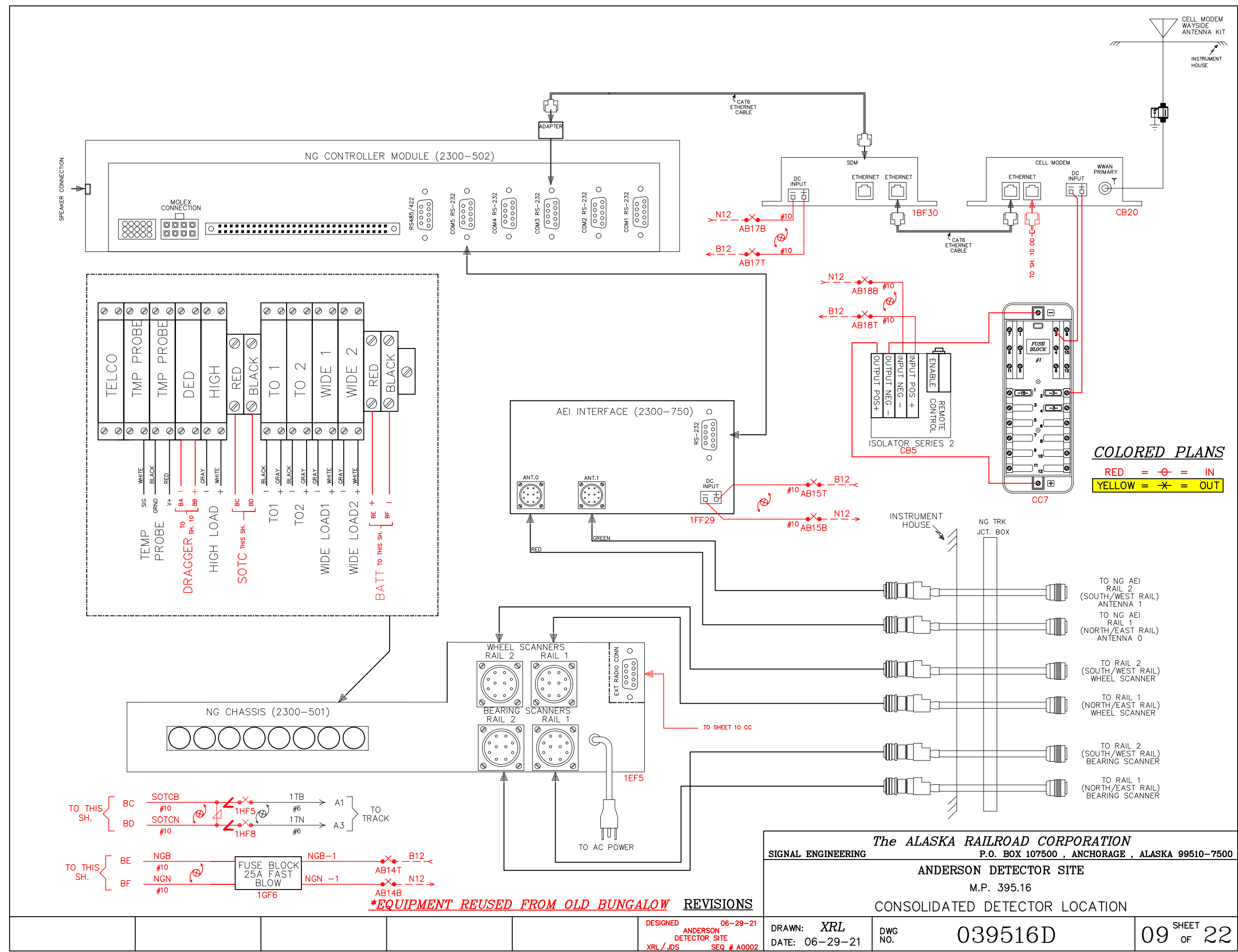
RED = ⊕ = IN
 YELLOW = ⊗ = OUT

REVISIONS

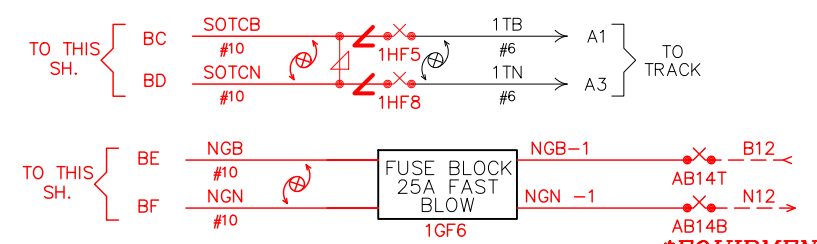
DESIGNED ANDERSON 06-29-21
 DETECTOR SITE
 XRL/JDS SEQ # A0002

The ALASKA RAILROAD CORPORATION	
SIGNAL ENGINEERING P.O. BOX 107500 , ANCHORAGE , ALASKA 99510-7500	
ANDERSON DETECTOR SITE	
M.P. 395.16	
CONSOLIDATED DETECTOR LOCATION	
DRAWN: XRL	DWG NO. 039516D
DATE: 06-29-21	08 SHEET OF 22

**DRAWINGS FROM SALIENT SYSTEMS DRAWING 40060 15APR21



COLORED PLANS
 RED = ⊕ = IN
 YELLOW = ⊗ = OUT



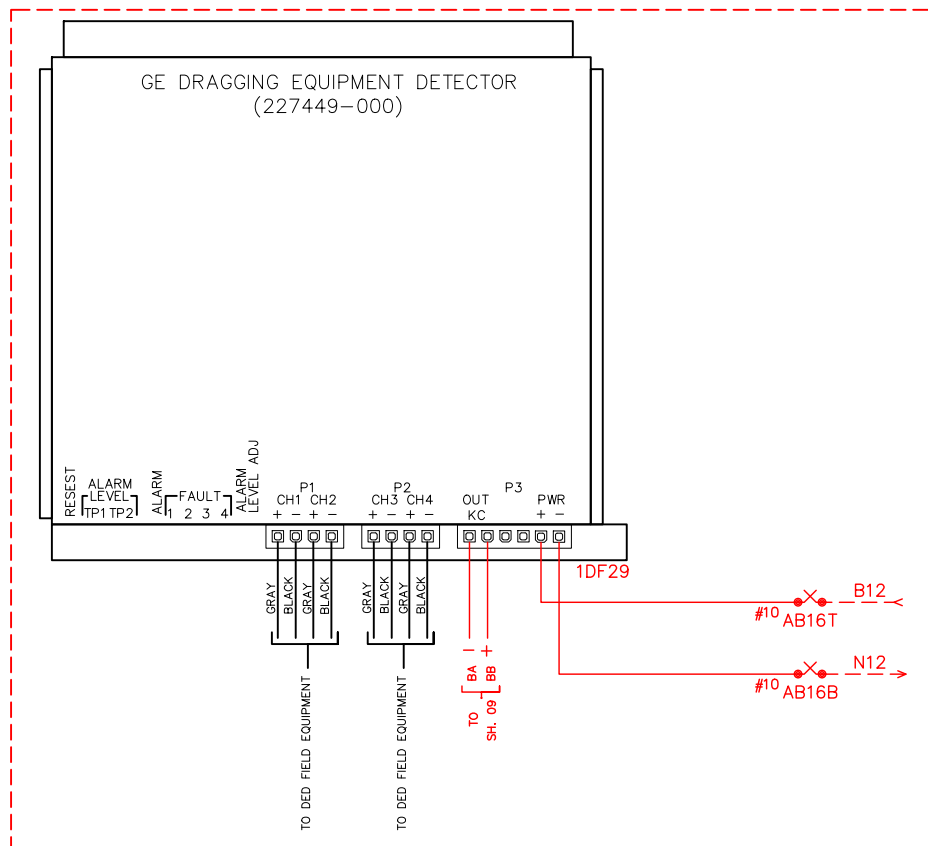
***EQUIPMENT REUSED FROM OLD BUNGALOW REVISIONS**

The ALASKA RAILROAD CORPORATION
 SIGNAL ENGINEERING P.O. BOX 107500, ANCHORAGE, ALASKA 99510-7500

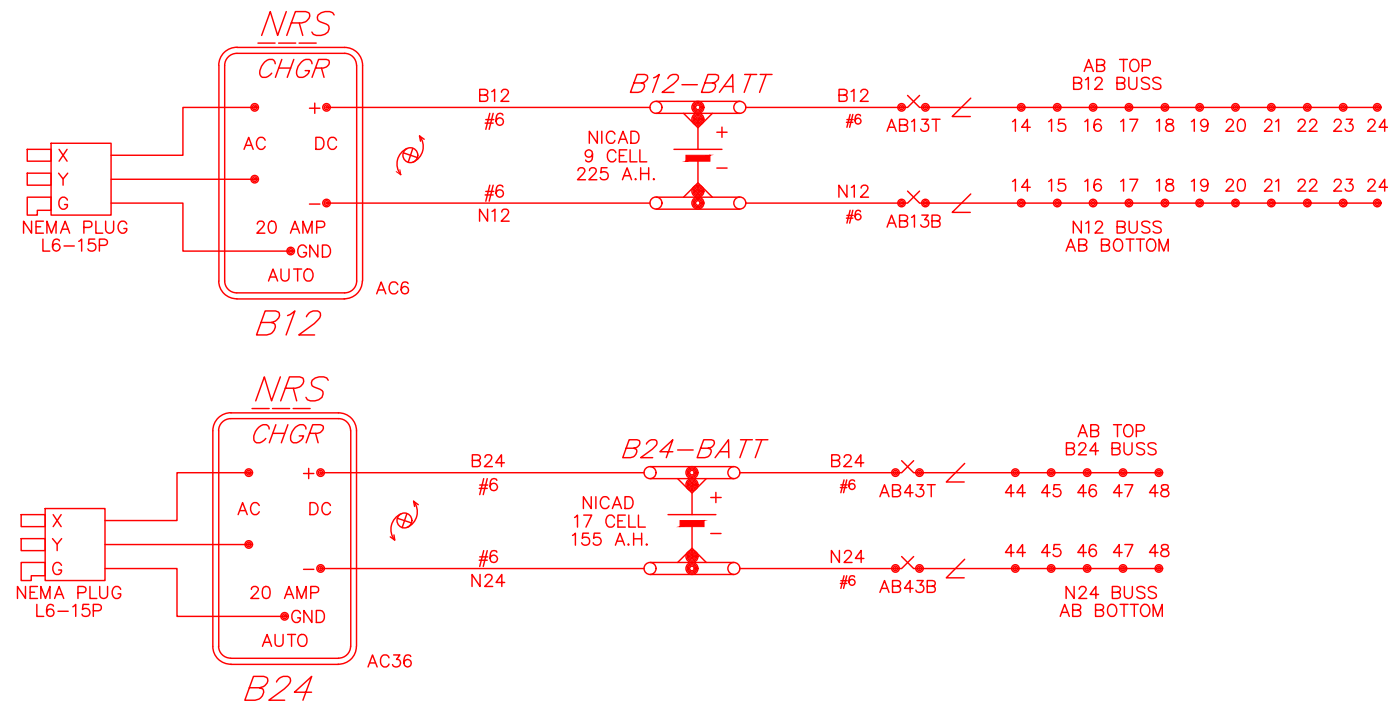
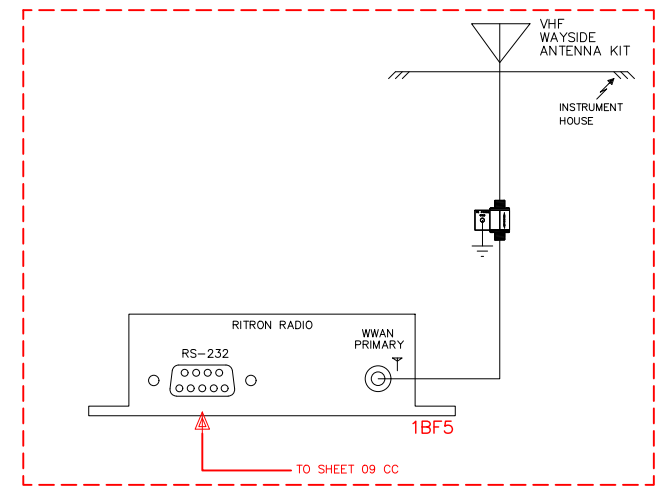
ANDERSON DETECTOR SITE
 M.P. 395.16
 CONSOLIDATED DETECTOR LOCATION

DESIGNED ANDERSON XRL/JDS	DATE: 06-29-21	DRAWN: XRL	DWG NO. 039516D
06-29-21 ANDERSON DETECTOR SITE SEQ # A0002		09 SHEET OF 22	

**EQUIPMENT REUSED FROM OLD BUNGALOW*



**EQUIPMENT REUSED FROM OLD BUNGALOW*



COLORED PLANS

RED = ⊕ = IN
 YELLOW = ⊗ = OUT

REVISIONS

DESIGNED ANDERSON 06-29-21
 XRL/JDS DETECTOR SITE
 SEQ # A0002

The ALASKA RAILROAD CORPORATION
 SIGNAL ENGINEERING P.O. BOX 107500, ANCHORAGE, ALASKA 99510-7500

ANDERSON DETECTOR SITE
 M.P. 395.16

CONSOLIDATED DETECTOR LOCATION

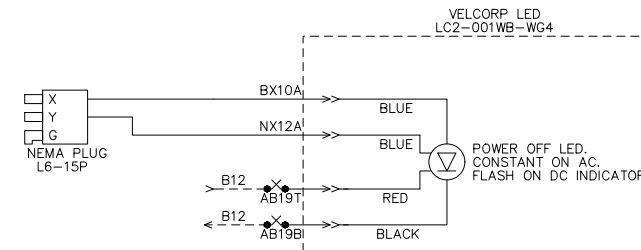
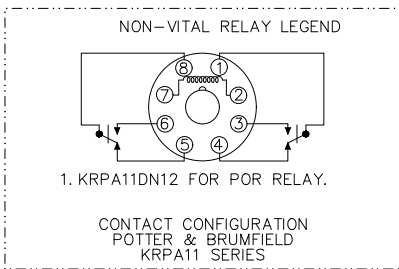
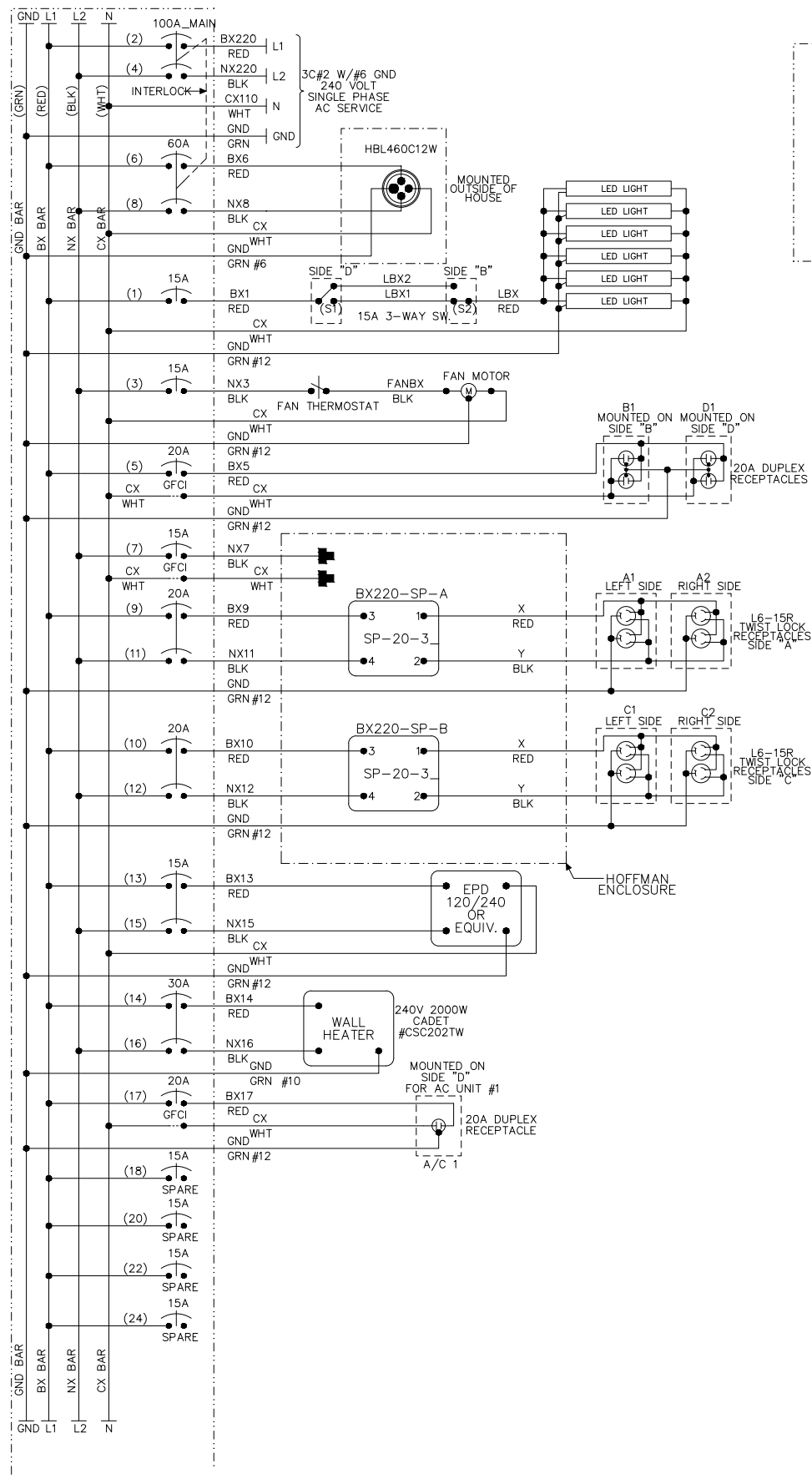
DRAWN: XRL
 DATE: 06-29-21

DWG NO.

039516D

10 SHEET OF 22

SQUARE D PART NUMBERS
 BREAKER BOX: Q0124L1256
 SURFACE KIT: Q0C24US
 GROUND KIT: PK15GTA
 INTERLOCK: Q02DT1



- NOTES:
- USE THE FOLLOWING COLOR CODE:
 GRN - GREEN - SAFETY EQUIPMENT GROUND
 WHT - WHITE - CX110 (NEUTRAL)
 BLK - BLACK - NX220 (L2)
 RED - RED - BX220 (L1)
 EXCEPTIONS TO THE ABOVE COLOR CODE ARE THE PRE-WIRED, SEALED ARRESTER UNITS MOUNTED ON THE BREAKER BOX WHICH HAVE TWO BLACK AND ONE WHITE WIRE EACH.
 - = WIRE NUT, IF NEEDED.
 - MINIMUM WIRE SIZE:
 10 AMP - NO. 14 AWG THHN OR THWN SOLID
 15 AMP - NO. 12 AWG THHN OR THWN SOLID
 20 AMP - NO. 12 AWG THHN OR THWN SOLID
 30 AMP - NO. 10 AWG THHN OR THWN SOLID
 40 AMP - NO. 8 AWG THHN OR THWN SOLID
 60 AMP - NO. 6 AWG THHN OR THWN SOLID
 - GROUND FAULT CIRCUIT INTERRUPTER (GFCI) MUST BE USED ON ALL CIRCUITS SERVING CONVENIENCE OUTLETS AND ANY EQUIPMENT OUTSIDE THE BUNGALOW. RECEPTACLE MOUNTED GFCI MAY BE USED INSTEAD OF BREAKER TYPE.
 - ISOLATION TRANSFORMER IF INSTALLED.
 PRIMARY INPUT CONNECTIONS:
 CONNECT NX7 WIRE TO TERMINALS 2 & 6.
 CONNECT CX WIRE TO TERMINALS 1 & 5.
 SECONDARY OUTPUT CONNECTIONS:
 CONNECT HB WIRE TO TERMINAL 12.
 CONNECT HC WIRE TO TERMINAL 7.
 SECONDARY JUMPERS:
 JUMPER TERMINALS 8 & 11.
 - LIGHT SWITCHES "S1" & "S2" ARE 15A SWITCHES.

****ALL NEW***

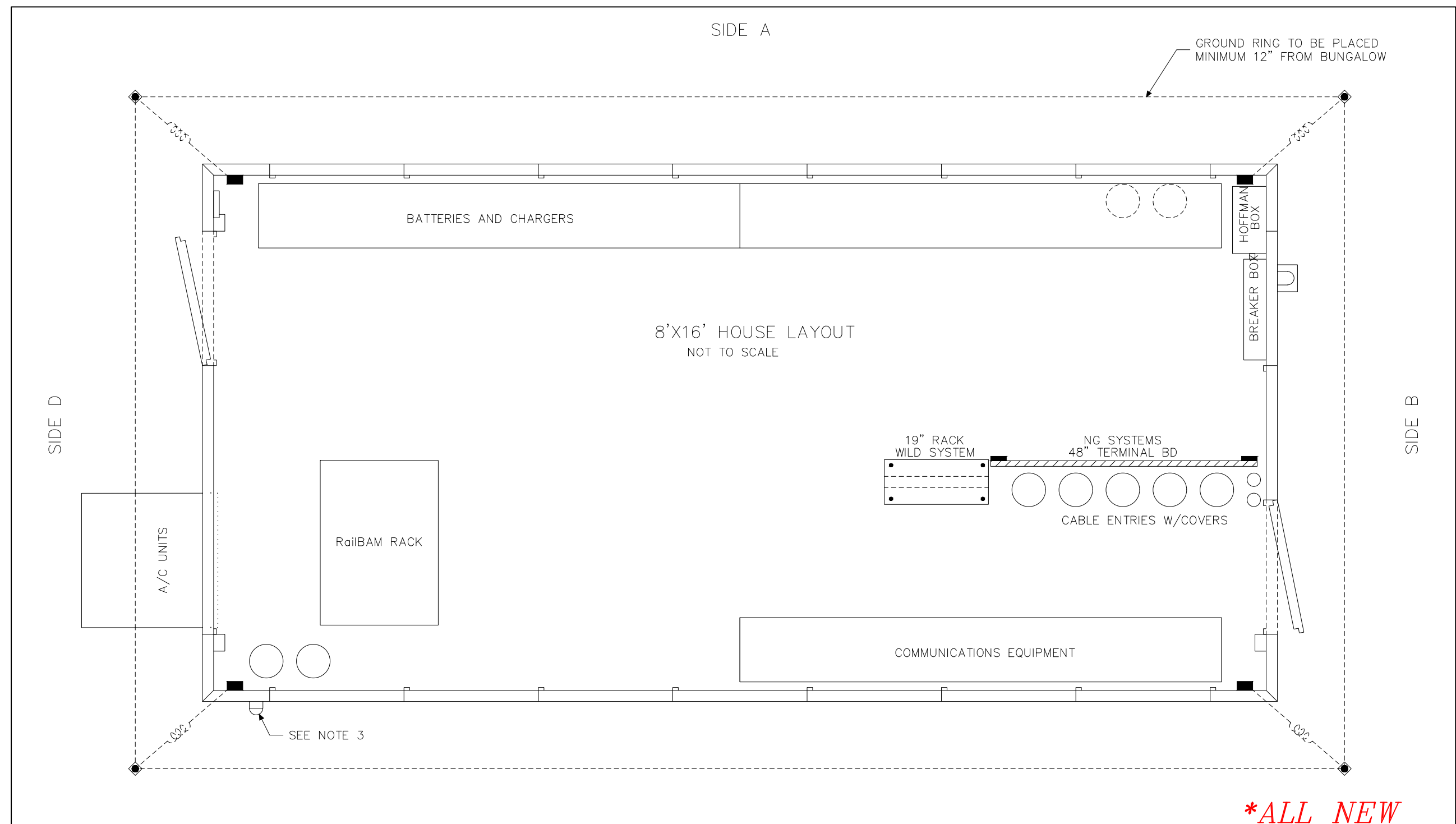
COLORED PLANS

RED = ⊕ = IN
 YELLOW = ⊗ = OUT

REVISIONS

DESIGNED 06-29-21
 ANDERSON DETECTOR SITE
 XRL/JDS SEQ # A0002

The ALASKA RAILROAD CORPORATION	
SIGNAL ENGINEERING P.O. BOX 107500, ANCHORAGE, ALASKA 99510-7500	
ANDERSON DETECTOR SITE	
M.P. 395.16	
CONSOLIDATED DETECTOR LOCATION	
DRAWN: XRL DATE: 06-29-21	DWG NO. 039516D
11 SHEET OF 22	



****ALL NEW***

NOTES:

1. BUNGALOWS AND CASES WHICH ARE EQUIPPED WITH GROUND WIRES ATTACHED TO THE SKIN SHOULD BE CONNECTED DIRECTLY TO GROUND RODS.
2. WHERE USED, GROUND WIRE INSIDE CASE OR BUNGALOW TO BE #6 AWG STRANDED THHN-THWN GREEN NYLON JACKET. OKONITE PN: 116-67-1224 CONNECTED WITH AS SHORT AS POSSIBLE LENGTH BETWEEN EQUIPMENT AND METAL HOUSING SHELL.
3. INSTALL POWER OFF INDICATOR LIGHT ON TRACK SIDE NEAREST THE HIGHWAY AND NEAR EAVE OF HOUSE.

LEGEND:

- ◆ = NX TYP CAP - 4 CONNECTOR
- = (2) 5' GROUND COPPER GROUND ROD W/COUPLER
- = GROUND CONNECTOR UNDER BUNGALOW
- = #6 AWG BARE COPPER GROUND WIRE
- ⊕ = GROUND COIL

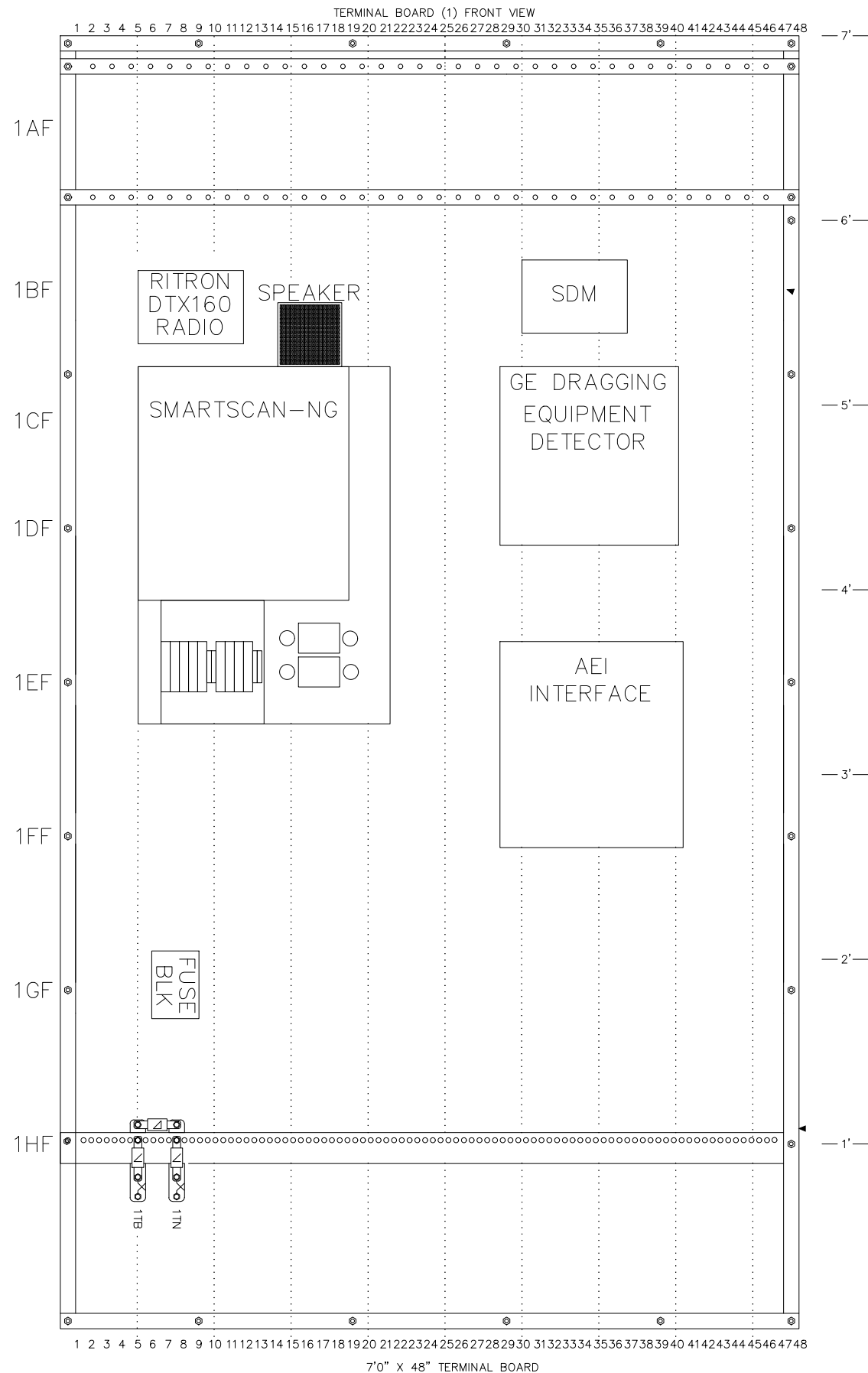
COLORED PLANS

RED = ⊕ = IN
 YELLOW = ✕ = OUT

REVISIONS

DESIGNED	ANDERSON	06-29-21
XRL/JDS	DETECTOR SITE	SEQ # A0002

The ALASKA RAILROAD CORPORATION	
SIGNAL ENGINEERING	P.O. BOX 107500 , ANCHORAGE , ALASKA 99510-7500
ANDERSON DETECTOR SITE	
M.P. 395.16	
CONSOLIDATED DETECTOR LOCATION	
DRAWN: XRL	DWG NO. 039516D
DATE: 06-29-21	12 SHEET OF 22



**ALL NEW*

**EQUIPMENT REUSED FROM OLD BUNGALOW*

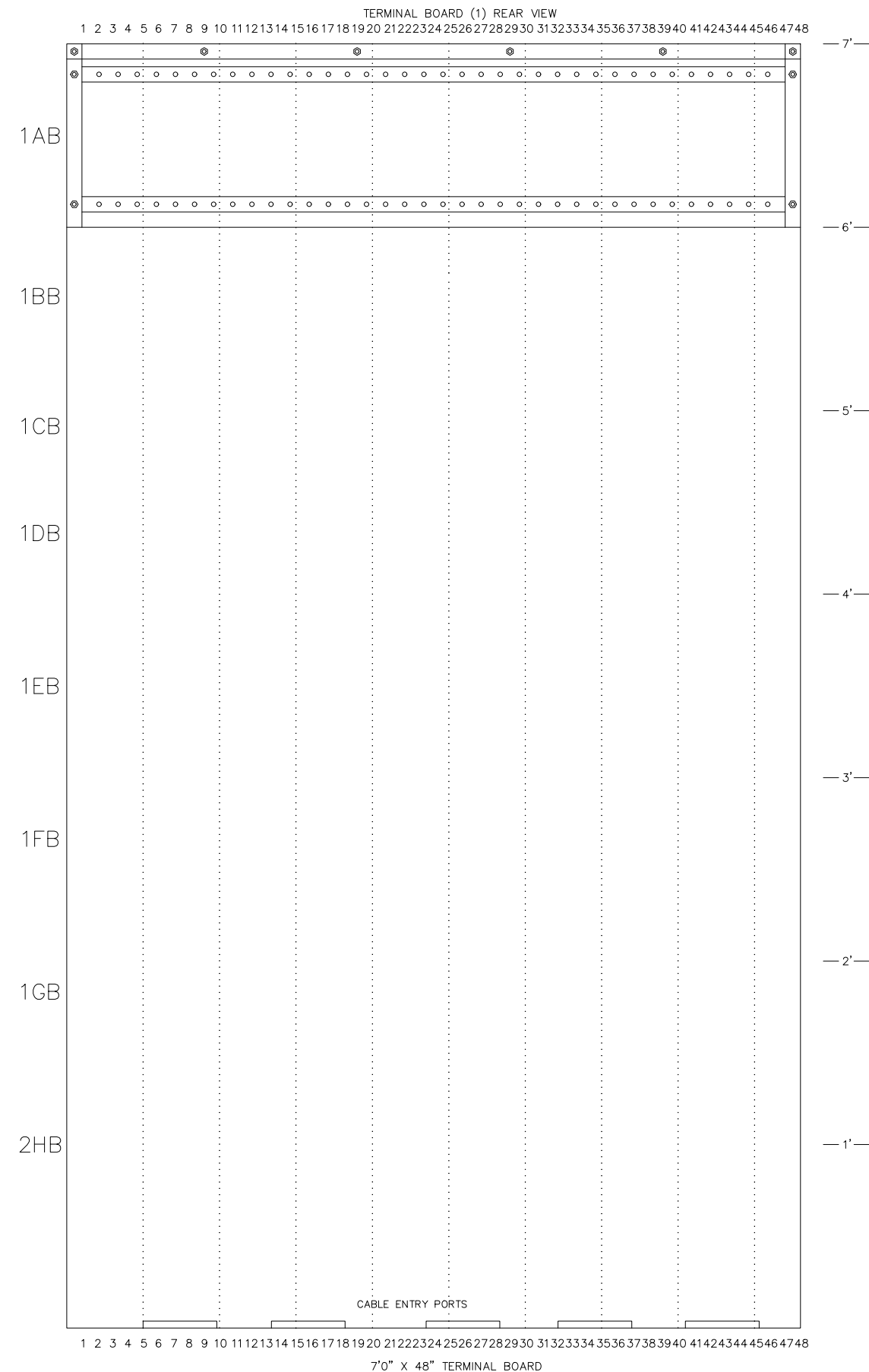
COLORED PLANS

RED = \ominus = IN
 YELLOW = \otimes = OUT

REVISIONS

DESIGNED ANDERSON 06-29-21
 DETECTOR SITE
 XRL/JDS SEQ # A0002

The ALASKA RAILROAD CORPORATION	
SIGNAL ENGINEERING	P.O. BOX 107500 , ANCHORAGE , ALASKA 99510-7500
ANDERSON DETECTOR SITE	
M.P. 395.16	
CONSOLIDATED DETECTOR LOCATION	
DRAWN: XRL	DWG NO. 039516D
DATE: 06-29-21	13 SHEET OF 22



****ALL NEW***

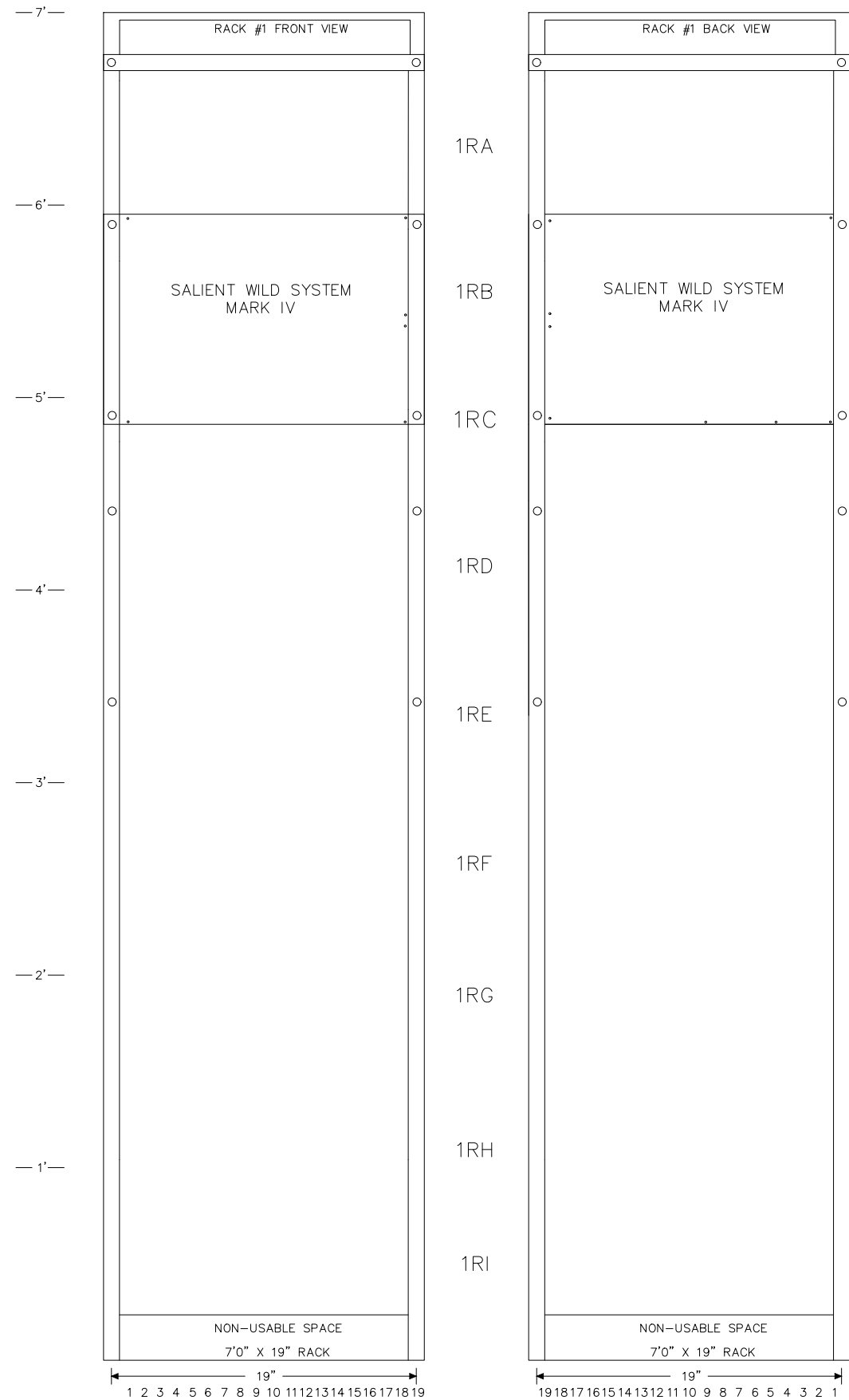
COLORED PLANS

RED = ⊕ = IN
 YELLOW = ⊗ = OUT

REVISIONS

DESIGNED ANDERSON 06-29-21
 DETECTOR SITE
 XRL/JDS SEQ # A0002

<i>The ALASKA RAILROAD CORPORATION</i>	
SIGNAL ENGINEERING	P.O. BOX 107500 , ANCHORAGE , ALASKA 99510-7500
ANDERSON DETECTOR SITE	
M.P. 395.16	
CONSOLIDATED DETECTOR LOCATION	
DRAWN: XRL	DWG NO. 039516D
DATE: 06-29-21	14 SHEET OF 22



**ALL NEW*

COLORED PLANS

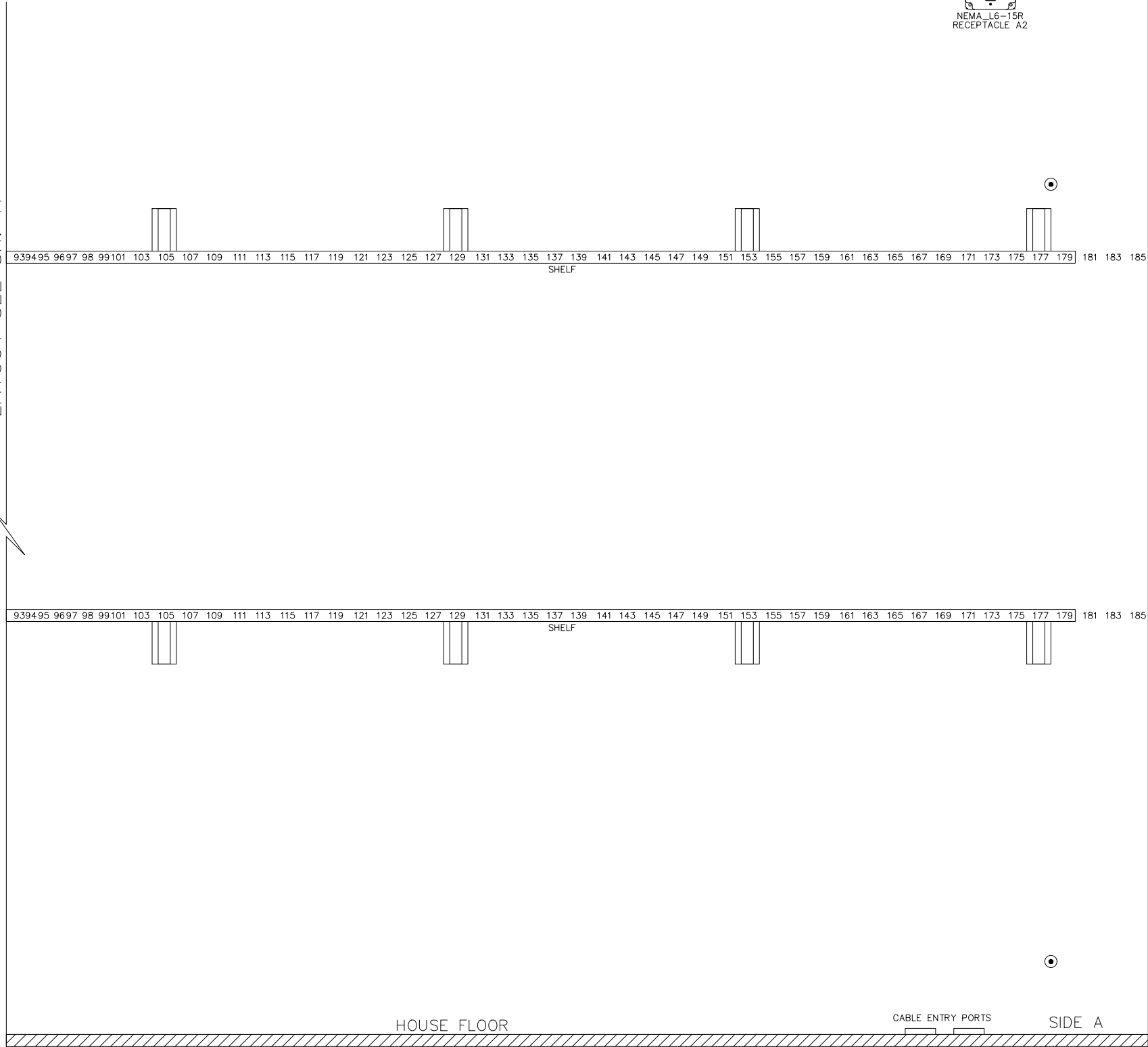
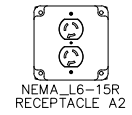
RED = \ominus = IN
 YELLOW = \otimes = OUT

REVISIONS

DESIGNED ANDERSON 06-29-21
 DETECTOR SITE
 XRL/JDS SEQ # A0002

SIGNAL ENGINEERING		The ALASKA RAILROAD CORPORATION P.O. BOX 107500 , ANCHORAGE , ALASKA 99510-7500	
ANDERSON DETECTOR SITE			
M.P. 395.16			
CONSOLIDATED DETECTOR LOCATION			
DRAWN: XRL	DWG NO. 039516D	15 SHEET OF 22	
DATE: 06-29-21			

FOR CONTINUATION OF WALL "A"
LAYOUT SEE SH. 17



****ALL NEW***

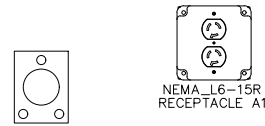
COLORED PLANS

RED = \ominus = IN
 YELLOW = \otimes = OUT

REVISIONS

DESIGNED ANDERSON 06-29-21
 DETECTOR SITE
 XRL/JDS SEQ # A0002

The ALASKA RAILROAD CORPORATION SIGNAL ENGINEERING P.O. BOX 107500 , ANCHORAGE , ALASKA 99510-7500	
ANDERSON DETECTOR SITE M.P. 395.16 CONSOLIDATED DETECTOR LOCATION	
DRAWN: XRL DATE: 06-29-21	DWG NO. 039516D
16 SHEET OF 22	



AA

AB

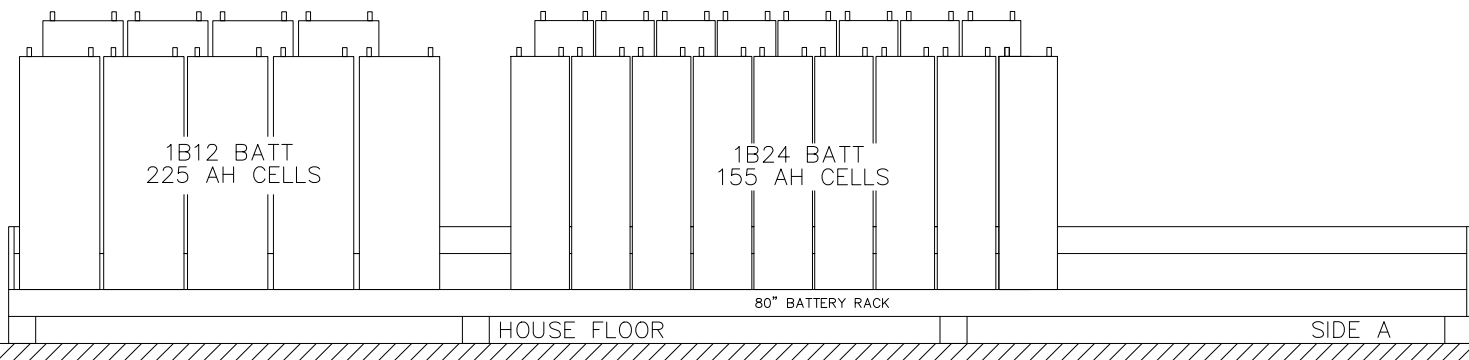
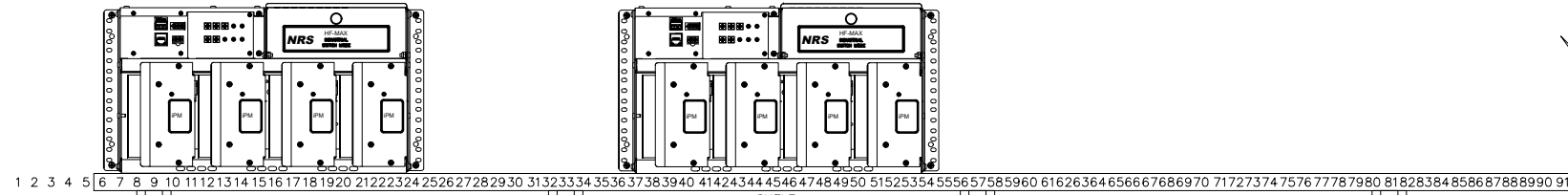
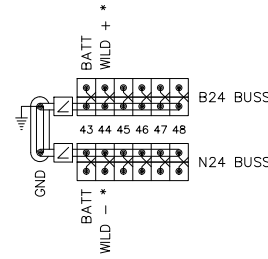
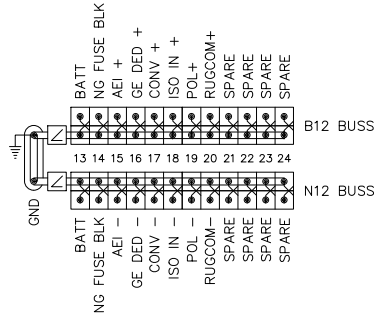
WALL "D"

AC

1 2 3 4 5 6 7 8 9 10 11 12 13 14 15 16 17 18 19 20 21 22 23 24 25 26 27 28 29 30 31 32 33 34 35 36 37 38 39 40 41 42 43 44 45 46 47 48 49 50 51 52 53 54 55 56 57 58 59 60 61 62 63 64 65 66 67 68 69 70 71 72 73 74 75 76 77 78 79 80 81 82 83 84 85 86 87 88 89 90 91

SHELF

*FIELD TO PROVIDE ACTUAL LOCATION



—7'—
—6'—
—5'—
—4'—
—3'—
—2'—
—1'—

FOR CONTINUATION OF WALL "A"
LAYOUT SEE SH.16

**ALL NEW*

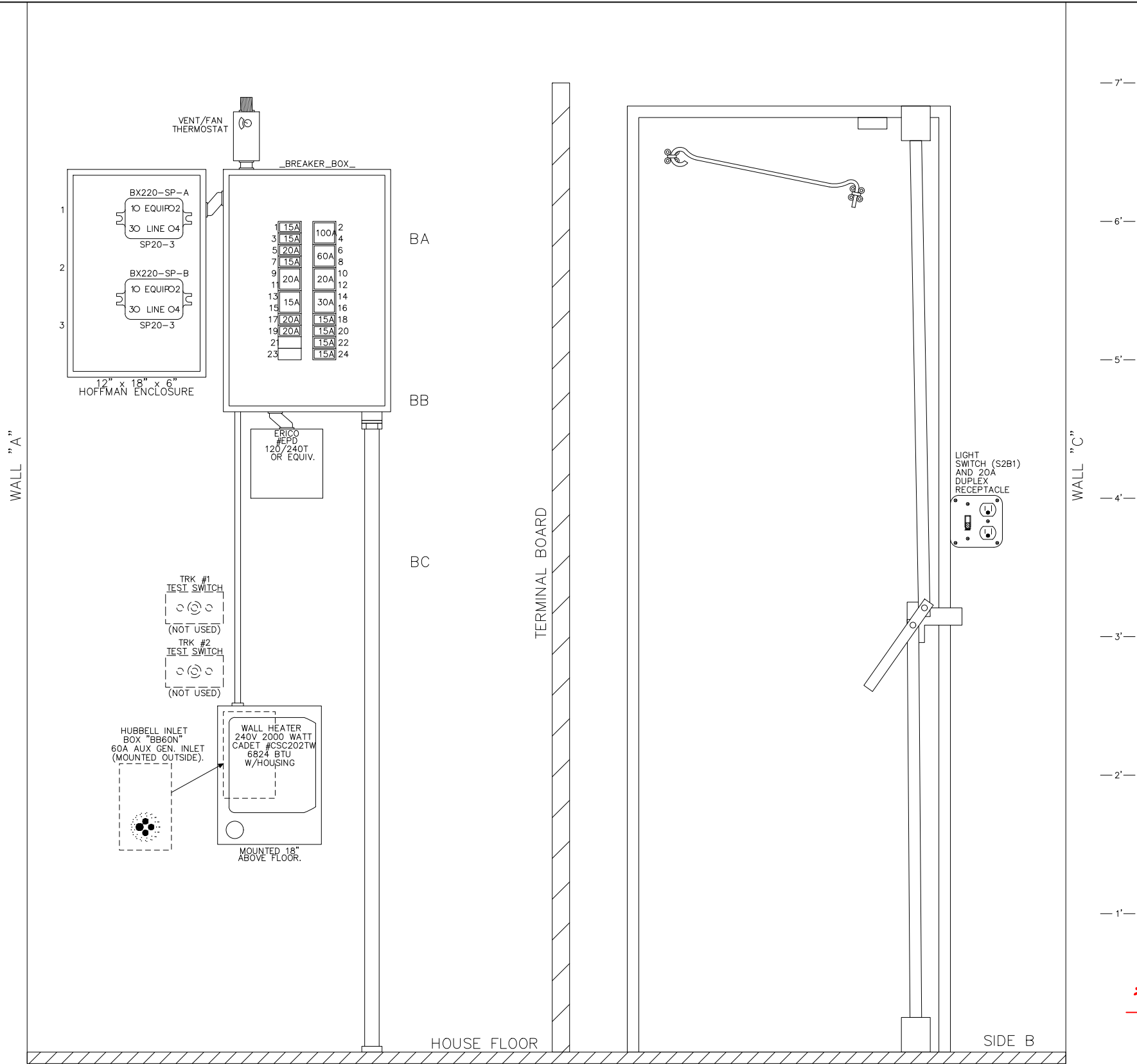
COLORED PLANS

RED = ⊖ = IN
YELLOW = ⊗ = OUT

REVISIONS

DESIGNED 06-29-21
ANDERSON
DETECTOR SITE
XRL/JDS SEQ # A0002

The ALASKA RAILROAD CORPORATION	
SIGNAL ENGINEERING P.O. BOX 107500 , ANCHORAGE , ALASKA 99510-7500	
ANDERSON DETECTOR SITE	
M.P. 395.16	
CONSOLIDATED DETECTOR LOCATION	
DRAWN: XRL	DWG NO. 039516D
DATE: 06-29-21	17 SHEET OF 22



****ALL NEW***

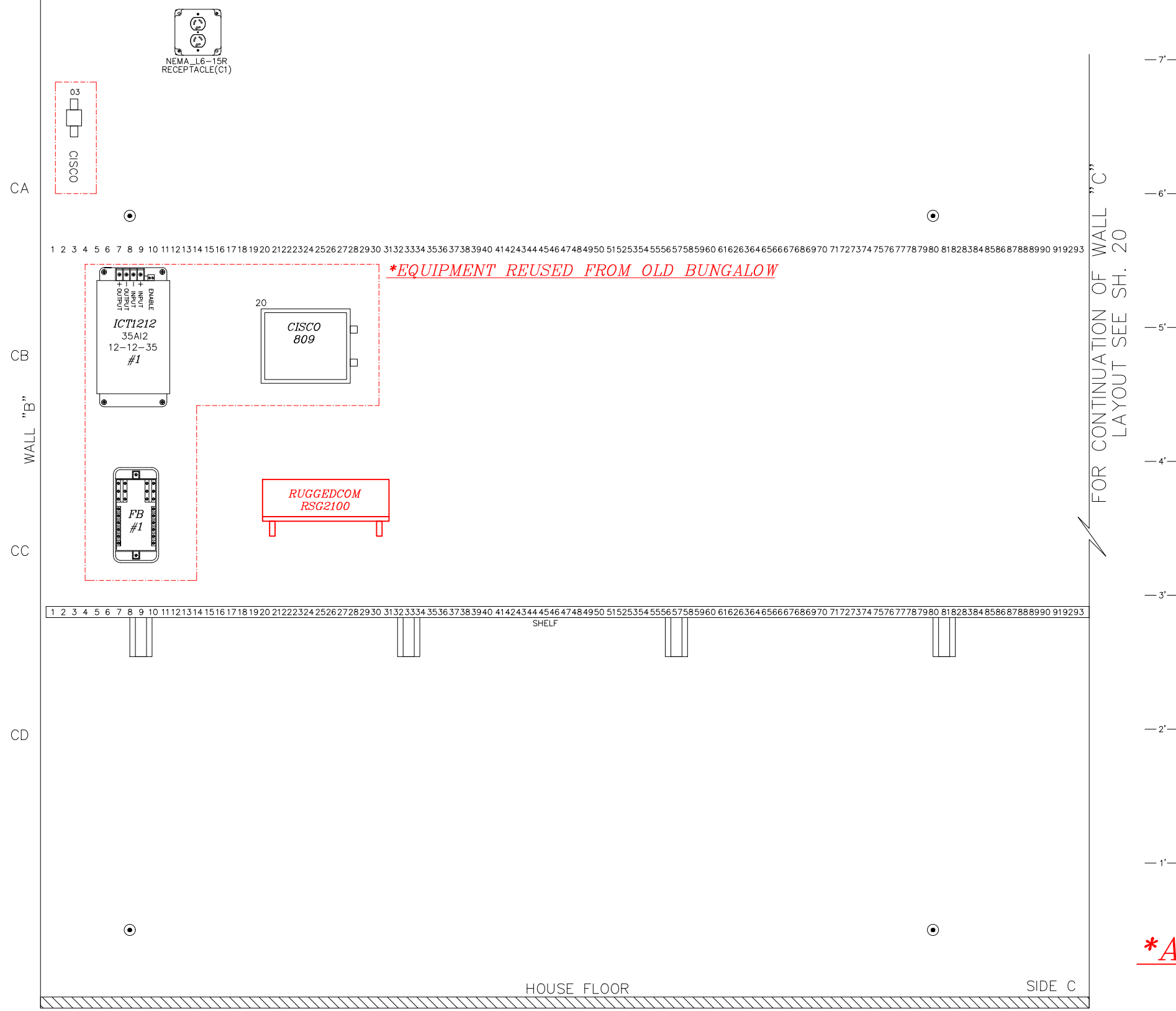
COLORED PLANS

RED = ⊕ = IN
 YELLOW = ⊗ = OUT

REVISIONS

DESIGNED ANDERSON 06-29-21
 DETECTOR SITE
 XRL/JDS SEQ # A0002

The ALASKA RAILROAD CORPORATION	
SIGNAL ENGINEERING	P.O. BOX 107500 , ANCHORAGE , ALASKA 99510-7500
ANDERSON DETECTOR SITE	
M.P. 395.16	
CONSOLIDATED DETECTOR LOCATION	
DRAWN: XRL	DWG NO. 039516D
DATE: 06-29-21	18 SHEET OF 22



COLORED PLANS

RED = \ominus = IN
 YELLOW = \otimes = OUT

REVISIONS

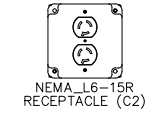
DESIGNED ANDERSON 06-29-21
 DETECTOR SITE
 XRL/JDS SEQ # A0002

<i>The ALASKA RAILROAD CORPORATION</i>	
SIGNAL ENGINEERING	P.O. BOX 107500 , ANCHORAGE , ALASKA 99510-7500
ANDERSON DETECTOR SITE	
M.P. 395.16	
CONSOLIDATED DETECTOR LOCATION	
DRAWN: XRL	DWG NO. 039516D
DATE: 06-29-21	19 SHEET OF 22

FOR CONTINUATION OF WALL "C"
LAYOUT SEE SH. 19

9596979899 101 103 105 107 109 111 113 115 117 119 121 123 125 127 129 131 133 135 137 139 141 143 145 147 149 151 153 155 157 159 161 163 165 167 169 171 173 175 177 179 181 183 185

9596979899 101 103 105 107 109 111 113 115 117 119 121 123 125 127 129 131 133 135 137 139 141 143 145 147 149 151 153 155 177 179 181 183 185



—7'—

CA —6'—

—5'—

CB

WALL "D"
—4'—

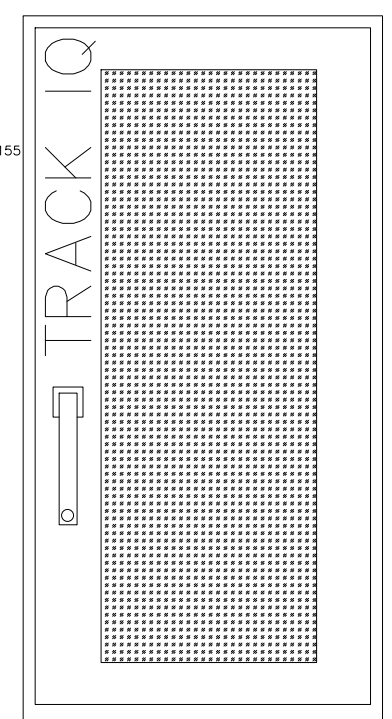
CC

—3'—

—2'—

—1'—

****ALL NEW***



HOUSE FLOOR

CABLE ENTRY PORTS

SIDE C

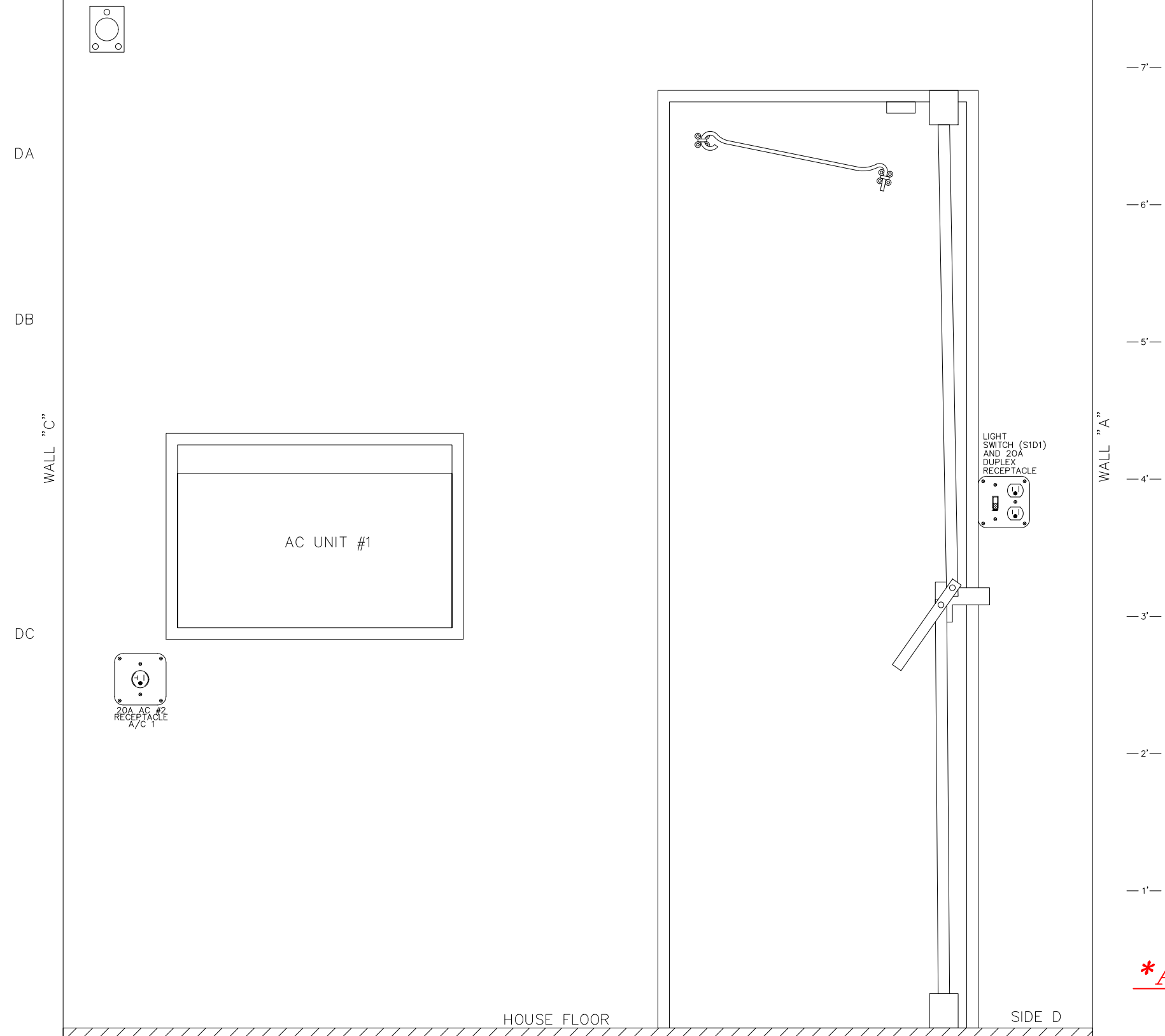
COLORED PLANS

RED = ⊕ = IN
YELLOW = ⊗ = OUT

REVISIONS

DESIGNED ANDERSON 06-29-21
DETECTOR SITE
XRL/JDS SEQ # A0002

The ALASKA RAILROAD CORPORATION	
SIGNAL ENGINEERING	P.O. BOX 107500 , ANCHORAGE , ALASKA 99510-7500
ANDERSON DETECTOR SITE	
M.P. 395.16	
CONSOLIDATED DETECTOR LOCATION	
DRAWN: XRL	DWG NO. 039516D
DATE: 06-29-21	20 SHEET OF 22



****ALL NEW***

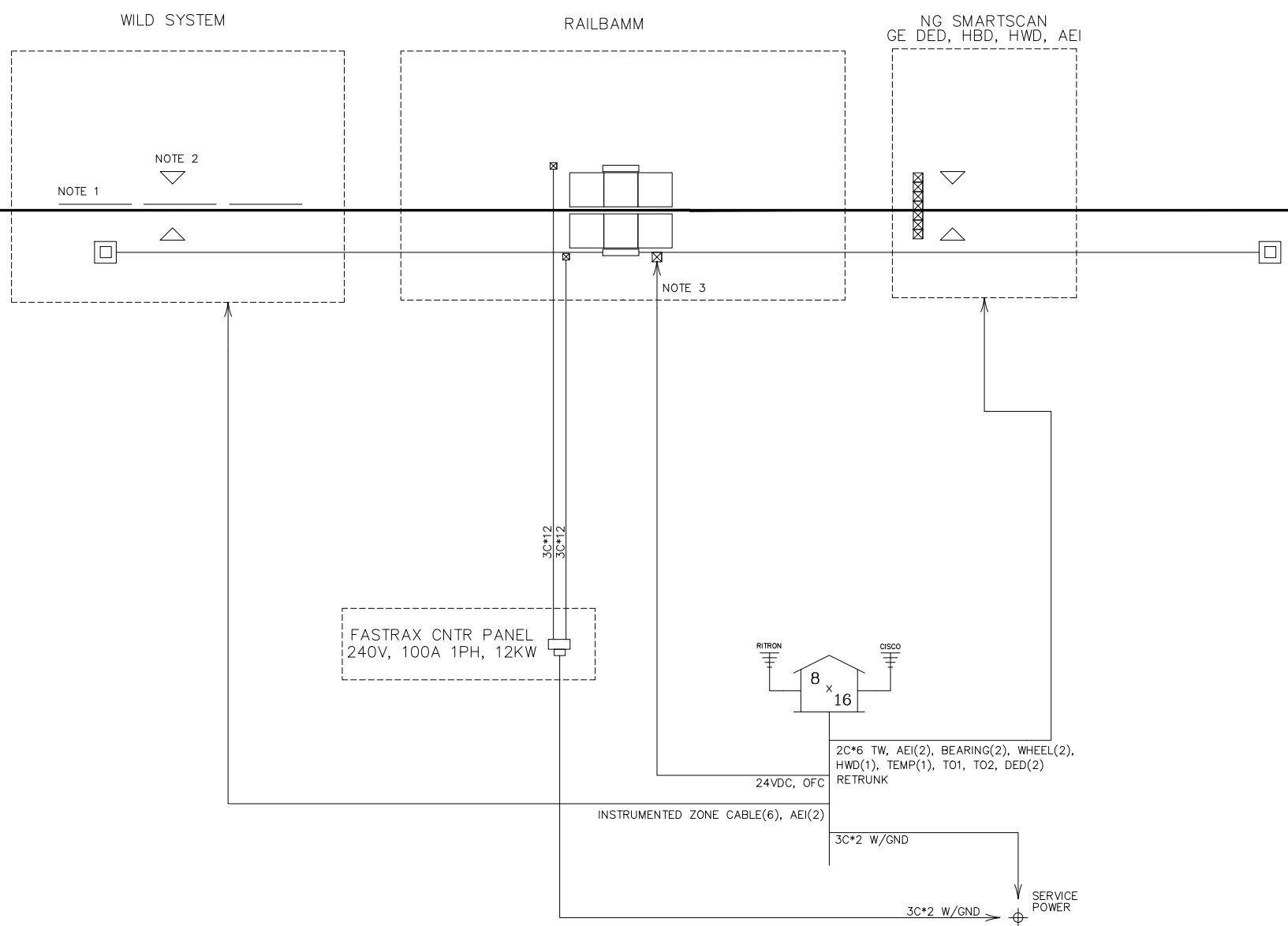
COLORED PLANS

RED = \ominus = IN
 YELLOW = \otimes = OUT

REVISIONS

DESIGNED ANDERSON 06-29-21
 DETECTOR SITE
 XRL/JDS SEQ # A0002

The ALASKA RAILROAD CORPORATION	
SIGNAL ENGINEERING	P.O. BOX 107500 , ANCHORAGE , ALASKA 99510-7500
ANDERSON DETECTOR SITE	
M.P. 395.16	
CONSOLIDATED DETECTOR LOCATION	
DRAWN: XRL	DWG NO. 039516D
DATE: 06-29-21	21 SHEET OF 22



****ALL NEW***

- NOTES:
1. CONDUIT UTILIZED FOR WILD CABLES BETWEEN BUNGALOW AND TRACK MUST BE 4" OR GREATER AND ALLOW FOR 24" BEND RADIUS MIN WHERE CABLE BENDS ARE REQUIRED.
 2. CONDUIT UTILIZED FOR WILD TAG READERS BETWEEN BUNGALOW AND TRACK MUST BE 3" OR GREATER AND ALLOW FOR 24" BEND RADIUS MIN WHERE CABLE BENDS ARE REQUIRED.
 3. CONDUIT UTILIZED FOR RAILBAM BETWEEN BUNGALOW AND TRACK MUST BE 4" SCH 80 PVC.

COLORED PLANS
 RED = ⊕ = IN
 YELLOW = ⊗ = OUT

REVISIONS

DESIGNED ANDERSON 06-29-21
 DETECTOR SITE
 XRL/JDS SEQ # A0002

The ALASKA RAILROAD CORPORATION	
SIGNAL ENGINEERING	
P.O. BOX 107500 , ANCHORAGE , ALASKA 99510-7500	
ANDERSON DETECTOR SITE	
M.P. 395.16	
CONSOLIDATED DETECTOR LOCATION	
DRAWN: XRL	DWG NO. 039516D
DATE: 06-29-21	22 SHEET OF 22