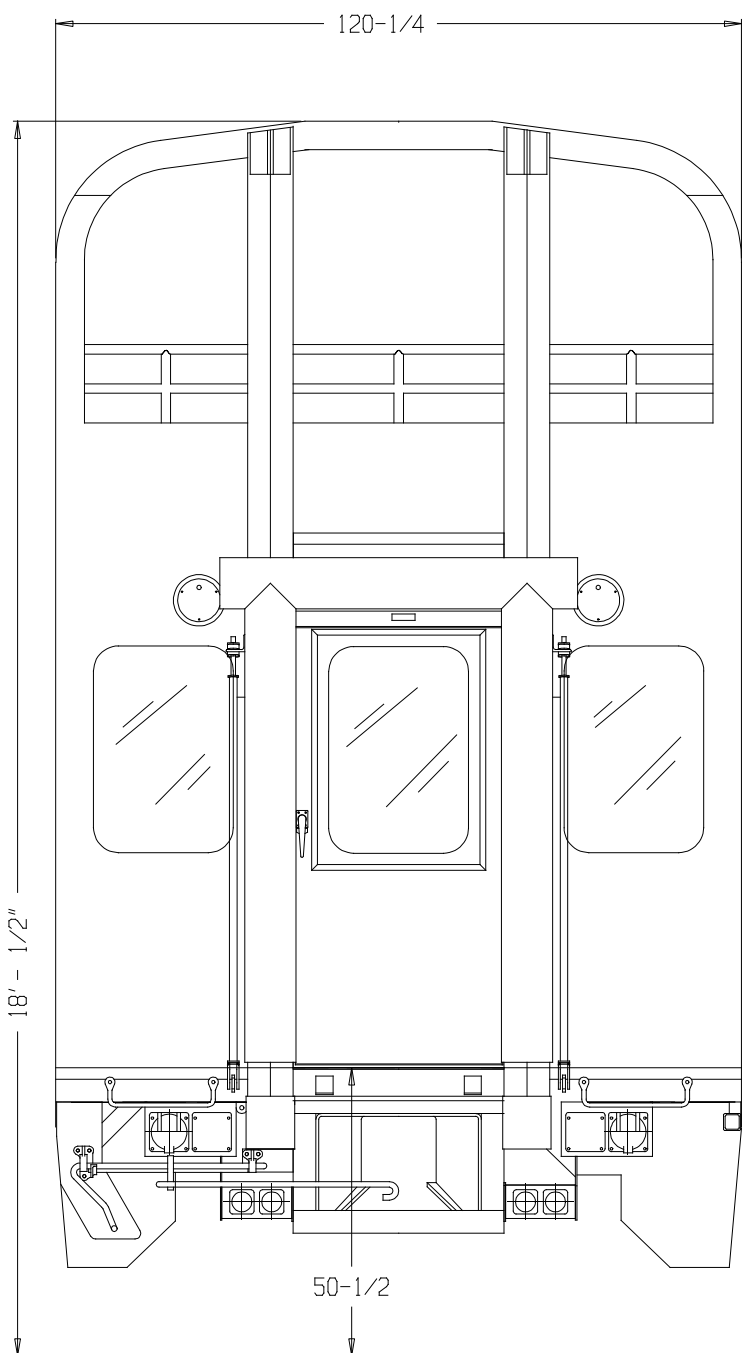
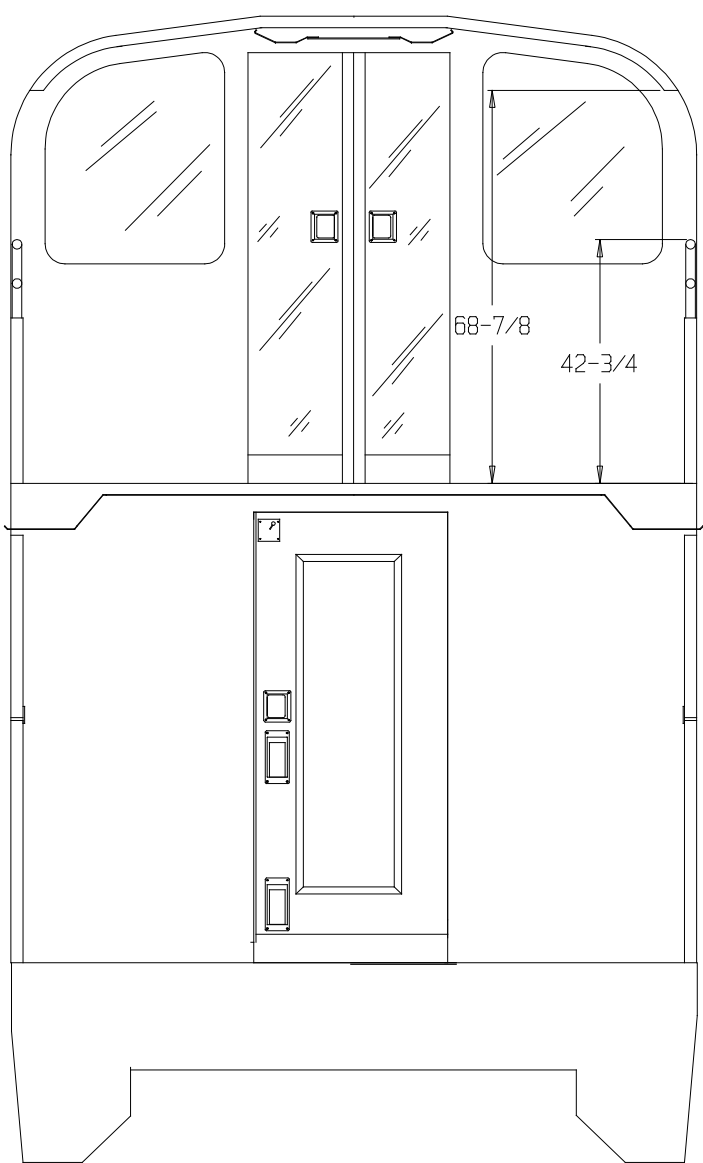


THE INFORMATION ON THIS DOCUMENT IS PROPRIETARY. RECIPIENT BY ITS RECEIPT AGREES TO KEEP THIS DATA CONFIDENTIAL IN ALL RESPECTS. INFORMATION ON THIS DOCUMENT SHALL NOT BE COPIED NOR REPRODUCED IN ANY MANNER, NOR DISCLOSED ORALLY OR IN WRITING TO ANY THIRD PARTY, WITHOUT OUR EXPRESS WRITTEN AUTHORIZATION.

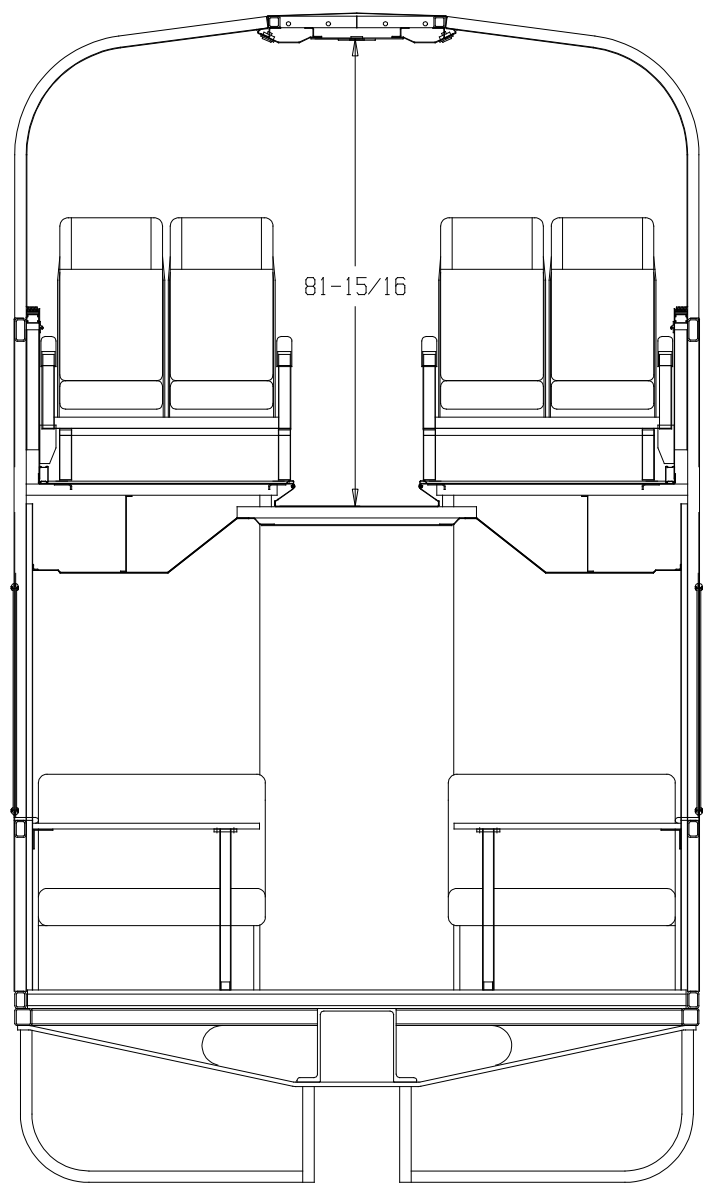
REV	DESCRIPTION	INIT	DATE
B	INCCORP MAY 10-11 MTG COMMENTS	SPF	12MAY04



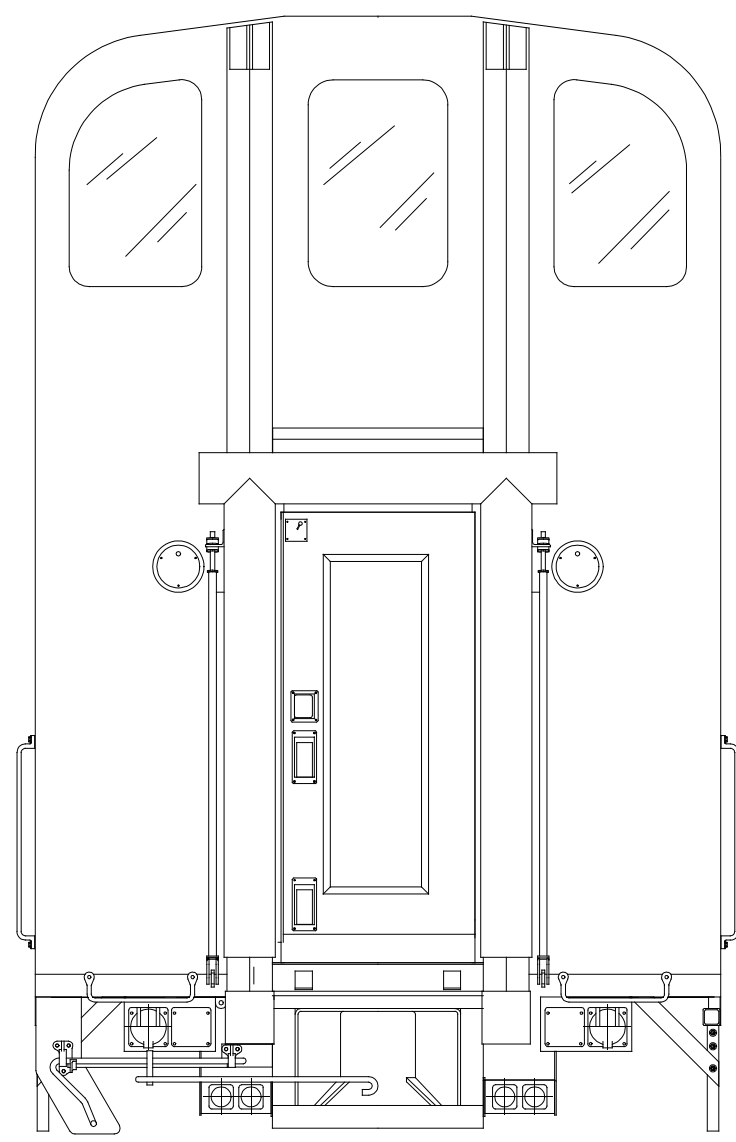
B-END OF CAR



SECTION VIEW AT VESTIBULE



SECTION THRU DINING ROOM



A-END OF CAR

TOP OF RAIL

COLORADO RAILCAR MFG LLC
 FT LUPTON, COLORADO 303/857-1066

PROJECT: ALASKA 2004

RAILCAR(S): 651, 652

SCALE (D): 3/4"=1'

DRAFTED BY: SPF

CHECKED BY:

APPROVED BY:

MODEL: ---

NEXT: - WBS: -- **AR1A00GA0103B**

ENTRY STAIR SUB-ASSEMBLY

REV	ITEM	QTY	PART NO.	LBS	*	DESCRIPTION	RAW MAT	REQ / PO #
	SA	-	7401154F			ENTRY STAIR SUB-ASSEMBLY		
	1	1	7401152F	73.0	*	PANEL,SIDE,ENTRY STAIR,RIGHT SIDE, AR1A02ST6002		
	2	1	7401153F	73.0	*	PANEL,SIDE,ENTRY STAIR,LEFT SIDE, AR1A02ST6002		
	3	4	2602304F	21.9		1/4" STAINLESS STEEL PLATE, 9 3/8" X 33", T304		
C	4	4	7401225F	36.0		TREAD SUB-ASSY - PER DWG AR1A02ST6061		
C	4	4	7401225P	36.0		GALVANIZED - TREAD SUB-ASSY - PER DWG AR1A02ST6061		
C	5					ITEM DELETED		
C	6					ITEM DELETED		
C	7					ITEM DELETED		
C	8	8				ANGLE,STAINLESS STEEL,1"X1"X1/8",20' LONG - CUT TO 8 15/16" LONG	2630001S	
C	9	16	4631004S			WASHER,FLAT,SAE,ZINC PLATED,1/4"		
C	10	16	4635004S			WASHER,SPRING LOCK,HELICAL,REGULAR,ZINC PLATED, 1/4"		
C	11	16	4624016S			NUT,HEX,GRADE 5,ZINC PLATED,1/4"-20		
						THERE ARE 2 SUB-ASSEMBLIES PER RAILCAR		

TOTAL WEIGHT = 521.6

(TOTAL WEIGHT IS PER DRAWING)

APPROVED

4.8.08

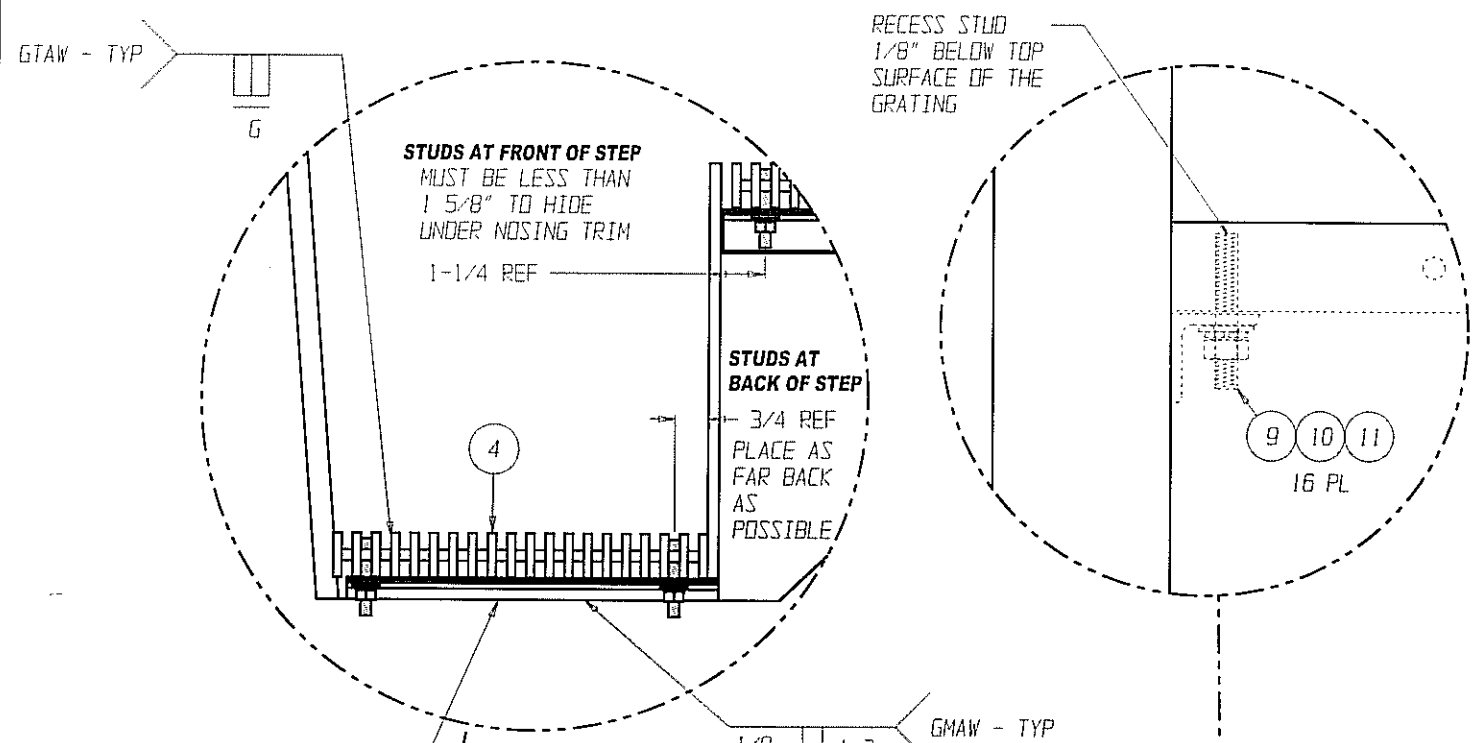
THE INFORMATION ON THIS DOCUMENT IS PROPRIETARY. RECEIPT BY ITS RECEIPT AGREES TO KEEP THIS DATA CONFIDENTIAL IN ALL RESPECTS. INFORMATION ON THIS DOCUMENT SHALL NOT BE COPIED NOR REPRODUCED IN ANY MANNER, NOR DISCLOSED ORALLY OR IN WRITING TO ANY THIRD PARTY, WITHOUT OUR EXPRESS WRITTEN AUTHORIZATION.

REV	DESCRIPTION	INIT	DATE
A	PRODUCTION RELEASE	BHH	26AUG04
B	ECR'S 1923, 1070 TO AS-BUILT	SPF	22OCT07
C	ECR 2557 - REVISE GRATE MAT'L	SPF	04APR08

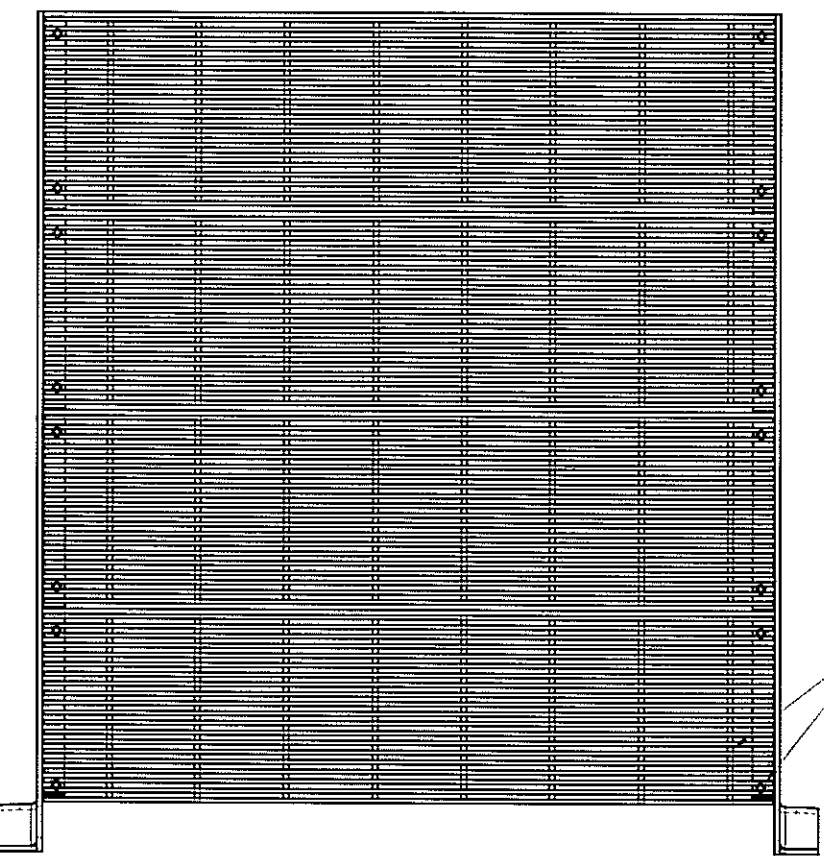
GRATING IS PLAIN STEEL, STUDS ARE STAINLESS.

1. GRM CUT GRATING TO WIDTH.
2. GRATING THEN IS SENT OUT TO VENDOR TO CUT TO LENGTH.
3. GRATING THEN FIT UP IN STAIR ASSY, STUDS LAID OUT & WELDED, HOLES DRILLED IN ANGLES.
4. GRATING SUB-ASSYS W/ STUDS SENT OUT FOR PLATING. WANT HEAVY DIPPED GALV. COATING, MASK STUD THREADS.
5. AFTER PLATING, INSTALL GRATING TO THE ANGLES WITH HARDWARE.

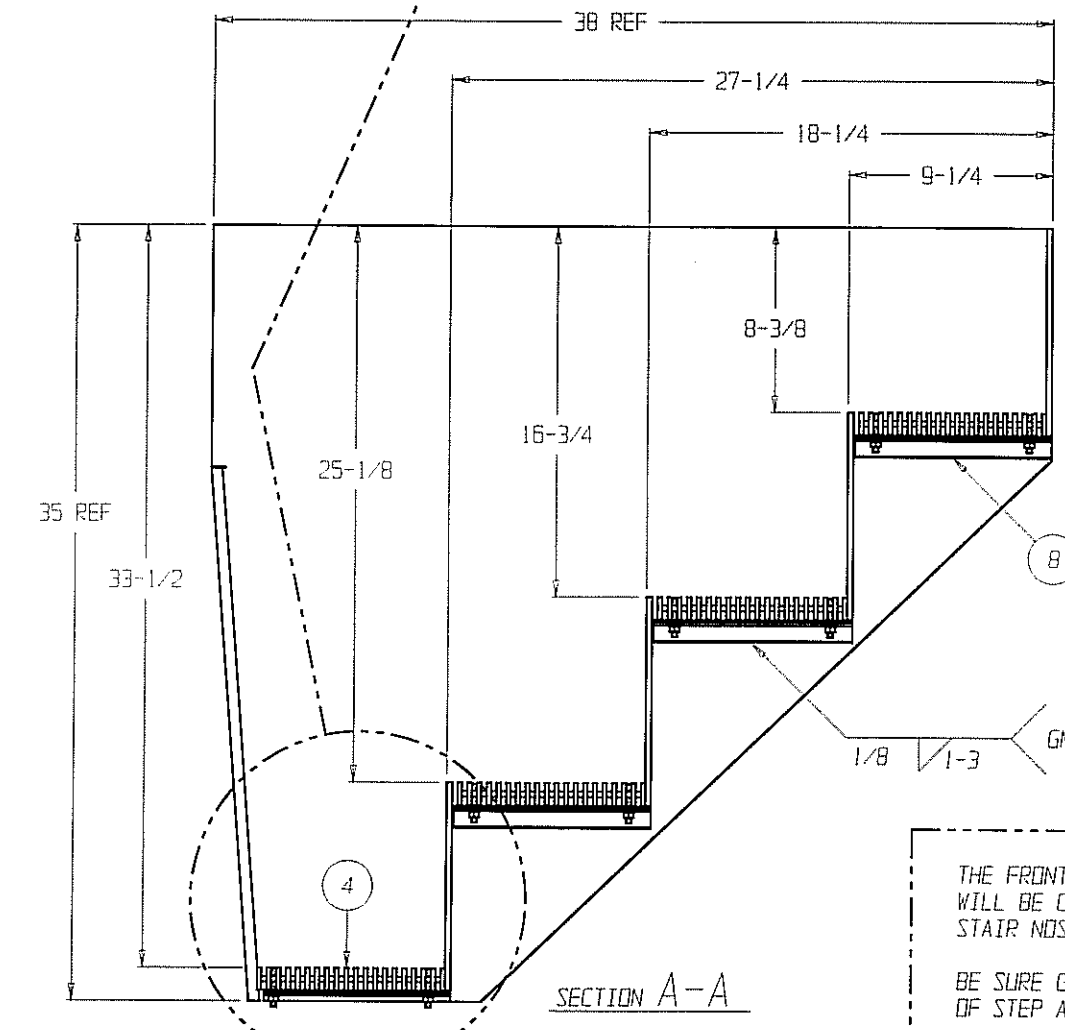
BE SURE THAT THE SUPPORT ROD IN THE GRATING DOES NOT PREVENT THE STUD AND ANGLE INTERFACE



TRIM THE TWO ANGLES UNDER THE BOTTOM TREAD FLUSH W/ BOTTOM OF THE STAIR SIDE PLATES

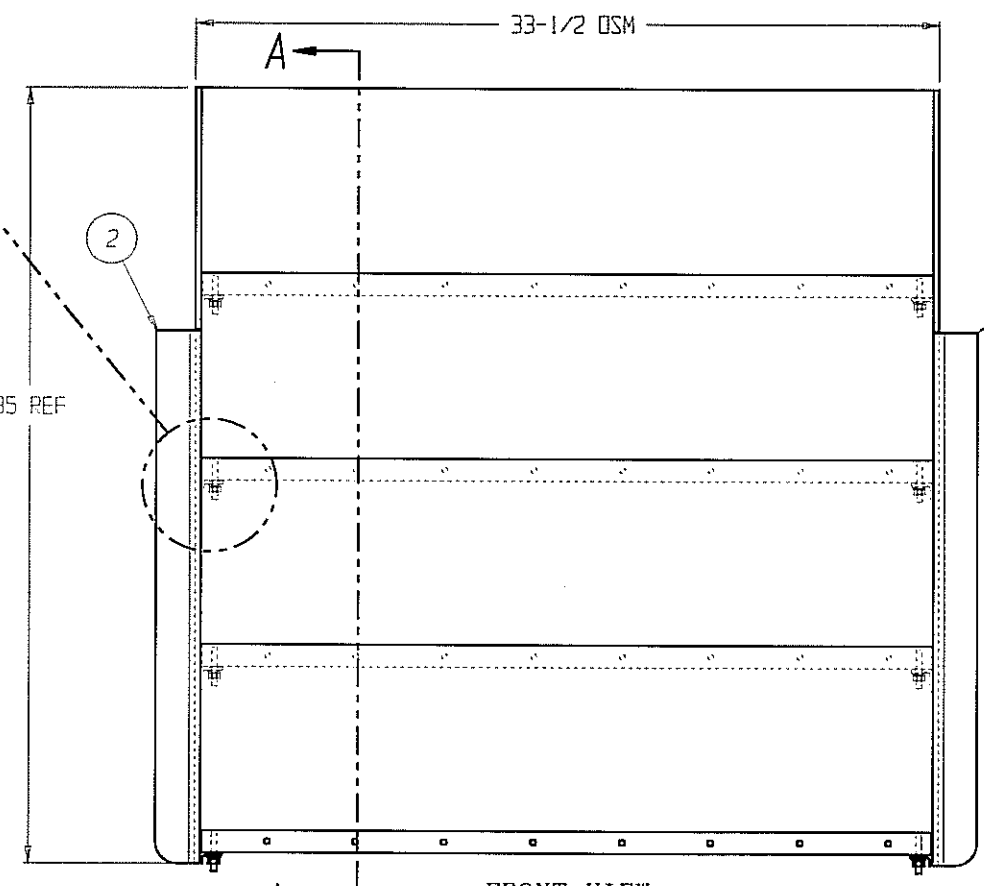


TOP VIEW
PART NO. 7401154F



SECTION A-A

THE FRONT OF EACH STEP WILL BE COVERED WITH STAIR NOSING EXTRUSION
BE SURE GAPS AT BACK OF STEP ARE CONSISTENT



FRONT VIEW
PART NO. 7401154F

APPROVED

NOTES:

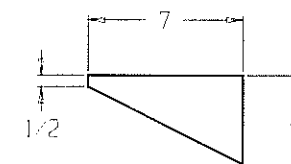
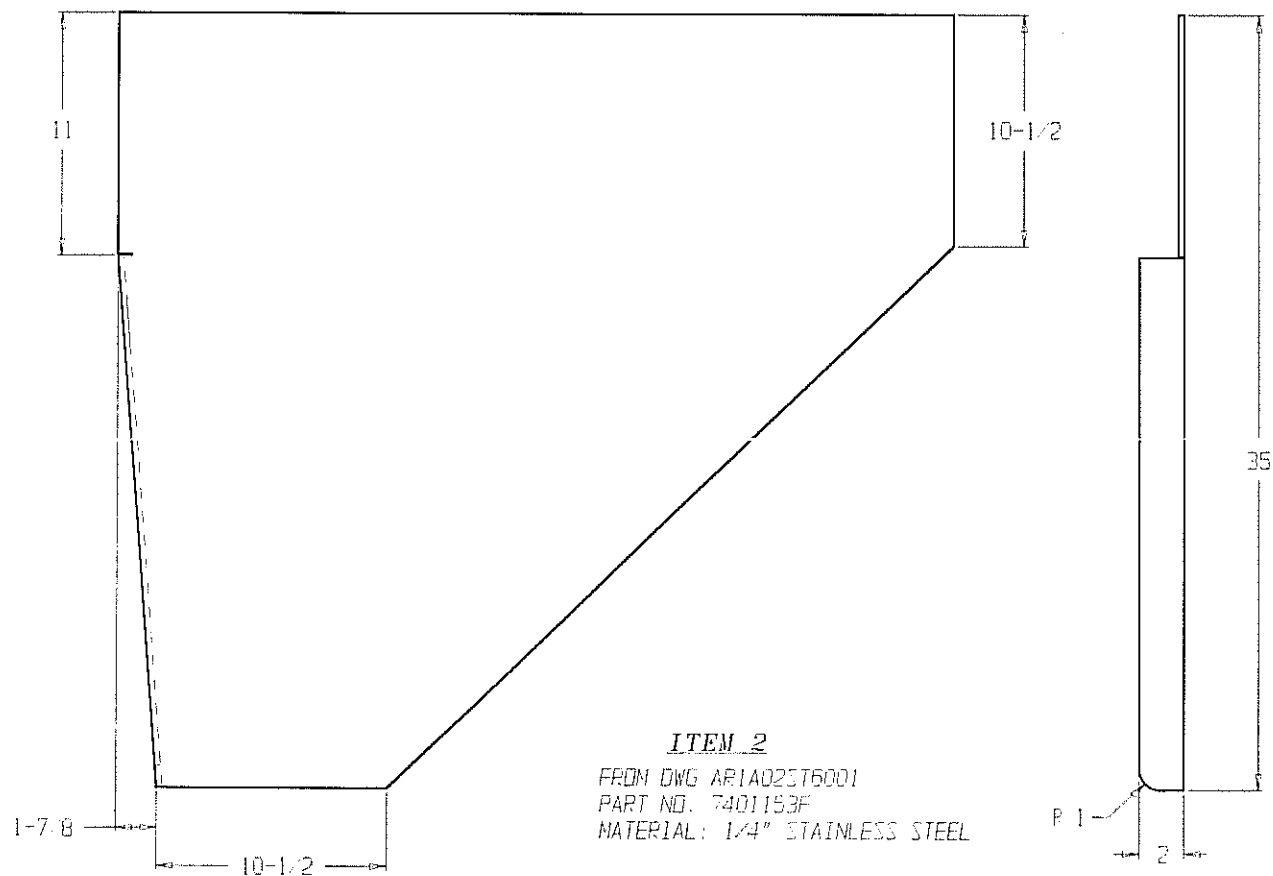
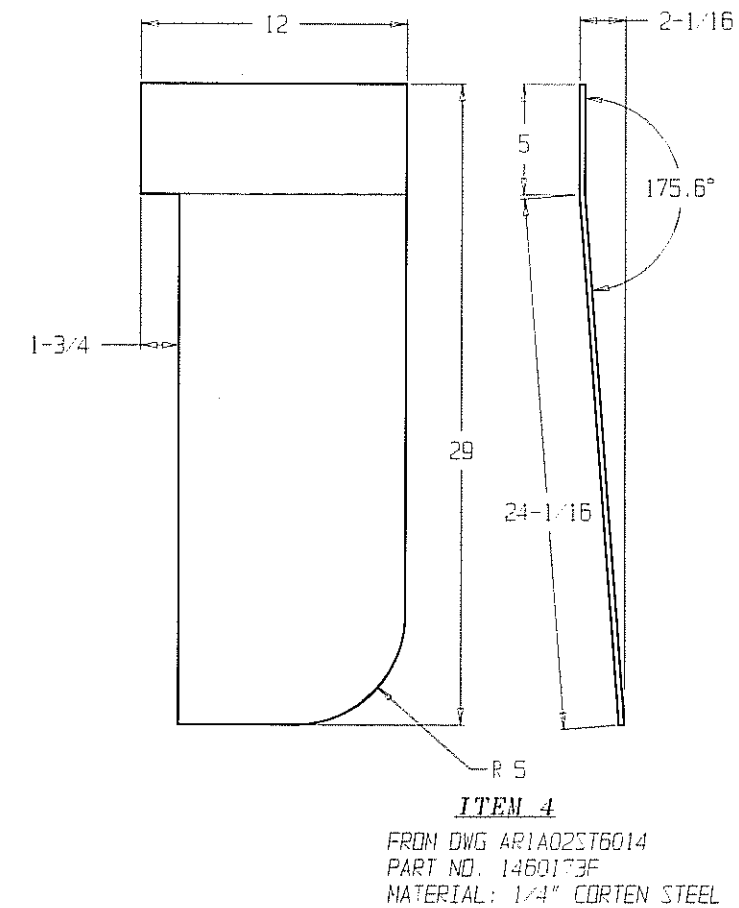
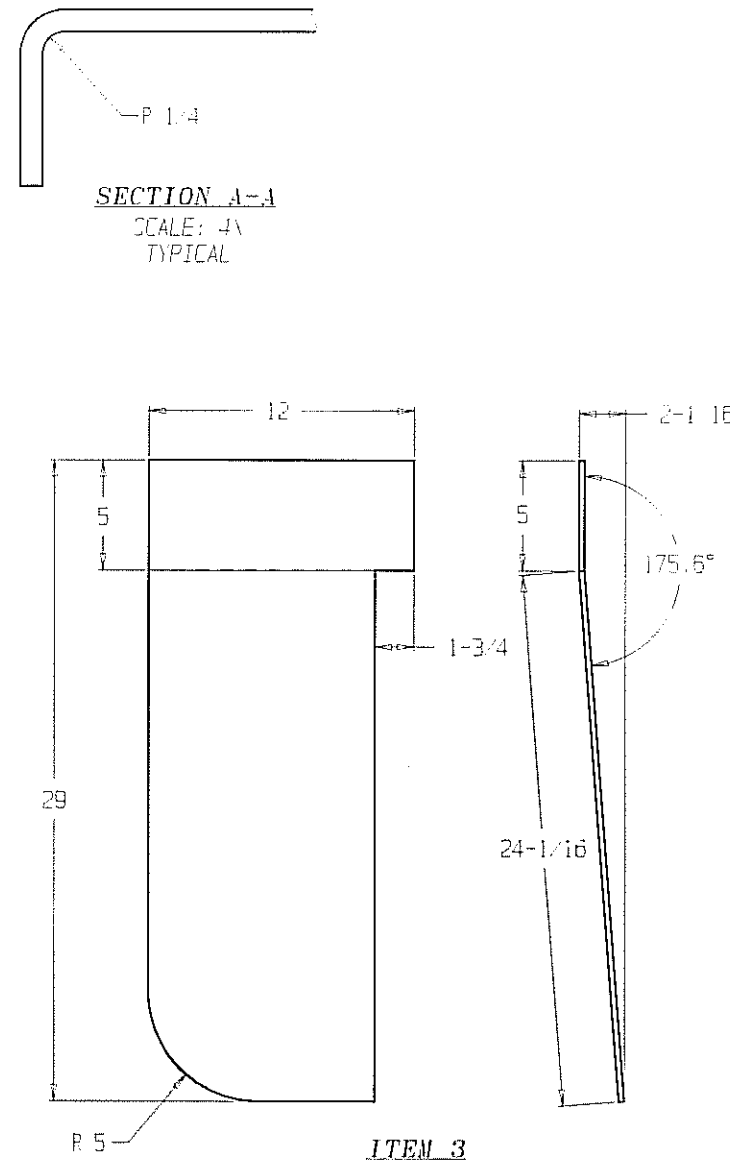
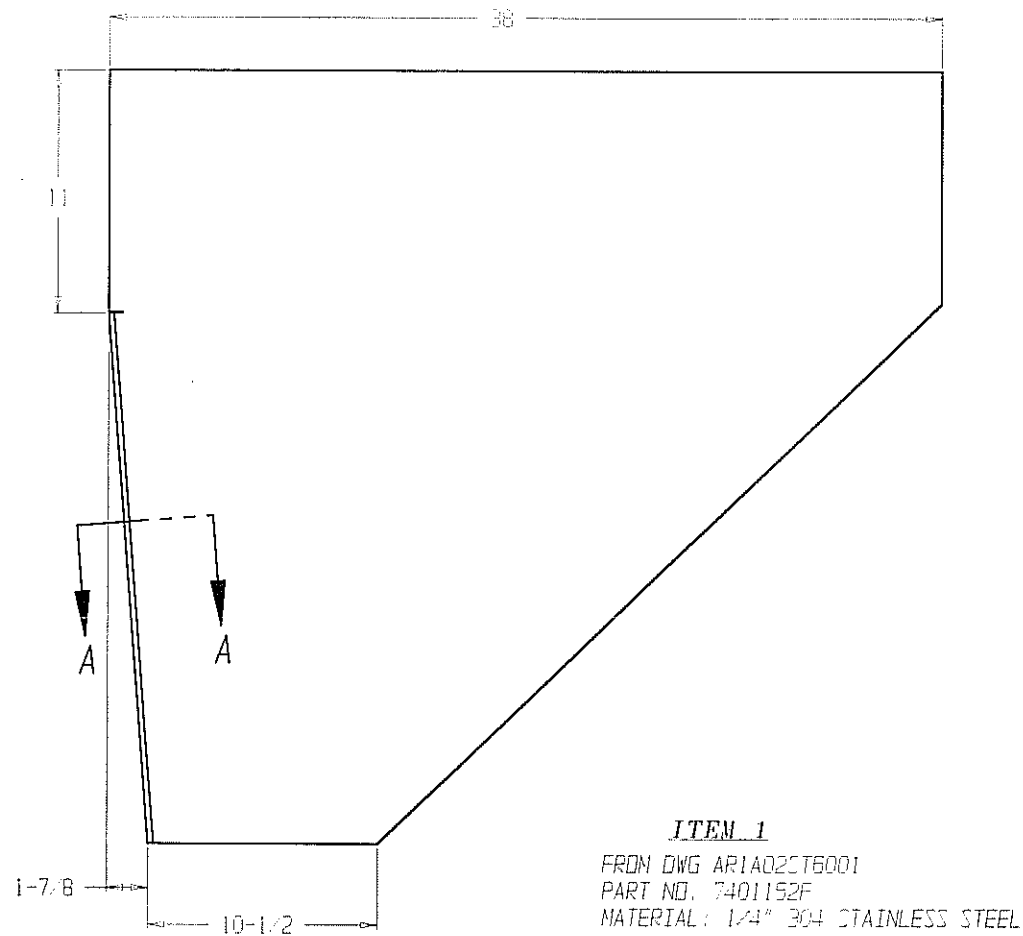
1. FOR BILL OF MATERIALS SEE AR1A02ST6001
2. DO NOT SCALE DRAWING

DIMENSION TOLERANCE = $\pm 1/16$ "
ANGULAR TOLERANCE = $\pm 1^\circ$
DRILLED HOLE TOLERANCE = $\pm \phi 1/64$ "
UNLESS OTHERWISE SPECIFIED

COLORADO RAILCAR MFG LLC FT LUPTON, COLORADO 303/857-1066	
PROJECT: ALASKA RR 2008	
RAILCAR(S): TYPE 1	SCALE (D): 1/4"=1"
ENTRY STAIR SUB-ASSEMBLY	DRAFTED BY: BHH
	CHECKED BY: <i>[Signature]</i>
	APPROVED BY: <i>[Signature]</i>
	MODEL: ---

THE INFORMATION ON THIS DOCUMENT IS PROPRIETARY. RECIPIENT BY ITS RECEIPT AGREES TO KEEP THIS DATA CONFIDENTIAL IN ALL RESPECTS. INFORMATION ON THIS DOCUMENT SHALL NOT BE COPIED NOR REPRODUCED IN ANY MANNER, NOR DISCLOSED ORALLY OR IN WRITING TO ANY THIRD PARTY, WITHOUT OUR EXPRESS WRITTEN AUTHORIZATION.

REV	DESCRIPTION	INIT	DATE
A	PRODUCTION RELEASE	BHH	26AUG04
E	CHANGE RADIUS TO 1/4 IN SEC A-A	DRZ	21JUN06



NOTES:

- FOR BILL OF MATERIALS SEE ARI1A02ST6001, 6014
- DO NOT SCALE DRAWING

DIMENSION TOLERANCE = $\pm 1/16"$
ANGULAR TOLERANCE = $\pm 1^\circ$
DRILLED HOLE TOLERANCE = $\pm \text{Ø } 1/64"$
UNLESS OTHERWISE SPECIFIED

COLORADO RAILCAR MFG LLC FT LUPTON, COLORADO 303/857-1066	
PROJECT: ALASKA RR 2006	
RAILCAR: TYPE 1	SCALE (D): 1/4"=1"
SIDE ENTRY STAIR ITEM FABRICATION	
DRAFTED BY: BHH CHECKED BY: <i>[Signature]</i> APPROVED BY: <i>[Signature]</i> MODEL: ARI1A19EA6100	
NEXT: -	WBS: 02-6 DWG#: ARI1A02ST6002B

APPROVED

SIDE ENTRY STAIR INSTALLATION

REV	ITEM	QTY	PART NO.	LBS	*	DESCRIPTION	RAW MAT	REQ / PO #
	SA	-				SIDE ENTRY STAIR INSTALLATION		
	1	2	7401154F	389.0	*	SUB-ASSEMBLY,ENTRY STAIR, AR1A02ST6001		
B	2					ITEM DELETED		
	3	1	1460172F	21.3	*	ENTRY STAIRS FACE PLATE RIGHT SIDE, AR1A02ST6002	1410002S	
	4	1	1460173F	21.3	*	ENTRY STAIRS FACE PLATE LEFT SIDE, AR1A02ST6002	1410002S	
	5	1	1460174F	14.4	*	PLATE,REINFORCEMENT,SIDE ENTRY STAIR,RIGHT SIDE AR1A02ST6015	1410002S	
	6	1	1460175F	1.8	*	PLATE,REINFORCEMENT,SIDE ENTRY STAIR,LEFT SIDE AR1A02ST6015	1410002S	
	7	2		2.7		ANGLE, GRADE 50 STEEL, 4"X4"X1/4", 5" LONG	1830003S	
	8	2		13.0		ANGLE, GRADE 50 STEEL, 4"X4"X1/4", 24" LONG	1830003S	
	9	2	1460178F	6.7		1/4" CORTEN PLATE: 4" X 23 11/16"	1410002S	
	10	2	1460137F	1	*	ENTRY STAIRS SUPPORT GUSSET - AR1A02ST6002A	1410002S	
B	11					ITEM DELETED		
						QUANTITIES ARE FOR ONE RAILCAR		

TOTAL WEIGHT = 878.2

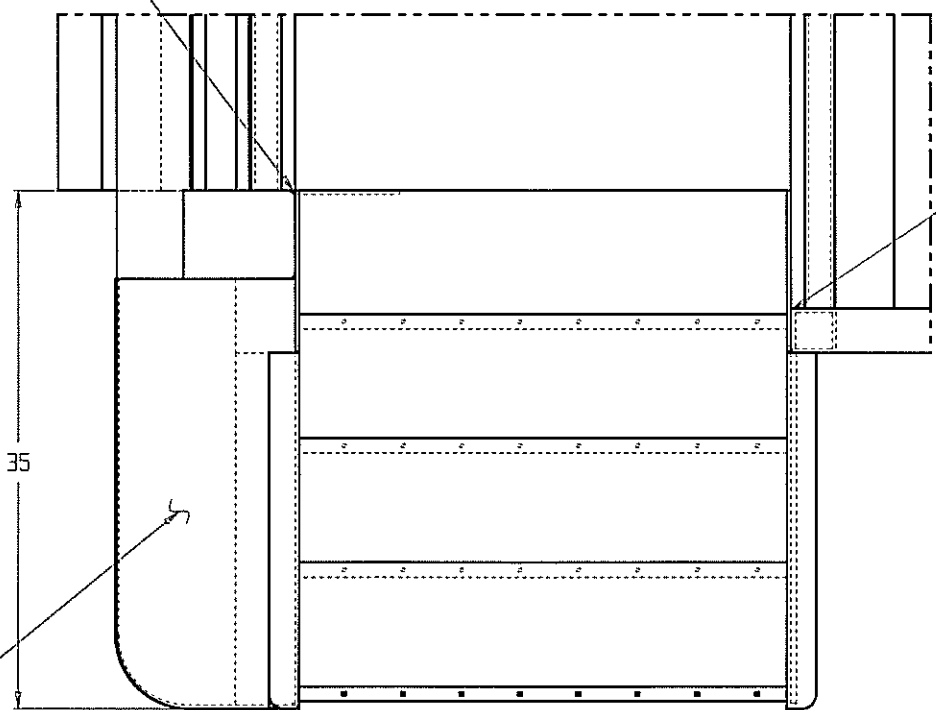
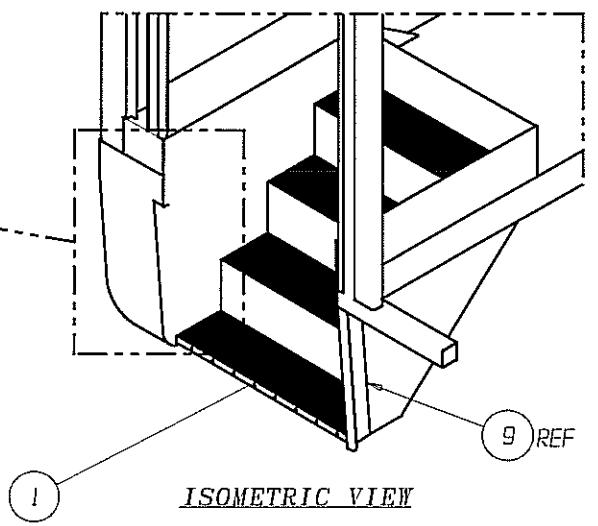
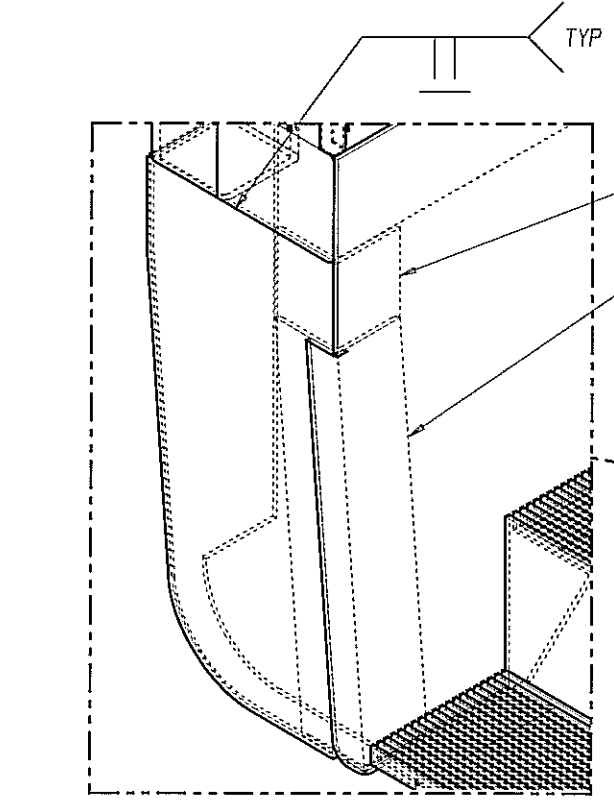
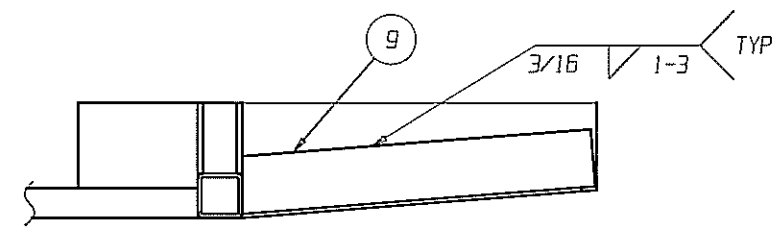
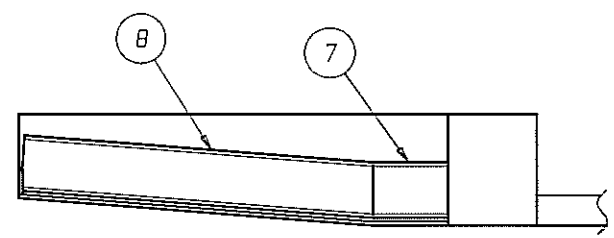
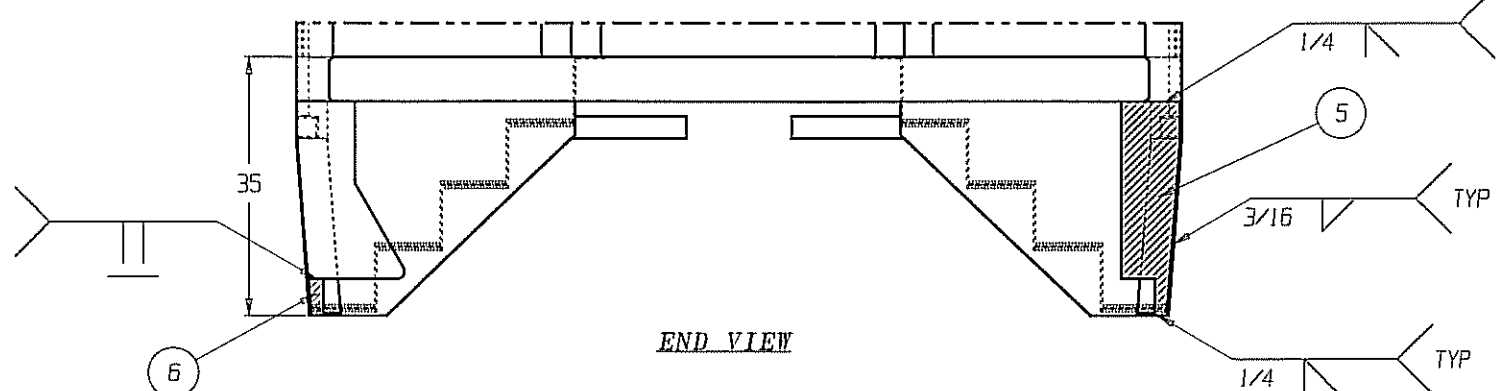
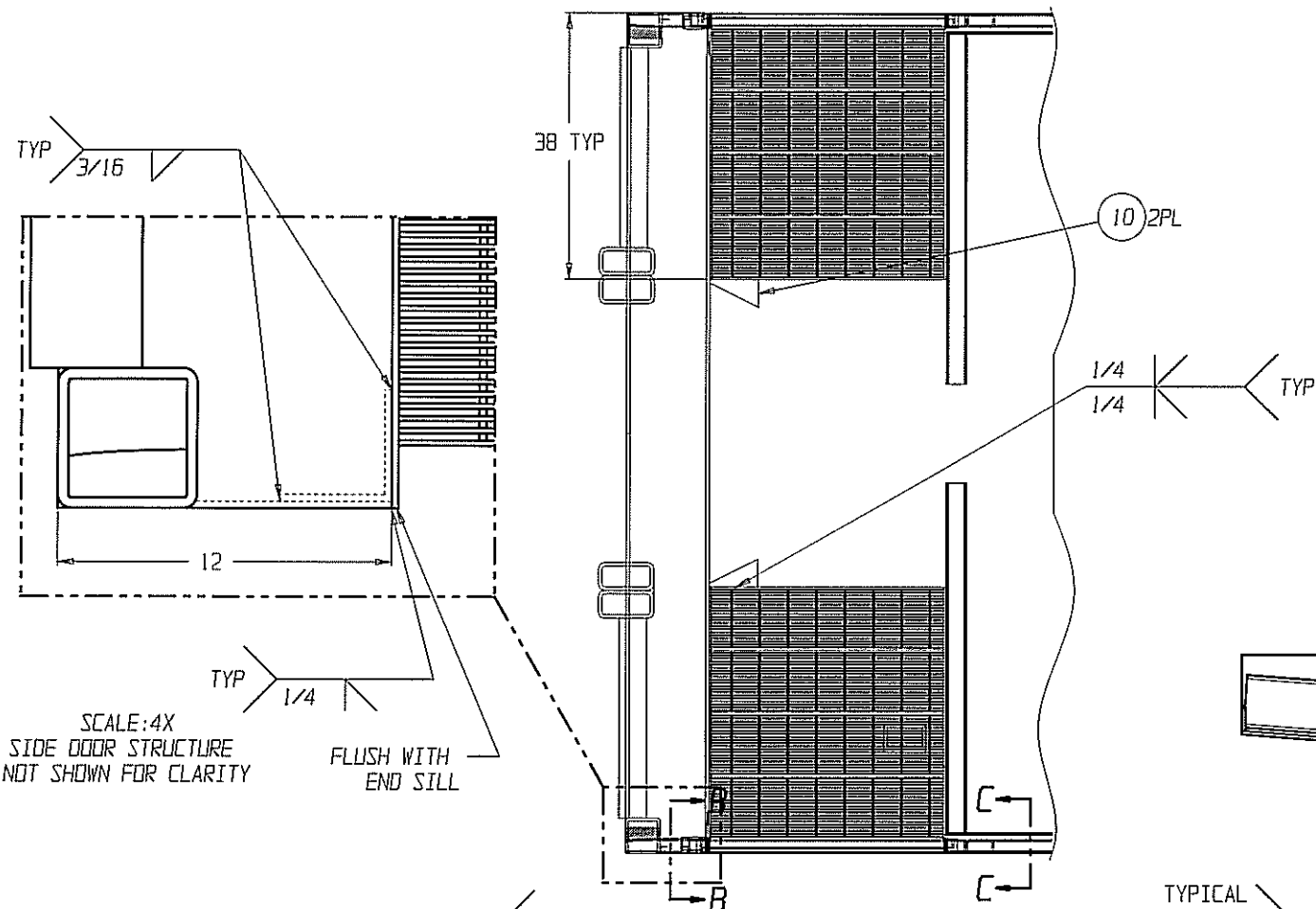
(TOTAL WEIGHT IS PER DRAWING)

8-10-23-07

APPROVED

THE INFORMATION ON THIS DOCUMENT IS PROPRIETARY. RECIPIENT BY ITS RECEIPT AGREES TO KEEP THIS DATA CONFIDENTIAL IN ALL RESPECTS. INFORMATION ON THIS DOCUMENT SHALL NOT BE COPIED NOR REPRODUCED IN ANY MANNER, NOR DISCLOSED ORALLY OR IN WRITING TO ANY THIRD PARTY, WITHOUT OUR EXPRESS WRITTEN AUTHORIZATION.

REV	DESCRIPTION	INIT	DATE
A	PRODUCTION RELEASE	BHH	25AUG04
B	ECR'S 1923, 1070 TO AS-BUILT	SPF	23OCT07



TYPICAL ITEM 1 TO END SILL
3/16 1-3

APPROVED

- NOTES:
- FOR BILL OF MATERIALS, SEE ARI1A02ST6014
 - DO NOT SCALE DRAWING
 - ALLOWABLE WELD PROCESSES: FCAW, SMAW
 - WELD ITEM 2 TO STAIR SIDEWALL PRIOR TO INSTALLING STAIRS TO CAR
 - ITEM 2 IS TO BE INSTALLED ON THE A-END SIDE OF THE R & L SIDE ENTRY STAIRS

COLORADO RAILCAR MFG LLC
 FT LIPTON, COLORADO 303/857-1066

PROJECT: ALASKA RR 2008

RAILCAR(S): TYPE 1

SIDE ENTRY STAIR INSTALLATION

SCALE (D): 1"=1'

DRAFTED BY: BHH

CHECKED BY: [Signature]

APPROVED BY: [Signature]

MODEL: ---

PAINT SCHEMATIC

REV	ITEM	QTY	PART NO.	LBS	*	DESCRIPTION	RAW MAT REQ / PO #
G	SA					PAINT SCHEMATIC	
	1	14	9410011S			PAINT,IMRON 5000,COLOR CODE 63203-U (BLUE) OR N0071HN BLUE (REPLACEMENT),ALASKA RR BLUE (GAL)	
	2	2	9410012S			PAINT,IMRON 5000,COLOR CODE 54701-U (YELLOW)	
	3	2	9410018S			DECAL,ROUNDED,24"Ø,ADHESIVE BACKED,ALASKA RR LOGO, BLUE LETTERS ON YELLOW BACKGROUND	
	4	4	9410014S			ACTIVATOR,DUPONT 193S (GAL)	
	5	3	9410032S			ACCELERATOR,DUPONT 389S (QUART)	
	6	11	9410013S			CLEAR COAT,IMRON 611,FOR IMRON 5000 PAINT (GAL)	
	7	2.75	9410015S			ACTIVATOR,IMRON VGY 611,CLEAR (GAL)	
E	8	0	9410030S			ENAMEL,CENTARI,SILVER-METALIC,COLOR MATCH DUPONT #43523 (GAL)	
E	9	0	9410031S			REDUCER,MID-TEMP,CENTARI-8022	
E	10	2	9410096F		*	PAINT STENCIL,"ALASKA" (DWG 9410096F-B)	
G	11	2	9410658F		*	PAINT STENCIL,"655" (DWG 9410658F) (CAR 655 ONLY)	
G	12	2	9410659F		*	PAINT STENCIL,"656" (DWG 9410659F) (CAR 656 ONLY)	
	13	1	9410039S			FISH-EYE ELIMINATOR,DUPONT 359S (PINT)	
B	14	4	9410359F			DECAL,"OVERHEIGHT CAR 18'-1"" ,2" HIGH TEXT ON CLEAR,TEXT COLOR: PANTONE 109C (YELLOW),FONT: SANS SERIF,2 MIL PRM CAST SENSITIVE EDGE, ADHESIVE BACKED	
C	15	4	8615011F		*	LABEL,BRAKE,"PLUNGER OUT BRAKES ON", PANTONE 109C (YELLOW) TEXT ON CLEAR (DWG 8615011F)	
E	16	4	9410237S			COATING,PROTECTIVE,LAWSON HIGH SOLIDS,CHROME ALUMINUM #55559 (SILVER),ALSO LABELED "INDUSTRIAL HIGH SOLIDS - PROTECTIVE COATING"	
F	17	8	9410485F			DECAL,EMERGENCY ACCESS WINDOW REMOVAL (DWG 9410485F)	

TOTAL WEIGHT = 0

(TOTAL WEIGHT IS PER DRAWING)

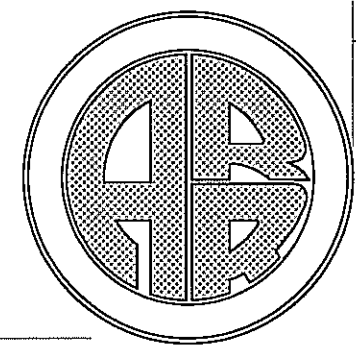
8/21/00

APPROVED

ECO	REV	DESCRIPTION	INIT	DATE
1808	E	ADDED LOCATION DIMENSIONS. CHG'D PAINT SPECS.	FEW	12FEB07
1950	F	ADD ITEM 17.	FEW	12APR07
1950	G	UPDATED CAR #'S	SPF	01FEB08

THE INFORMATION ON THIS DOCUMENT IS PROPRIETARY. RECEIPT BY ITS RECEIPT AGREES TO KEEP THIS DATA CONFIDENTIAL IN ALL RESPECTS. INFORMATION ON THIS DOCUMENT SHALL NOT BE COPIED NOR REPRODUCED IN ANY MANNER, NOR DISCLOSED ORALLY OR IN WRITING TO ANY THIRD PARTY, WITHOUT OUR EXPRESS WRITTEN AUTHORIZATION.

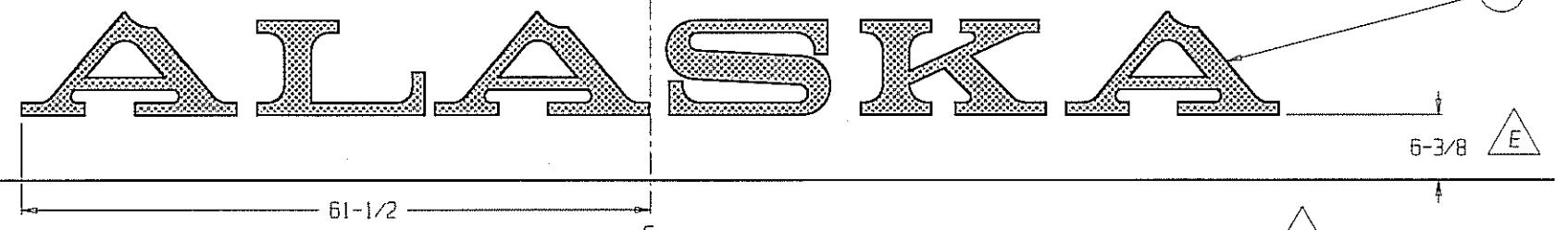
REV	DESCRIPTION	INIT	DATE
A	PRODUCTION RELEASE	SPF	27OCT04
B	ADDED OVERHEIGHT DECAL	SPF	05APR05
C	ADDED BRAKE LABEL	KMZ	18APR05
D	CHANGED NUMBER DECAL	SPF	06JUN06



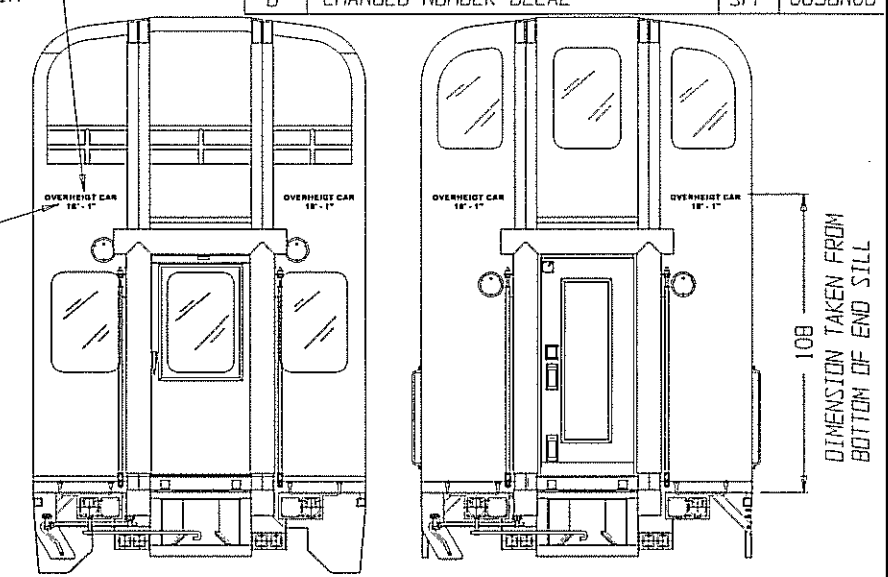
24" DIAMETER LOGOTYPE
YELLOW LETTERS ON BLUE BACKGROUND.
VERTICAL POSITION: CENTER ON 52.38" BLUE.
HORIZONTAL POSITION: MAINTAIN 30" (OR AS SPACE PERMITS) FROM VISUAL END OF SIDE (eg CORNER POST OR DOOR JAMB).

DETAIL C

BLUE/YELLOW LINE



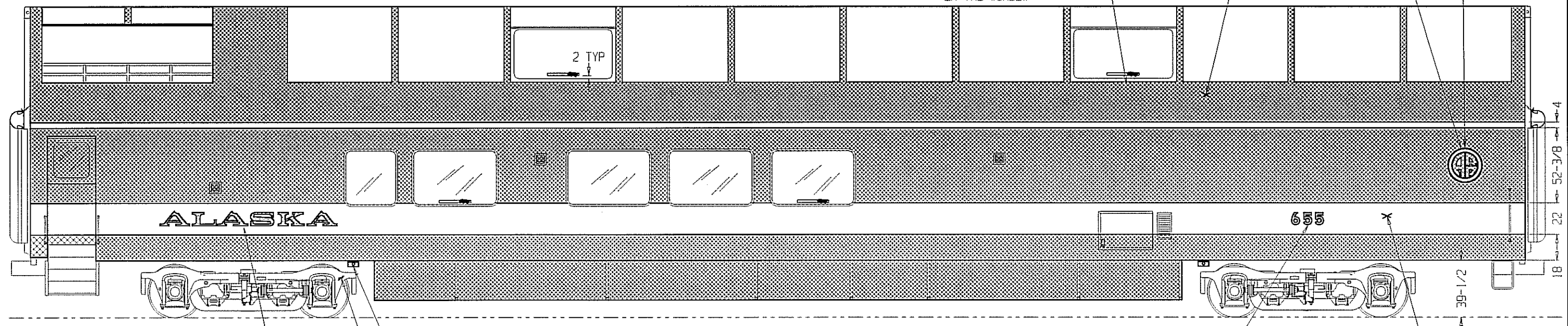
CENTER IN OPENING



B-END OF RAILCAR

DETAIL A

DECAL CENTERED BX ON THE WINDOW



ELEVATION VIEW
RIGHT SIDE

CENTER ON BOLSTER LATERALLY

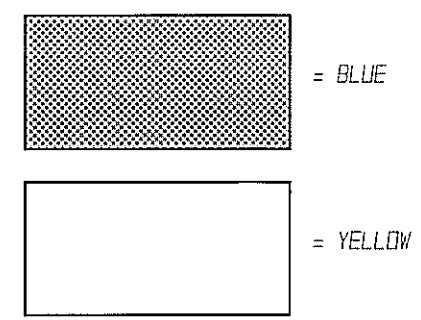
CENTER IN YELLOW STRIPE VERTICALLY

NOTES:

- DO NOT SCALE DRAWING.
- DO NOT PAINT STAINLESS STEEL, OTHER BRIGHT METAL, COUPLER OR WHEELS.
- ALL PAINTING TO BE IN ACCORDANCE WITH ARR SPEC'S FOR ROLLING STOCK.
- ENDS OF CAR TO BE BLUE, INCLUDING VESTIBULE AND U/L PLATFORM.
- IMRON PAINTED SURFACES TO BE CLEAR COATED (ITEMS 6,7).
- USE PAINT STENCILS (ITEMS 10-12) TO PAINT LETTERS AND NUMBERS

APPROVED

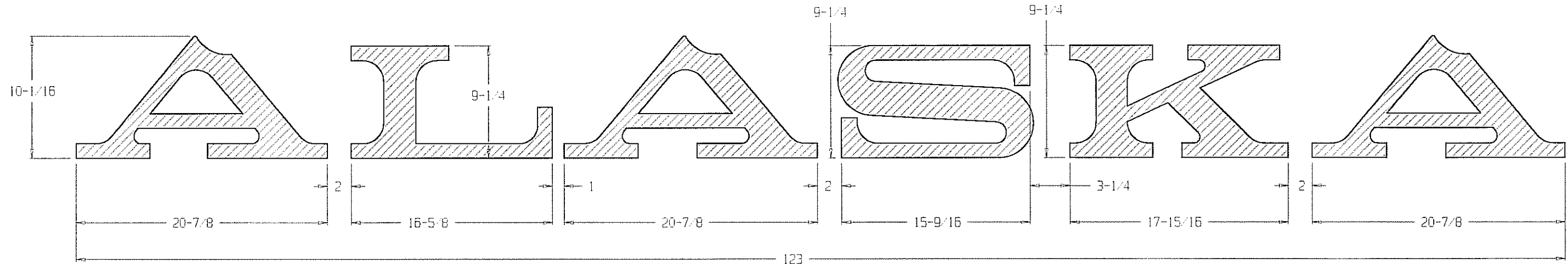
DIMENSION TOLERANCE = ± 1/16"



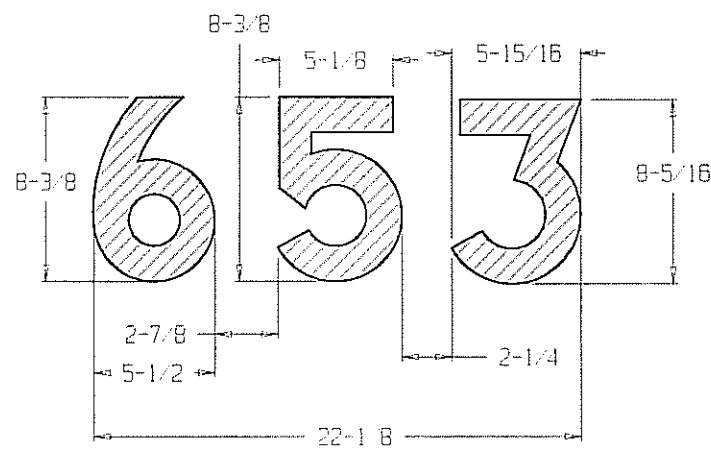
COLORADO RAILCAR MFG LLC	
FT LUPTON, COLORADO 303/857-1066	
PROJECT: ALASKA RR 2008	
RAILCAR(S): TYPE-1 CAR	SCALE (D): 3/8" = 1'
PAINT SCHEMATIC	DRAFTED BY: SPF
	CHECKED BY: [Signature]
	APPROVED BY: [Signature]
NEXT: -	WBS: 13-2 DWG #: AR1A13EA2001G

THE INFORMATION ON THIS DOCUMENT IS PROPRIETARY. RECEIPT BY ITS RECIPIENT AGREES TO KEEP THIS DATA CONFIDENTIAL IN ALL RESPECTS. INFORMATION ON THIS DOCUMENT SHALL NOT BE COPIED NOR REPRODUCED IN ANY MANNER, NOR DISCLOSED ORALLY OR IN WRITING TO ANY THIRD PARTY, WITHOUT OUR EXPRESS WRITTEN AUTHORIZATION.

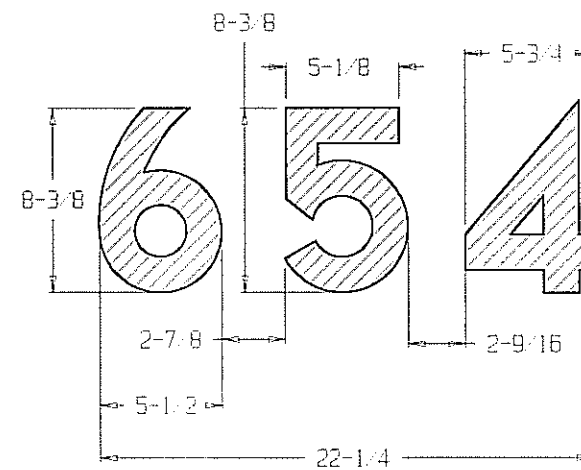
REV	DESCRIPTION	INIT	DATE
A	PRODUCTION RELEASE	SPF	27OCT04
B	CHANGED NUMBER DECAL	DRZ	06JUN06



CRM # 9410096F



CRM # 9410430F



CRM # 9410431F

NOTES:

- DO NOT SCALE DRAWING
- VENDOR TO USE CAD FILE FOR FAB

DIMENSION TOLERANCE = $\pm 1/32$ "
 ANGULAR TOLERANCE = $\pm 1^\circ$
 DRILLED HOLE TOLERANCE = $\pm \phi 1/64$ "
 UNLESS OTHERWISE SPECIFIED

COLORADO RAILCAR MFG LLC FT. LIPTON, COLORADO 303-857-1066	
PROJECT: ALASKA RR 2006	
RAILCAR: TYPE 1	SCALE: 1/4"=1"
PAINT MASK FABRICATION	DRAFTED BY: SPF
	CHECKED BY: <i>M. J. W.</i>
	APPROVED BY: <i>SPF</i>
MODEL: ----	

LETTERS (OR NUMBERS) TO BE SOLID WHITE

TO ENSURE ALIGNMENT, EACH PAINT MASK WILL COME AS ONE ASSEMBLY DONE WITH A TEMPORARY CLEAR OVER-LAYER THAT CAN BE REMOVED AND LEAVE THE LETTERS (OR NUMBERS) ON THE RAILCAR.

APPROVED