



**ALASKA RAILROAD CORPORATION**  
**ENGINEERING SERVICES**

P.O. BOX 107500, ANCHORAGE, ALASKA 99510-7500

# **ANCHORAGE DEPOT: PEDESTRIAN ENHANCEMENTS**

## **REQUEST FOR QUOTE SET**

**JUNE 2019**



**ALASKA MAP**  
 NOT TO SCALE

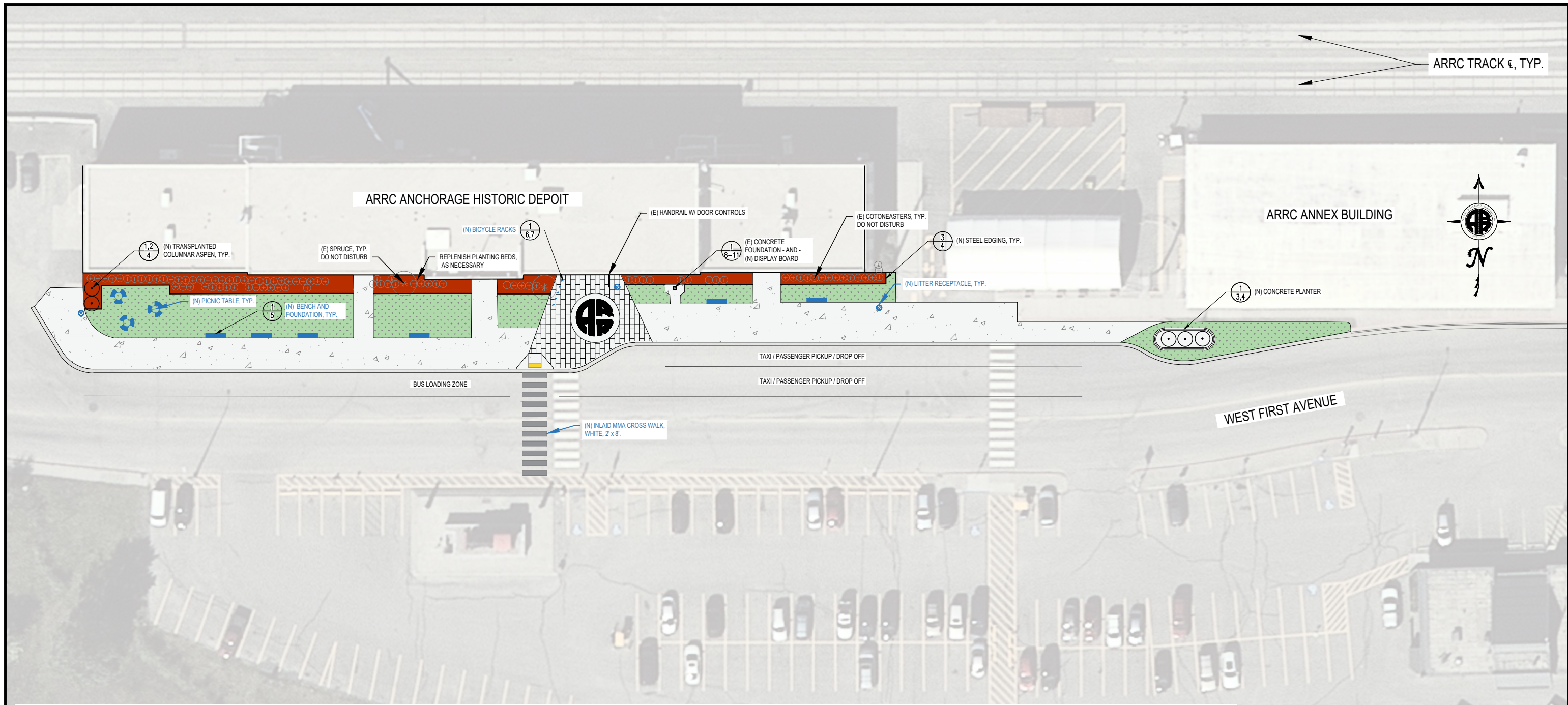
**INDEX OF DRAWINGS**

SHEET	TITLE
1	G1.0 COVER SHEET
2	G1.1 PLAN VIEW - OVERALL SITE
3	C1.0 CONCRETE PLANTER AND PLANTING DETAIL
4	C1.1 LANDSCAPE DETAILS - EDGING AND PLANTING
5	C1.2 BENCH AND BENCH FOUNDATION CONSTRUCTION DETAILS
6	C1.3 BICYCLE RACK DETAILS - GENERAL DIMENSIONS AND LAYOUT
7	C1.4 BICYCLE RACK DETAILS - ACCESSORY MOUNTING HARDWARE
8	C1.5 DISPLAY BOARD FOUNDATION - EXISTING CONDITION
9	C1.6 DISPLAY BOARD FOUNDATION - MODIFICATIONS
10	C1.7 DISPLAY BOARD MOUNTING BRACKET - FABRICATION DETAILS
11	C1.8 DISPLAY BOARD - INSTALLATION DETAILS

<b>ALASKA RAILROAD CORPORATION</b> ENGINEERING SERVICES P.O. BOX 107500, ANCHORAGE, ALASKA 99510-7500		
PROJECT : <b>ARRC Transit Upgrades</b> <b>ANC Depot: Pedestrian Enhancements</b>		
TITLE: <b>Cover Sheet</b>		
DESIGNED BY: BAO	SCALE : AS NOTED	AFE NO.:
DRAWN BY: BAO	DATE : 6/4/2019	ACAD FILE:
CHECKED BY: GKT		DWG NO. <b>1</b> OF <b>11</b>
APPROVED BY: BJA		

REV.	DATE	BY	REVISION



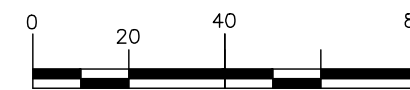


**GENERAL NOTES:**

**PLAN VIEW - OVERALL SITE**

SCALE 1" = 40'

1. DRAWINGS DEPICTED THE GENERAL LOCATIONS OF NEW FEATURES . COORDINATE EXACT LOCATIONS THROUGH ARRC'S ON-SITE REPRESENTATIVE. ADJUSTMENTS TO THE LOCATIONS OF THE WORK LIMITS SHALL BE COORDINATED THROUGH ARRC'S ON-SITE REPRESENTATIVE.
2. REQUEST LOCATES THROUGH THE 811 ALASKA DIGLINE SERVICE A MINIMUM OF 10 DAYS PRIOR TO THE START OF EXCAVATION ACTIVITIES.
3. NO EXCAVATION IS TO REMAIN OPEN IN EXCESS OF THREE (3) DAYS. OPEN EXCAVATIONS SHALL BE MARKED AND DELINEATED THROUGHOUT THE DURATION OF THE EXCAVATION.
4. EROSION AND SEDIMENT CONTROLS SHALL BE IMPLEMENTED IN ACCORDANCE WITH THE LATEST ALASKA GENERAL CONSTRUCTION PERMIT. BEST MANAGEMENT PRACTICE (BMP)'S SHALL BE IMPLEMENTED TO ENSURE THAT SEDIMENT IS NOT TRANSPORTED OUTSIDE THE WORK LIMITS AND/OR TRACKED ONTO IMPROVED SURFACES (i.e. A.C. PAVEMENT OR CONCRETE).
5. EXCAVATIONS SHALL BE BEDDED AND BACKFILLED (USING NATIVE MATERIAL) IN ACCORDANCE WITH THE CONTRACT DOCUMENTS AND SECTION 204 OF THE ALASKA DEPARTMENT OF TRANSPORTATION'S STANDARD SPECIFICATIONS FOR HIGHWAY CONSTRUCTION, 2017 EDITION.
6. ALL CONSTRUCTION ACTIVITIES EITHER OCCURRING WITHIN, OR HAVE THE POTENTIAL TO ENTER WITHIN, 20.0' OF THE NEAREST TRACK FROM THE LOCATION OF THE WORK WILL REQUIRE ARRC FLAGGER PROTECTION.
7. WORK PERFORMED DURING PASSENGER OPERATIONS WILL HAVE TO COORDINATED AS NOTED IN THE CONTRACT DOCUMENTS.
8. (E) DESCRIPTORS DESIGNATE 'EXISTING' ITEMS WHEREAS (N) DESCRIPTORS DESIGNATE 'NEW' ITEMS.



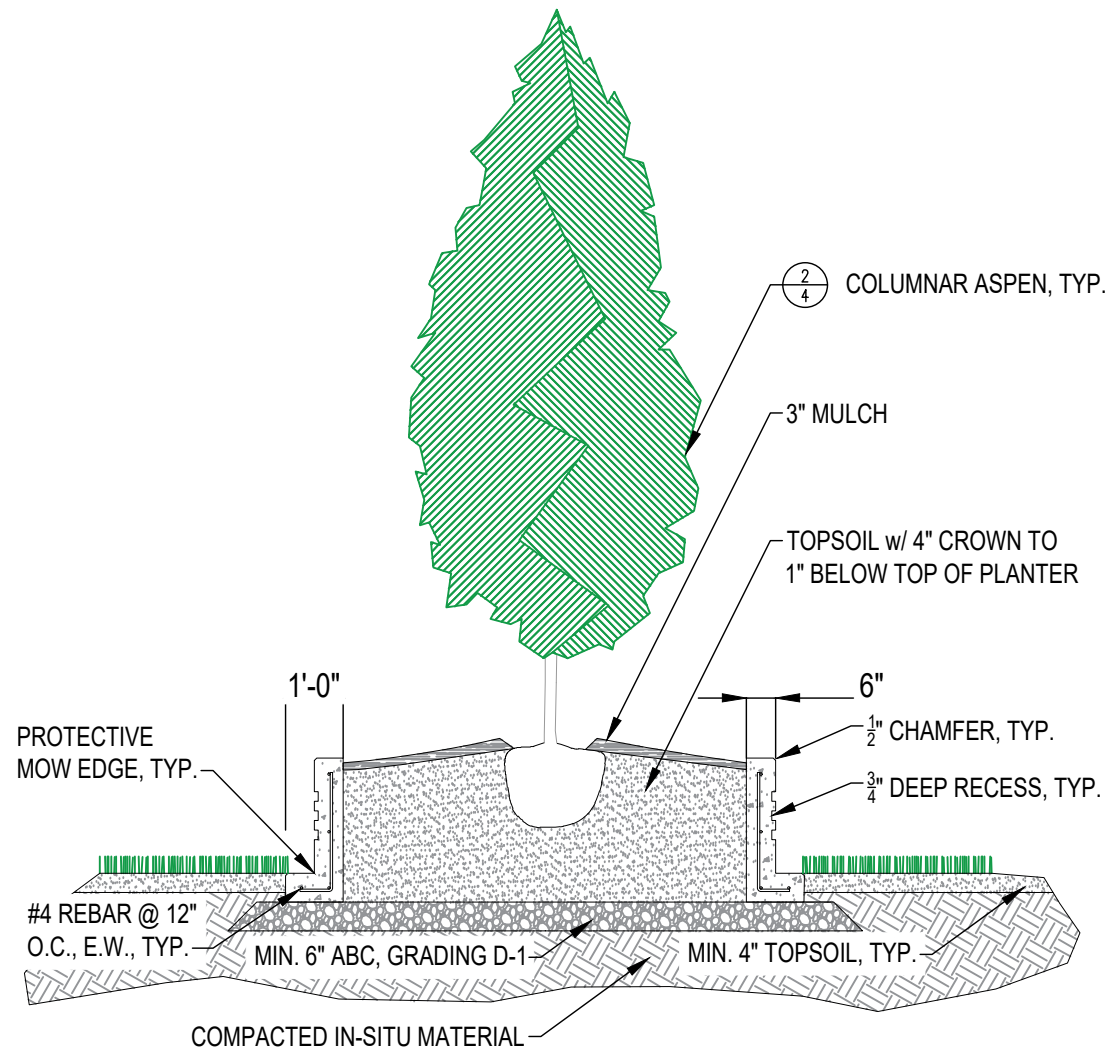
<p><b>ALASKA RAILROAD CORPORATION</b> ENGINEERING SERVICES P.O. BOX 107500, ANCHORAGE, ALASKA 99510-7500</p>		
<p>PROJECT : <b>ARRC Transit Enhancements ANC Historic Depot: Pedestrian Upgrades</b></p>		
<p>TITLE: <b>Plan View Overall Site</b></p>		
DESIGNED BY: BAO	SCALE : AS NOTED	AFE NO.:
DRAWN BY: BAO	DATE : 6/4/2019	ACAD FILE:
CHECKED BY: GKT		DWG NO.
APPROVED BY: BJA		<b>2</b> OF <b>11</b>



1  
3

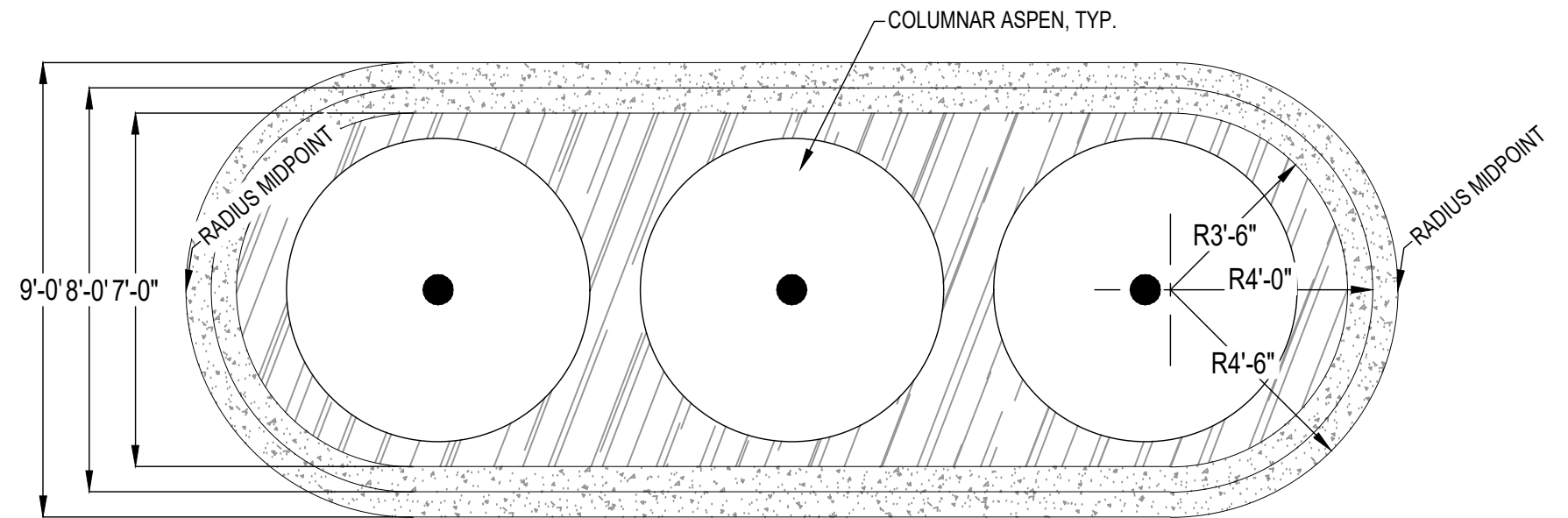
# CONCRETE PLANTER AND PLANTING DETAILS

SCALE 1:40



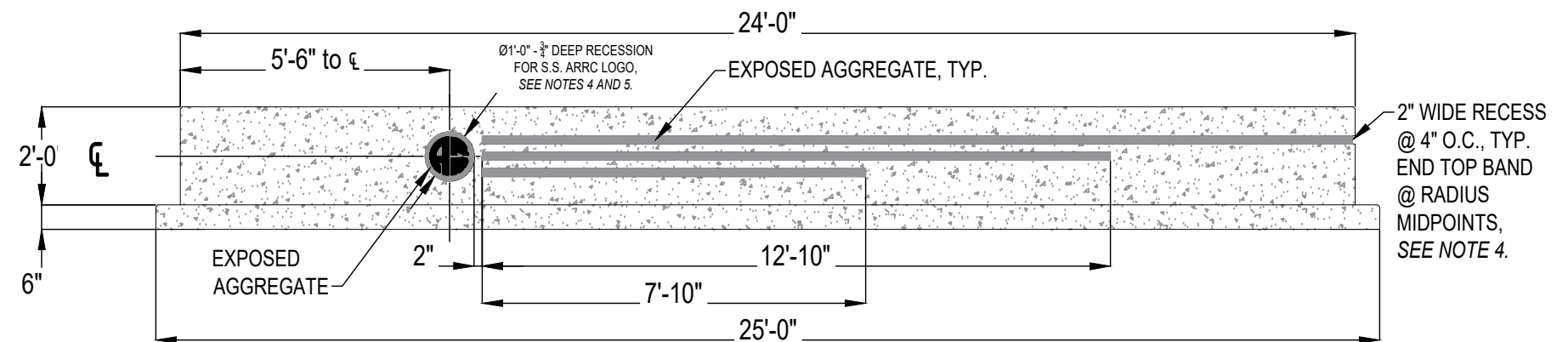
**CONCRETE PLANTER AND PLANTING DETAIL**

PROFILE VIEW – END



**CONCRETE PLANTER DETAIL AND PLANTING DETAIL**

PLAN VIEW




**CONCRETE PLANTER DETAIL**

PROFILE VIEW – STREET

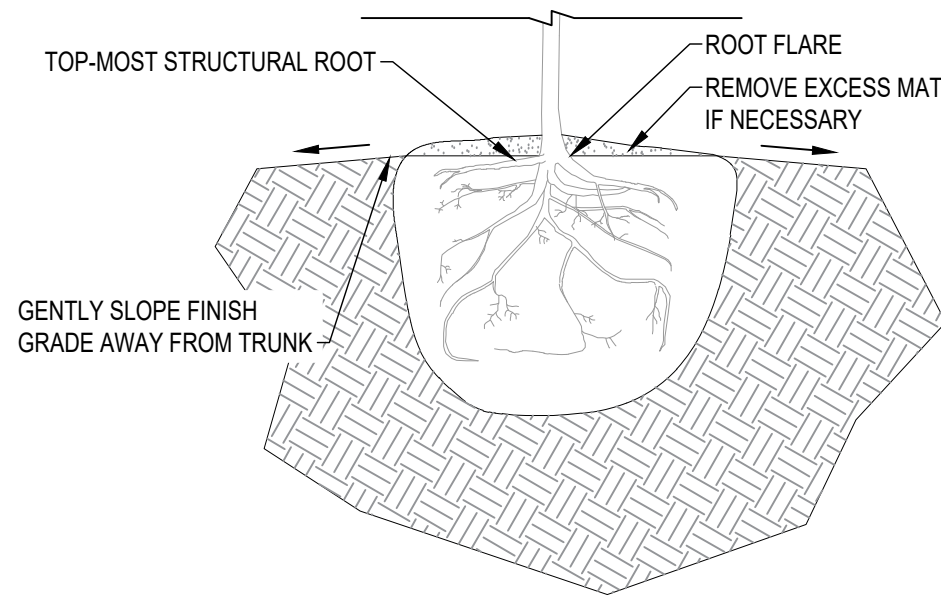
## CONSTRUCTION NOTES:

1.  $f_c = 4,000$  psi (min.)
2. CONCRETE COLOR: BASF™ MasterColor® "Stone Harbor MC2501" or approved equal
3. REINFORCING STEEL: ASTM A 615 Grade 60 (min.), bare
4. FORM EXPOSED AGGREGATE RECESSED BANDS AND EXPOSED AGGREGATE ARRC LOGO INSERT ON OPPOSITE SIDE OF PLANTER, REVERSED.
5. AFFIX MIRROR POLISHED STAINLESS STEEL (S.S.) 10"Ø (1/2" plate) ARRC LOGO USING S.S. HARDWARE.

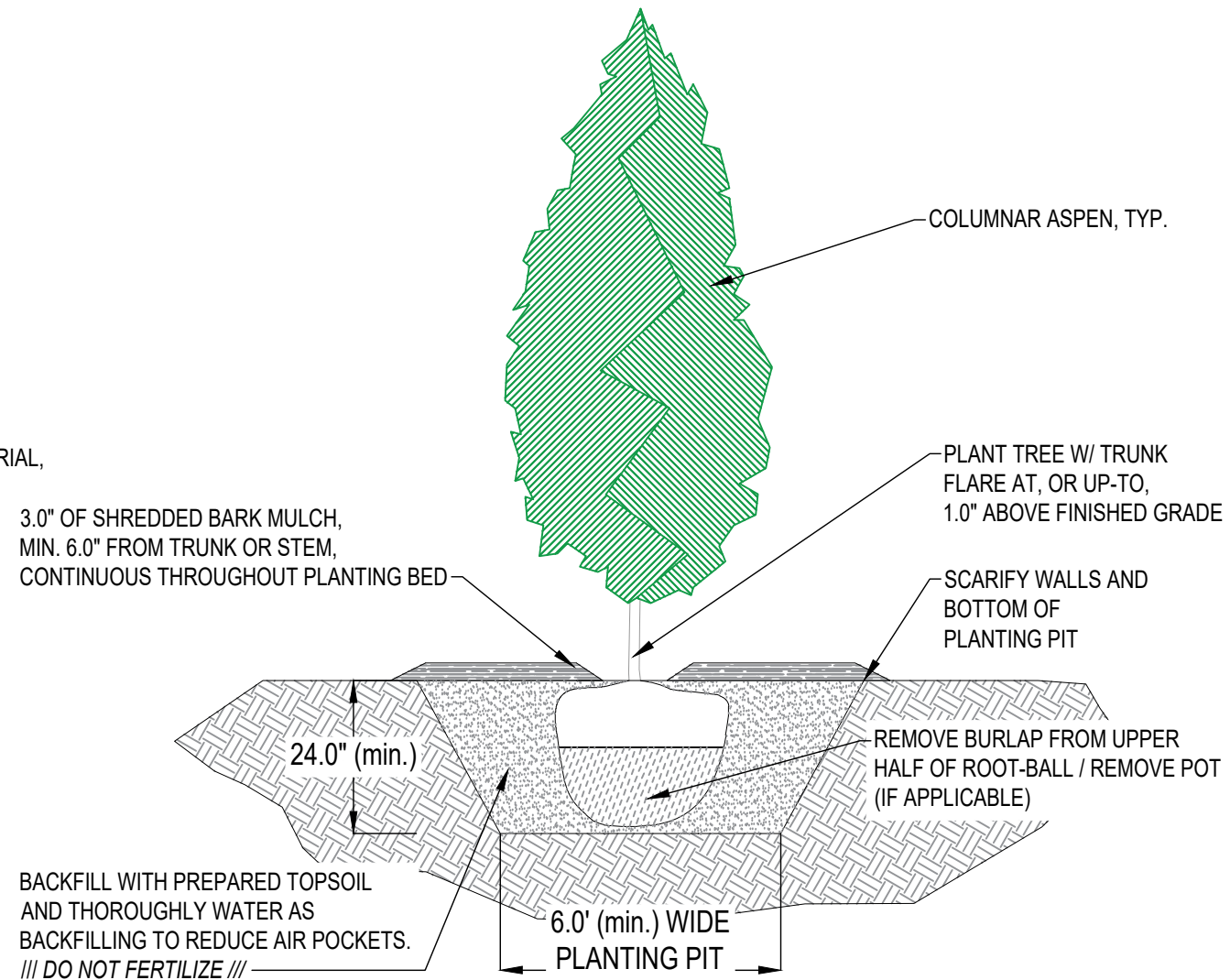
 <b>ALASKA RAILROAD CORPORATION</b> ENGINEERING SERVICES P.O. BOX 107500, ANCHORAGE, ALASKA 99510-7500		
PROJECT : <b>ARRC Transit Enhancements ANC Historic Depot: Pedestrian Upgrades</b>		
TITLE: <b>Concrete Planter and Planting Detail</b>		
DESIGNED BY: BAO	SCALE : AS NOTED	AFE NO.:
DRAWN BY: BAO	DATE : 6/4/2019	ACAD FILE:
CHECKED BY: GKT		DWG NO.
APPROVED BY: BJA		<b>3</b> OF <b>11</b>

# CONCRETE PLANTER AND PLANTING DETAILS

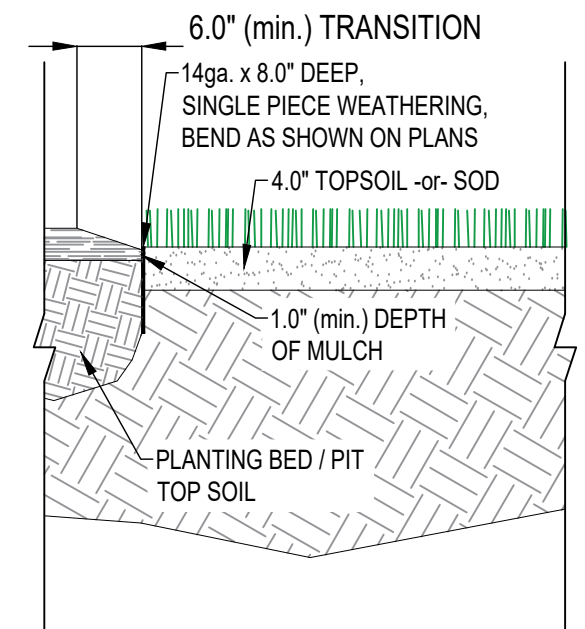
SCALE: NTS




1  
4 **PLANTING DEPTH DETAIL**



2  
4 **TREE PLANTING DETAIL**



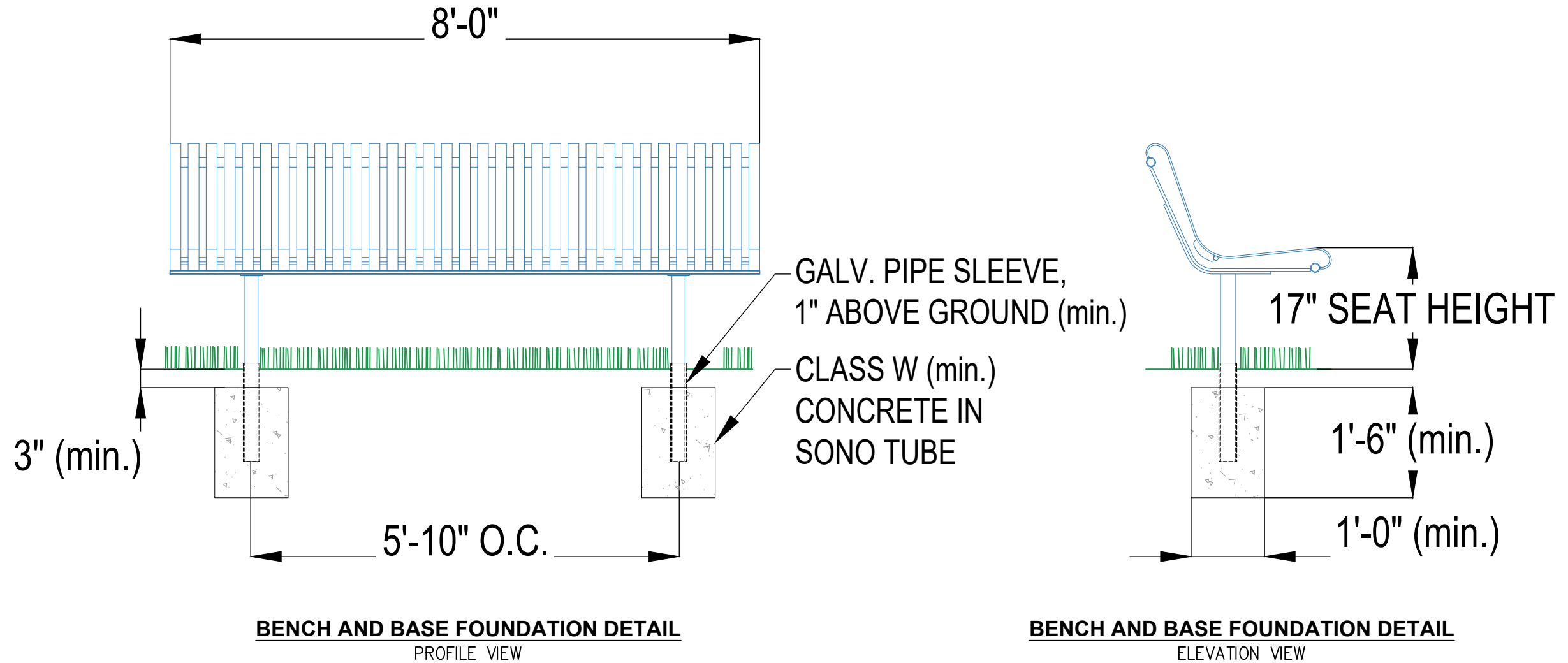
3  
4 **STEEL EDGING DETAIL**


 <b>ALASKA RAILROAD CORPORATION</b> ENGINEERING SERVICES P.O. BOX 107500, ANCHORAGE, ALASKA 99510-7500		
PROJECT : <b>ARRC Transit Enhancements ANC Historic Depot: Pedestrian Upgrades</b>		
TITLE: <b>Landscape Details Edging and Planting</b>		
DESIGNED BY: BAO	SCALE : AS NOTED	AFE NO.:
DRAWN BY: BAO	DATE : 6/4/2019	ACAD FILE:
CHECKED BY: GKT		DWG NO. <b>4</b> OF <b>11</b>
APPROVED BY: BJA		

1  
5

# BENCH AND BASE FOUNDATION

SCALE: NTS



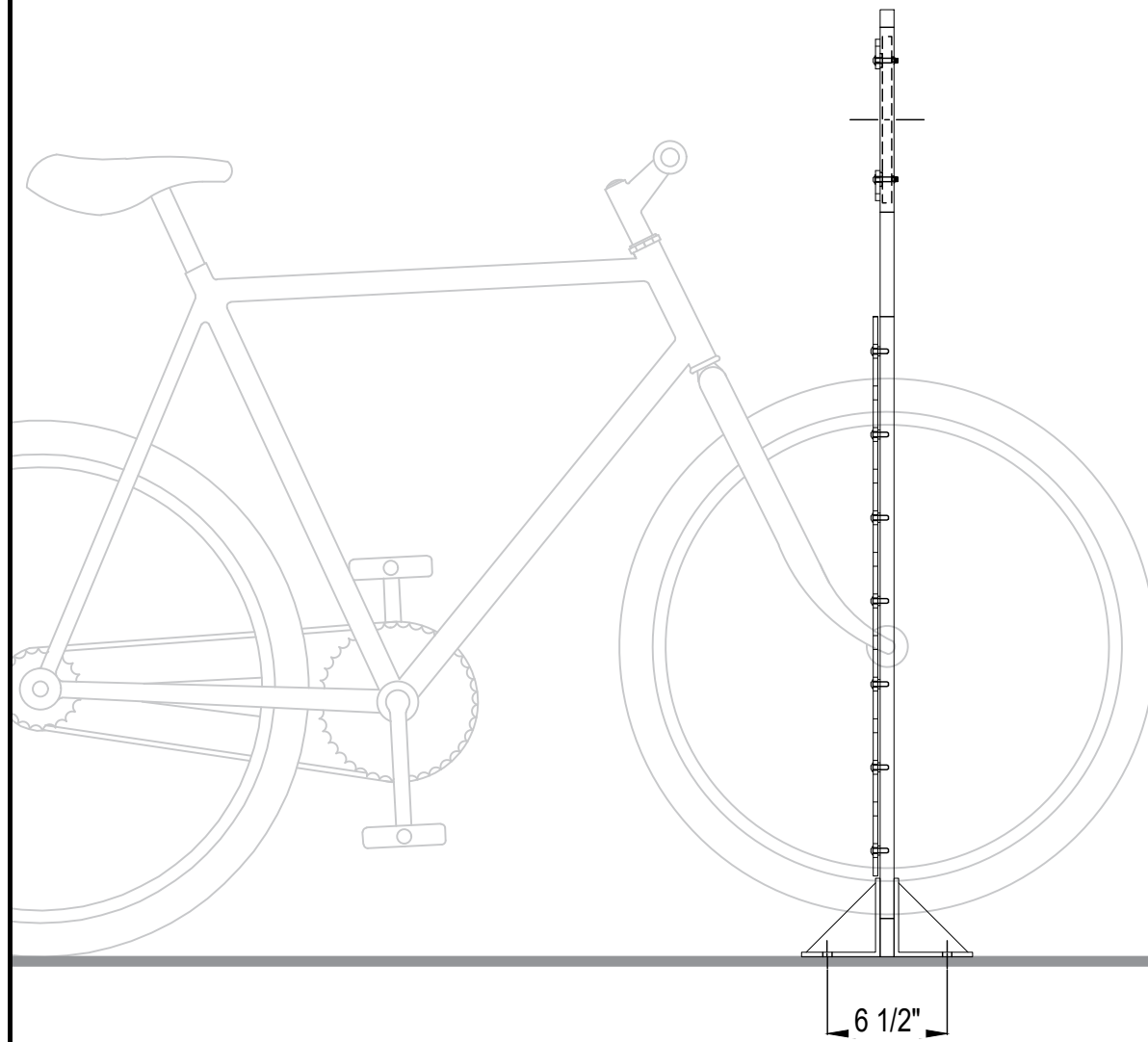
 <b>ALASKA RAILROAD CORPORATION</b> ENGINEERING SERVICES P.O. BOX 107500, ANCHORAGE, ALASKA 99510-7500		
PROJECT : <b>ARRC Transit Enhancements ANC Historic Depot: Pedestrian Upgrades</b>		
TITLE: <b>Bench and Bench Foundation Construction Details</b>		
DESIGNED BY: BAO	SCALE : AS NOTED	AFE NO.:
DRAWN BY: BAO		ACAD FILE:
CHECKED BY: GKT	DATE : 6/4/2019	DWG NO. <b>5</b> OF <b>11</b>
APPROVED BY: BJA		

1/6

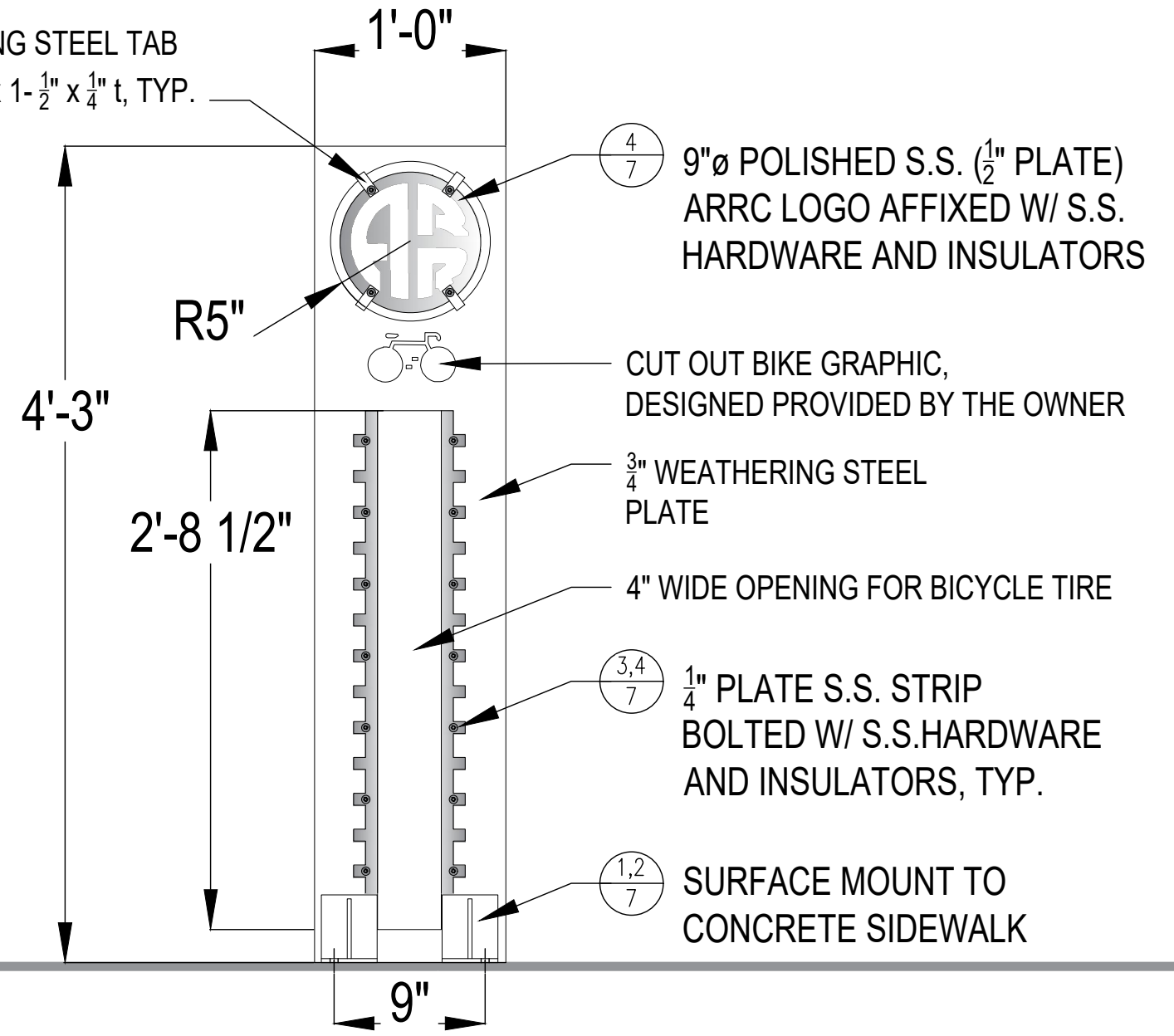
# BICYCLE RACK

SCALE: 1:10


WELDED WEATHERING STEEL TAB  
FOR ARRC LOGO,  $\frac{5}{8}$ " x  $1-\frac{1}{2}$ " x  $\frac{1}{4}$ " t, TYP.



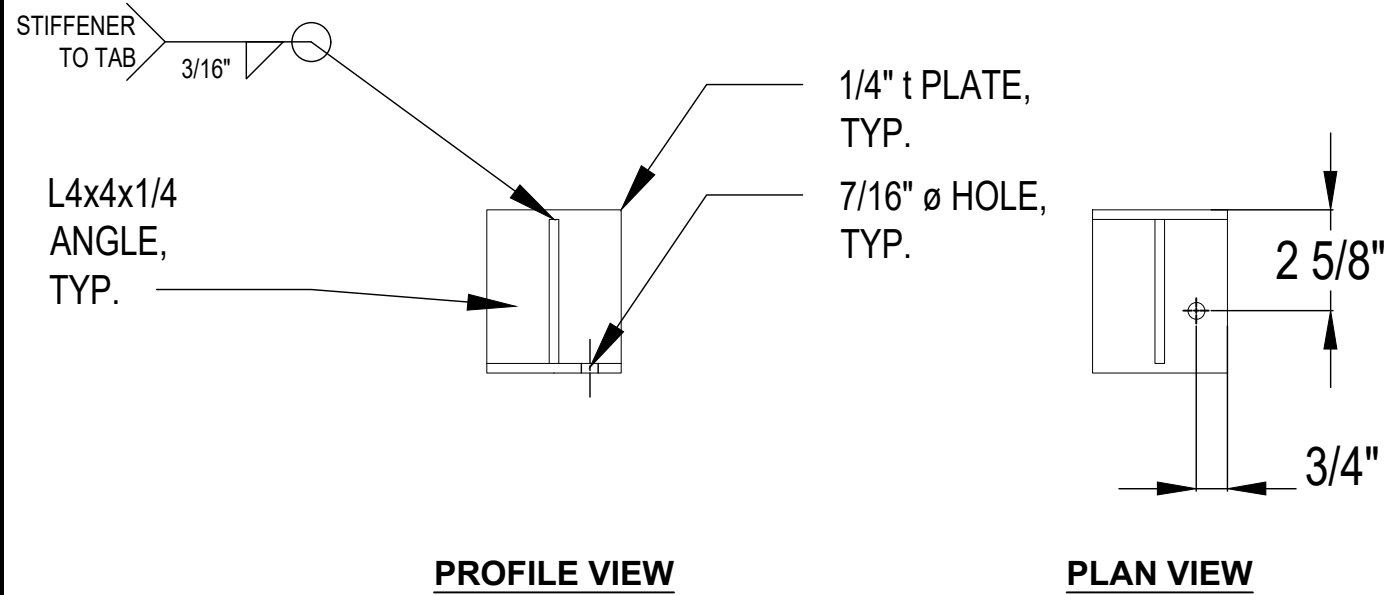
**BICYCLE RACK**  
PROFILE VIEW



**BICYCLE RACK DETAIL**  
PLAN VIEW

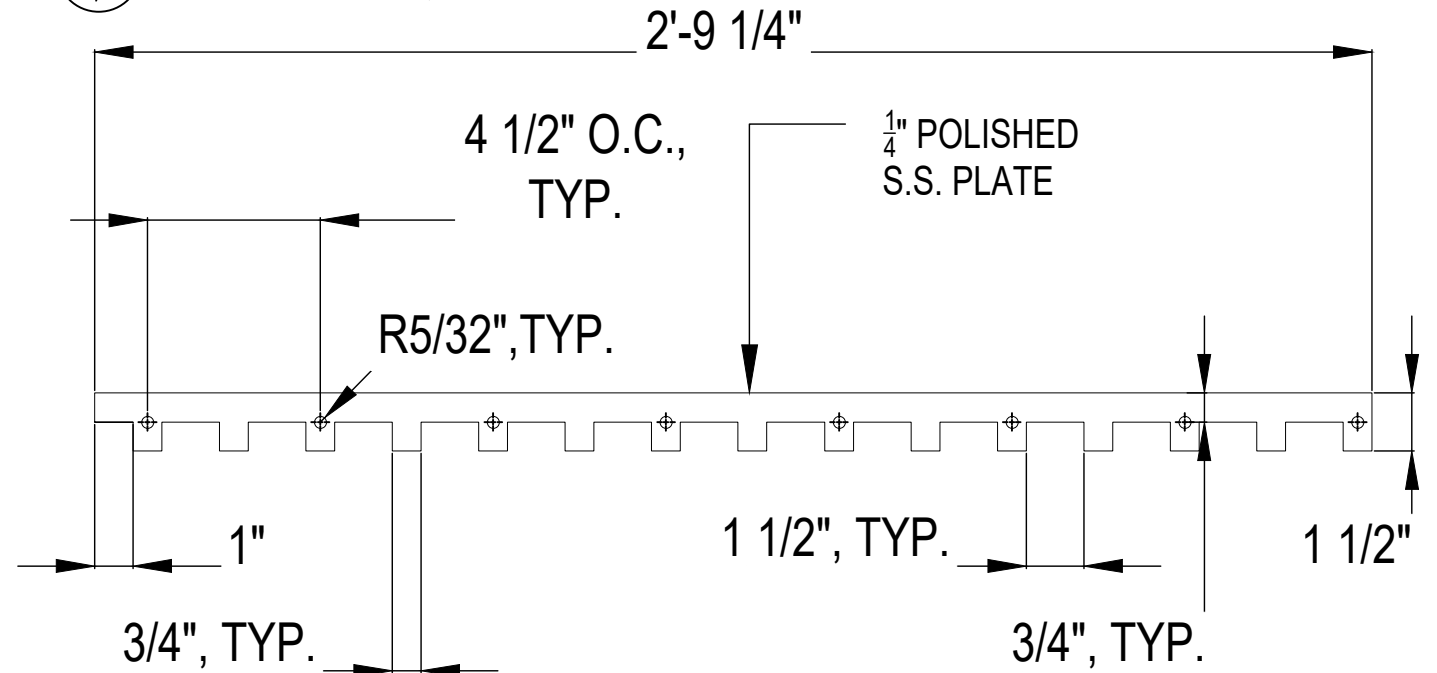
 <b>ALASKA RAILROAD CORPORATION</b> ENGINEERING SERVICES P.O. BOX 107500, ANCHORAGE, ALASKA 99510-7500		
PROJECT : <b>ARRC Transit Enhancements ANC Historic Depot: Pedestrian Upgrades</b>		
TITLE: <b>Bicycle Rack Details General Dimensions and Layout</b>		
DESIGNED BY: BAO	SCALE : AS NOTED	AFE NO.:
DRAWN BY: BAO	DATE : 6/4/2019	ACAD FILE:
CHECKED BY: GKT		DWG NO. <b>6</b> OF <b>11</b>
APPROVED BY: BJA		

**1**  
**7** **SURFACE MOUNT TAB DETAIL**  
PLAN AND PROFILE VIEWS, SCALE: 1:5

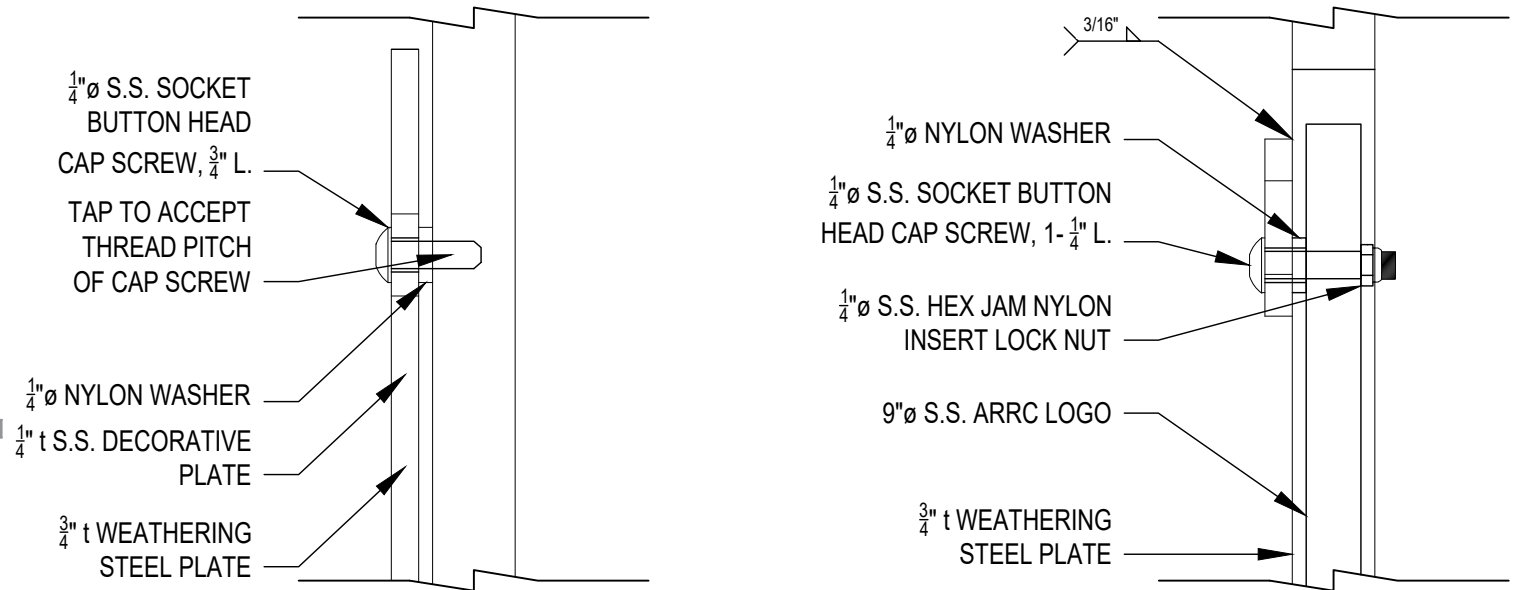


\*RIGHT-HAND MOUNT TAB SHOWN, MIRROR FOR LEFT-HAND MOUNT TAB

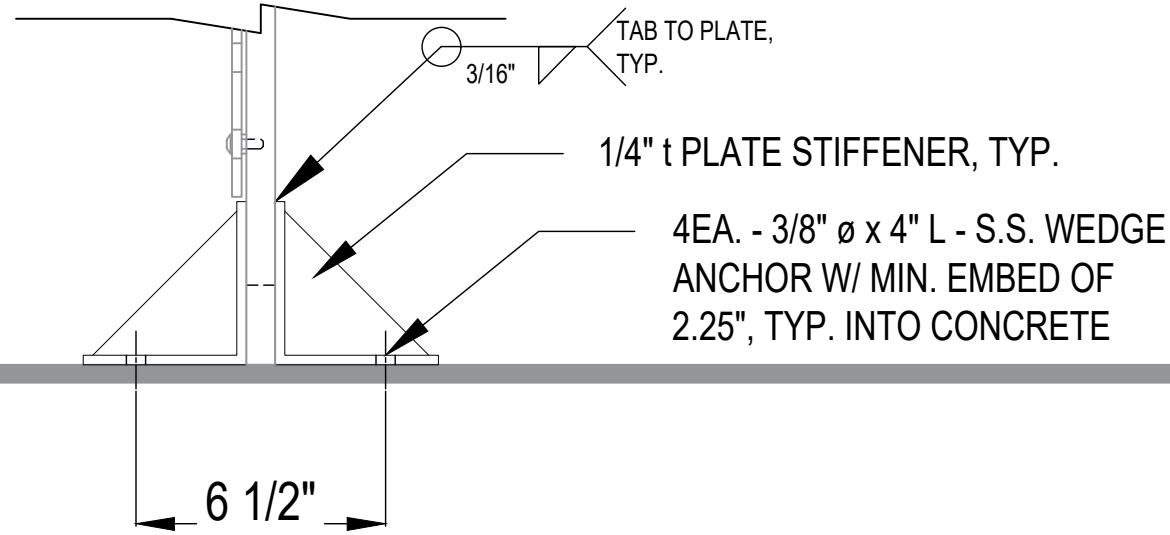
**3**  
**7** **DECORATIVE S.S. PLATE DETAIL**  
PLAN VIEW, SCALE: 1:5




**4**  
**7** **S.S. HARDWARE ATTACHMENT**  
PROFILE VIEW, SCALE: NTS



**2**  
**7** **SURFACE MOUNT TAB DETAIL**  
ELEVATION VIEW, SCALE: 1:5

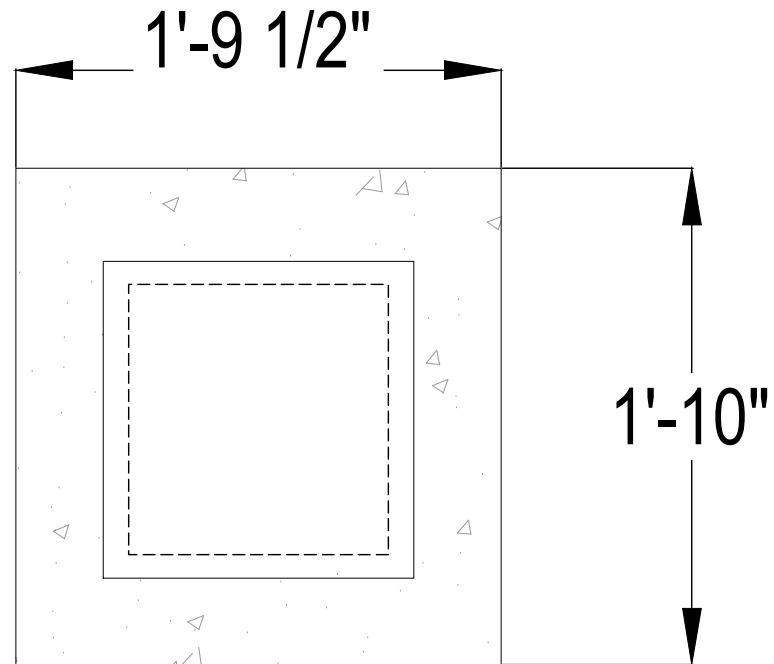


 <b>ALASKA RAILROAD CORPORATION</b> ENGINEERING SERVICES P.O. BOX 107500, ANCHORAGE, ALASKA 99510-7500		
PROJECT : <b>ARRC Transit Enhancements ANC Historic Depot: Pedestrian Upgrades</b>		
TITLE: <b>Bicycle Rack Details Accessory Mounting Hardware</b>		
DESIGNED BY: BAO	SCALE : AS NOTED	AFE NO.:
DRAWN BY: BAO	DATE : 6/4/2019	ACAD FILE:
CHECKED BY: GKT		DWG NO. <b>7</b> OF <b>11</b>
APPROVED BY: BJA		

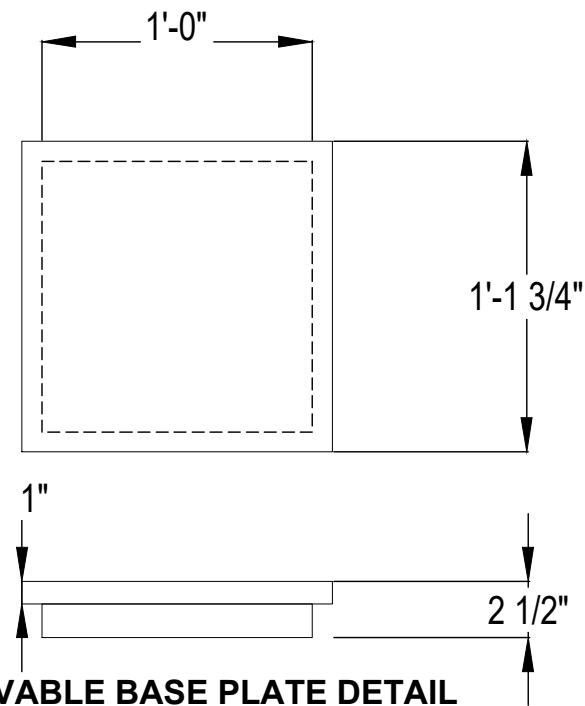
1/8

# DISPLAY BOARD FOUNDATION DETAIL

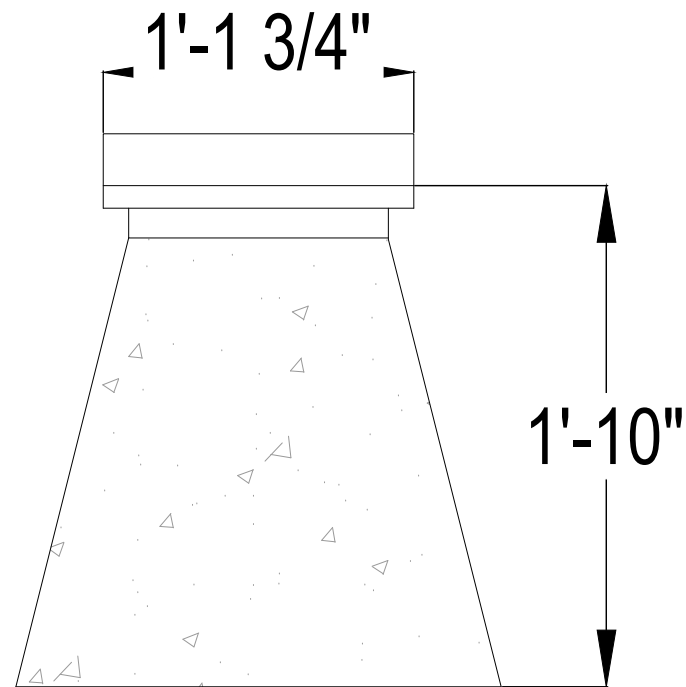
SCALE: NTS - CONTRACTOR TO FIELD VERIFY



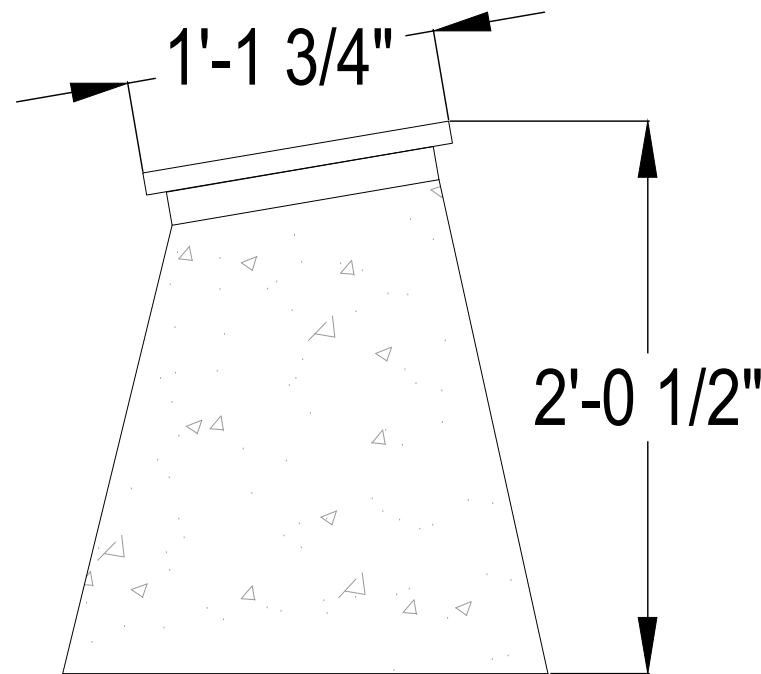
**DISPLAY BOARD FOUNDATION DETAIL**  
PLAN VIEW




**REMOVABLE BASE PLATE DETAIL**  
PLAN AND PROFILE VIEW



**DISPLAY BOARD FOUNDATION DETAIL**  
PROFILE VIEW



**DISPLAY BOARD FOUNDATION DETAIL**  
ELEVATION VIEW

 <b>ALASKA RAILROAD CORPORATION</b> ENGINEERING SERVICES P.O. BOX 107500, ANCHORAGE, ALASKA 99510-7500		
PROJECT : <b>ARRC Transit Enhancements ANC Historic Depot: Pedestrian Upgrades</b>		
TITLE: <b>Display Board Foundation Existing Condition</b>		
DESIGNED BY: BAO	SCALE : AS NOTED	AFE NO.:
DRAWN BY: BAO	DATE : 6/4/2019	ACAD FILE:
CHECKED BY: GKT		DWG NO. <b>8</b> OF <b>11</b>
APPROVED BY: BJA		



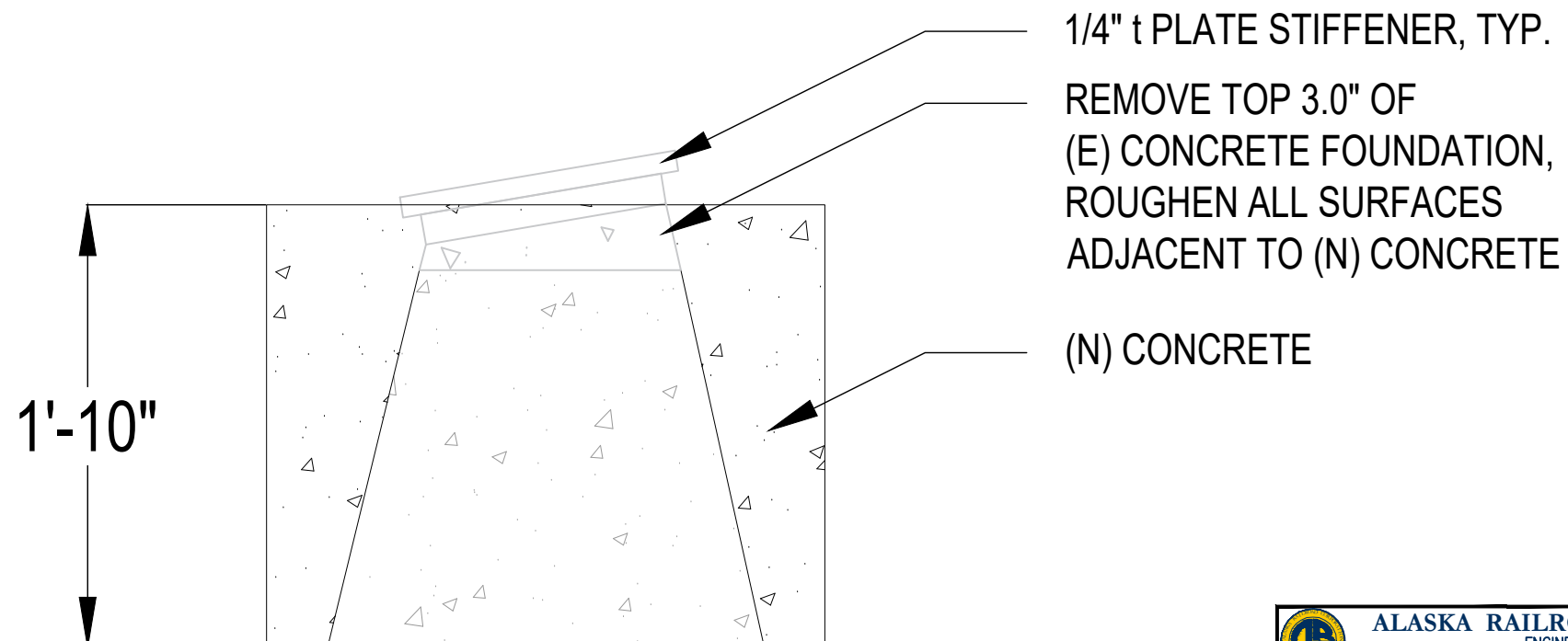
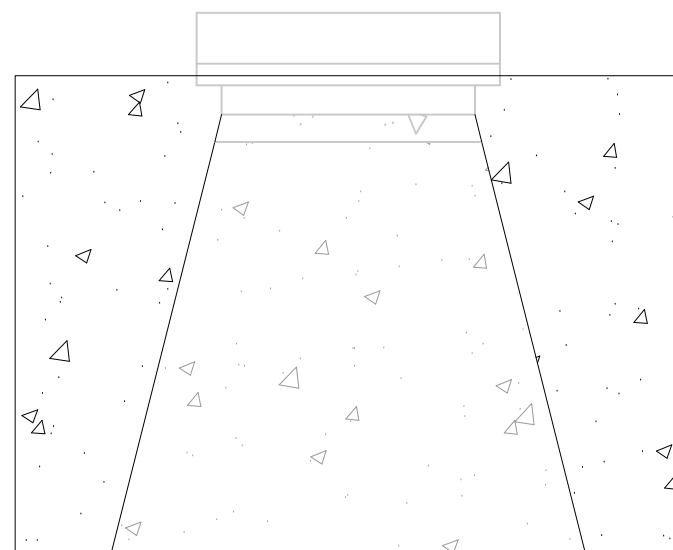
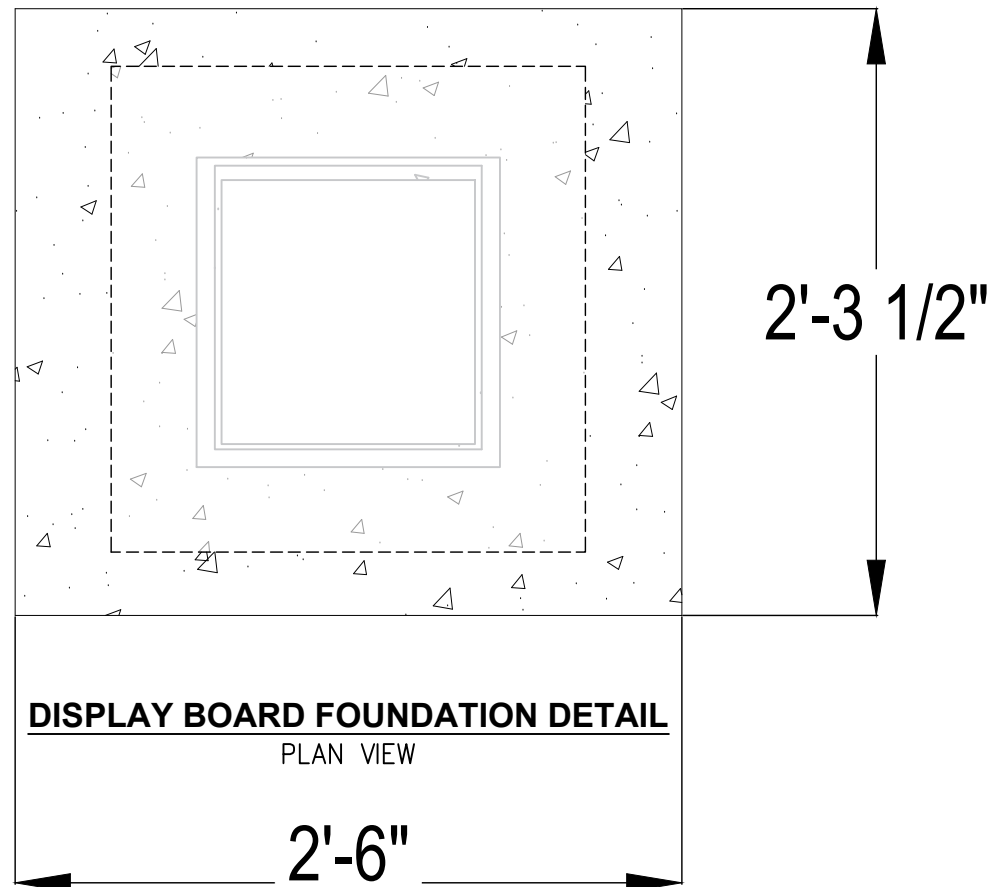
1  
9

# DISPLAY BOARD FOUNDATION MODIFICATION DETAIL


SCALE: NTS – CONTRACTOR TO FIELD VERIFY

## CONSTRUCTION NOTES:

1.  $f_c = 4,000$  psi (min.)
2. CONCRETE COLOR: BASF™ MasterColor® "Stone Harbor MC2501" or approved equal
3. REINFORCING STEEL: ASTM A 615 Grade 60 (min.), bare (if required)



**DISPLAY BOARD FOUNDATION DETAIL**  
ELEVATION VIEW

 <b>ALASKA RAILROAD CORPORATION</b> ENGINEERING SERVICES P.O. BOX 107500, ANCHORAGE, ALASKA 99510-7500		
PROJECT : <b>ARRC Transit Enhancements ANC Historic Depot: Pedestrian Upgrades</b>		
TITLE: <b>Display Board Foundation Modifications</b>		
DESIGNED BY: BAO	SCALE : AS NOTED	AFE NO.:
DRAWN BY: BAO	DATE : 6/4/2019	ACAD FILE:
CHECKED BY: GKT		DWG NO. <b>9</b> OF <b>11</b>
APPROVED BY: BJA		

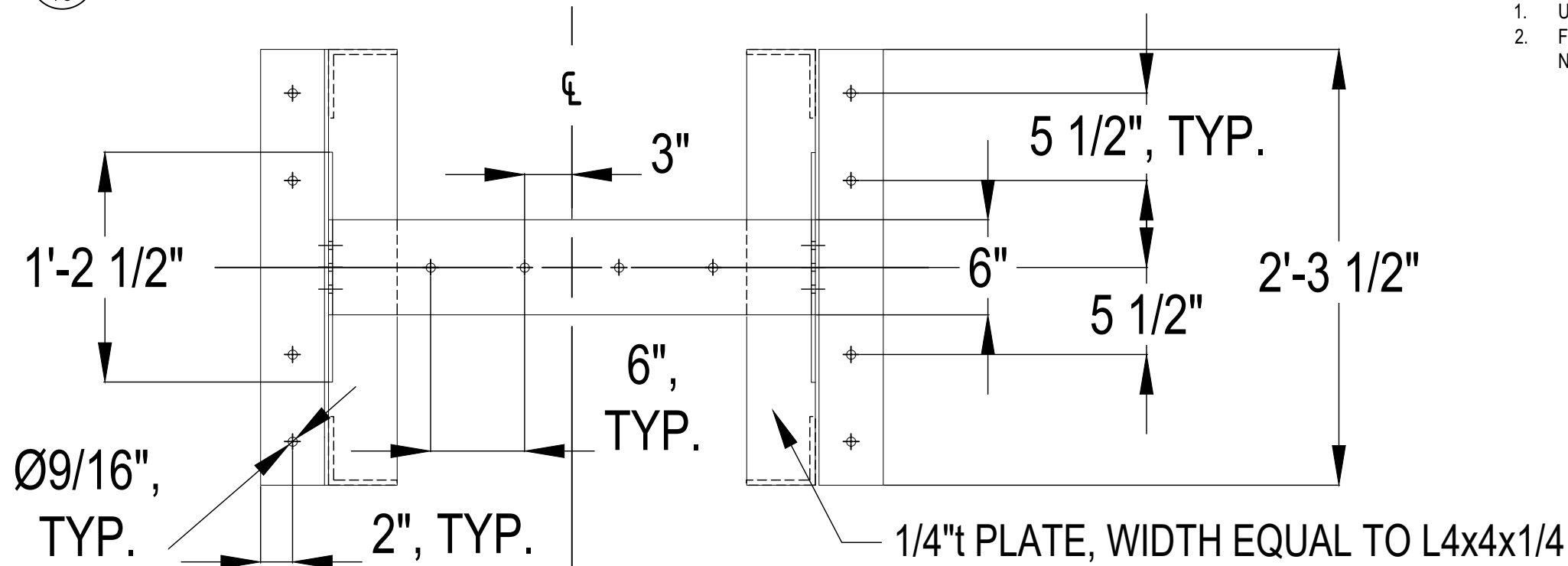
1  
10

# DISPLAY BOARD MOUNTING BRACKET DETAIL

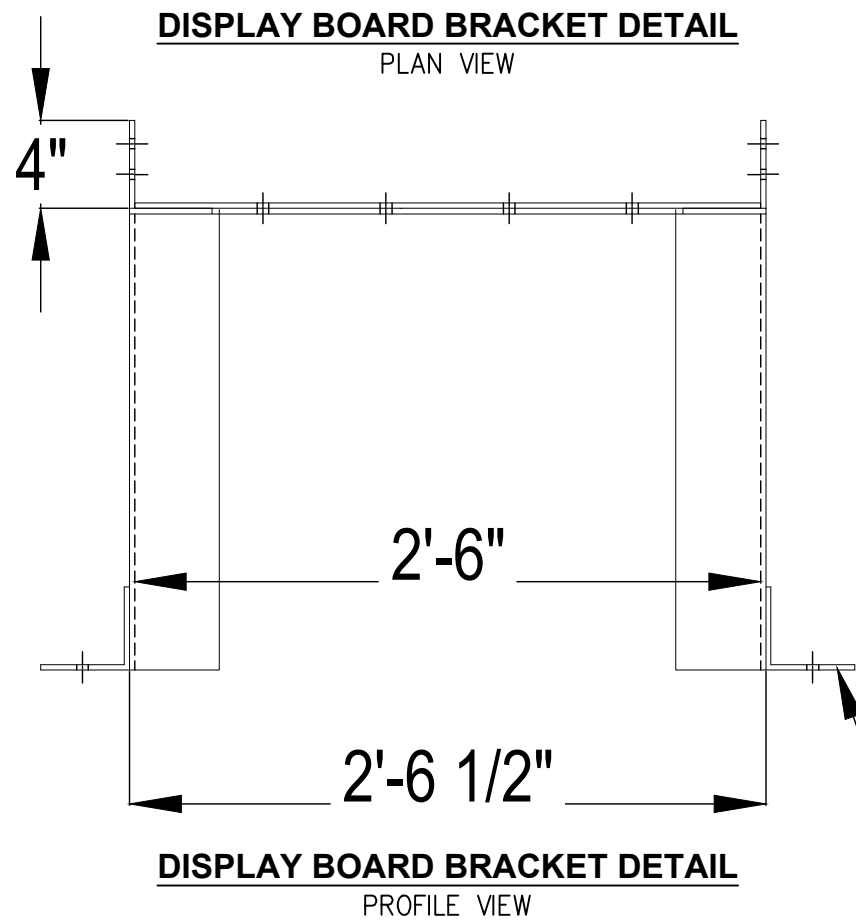
SCALE: NTS

## CONSTRUCTION NOTES:

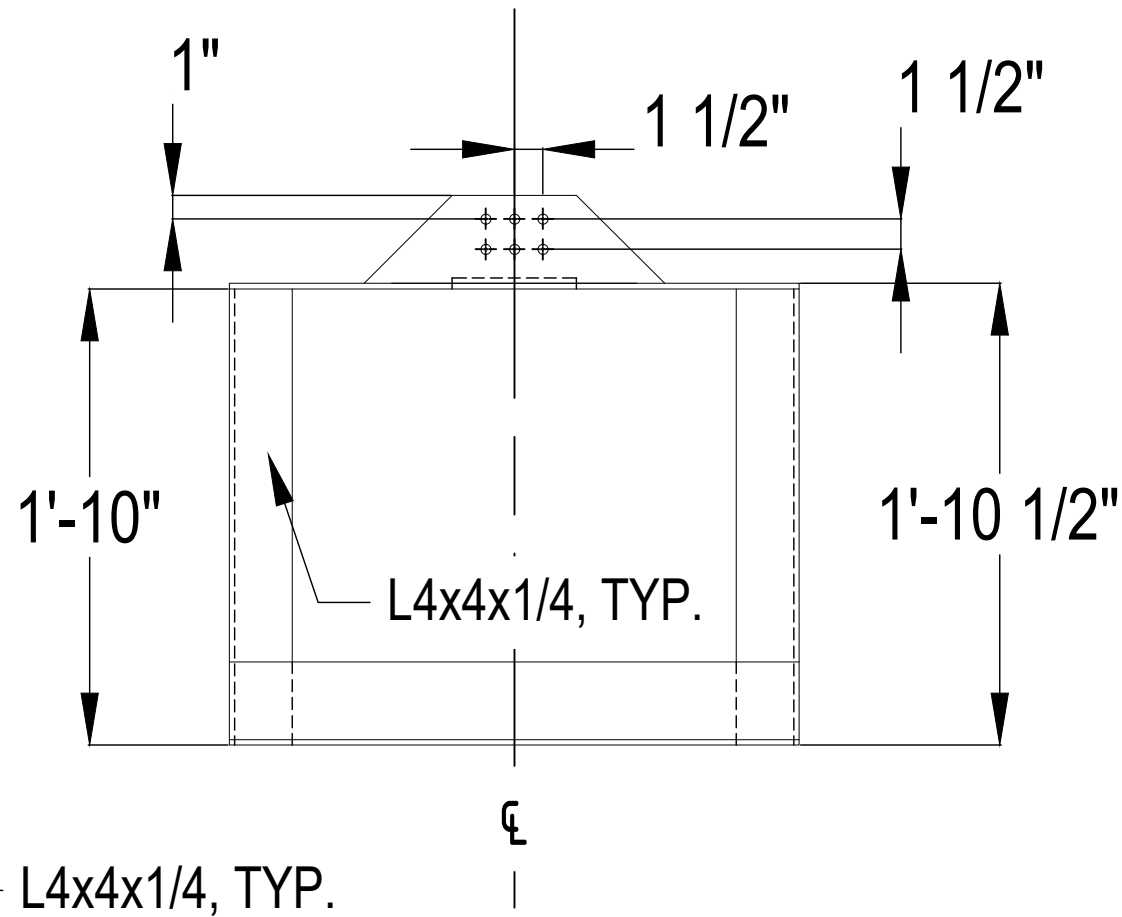
1. UNLESS NOTED OTHERWISE, ALL PLATE SHALL BE 1/4" t STEEL
2. FIELD OR SHOP WELD ALL NON-BOLTED CONNECTIONS W/ 1/4" FILLET WELDS, UNLESS NOTED OTHERWISE.




DISPLAY BOARD BRACKET DETAIL  
PLAN VIEW



DISPLAY BOARD BRACKET DETAIL  
PROFILE VIEW

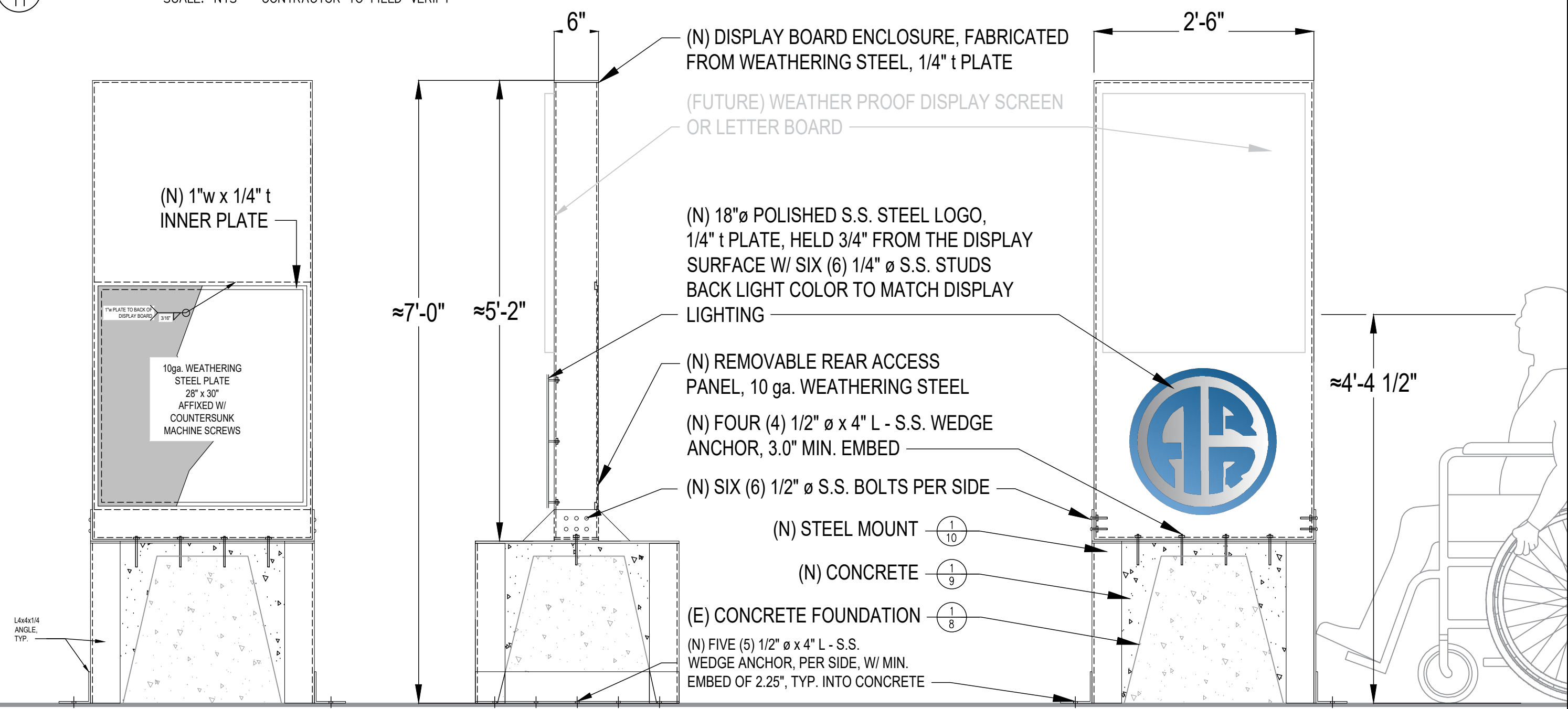


DISPLAY BOARD BRACKET DETAIL  
ELEVATION VIEW

 <b>ALASKA RAILROAD CORPORATION</b> ENGINEERING SERVICES P.O. BOX 107500, ANCHORAGE, ALASKA 99510-7500		
PROJECT : <b>ARRC Transit Enhancements ANC Historic Depot: Pedestrian Upgrades</b>		
TITLE: <b>Display Board Mounting Bracket Fabrication Details</b>		
DESIGNED BY: BAO	SCALE : AS NOTED	AFE NO.:
DRAWN BY: BAO	DATE : 6/4/2019	ACAD FILE:
CHECKED BY: GKT		DWG NO. <b>10</b> OF <b>11</b>
APPROVED BY: BJA		

# DISPLAY BOARD INSTALLATION DETAIL


SCALE: NTS - CONTRACTOR TO FIELD VERIFY



**DISPLAY BOARD INSTALLATION DETAIL**  
PROFILE VIEW - FRONT

**DISPLAY BOARD INSTALLATION DETAIL**  
ELEVATION VIEW

**DISPLAY BOARD INSTALLATION DETAIL**  
PROFILE VIEW - REAR

 <b>ALASKA RAILROAD CORPORATION</b> ENGINEERING SERVICES P.O. BOX 107500, ANCHORAGE, ALASKA 99510-7500		
PROJECT : <b>ARRC Transit Enhancements ANC Historic Depot: Pedestrian Upgrades</b>		
TITLE: <b>Display Board Installation Detail</b>		
DESIGNED BY: BAO	SCALE : AS NOTED	AFE NO.:
DRAWN BY: BAO	DATE : 6/4/2019	ACAD FILE:
CHECKED BY: GKT		DWG NO. <b>11</b> OF <b>11</b>
APPROVED BY: BJA		