

ARRC COAL DOCK

ARRC PASSENGER DOCK

ARRC MARINE TERMINAL BUILDING

ARRC FREIGHT DOCK

HAUL ROUTE OPTION ~2666.0 FT
FREIGHT DOCK TO STOCKPILE

ARRC MAINLINE

LEIRER ROAD

ASPEN LANE

SEWARD HIGHWAY

AIRPORT ROAD

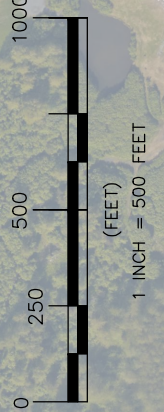
ARRC TRACK #1


BALLAST STOCK PILE AREA

ARMOR/FILTER ROCK STOCKPILE AREA

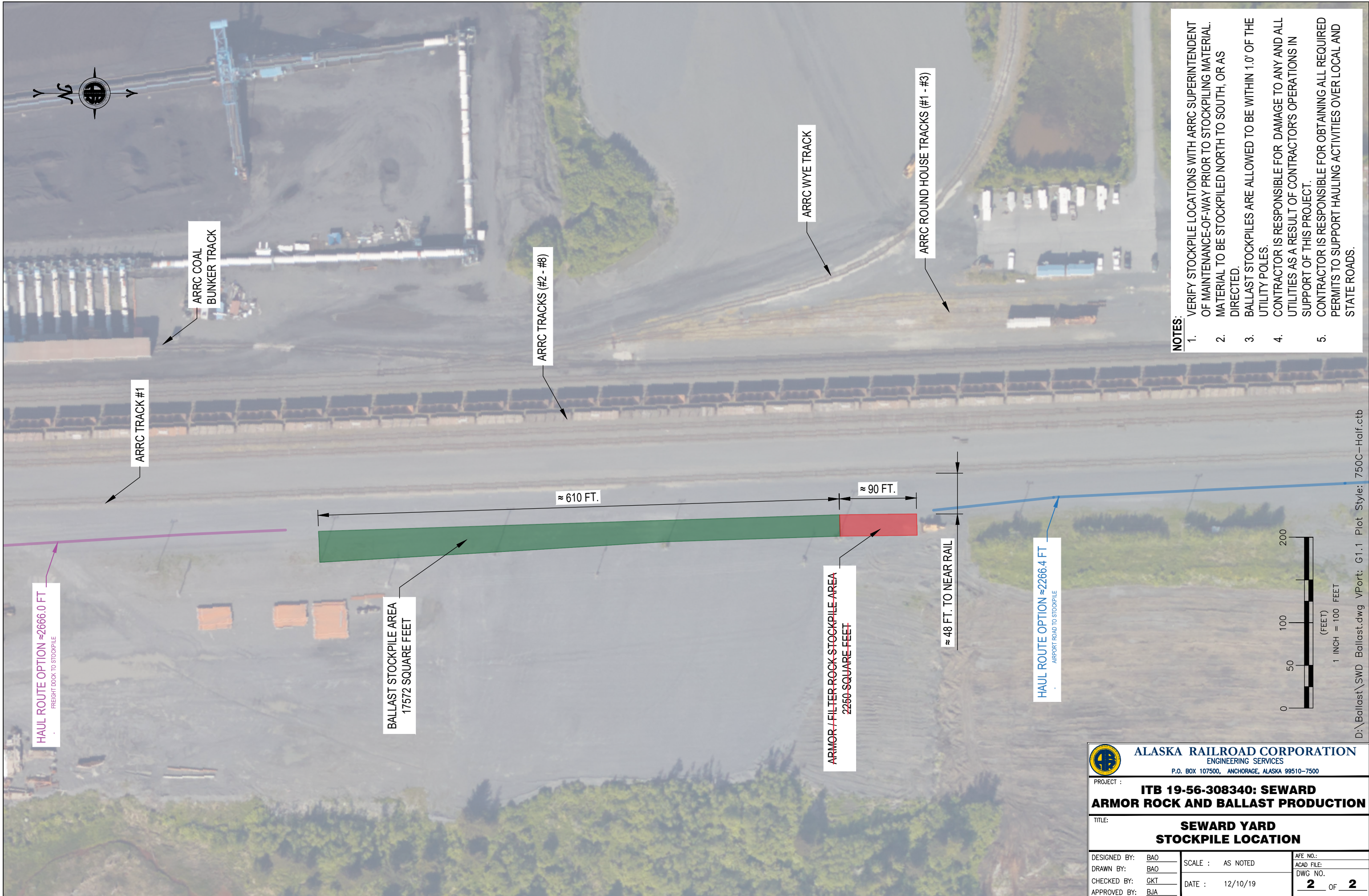
ARRC ACCESS GATE

HAUL ROUTE OPTION ~2266.4 FT
AIRPORT ROAD TO STOCKPILE




 ALASKA RAILROAD CORPORATION ENGINEERING SERVICES P.O. BOX 107500, ANCHORAGE, ALASKA 99510-7500		
PROJECT : ITB 19-56-308340: SEWARD ARMOR ROCK AND BALLAST PRODUCTION		
TITLE: SEWARD YARD VICINITY MAP		
DESIGNED BY: BAO	SCALE : AS NOTED	AFE NO.:
DRAWN BY: BAO	DATE : 12/10/19	ACAD FILE:
CHECKED BY: GKT		DWG NO. 1 OF 2
APPROVED BY: BJA		

D:\Ballast\SWD Ballast.dwg VPort: G.1.0 Plot Style: 750C-Half.ctb



- NOTES:**
1. VERIFY STOCKPILE LOCATIONS WITH ARRC SUPERINTENDENT OF MAINTENANCE-OF-WAY PRIOR TO STOCKPILING MATERIAL.
 2. MATERIAL TO BE STOCKPILED NORTH TO SOUTH, OR AS DIRECTED.
 3. BALLAST STOCKPILES ARE ALLOWED TO BE WITHIN 1.0' OF THE UTILITY POLES.
 4. CONTRACTOR IS RESPONSIBLE FOR DAMAGE TO ANY AND ALL UTILITIES AS A RESULT OF CONTRACTOR'S OPERATIONS IN SUPPORT OF THIS PROJECT.
 5. CONTRACTOR IS RESPONSIBLE FOR OBTAINING ALL REQUIRED PERMITS TO SUPPORT HAULING ACTIVITIES OVER LOCAL AND STATE ROADS.



 ALASKA RAILROAD CORPORATION ENGINEERING SERVICES P.O. BOX 107500, ANCHORAGE, ALASKA 99510-7500		
PROJECT :		
ITB 19-56-308340: SEWARD ARMOR ROCK AND BALLAST PRODUCTION		
TITLE:		
SEWARD YARD STOCKPILE LOCATION		
DESIGNED BY:	BAO	AFE NO.:
DRAWN BY:	BAO	ACAD FILE:
CHECKED BY:	GKT	DWG NO.
APPROVED BY:	BJA	2 OF 2
SCALE :	AS NOTED	
DATE :	12/10/19	

D:\Ballast\SWD Ballast.dwg VPort: G1.1 Plot Style: 750C-Half.ctb