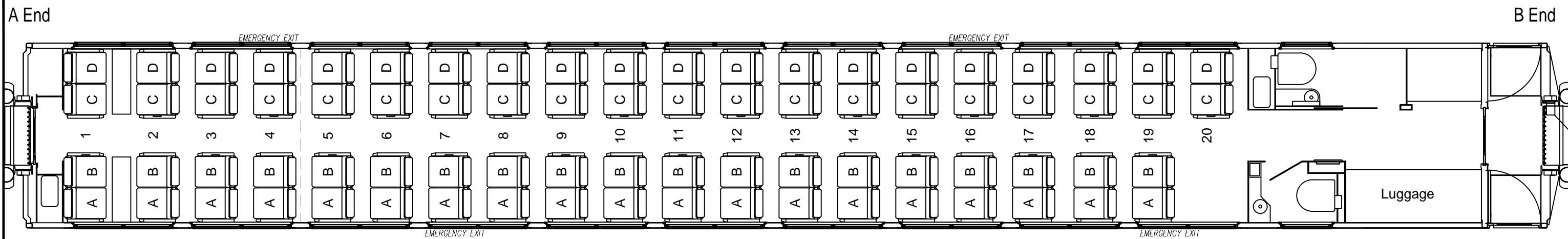



P:\Engineering\ACAD\PASSENGER COACHES\Passenger Equipment Rehab\2020 ARR 205-207 (DHI) Interior Refresh\ARR 205-207 (DHI) Reupholstery\Design & SOW\ARR 205-210 Upholstery.dwg, 750C-Half.ctb



ARR 205-210 SEAT ARRANGEMENT

NOTES:

1. ARRC TO DISCONNECT ALL SEAT BOLTS AND WIRING AND LEAVE SEATS IN PLACE.
2. CONTRACTOR TO LABEL SEAT FRAMES PER SEATING ARRANGEMENT DRAWING FOR REINSTALLATION INTO ORIGINAL LOCATION OF ORIGINAL COACH.
3. EACH COACH CAR HAS 39 SEAT FRAMES TOTAL, REQUIRING 2 CUSHION SETS EACH.
4. SEAT FRAMES 1 A-B & C-D FACE CAR B-END, ALL OTHERS FACE A-END.
5. BULKHEAD SEAT FRAMES 1 A-B, 1 C-D & 20 C-D DO NOT HAVE UNDER SEAT LUGGAGE BARS INSTALLED.

 <b>ALASKA RAILROAD CORPORATION</b> ENGINEERING SERVICES P.O. BOX 107500, ANCHORAGE, ALASKA 99510-7500		
PROJECT : <b>MOTIVE POWER AND EQUIPMENT PASSENGER EQUIPMENT</b>		
TITLE: <b>ARR 205 - 210 COACHES SEAT ARRANGEMENT</b>		
DESIGNED BY: ARRC	SCALE : NTS	AFE NO.:
DRAWN BY: ARRC	DATE : 11/10/20	ACAD FILE:
CHECKED BY: ARRC		DWG NO. <b>1</b> OF <b>4</b>
APPROVED BY: ARRC		



ARR 205



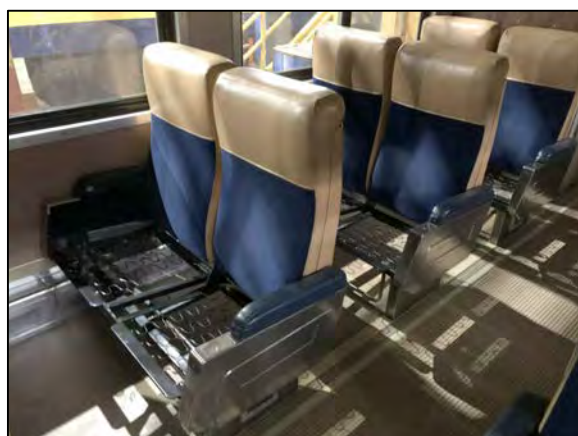
ARR 206



ARR 207



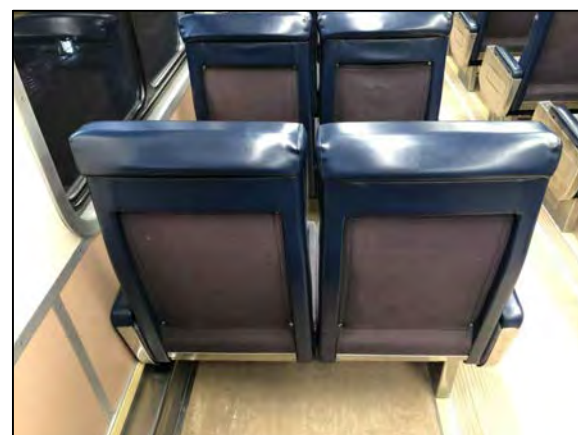
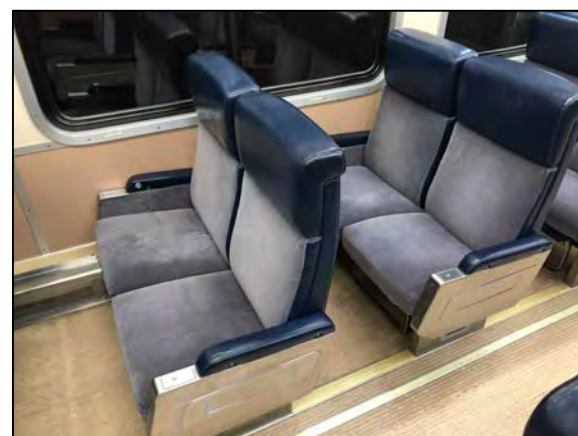
ARR 208




ARR 209



ARR 210



NOTE:  
 1. SEAT BOTTOM CUSHIONS FOR ARR 205-208 NOT PICTURED BUT ARE INCLUDED IN THIS CONTRACT.

 <b>ALASKA RAILROAD CORPORATION</b> ENGINEERING SERVICES P.O. BOX 107500, ANCHORAGE, ALASKA 99510-7500		
PROJECT : <b>MOTIVE POWER AND EQUIPMENT PASSENGER EQUIPMENT</b>		
TITLE : <b>ARR 205 - 210 COACHES EXISTING INTERIOR CONDITION</b>		
DESIGNED BY: ARRC	SCALE : NTS	AFE NO.:
DRAWN BY: ARRC	DATE : 11/10/20	ACAD FILE:
CHECKED BY: ARRC		DWG NO. <b>2</b> OF <b>4</b>
APPROVED BY: ARRC		



P:\Engineering\ACAD\PASSENGER COACHES\Passenger Equipment Rehab\2020 ARR 205-207 (DHI) Interior Refresh\ARR 205-207 (DHI) Reupholstery\Design & SOW\ARR 205-210 Upholstery.dwg, 750C-Half.ctb



ITEM 1c: NEW SECTIONED BACK/HEADREST SEAT CUSHIONS

ITEM 1c: ARRC FABRIC. MULTI-COLOR

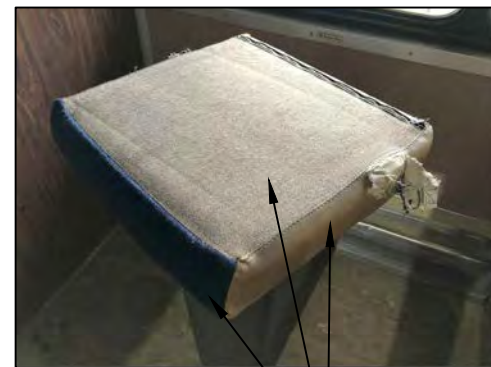
ITEM 1c: ARRC IMITATION LEATHER, "BUCKWHEAT"

ITEM 1d: ARRC IMITATION LEATHER, "BUCKWHEAT". BOTH SIDES.

ITEM 1e: ARRC IMITATION LEATHER, "BUCKWHEAT". BOTH SIDES.



ITEM 1c: ARRC IMITATION LEATHER, "BUCKWHEAT"



ITEM 1c: ARRC IMITATION LEATHER, "BUCKWHEAT"



ITEM 1i: NEW SEAT BOTTOM ZIGZAG SPRING C-CLIPS WHERE MISSING.


ITEM 1h: NEW SEAT BOTTOM ZIGZAG SPRINGS WHERE DAMAGED.



ITEM 1c: ARRC IMITATION LEATHER, "BUCKWHEAT"

ITEM 1g: NEW SEATBACK CARPET INSERTS


ITEM 1f: ARRC IMITATION LEATHER, "BUCKWHEAT"

 <b>ALASKA RAILROAD CORPORATION</b> ENGINEERING SERVICES P.O. BOX 107500, ANCHORAGE, ALASKA 99510-7500		
PROJECT : <b>MOTIVE POWER AND EQUIPMENT PASSENGER EQUIPMENT</b>		
TITLE: <b>ARR 205 - 208 COACHES SCOPE OF WORK</b>		
DESIGNED BY: ARRC	SCALE : NTS	AFE NO.:
DRAWN BY: ARRC	DATE : 11/10/20	ACAD FILE:
CHECKED BY: ARRC		DWG NO. <b>3</b> OF <b>4</b>
APPROVED BY: ARRC		

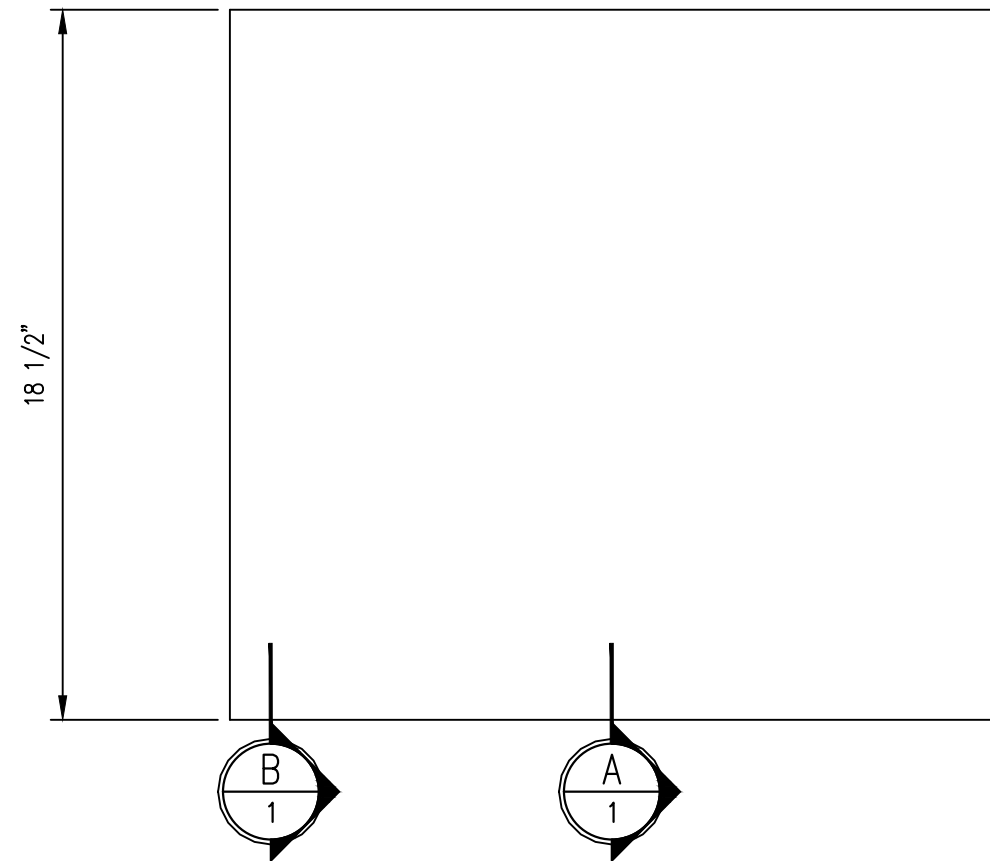
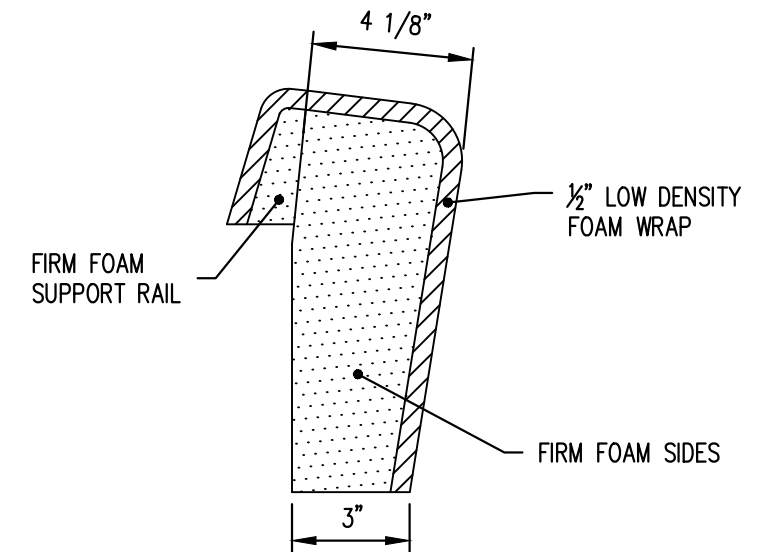
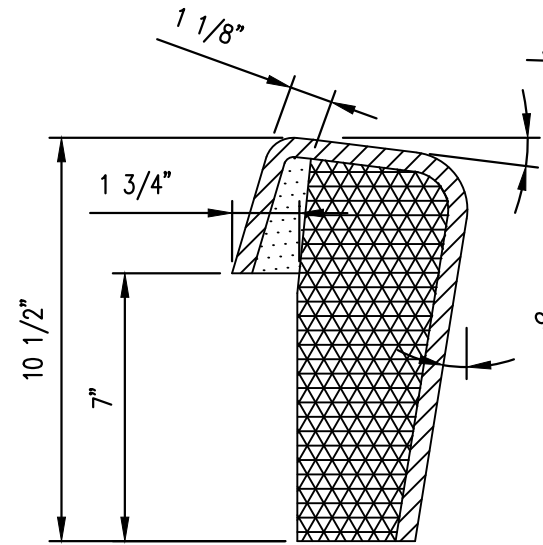
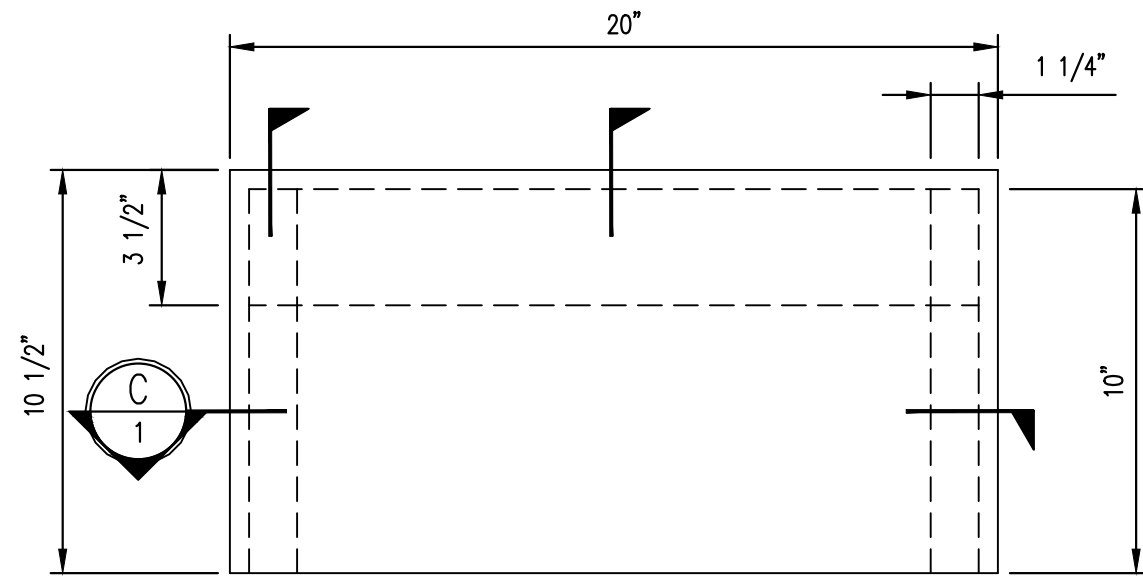


P:\Engineering\ACAD\PASSENGER COACHES\Passenger Equipment Rehab\2020 ARR 205-207 (DHI) Interior Refresh\ARR 205-207 (DHI) Reupholstery\Design & SOW\ARR 205-210 Upholstery.dwg, 750C-Half.ctb



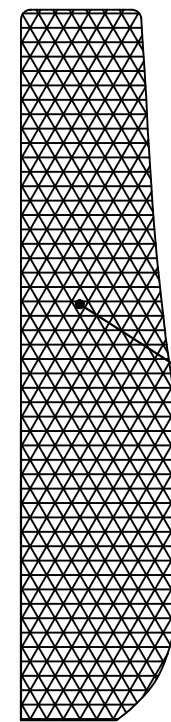
 <b>ALASKA RAILROAD CORPORATION</b> ENGINEERING SERVICES P.O. BOX 107500, ANCHORAGE, ALASKA 99510-7500		
PROJECT : <b>MOTIVE POWER AND EQUIPMENT PASSENGER EQUIPMENT</b>		
TITLE: <b>ARR 209 &amp; 210 COACHES SCOPE OF WORK</b>		
DESIGNED BY: ARRC	SCALE : NTS	AFE NO.:
DRAWN BY: ARRC	DATE : 11/10/20	ACAD FILE:
CHECKED BY: ARRC		DWG NO. <b>4</b> OF <b>4</b>
APPROVED BY: ARRC		

P:\Engineering\ACAD\PASSENGER COACHES\Passenger Equipment Rehab\2020 ARR 205-207 (DHI) Interior Refresh\ARR 205-207 (DHI) Repolishy\Design & SOW\DHI Coach Cushion Replacement V2.dwg VPort: Layout1 Rev2 Plot Style: 750C-Half.ctb



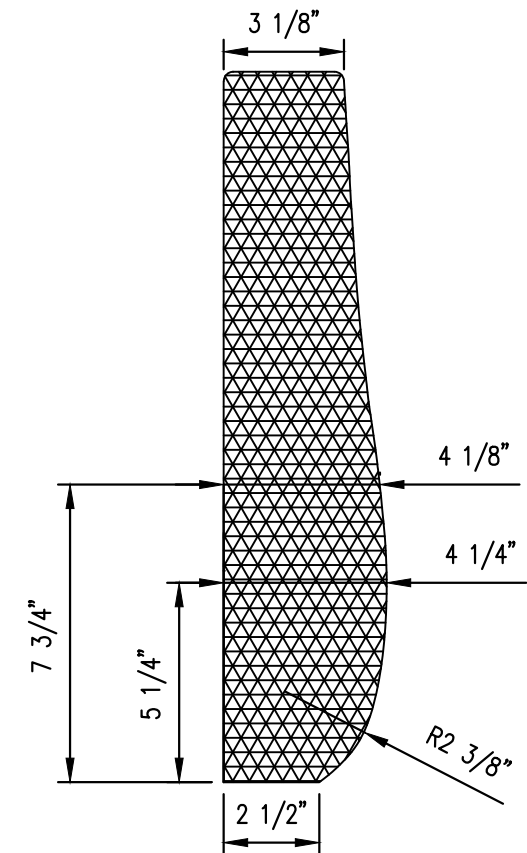
FRONT VIEW

SCALE: 1:5



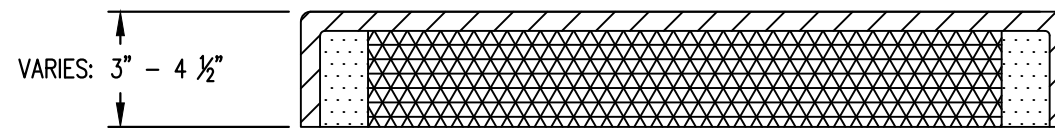
SECTION A

SCALE: 1:5



SECTION B

SCALE: 1:5




SECTION C

SCALE: 1:5

NOTES:

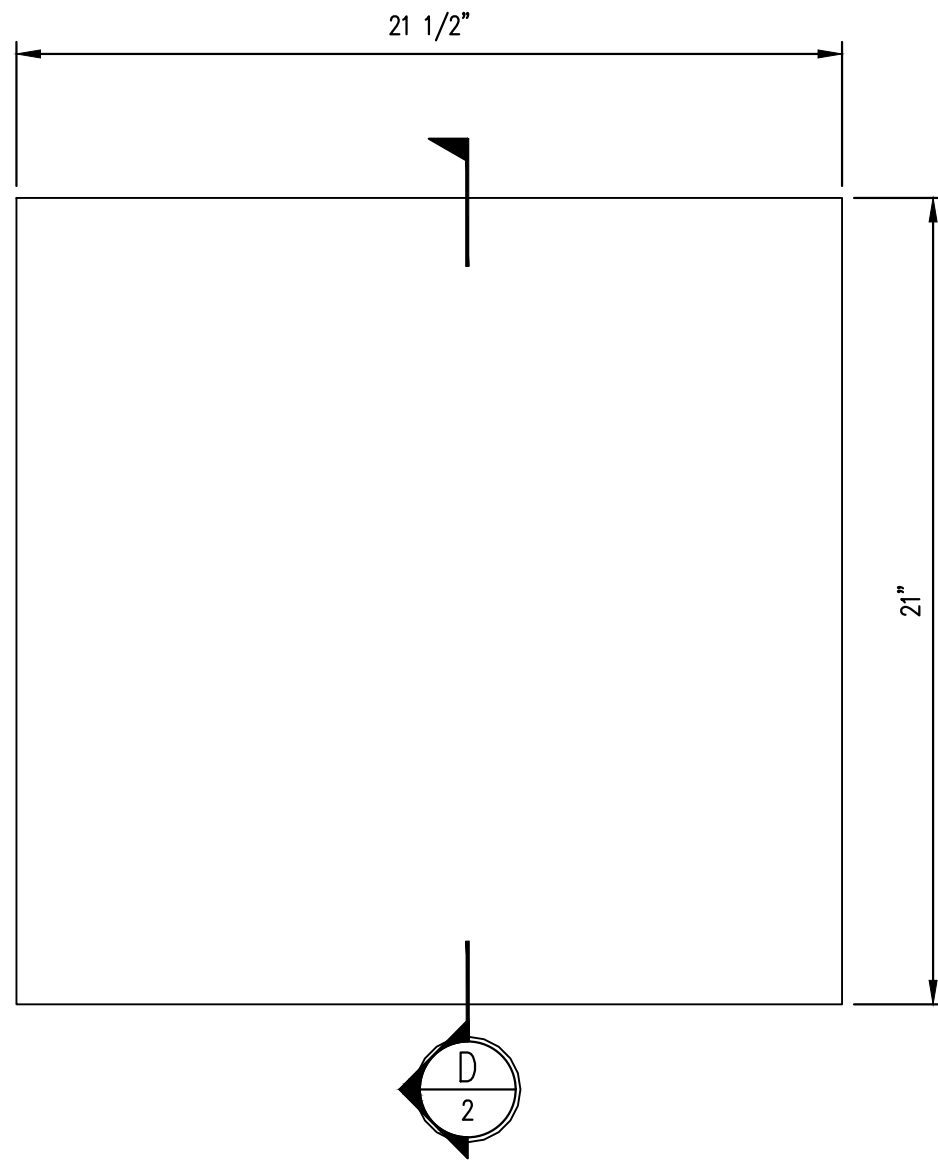
1. ALL MATERIALS MUST MEET 49 CFR APPENDIX B TO PART 238 - TEST METHODS AND PERFORMANCE CRITERIA FOR THE FLAMMABILITY AND SMOKE EMISSION CHARACTERISTICS OF MATERIALS USED IN PASSENGER CARS AND LOCOMOTIVE CABS.

REV.	DATE	BY	REVISION

 <b>ALASKA RAILROAD CORPORATION</b> ENGINEERING SERVICES P.O. BOX 107500, ANCHORAGE, ALASKA 99510-7500		
PROJECT :		
<b>MOTIVE POWER &amp; EQUIPMENT DHI COACH SEAT CUSHIONS</b>		
TITLE:		
<b>SEAT BACK FRONT AND SECTION VIEWS</b>		
DESIGNED BY: CDL	SCALE : 1'0" = 5'0"	AFE NO.:
DRAWN BY: CDL	DATE : 11/4/2020	ACAD FILE:
CHECKED BY:		DWG NO.
APPROVED BY:		<b>1</b> OF <b>2</b>

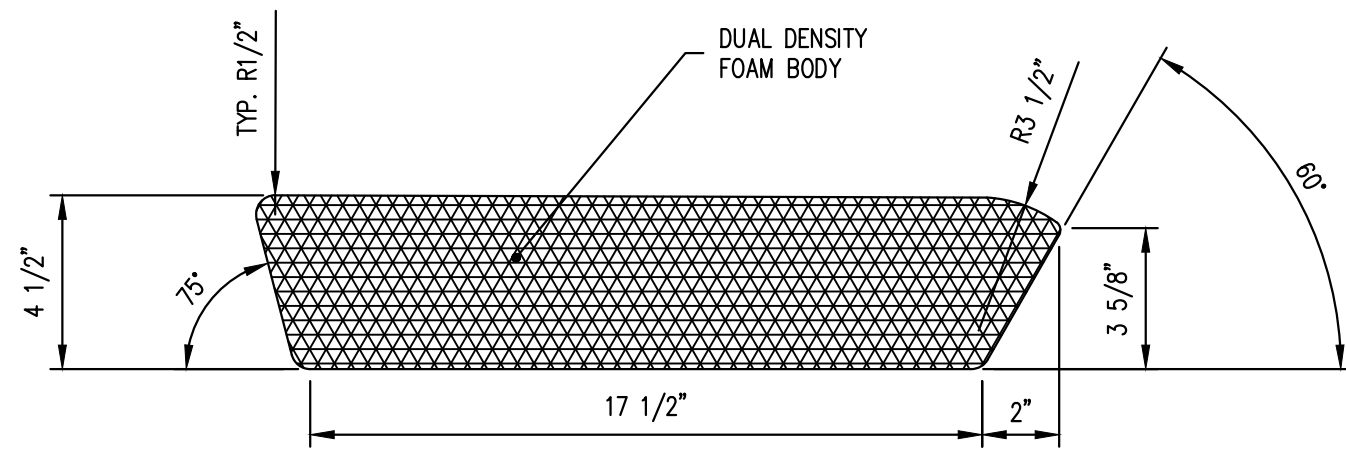


P:\Engineering\ACAD\PASSENGER COACHES\Passenger Equipment Rehab\2020 ARR 205-207 (DHI) Interior Refresh\ARR 205-207 (DHI) Coach Cushion Replacement V2.dwg VPort: Layout 2 Plot Style: 750C-Half.ctb



**TOP VIEW**

SCALE: 1:5




**SECTION D**

SCALE: 1:5

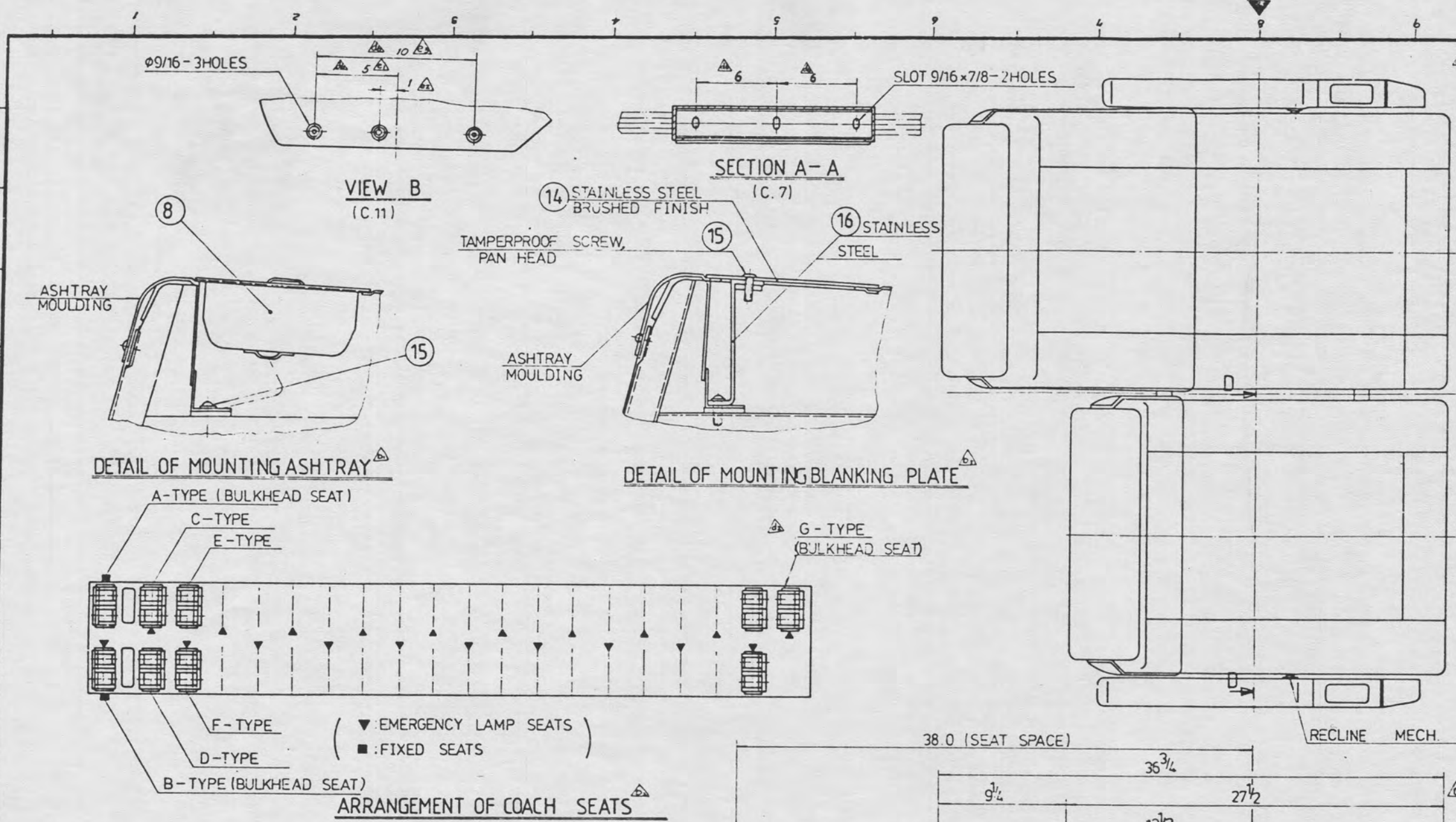
**NOTES:**

1. ALL MATERIALS MUST MEET 49 CFR APPENDIX B TO PART 238 – TEST METHODS AND PERFORMANCE CRITERIA FOR THE FLAMMABILITY AND SMOKE EMISSION CHARACTERISTICS OF MATERIALS USED IN PASSENGER CARS AND LOCOMOTIVE CABS.
2. IFD MEASURED PER ASTM D3574, TEST B1.

REV.	DATE	BY	REVISION

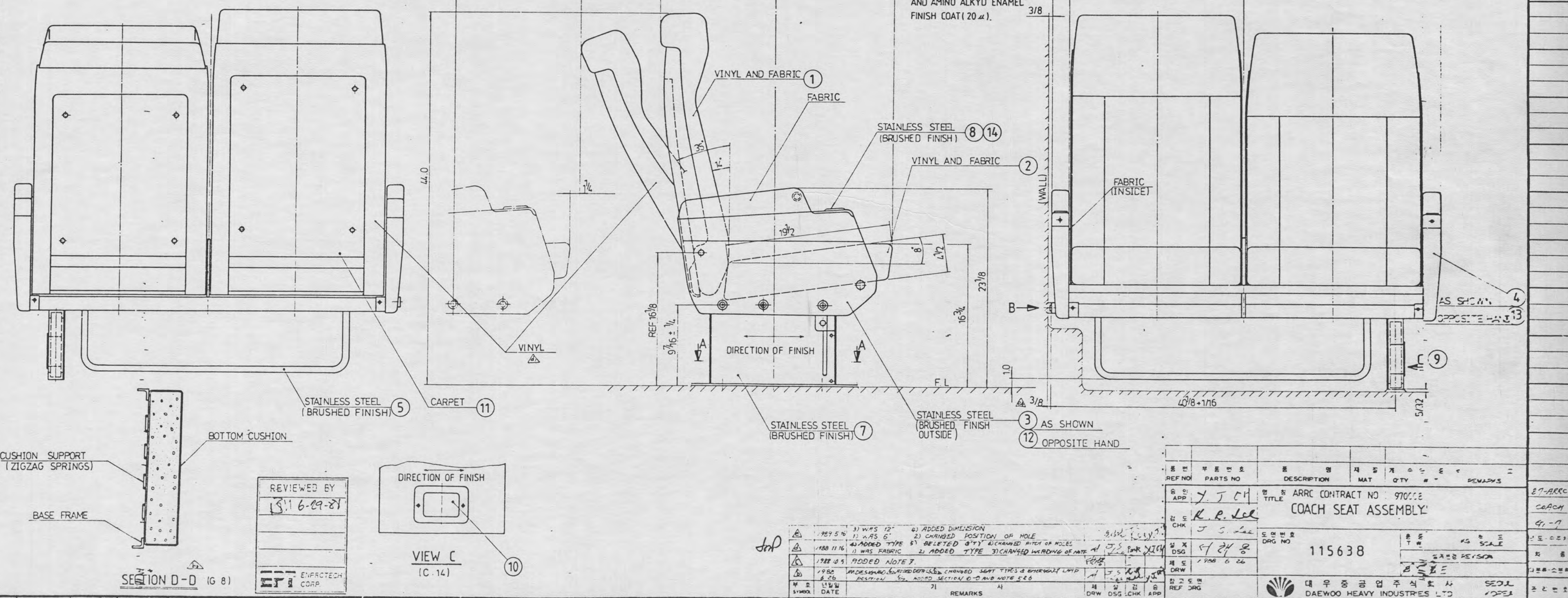
 <b>ALASKA RAILROAD CORPORATION</b> ENGINEERING SERVICES P.O. BOX 107500, ANCHORAGE, ALASKA 99510-7500		
PROJECT : <b>MOTIVE POWER &amp; EQUIPMENT DHI COACH SEAT CUSHIONS</b>		
TITLE: <b>SEAT BOTTOM TOP AND SECTION VIEWS</b>		
DESIGNED BY: <u>ARRC</u>	SCALE : 1'0" = 5'0"	AFE NO.:
DRAWN BY: <u>CDL</u>	DATE : 11/4/2020	ACAD FILE:
CHECKED BY: _____		DWG NO. <b>2</b> OF <b>2</b>
APPROVED BY: _____		





G	TYPE	A	B	C	D	E	F	NO	PART NO	PART NAME	STANDARD	MAT'L	QTY	WT.	REMARKS
2		2	2	2	2	2	2	1		BACKREST CUSHION		ASS'Y			
2		2	2	2	2	2	2	2		BOTTOM CUSHION		ASS'Y			
1			1	1		1		3		SIDE (R H)		ASS'Y			
1			1	1		1		4		SIDE (L H)		ASS'Y			
				1	1	1	1	5		LUGGAGE BAR		ASS'Y			
2				2	2	2	2	6		RECLINE MECH		ASS'Y			
1		1	1	1	1	1	1	7		PEDESTAL		ASS'Y			
2		2	2	2	2	2	2	8		ASHTRAY		ASS'Y			NO SMOKING SEAT ONLY
1		1	1	1	1	1	1	9		BASE FRAME		ASS'Y			
1				1	1			10		EMERGENCY LAMP		ASS'Y			
2		2	2	2	2	2	2	11		CARPET		ASS'Y			
1					1			12		SIDE (R H)		ASS'Y			
1					1			13		SIDE (L H)		ASS'Y			
2		2	2	2	2	2	2	14		BLANKING PLATE		ASS'Y			NO SMOKING SEAT
2		2	2	2	2	2	2	15		TAMPERPROOF SCREW PAN HEAD		S. S.			
2		2	2	2	2	2	2	16		FIXED BRACKET		ASS'Y			

- NOTES**
- FABRIC TO BE BORIS KROLL STYLE 99603X2 BOULEVARD, CONTAINING 48% WOOL 42% RAYON AND 10% NYLON, WITH A TEFLON ACRYLIC BACKED FINISH THE PATTERN IS TO REPEAT 12-7/8 HORIZONTALITY & 6-1/2 VERTICALLY.
  - THE VINYL IS TO BE TRANSPORTATION GRADE FABRIC-BACKED SUPPLIED BY RONALD CHARLES ASSOCIATES; STYLE: REPUBLIC; COLOR: HUNTER GREEN.
  - FOAM TO BE LOW SMOKE NEOPRENE. THE BACKREST CUSHION SHALL HAVE A MEDIUM DENSITY WITH AN ILD VALUE OF 35 PLUS OR MINUS 10. THE BOTTOM CUSHION SHALL HAVE A FIRM DENSITY WITH AN ILD VALUE OF 55 PLUS OR MINUS 10. THE CUSHION ASSEMBLIES, EXCEPT HEADREST, SHALL HAVE BOLSTERING ALONG THEIR EDGES TO GIVE A CRADLING EFFECT.
  - ALL MATERIALS SHALL MEET THE "RECOMMENDATIONS FOR TESTING. THE FLAMMABILITY AND SMOKE EMISSION CHARACTERISTICS OF RAIL TRANSIT VEHICLE MATERIALS" AS PUBLISHED IN THE FEDERAL REGISTER, VOLUME 49, NO. 158, PAGES 32482, THRU 32486, DATED AUGUST 14, 1984, AND FEDERAL REGISTER VOLUME 49, NO. 152, PAGES 33076 THRU 33078, DATED AUGUST 20, 1984.
  - COACH WILL BE PROVIDED 12 SEATS WITH ASHTRAYS AND 27 SEATS WITH BLANKING PLATE PER CAR
  - NO LUGGAGE BAR SHALL BE USED ON BULKHEAD SEATS.
  - CARBON STEEL SHALL BE PAINTED WITH AMINO ALKYD PRIMER (20 μ) AND AMINO ALKYD ENAMEL FINISH COAT (20 μ).



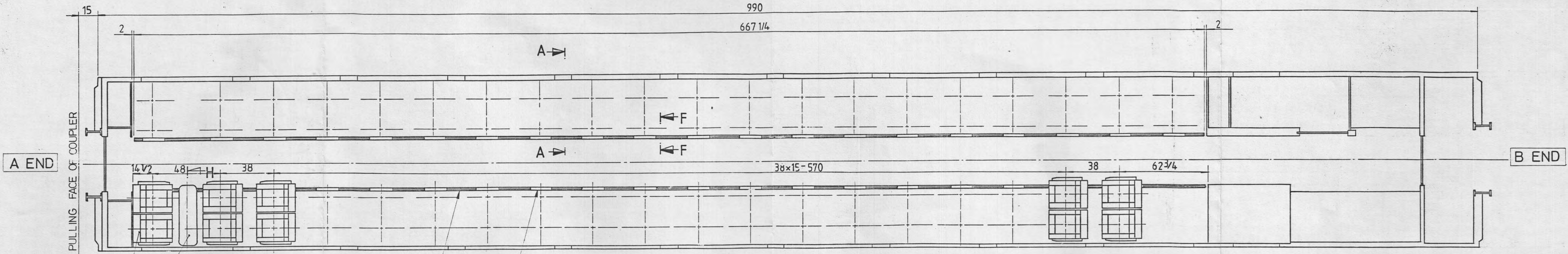
REVIEWED BY  
 15116-09-81  
 ENPROTECH CORP.

REV	DATE	DESCRIPTION	BY	CHK	APP
1	1987.5.20	1) WAS 12" 2) WAS 6"			
2	1988.11.16	1) WAS FABRIC 2) ADDED TYPE 3) CHANGED WELDING OF MAT			
3	1988.0.9	ADDED NOTE 7			
4	1988.8.26	WIDENING, REPROCESSED, CHANGED SEAT TYPE & BULKHEAD LAMP POSITION. 10. ADDED SECTION D-D AND NOTE 5-8			

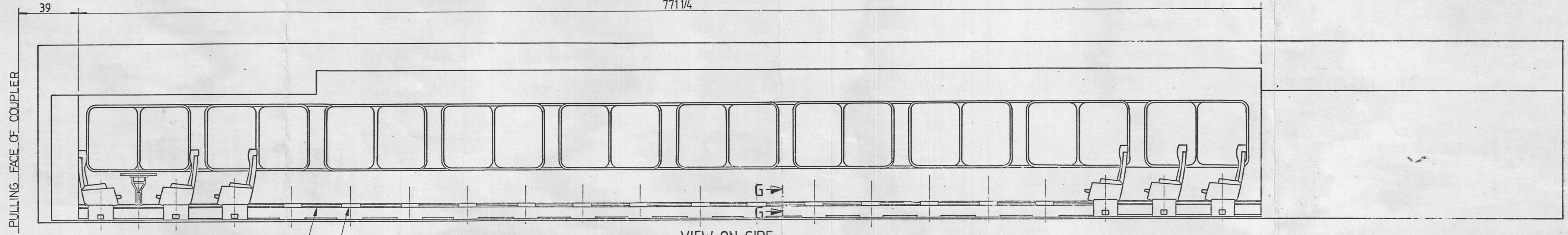
REF NO	PARTS NO	DESCRIPTION	MAT	QTY	WT.	REMARKS
1	115638	COACH SEAT ASSEMBLY				

ARRC CONTRACT NO: 970012  
 COACH SEAT ASSEMBLY  
 115638  
 DAEWOO HEAVY INDUSTRIES LTD

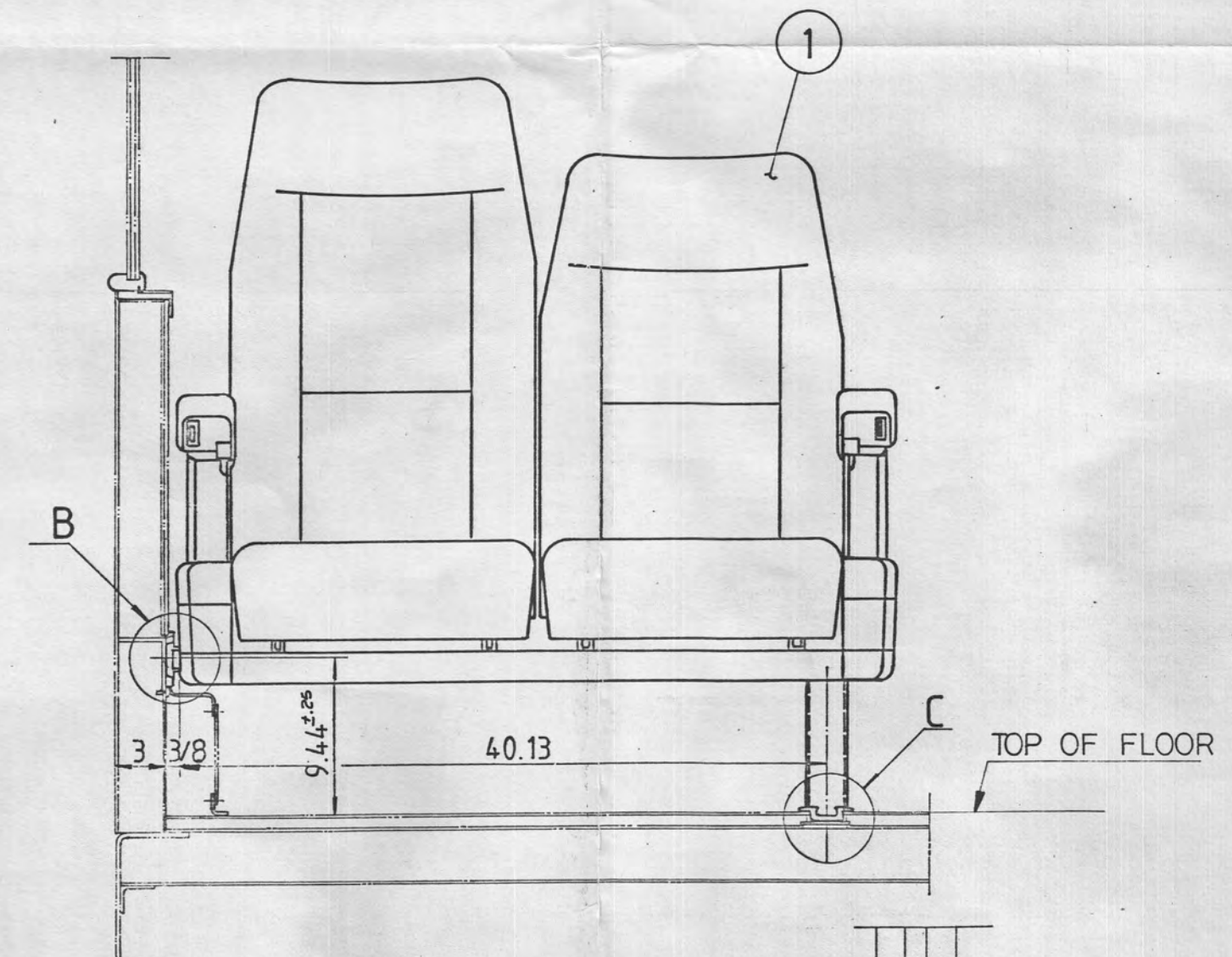




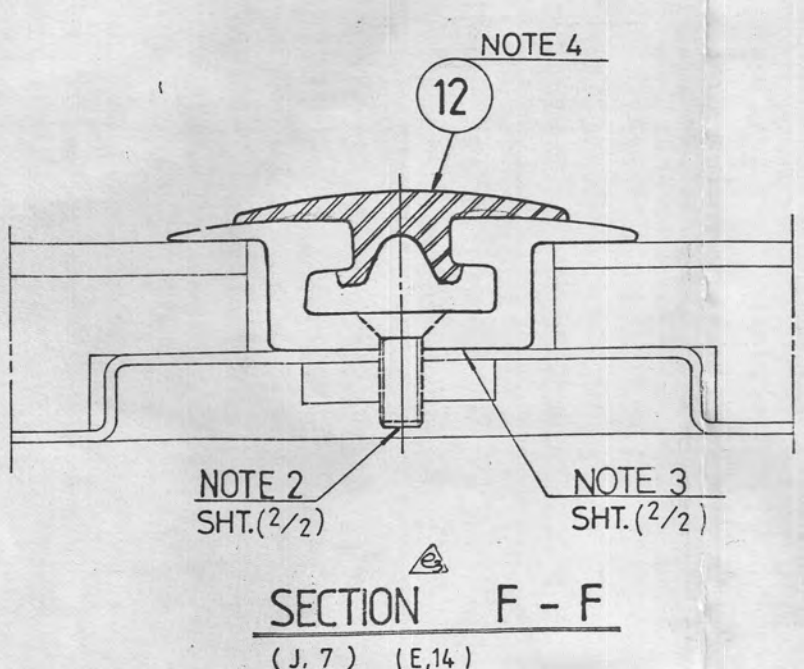
VIEW ON FLOORING  
771 1/4



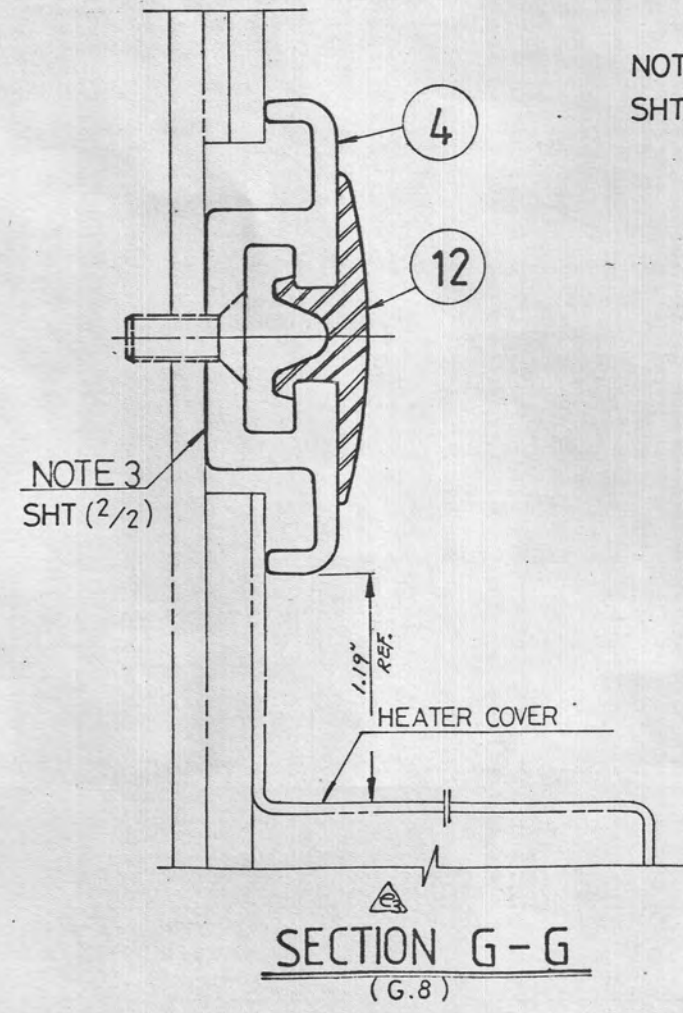
VIEW ON SIDE



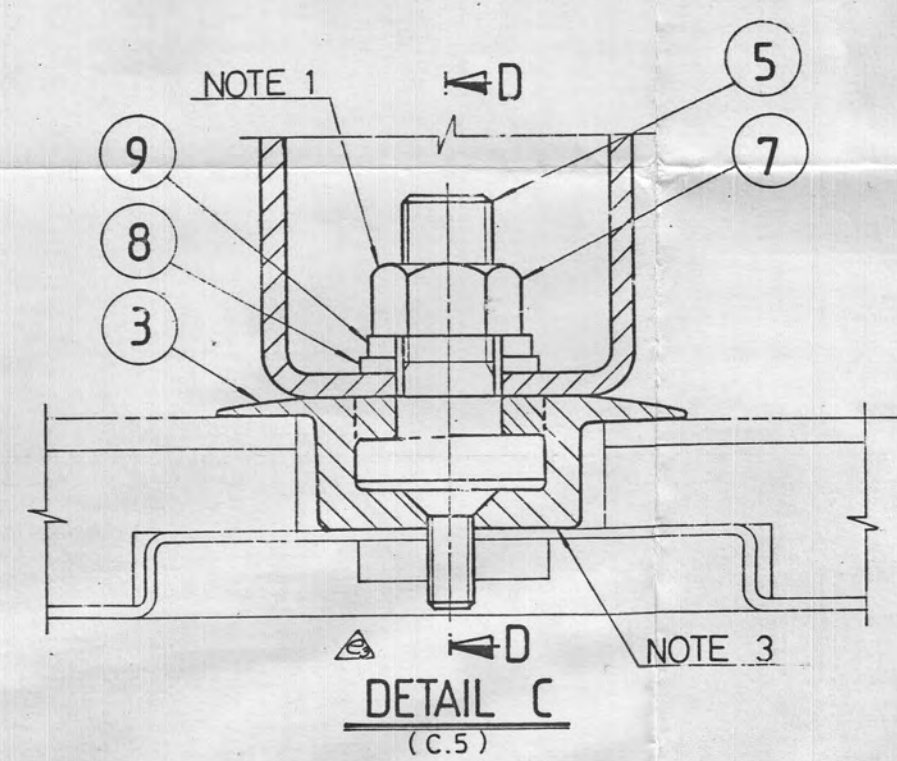
SECTION A-A  
(K.6)



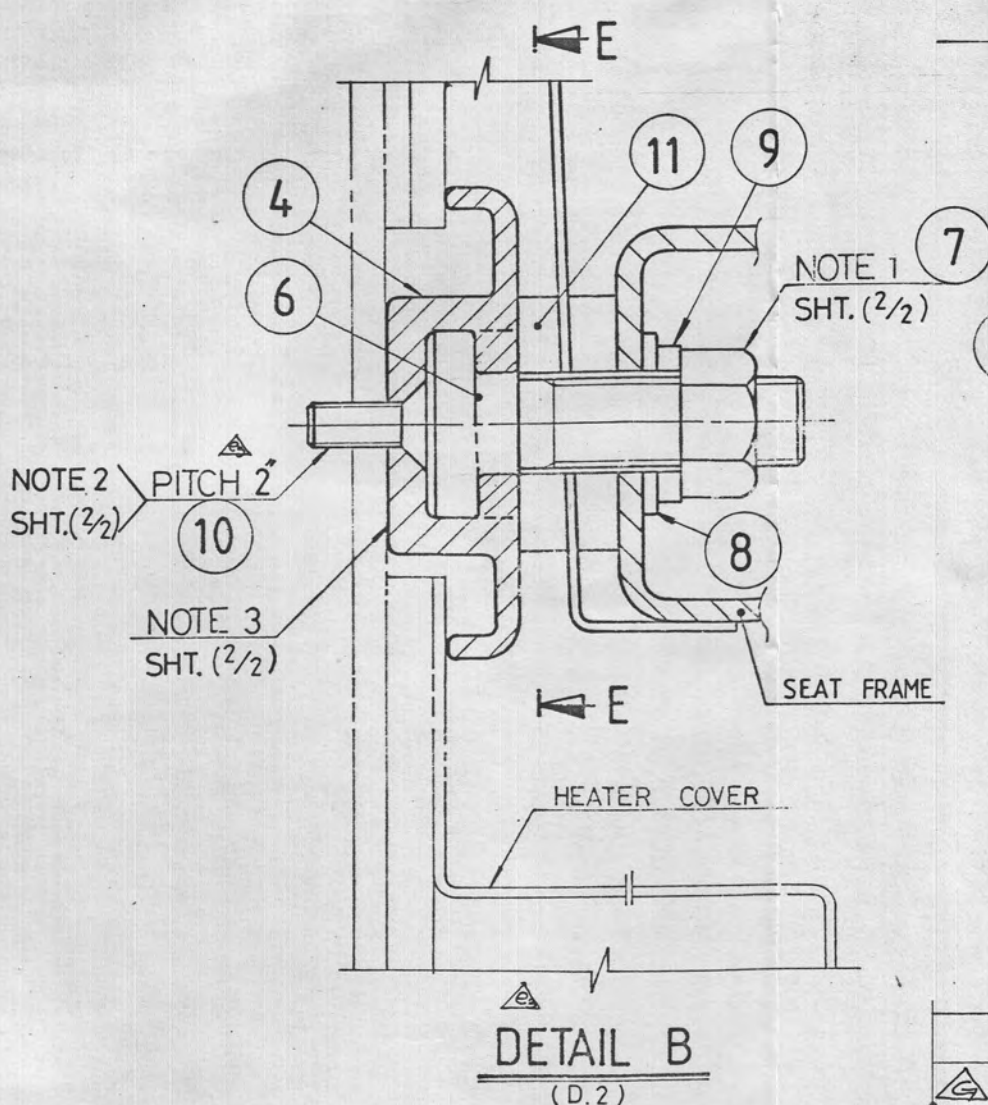
SECTION F-F  
(J.7) (E.14)



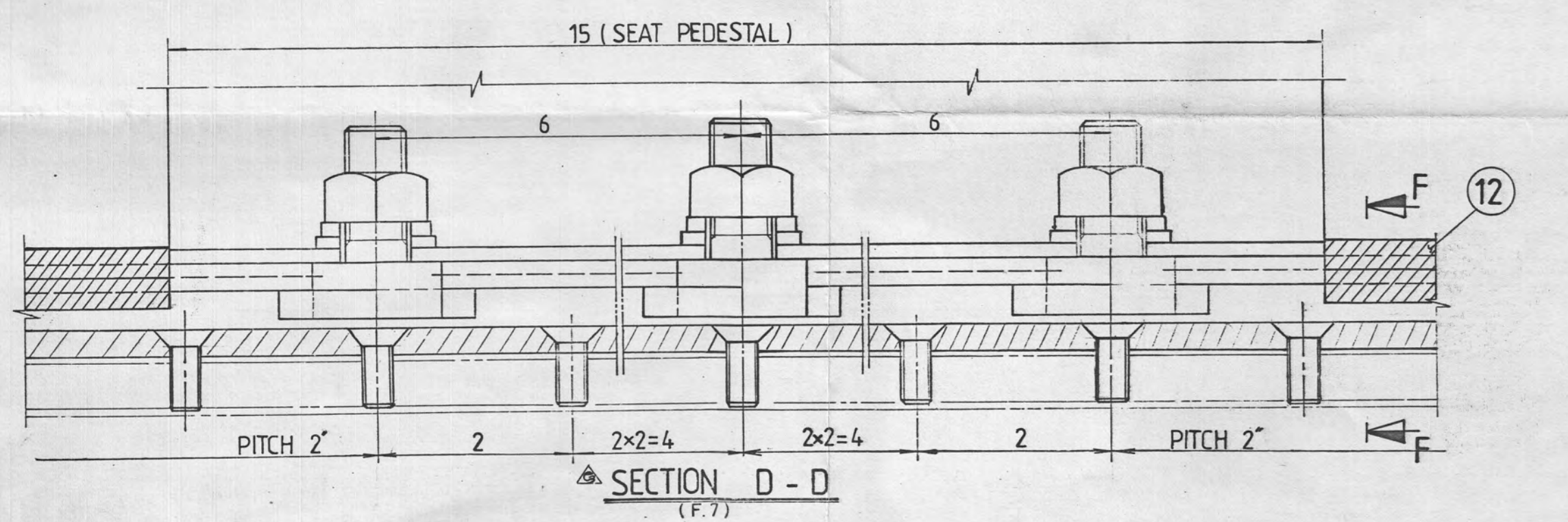
SECTION G-G  
(G.8)



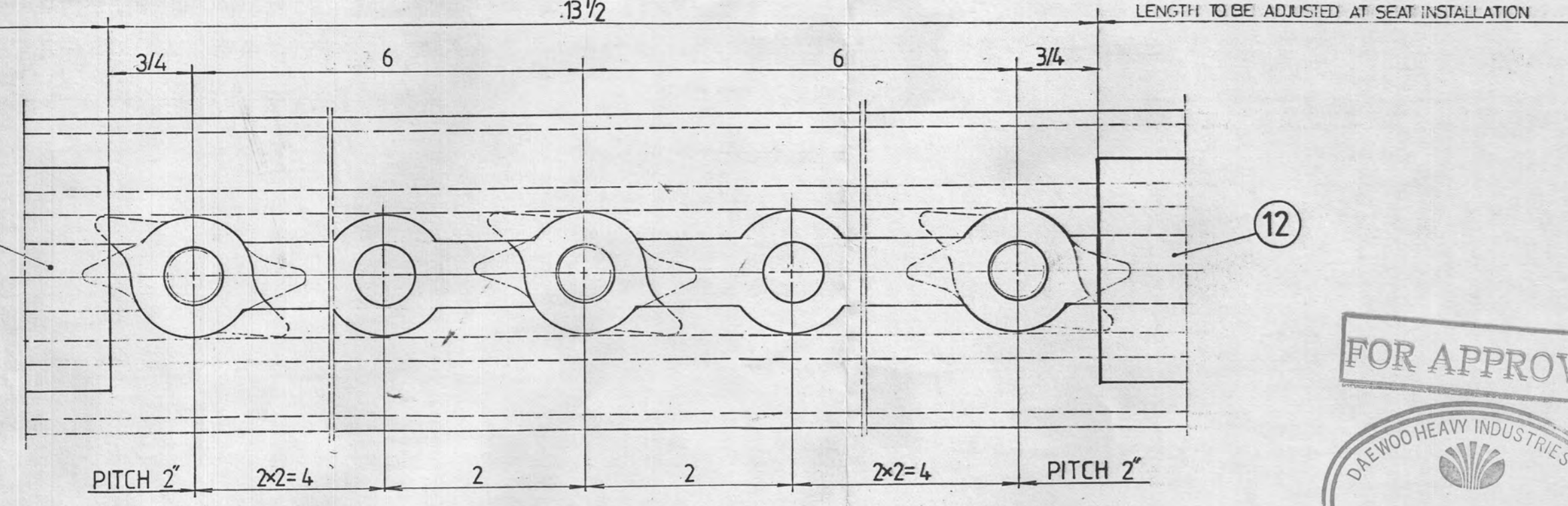
DETAIL C  
(C.5)



DETAIL B  
(D.2)



SECTION D-D  
(E.7)



SECTION E-E  
(B.7)

FOR APPROVAL  
DAEWOO HEAVY INDUSTRIES LTD.  
1989. 2. 11  
ROLLING STOCK & INDUSTRIAL  
EQUIPMENT DIV  
SEOUL KOREA

REV. NO.	DATE	REMARKS	DESIGNER	CHECKER	APPROVER	REVISION	REMARKS
1	1989. 2. 2	ADDED ITEM NO. 14, 15, 16 (ZONE NO. C-3, SHEET 1/2)					
2	1989. 4. 15	1. ADDED ITEM NO. 13 (CAPNET) 2. QTY WAS 205. 3. QTY WAS 129. 4. QTY WAS 96.					
3	1988. 12. 14	1. CHANGED CONFIGURATION OF SEAT RETAINING FASTENERS & COVER 2. ADDED NOTE 2. MODIFIED WINDOW HOODING CONFIGURATION TO ADD DIRT TRAP 3. MODIFIED THE SHAPE OF SIDE TRUCK TO 900 WAS 800					
4	1988. 7. 26	1) CHANGED THE JOINING METHOD OF CARD TABLE					
5	1988. 4. 19	REDESIGNED.					

REV. NO.	DATE	REMARKS	DESIGNER	CHECKER	APPROVER
1	1989. 2. 2				
2	1989. 4. 15				
3	1988. 12. 14				
4	1988. 7. 26				
5	1988. 4. 19				

REV. NO.	DATE	REMARKS	DESIGNER	CHECKER	APPROVER
1	1989. 2. 2				
2	1989. 4. 15				
3	1988. 12. 14				
4	1988. 7. 26				
5	1988. 4. 19				

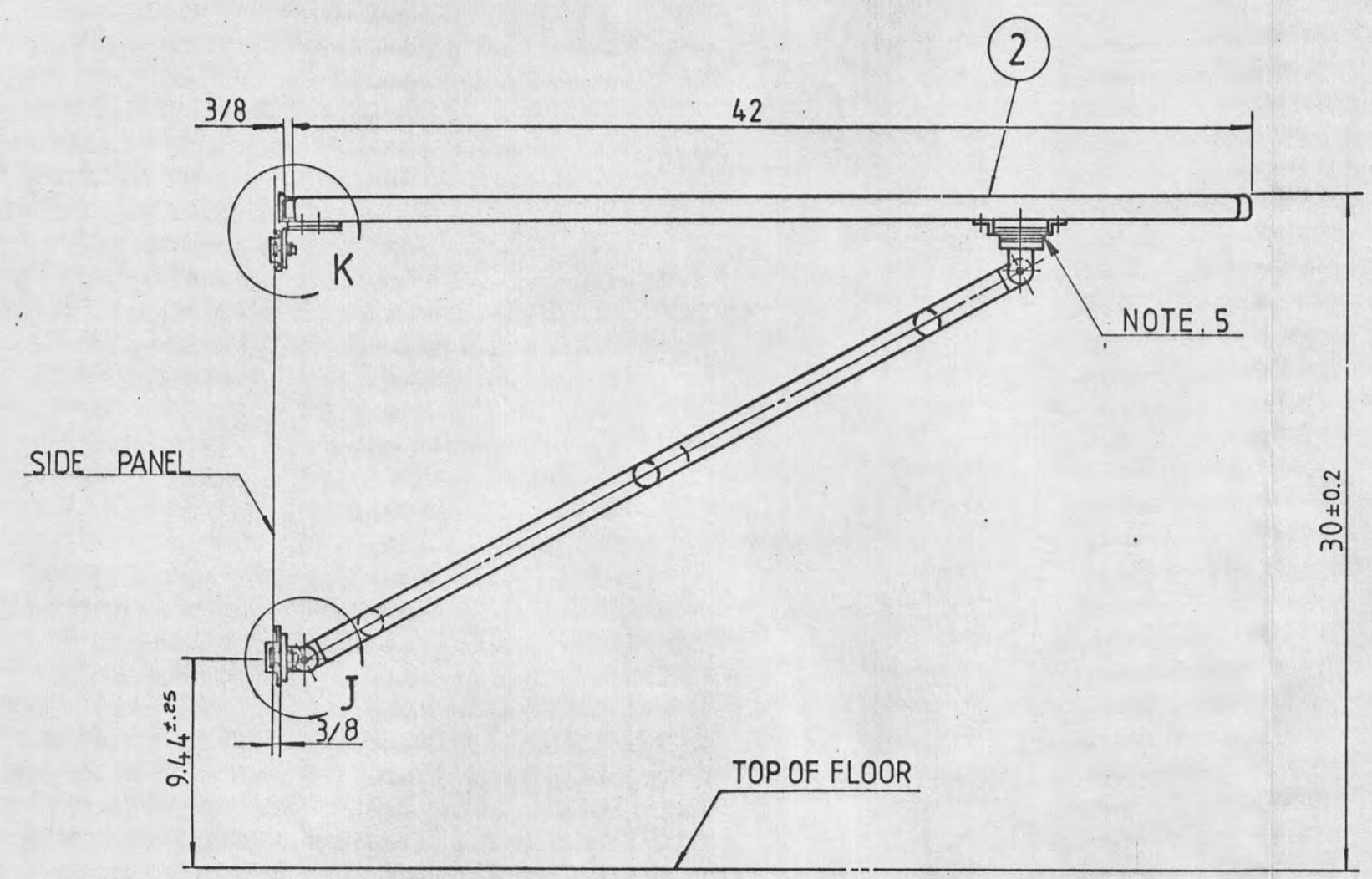
  

REV. NO.	DATE	REMARKS	DESIGNER	CHECKER	APPROVER
1	1989. 2. 2				
2	1989. 4. 15				
3	1988. 12. 14				
4	1988. 7. 26				
5	1988. 4. 19				

ARRC CONTRACT NO: 970008 (COACH)  
SEAT AND CARD TABLE INSTALLATION(1/2)  
115663  
DAEWOO HEAVY INDUSTRIES LTD.  
SEOUL KOREA

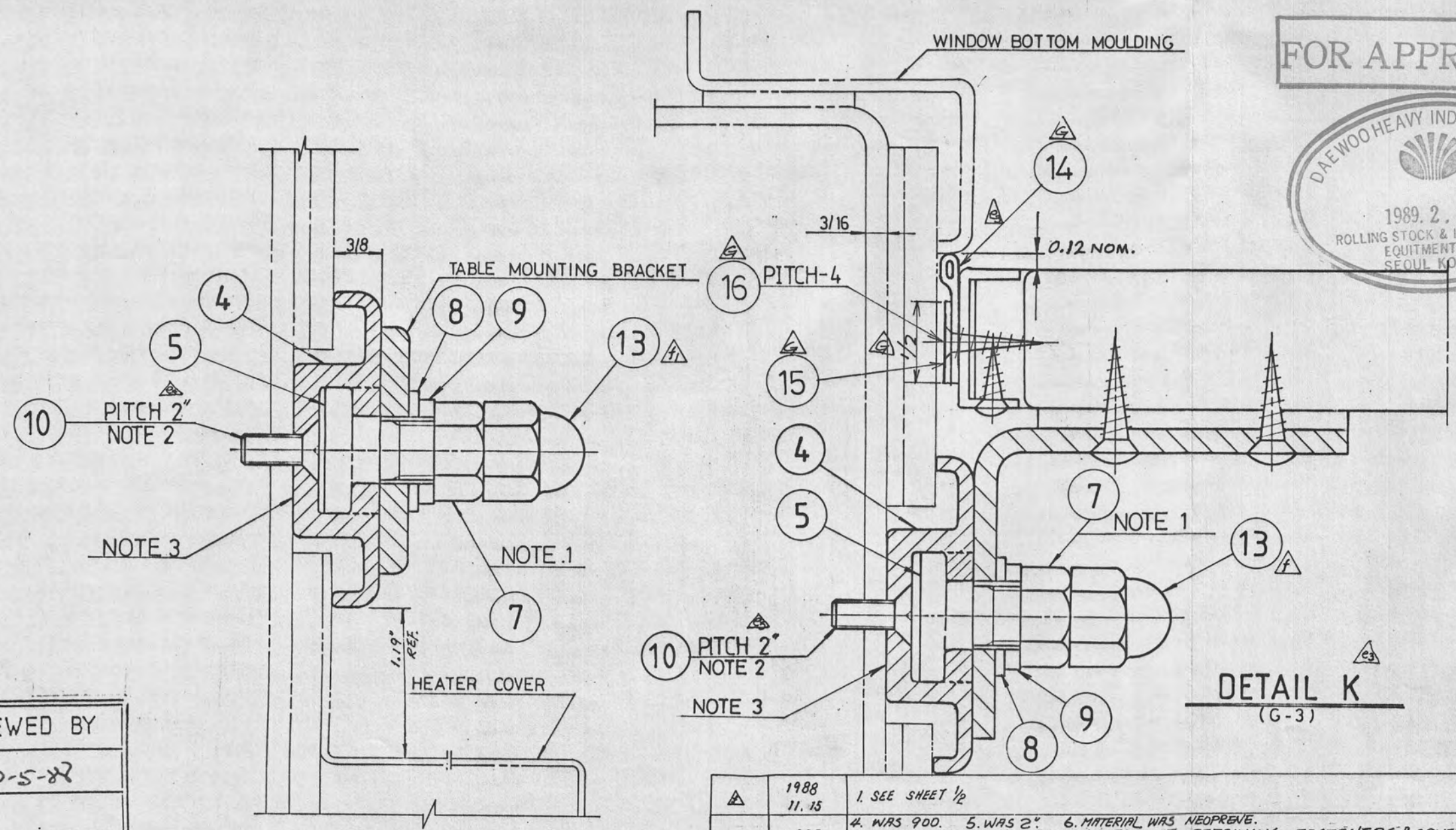


SYMBOL	DATE	REMARKS	DSG	CHK	CHK	APP
△	1989 2.2	SEE SHEET (1/2)				



- NOTE**
- TORQUE TO 620 Lb-in. (750kg-cm)
  - DRILL AND TAP 1/4-20 AT INSTALLATION.
  - COAT WITH ZINC CHROMATE PASTE
  - ITEM NO.12 TO BE CUT TO LENGTH AT INSTALLATION.
  - SHIMS FOR HEIGHT ADJUSTMENT AT INSTALLATION.
  - REFER TO DRG. NO. 216952 FOR AISLE LIGHT INSTALLATION.

**SECTION H-H**  
(1.2, SHEET 1/2)



REF NO	PARTS NO.	DESCRIPTION	MAT	Q'TY	W. T	REMARKS
16		FLAT CSK HEAD WOOD SCREW	S.S.	6		#6-18 x 3/4 L
15		RUBBER SUPPORT	TYPE 304 S.S.	2		+5/64 x 1/2 x 10 1/2 L
14		RUBBER	NEOPRENE	2		DRG. NO. 324343 COLOR: BLACK
13		HEX CAP NUT	ZINC PL. GRADE 5	12		1/2-13 UNC
12		COVER	PLASTIC	1 SET		DRG. NO. 322830
11		SPACER	S.S.	117		TAPERED TYPE
10		FLAT CSK HEAD MACHINE SCREW	S.S.	1350		1/4-20-5/8 LONG
9		SPRING WASHER	ZINC PL. GRADE 5	246		1/2
8		PLAIN WASHER	S.S.	246		1/2
7		HEX. NUT	ZINC PL. GRADE 5	246		1/2-13 UNC
6		SPECIAL BOLT	ASS'Y	117		DRG. NO. 322820-A
5		SPECIAL BOLT	ASS'Y	129		DRG. NO. 322820-B
4		TRACK (SIDE)	ALUM. 6063-T6	1 SET		DRG. NO. 322828
3		TRACK (FLOOR)	ALUM. 6063-T6	1 SET		DRG. NO. 322829
2		CARD TABLE	ASSY	2		DRG. NO. 115292
1		COACH SEAT ASSEMBLY	ASSY	39		DRG. NO. 115638

REF NO	PARTS NO.	DESCRIPTION	MAT	Q'TY	W. T	REMARKS
16		FLAT CSK HEAD WOOD SCREW	S.S.	6		#6-18 x 3/4 L
15		RUBBER SUPPORT	TYPE 304 S.S.	2		+5/64 x 1/2 x 10 1/2 L
14		RUBBER	NEOPRENE	2		DRG. NO. 324343 COLOR: BLACK
13		HEX CAP NUT	ZINC PL. GRADE 5	12		1/2-13 UNC
12		COVER	PLASTIC	1 SET		DRG. NO. 322830
11		SPACER	S.S.	117		TAPERED TYPE
10		FLAT CSK HEAD MACHINE SCREW	S.S.	1350		1/4-20-5/8 LONG
9		SPRING WASHER	ZINC PL. GRADE 5	246		1/2
8		PLAIN WASHER	S.S.	246		1/2
7		HEX. NUT	ZINC PL. GRADE 5	246		1/2-13 UNC
6		SPECIAL BOLT	ASS'Y	117		DRG. NO. 322820-A
5		SPECIAL BOLT	ASS'Y	129		DRG. NO. 322820-B
4		TRACK (SIDE)	ALUM. 6063-T6	1 SET		DRG. NO. 322828
3		TRACK (FLOOR)	ALUM. 6063-T6	1 SET		DRG. NO. 322829
2		CARD TABLE	ASSY	2		DRG. NO. 115292
1		COACH SEAT ASSEMBLY	ASSY	39		DRG. NO. 115638

REVIEWED BY  
  
 ENPROTECH CORP.

SYMBOL	DATE	REMARKS	DSG	CHK	APP
△	1988 11.15	1. SEE SHEET 1/2			
△	1988 10.4	4. WAS 900. 5. WAS 2". 6. MATERIAL WAS NEOPRENE. 3. CHANGED CONFIGURATION OF SEAT RETAINING FASTENERS & COVER	J.S. Lee	K.P. Lee	J.S. Lee
△	1988 7.26	1. ADDED NOTE 6 2. MODIFIED WINDOW MOULDING CONFORMATION. 1) MODIFIED THE SHAPE OF SIDE TRACK. 2) 900 WAS 800. 3) CHANGED THE JOINTING METHOD OF CARD TABLE.	J.S. Lee	K.P. Lee	J.S. Lee
△	1988 4.19	REDESIGNED	J.S. Lee	K.P. Lee	J.S. Lee