



**ALASKA RAILROAD CORPORATION**  
327 W. Ship Creek Ave.  
Anchorage, AK 99501.

**October 6, 2016**

**Addendum 1**

ITB # 16-25-205011

ARRC 2016 Vehicle Purchase

Addendum number 1 is issued for questions and clarifications to the Specifications.

**The Closing Date for this has changed. This ITB will close as follows:  
Bids will be received until October 27, 2016 @ 3:00 PM local Alaska time.**

---

**Please see the attached pages for all questions and answers.**

Please acknowledge receipt of this and all addendums in your firm's **Supply Bid Form (Form 395-013)**.  
All other terms and conditions remain unchanged.  
If there are any questions regarding this addendum please let me know.

Thank you,

***Greg C Goemer***

Sr. Contract Administrator  
Alaska Railroad Corporation

1. Does ARRC want grab handles, wigwam lights, and grip strut running boards, or OEM running boards?
  - a. **Yes on grab handles**
  - b. **Yes on wigwam lights pertaining to the following trucks 1423, 1427, 1434, 1435, & 1436. Remaining trucks to follow SOP on lighting.**
  - c. **Yes on grip strut running boards as a requirement. Running board can be OEM or aftermarket as long as they are a grip strut running board of some sort to prevent slipping for safety compliance.**
2. 13,000 GVW truck needs to be a dully to meet requirements
  - a. **No, super single tires meet 13,000 GVWR standards. See attached Track Inspector Truck drawing.**
3. Vehicle # 1434 - Should 1434 be a 350 or 450
  - a. **1 ½ Ton**
  - b. **Converter location – inside the box top shelf either side near front or rear of box. Anywhere else converter gets wet or beat up by parts, tools, etc. Up high and protected on either end will work.**
4. Vehicles # - 1420, 1421, 1444, 1445, 1446: 6.5' bed or 8' bed
  - a. **All units listed above to have 6.5" beds**
5. Clarify hirail gear 1500/2000 vs 1500 front & 1500 rear; all of the light duty hi-rail trucks: Harsco 1500/2000 hydraulic rail gear. While this is possible, confirm that this is the way ARRC wants to go rather than 1500/1500. This does away with the ability to do away with in-cab controls which are also required by most of these specs.
  - a. **1500/2000 was general spec indicating 1500 type rail gear for light/medium duty and 2000 type rail gear for medium/heavy duty trucks. Same type rail gear to be used in front and back of vehicle.**
6. Provide clarification on light bar / mini
  - a. **Unit 1430 is the avalanche truck, light bar amber and white. LED Code 3 shield light bar is an example from Alaska Safety anything equivalent will work.**
7. Vehicle # 1439: delete "skid plate package" from spec, add driving lights to be bumper mounted, LED wired on a switch to high beams
  - a. **Omit skid plate package**
  - b. **See SOP on lighting, reflectorization, and attachments**
8. Verify ARRC wants to state "backup lights on a separate switch"
  - a. **Yes, back up lights to be on separate switch – See SOP on lighting, reflectorization, and attachments**
9. Vehicle # 1428: work lights on a separate switch mounted on a headboard
  - a. **Work lights to be mounted on Headache rack – See SOP on lighting, reflectorization, and attachments**
10. Seat Covers; provide spec. brand & or equal
  - a. **Tiger Tough Group – 1-888-700-SEWN (7396) – [www.tigertoughgroup.com](http://www.tigertoughgroup.com)**

11. Vehicles # 1439-1441: clarify “ Require full size spare tire & wheel”, check on mirror spec 102” wide “extended side mirrors” may be only available on small trucks
  - a. **Provide mounted spare tire for front and mounted spare tire for rear (drive axle)**
  - b. **Standard 102” will be acceptable.**
12. Check SOP for updates to the hood rack.
  - a. **See attached SOP on lighting, reflectorization, and attachments**
13. Vehicles # 1439 - 1441: Air bags not offered from class VI trucks, also auto start not offered (1439-1441). Would ARRC like to have an auto shutdown installed on the engine in place of the auto start?
  - a. **Omit air bags on following trucks 1439, 1440, 1441**
  - b. **Auto start is offered and required**
  - c. **Idle shut down feature if offered will be programmed prior to delivery per HE Shop specifications. Specifications will be provided upon award.**
14. Verify if ARRC wants to list 5lb for the standard for all fire extinguishers
  - a. **5 lbs. fire extinguisher required**
15. Vehicle # 1439: Chassis, clarify springs & air suspension, clarify single PTO with a tandem pump, or a single PTO with a divert valve, or two PTOs.
  - a. **Heavy duty front spring suspension package**
  - b. **Rear air suspension with dump valve**
  - c. **Single PTO with dual pumps to run gandy/compressor and crane/hyrail gear is acceptable. PSI must have required pressure to run each piece of equipment sufficiently.**
16. Vehicle # 1441: Clarify exhaust preference, horizontal or vertical
  - a. **Passenger side vertical exhaust is required**
17. Vehicles # 1439 - 1441: Warranty for larger trucks, clarify 2 year unlimited or? Define “powertrain; bassline warranty or do we want transmission.
  - a. **Minimum:**
    - i. **1 year/unlimited basic bumper to bumper**
    - ii. **2 years/200,000 miles Engine**
    - iii. **3 years/unlimited Transmission (Powertrain)**
    - iv. **3 years/unlimited drive axles**
18. Vehicles # 1440-1441: add mud flaps to be located behind front tire & rear most tandem wheel, define powertrain warranty, under exterior change to read “full size spare tire and wheel, clarify driving lights wanted; LED or other.
  - a. **Mud flaps behind front tire / Mud flaps in front and behind rear tires**
  - b. **Powertrain = transmission**
  - c. **Mounted spare tire for front and mounted spare tire for rear (drive axle)**
  - d. **See SOP on lighting, reflectorization, and attachments**
19. Vehicle # 1422: clarify hirail spare not required if not a hirail truck.
  - a. **Mounted spare tire required for type of vehicle being bid**

20. Small Trucks; add rhino liner or equal, auto start
  - a. **Truck bed to be lined with rhino liner or equivalent.**
  - b. **Auto start required, Factory auto start preferred, if not available after marked will be acceptable**
  
21. Do we have a min spec for capacity on the utility rack?
  - a. **1,000 lbs. minimum – See SOP on lighting, reflectorization, and attachments**
22. Vehicle # 1430: code 3 light bar what colors do we want; amber & white?
  - a. **Amber and white – see SOP on lighting, reflectorization, and attachments**
23. Vehicles # 1440-1441: Auto start vs engine auto stop shutdown, no air bags offered , remove 4x4 & replace with double lockers on real axle, 345 HP will be acceptable
  - a. **Auto start is offered and required**
  - b. **Idle shut down feature if offered will be prograded prior to delivery per HE Shop specifications. Specifications will be provided upon award.**
  - c. **Omit air bags on following trucks 1439, 1440, 1441**
  - d. **Omit 4x4 replace with double lockers on rear axle**
  - e. **345 HP is acceptable**
24. Vehicle # 1440: Remove tank color “white”, & verify we want construction of stainless steel
  - a. **Omit color white**
  - b. **Tank shell, ends, and baffles are to be constructed of 7 gauge AISI 316 stainless steel**
25. Vehicle # 1434: 9’ Omaha Service body “or Equal”, will side racks work in place of roof rack?  
Clarify H.D. bumper spec.
  - a. **Omaha service body or equivalent**
  - b. **Replace roof rack for side racks for vehicle 1434**
  - c. **See attached picture of HD bumper**



26. Vehicle # 1434: clarify mounting of invertor
  - a. **Converter location – inside the box top shelf either side near front or rear of box. Anywhere else converter gets wet or beat up by parts, tools, etc. Up high and protected on either end will work.**

27. Vehicle # 1431: change to MR75 robo lube, provide picture for pro tex lube applicator arms, need height on bottle compartments, tool box top mounted-provide picture
- a. **Spec should be 10R75 Robolube**
  - b. **See attached picture for pro tex lube applicator arms**
  - c. **Bottle compartment to be 36" wide and 48" tall**
  - d. **See attached picture for tool box top/holder mount**
28. Vehicle # 1441: "flat top rail or "dirt shedding top rail"?
- a. **Dirt shedding top rail**
29. Vehicles # 1428-1430: can the bulkhead be tapered?
- a. **Tapered bulkhead is required see attached SOP on lighting, reflectorization and attachment picture**
30. Vehicles # 1438-1439: are there pictures available of these units
- a. **1438 example**



- b. **1439 example**



31. Vehicle # 1437: fuel filter should read "fuel filler"
- a. **Fuel filler - see picture 1438 example above**
32. Back up Cameras, do we want them on all the time or just when in reverse, (factory standard)
- a. **Factory standard backup cameras**
33. Heavy duty floor mats mfg. required & or equal
- a. **Goodyear or any equivalent Manufacture Heavy duty floor matt .**

34. Vehicles # 1422 -1424: Verify that the utility boxes are to run the length of the truck bed & not stacked; For the “(2) Utility boxes 96”W x 16”T x 13”D, side by side passenger side,” how are these to be mounted? One on each side of the pickup bed or two shorter boxes mounted end to end? Also, I’m only finding an 87-1/8”W box at this point, is that acceptable?

a. **1422 & 1424 side by side utility box mounted example for 8’ truck bed**



**1432 & 1433 side utility box mounted example for 6.5’ truck bed**

b. **87-1/8” wide is acceptable**

35. Vehicles # 1444-1446: come up with a topper spec to address height & any options we may want on them.

a. **Vehicles 1444-1446 example of type topper required or equivalent w/hood rack**



36. Vehicle # 1441: needs a light clarification

a. **See attached SOP on lighting, reflectorization, and attachments**

37. Harsco rail gear will not fit on a F350 Dual Wheel Chassis. (The Axle width is too narrow for hirail.) Some options might be to go to a F450 or a single rear wheel 350 or Super singles?

a. **Single rear wheel with super single tires will replace dual wheels**

38. Vehicles # 1422, 1424: For the “(2) Utility boxes 96”W x 16”T x 13”D, side by side passenger side,” how are these to be mounted? One on each side of the pickup bed or two shorter boxes mounted end to end? Also, I’m only finding an 87-1/8”W box at this point, is that acceptable?

- a. **1422 & 1424 side by side utility box mounted example**



- b. **87-1/8” wide is acceptable**

39. Vehicles # 1437-1438: Spec calls for a 2,000lb utility crane. Is a Stellar EC-2000 an acceptable option?

- a. **Yes – Stellar EC-2000 is acceptable**

40. Vehicle # 1439: Does this truck require a rail rack?

- a. **No rail rack required**

41. Vehicle # 1439: The spec says “Hood Rack (see SOP)”, what is this referring to?

- a. **See provided SOP on lighting, reflectorization, and attachments**

42. Vehicle # 1439: The spec also calls for a reversing transmission, which may not be possible on an 84” CA truck due to space constraints. Have you had this done in the past?

- a. **Omit 12 mph minimum in reverse and replace with 15 mph minimum in reverse**
- b. **Yes, requirement is for the unit to perform a minimum 15 mph in reverse without complications. Depending on the transmission gear ratio some transmissions will perform the task with no issues, others require a second reversing transmission installed.**

43. Vehicles # 1444-1446: Spec calls for a topper and a roof rack. Is the roof rack on the topper or on the cab of the chassis?

- a. **Vehicles 1444-1446 Exact example of type topper needed or equivalent w/hood rack**



44. Vehicle # 1440: Do you want an engine brake on this truck?  
 a. **Engine brake is required**
45. Vehicles # 1440 & 1441: Work lights: you have listed a Golight and 2 adjustable hood mounted lights. Is this a duplicate or do you want both?  
 a. **See below example of light placement**



46. Vehicle # 1441: Do you want just an exhaust brake or do you want an engine brake?  
 a. **Engine Brake require**
47. Vehicle # 1441: Vibrator mount: do you want jus the vibrator mount or do you want the vibrator mounted?  
 a. **Vibrator mounted for dump body clean out**
48. Vehicle # 1441: Contoured corner posts: please clarify as to what you are referring to  
 a. **Dump body corners to be rounded verses straight edge 90 degree meeting point. Bull noise verse corner edge lack of better terms. Before question is asked either design is acceptable. Rounded is preferred.**
49. Vehicle # 1441: Dump bed color – What color do you want the dump to be?  
 a. **Black**
50. Vehicle # 1441: Sander: where do you want the hydraulic connection on the truck to be for the connection to the sander?  
 a. **Middle rear of truck. Diverter valve on dump truck required to change from dump box and sander unit**
51. Vehicles # 1437 & 1438: 12V power with wired remote and quick connect plug in, is referring to the controls for the crane right?  
 a. **Yes**
52. Vehicles 1428-1430, & 1435-1438 designate 56" CA. Will a 60" CA be acceptable?  
**Yes 60" CA is acceptable.**
53. On the dump body is the front axle a drive axle, what CT do you want for the truck or length for the dump body.  
 a. **No, rear axle is the drive axle**  
 b. **Straight side, dual channel, with shedding rail top**  
 c. **17 foot dump length**



54. Vehicles # 1437 & 1438: Customer rear pumper what is the measurement for the required height from the ground?

- a. **Minimum 12" from ground level – see attached Section truck example**



55. Vehicle # 1434: two easy lift ladder systems each side, can those be side mounted?

- a. **Yes - placement requirements - see attached picture**



56. Vehicle # 1433: There appears to be two trucks numbered 1433, are there two new trucks or one replacing two trucks?

- a. **There are two trucks that with identical specifications – vehicle 1432 replacing vehicle 1221 & vehicle 1433 replacing vehicle 1222.**

57. Vehicle # 1431: Master lock system with top mounted individual boxes will not work, can something else be complied to act as a master locking system?

- a. **All compartment boxes to be keyed the same.**

58. Vehicle # 1431: Can you provide an example of the dual track jack holder below the deck behind the cab drivers side?

- a. **See attached Track Inspector truck configuration and diagrams**

59. Vehicle # 1420:

- a. **Omit headache rack**
- b. **Omit work lights, strobe light, Golight, backup lights**
- c. **Add internal police light bar SoundOFF EPL8000 example colors Red & Blue**
- d. **Add rear police predator deck light bar example color red and blue**

Clarification, the full size Ford SUV (Excursion) no longer have a V-8, they come with the Eco boost V-6.

## **Standard Operation Procedures New Vehicle Lighting, Reflectorization, and Attachments Effective July 1, 2016**

### Reflectorization Standard:

A 2" White and Red Conspicuity Reflective Marking will be placed on the rear of all vehicles and will cover at a minimum 75% of the width of the rear end of each vehicle.

A 2" White Conspicuity Reflective Marking will be placed, at a minimum, covering at least 75% of the width of the front area of all vehicles.

A 2" x 12 ½" White and Red Conspicuity Reflective Marking will be placed above the center of each of the four wheel wells.

A 2" x 11" Red Conspicuity Reflective Marking will be placed at the top of the driver and passenger doors.

### **Light Standards:**

#### Strobe Light

Strobe lights are required on all hyrail vehicles, tractors and snow plows. The strobe light standard is 3-3/4" amber LED strobe light beacon with 5 LEDs and must have 360 degree viewing. If there is an obstruction to 360 degree viewing a second strobe light will be installed on the vehicle. Avalanche Zone vehicles & police vehicles may have an installed bar light equivalent to Alaska Safety code 3 light bar - colors amber and white combination.

#### Driving Lights and Hyrail Back Up Lights

Driving lights will be attached to the front grill or bumper if no room to install within grill. Front driving lights are to be wired with vehicle high beam controls and will be in a 4 inch LED light minimum 3,000 lumens. The same light will be installed on a separate switch for back up lights on hyrails. Back up lights will be mounted on rear bumper.

#### Work Lights

Work lights will be attached on each side of headache rack, or ladder rack (rear attachment), or hood rack (rear attachment) unless indicated otherwise (ex. Boom trucks, tractors, and service body trucks usually mounted at rear of service body) on a separate switch. Work lights to be a minimum 4 inch LED Flood lights.

### Spot Lights

Required spot lights will be a Go Light, Stryker LED model 30004, white. Spot lights will be mounted on headache rack driver's side, when one is not present, hood of the vehicle on driver side.

### **Attachments Standards - Headache rack, ladder rack, and hood rack**

Headache rack heavy duty design



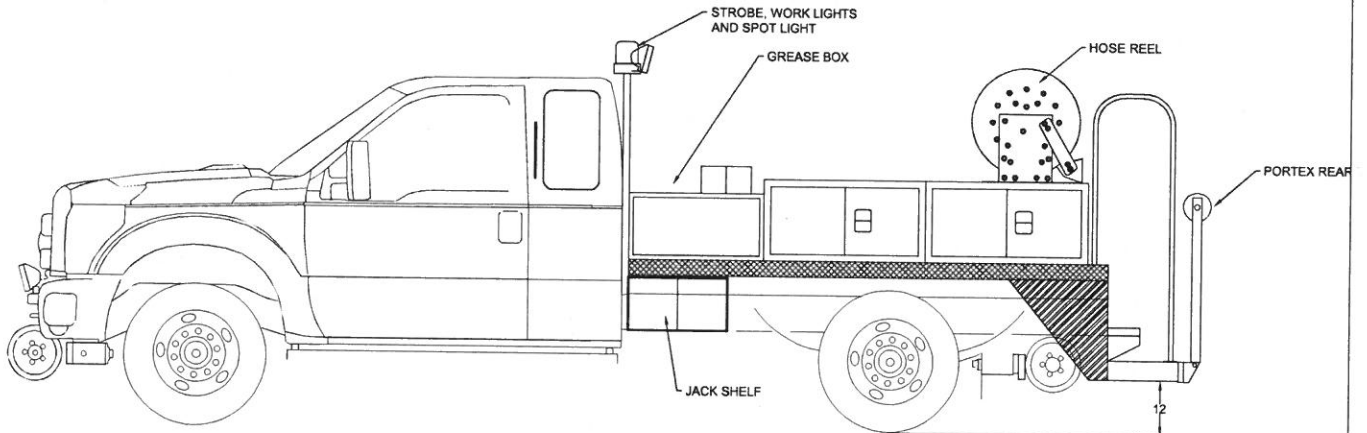
Truck bed ladder rack – 1,000 lbs. minimum weight capacity required



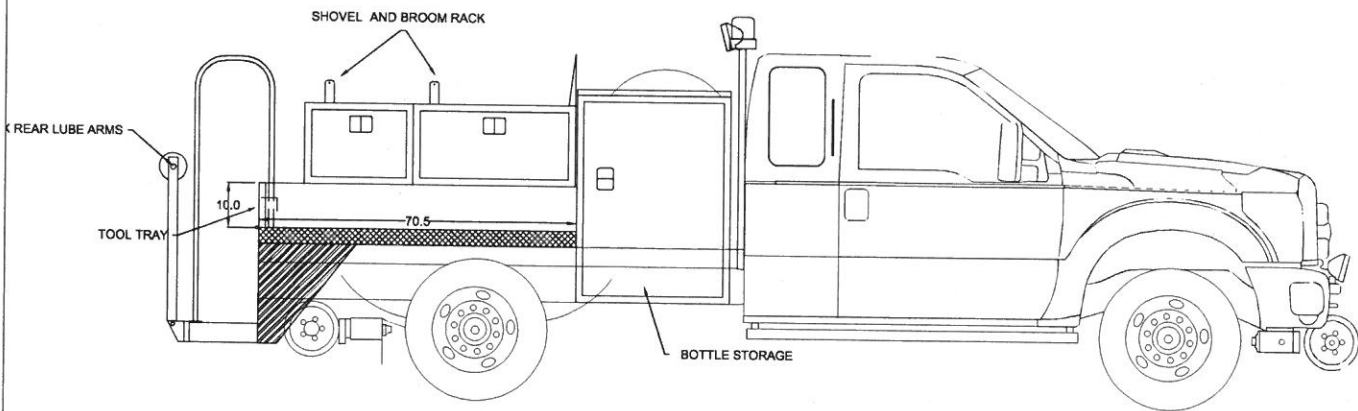
Truck topper hood rack



# V# 1431, TRACK INSPECTOR TRUCK



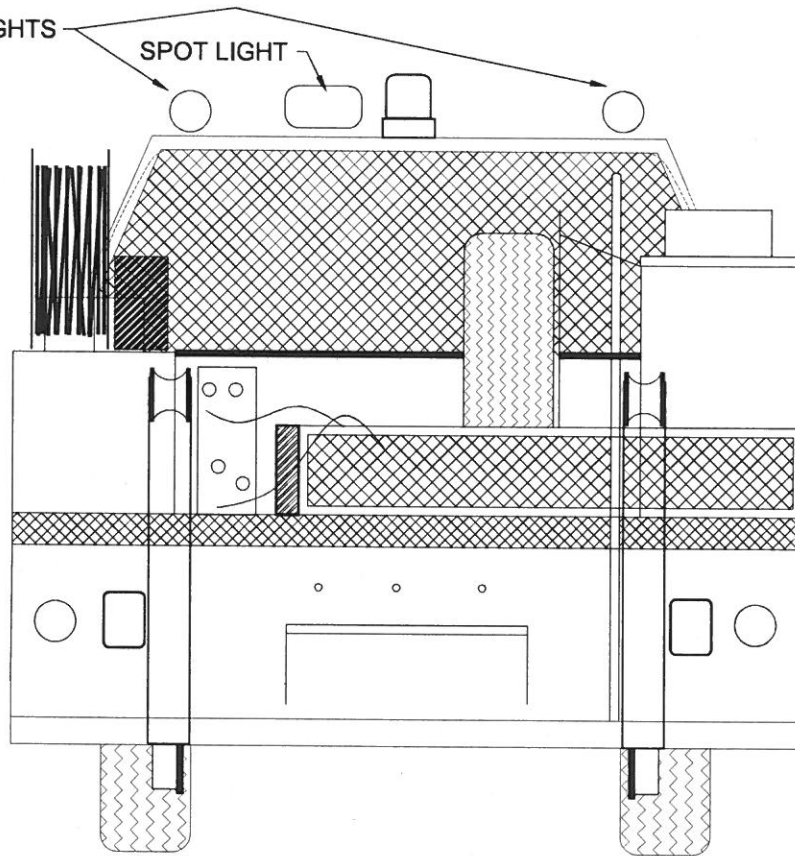
INSPECTOR TRUCK  
SCALE =  $\frac{3}{8}$ " = 1'



INSPECTOR TRUCK  
SCALE =  $\frac{3}{8}$ " = 1'

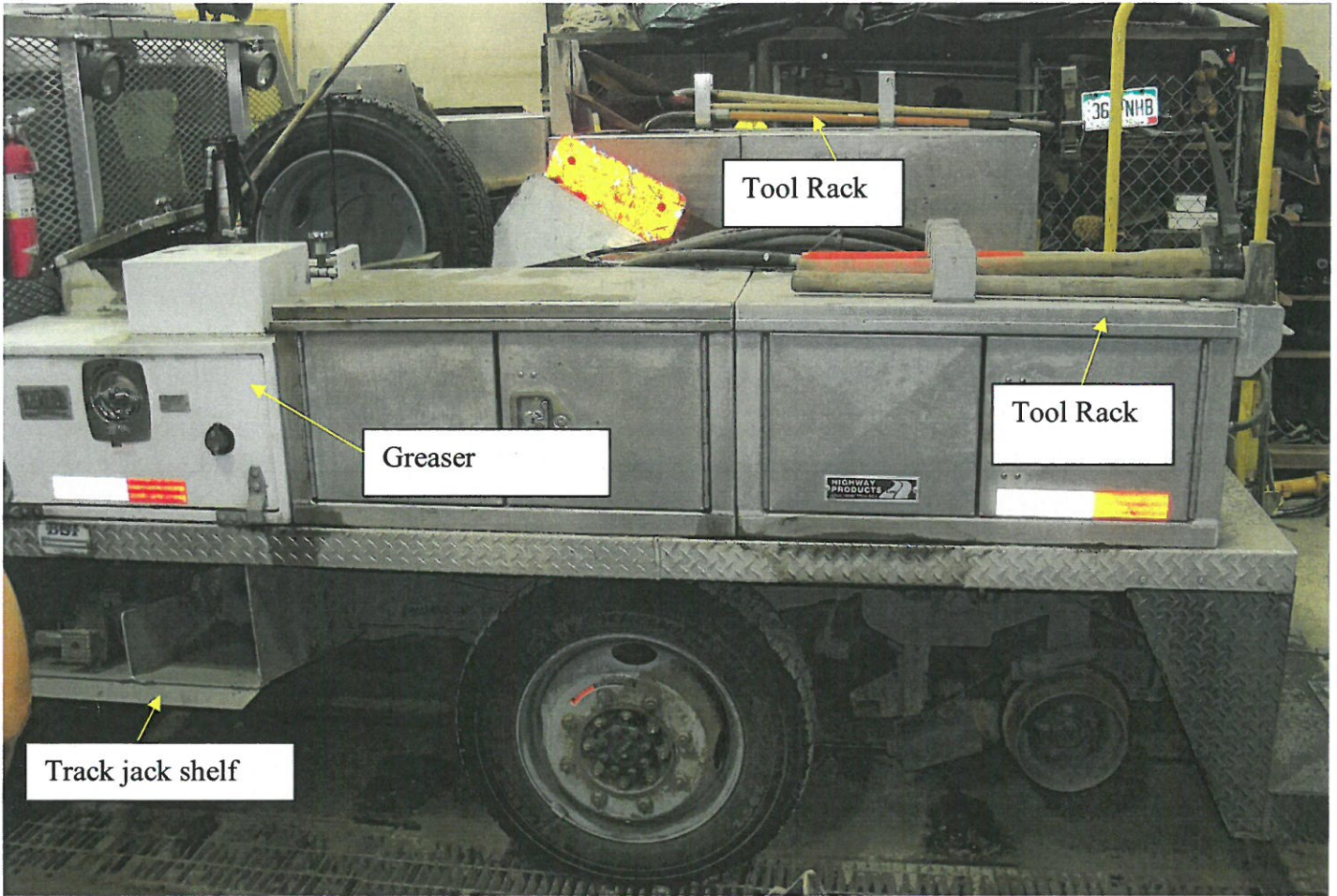
WORK LIGHTS

SPOT LIGHT



INSPECTOR TRUCK

SCALE =  $\frac{3}{4}$ " = 1'



Tool Rack

Greaser

Tool Rack

Track jack shelf





Bottle  
Compartment

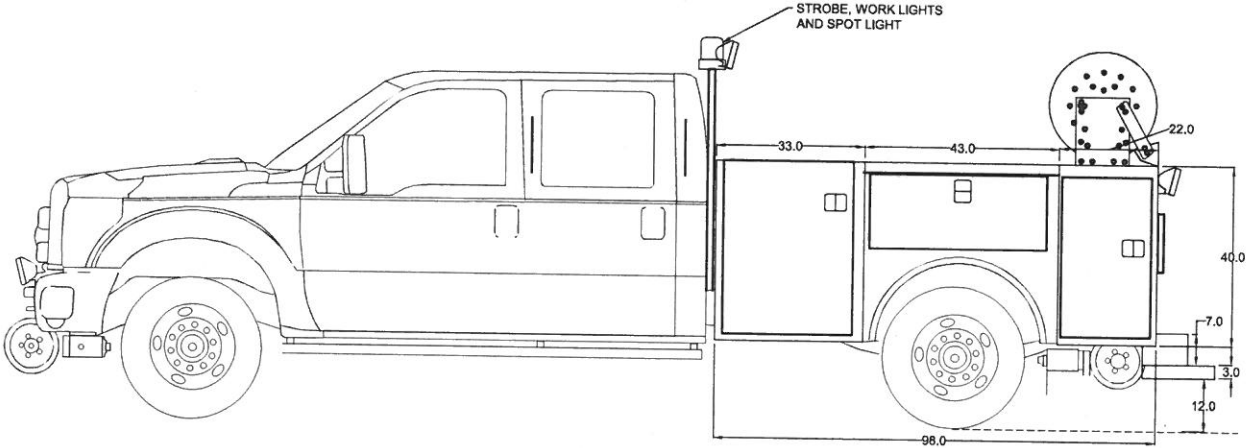
Long Tool  
Rack



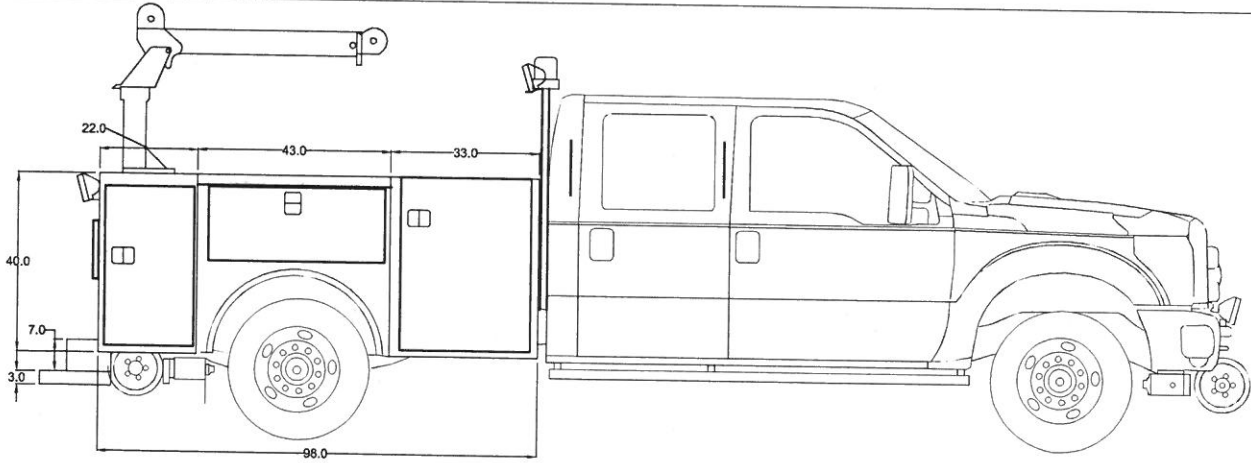
End



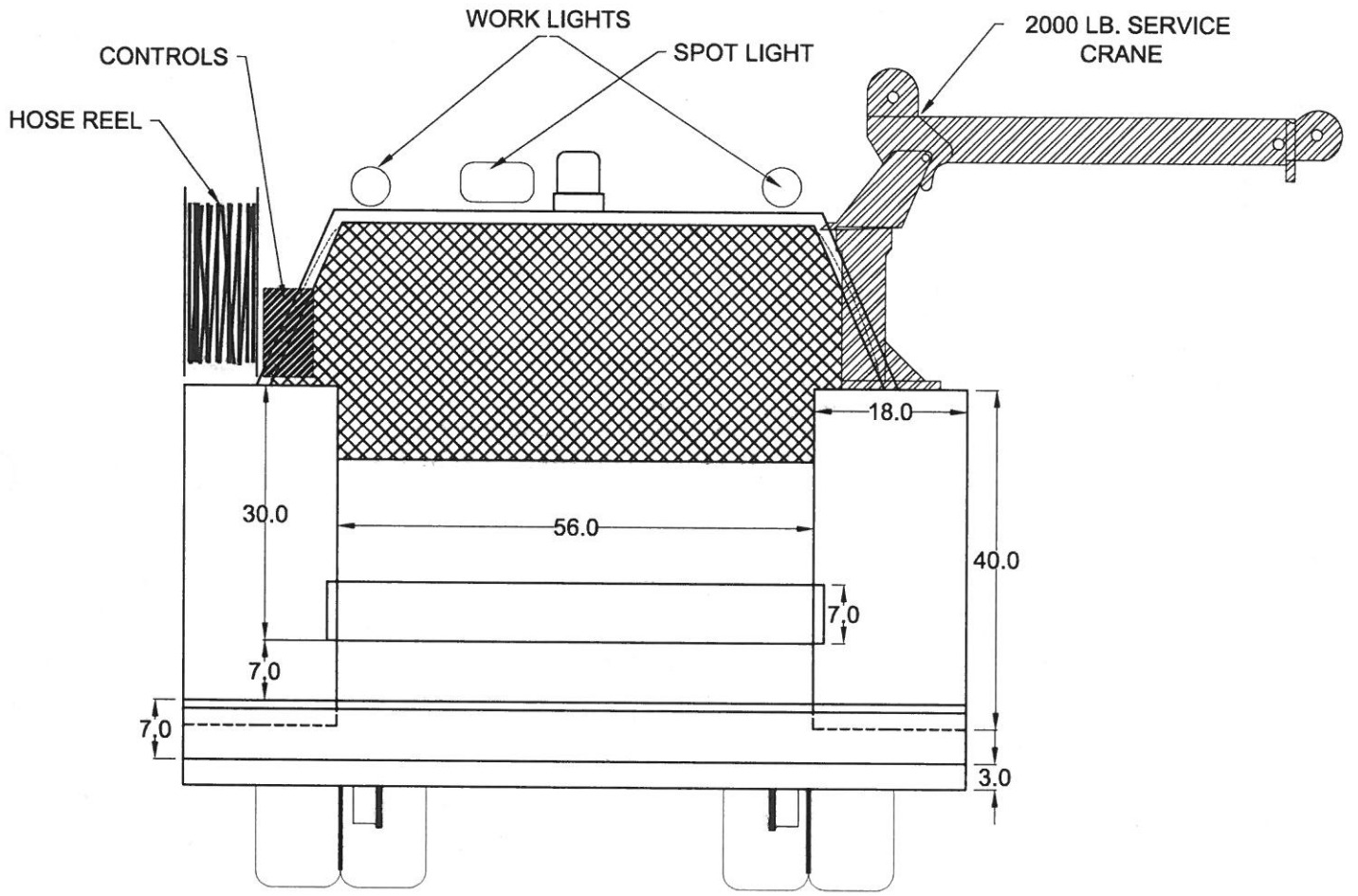
V# 1438 SECTION TRUCK



SCALE = 3/8" = 1'



SCALE = 3/8" = 1'



SCALE = 3/4" = 1'



LIFTMOORE

1083

DEF ONLY

DEF ONLY

35